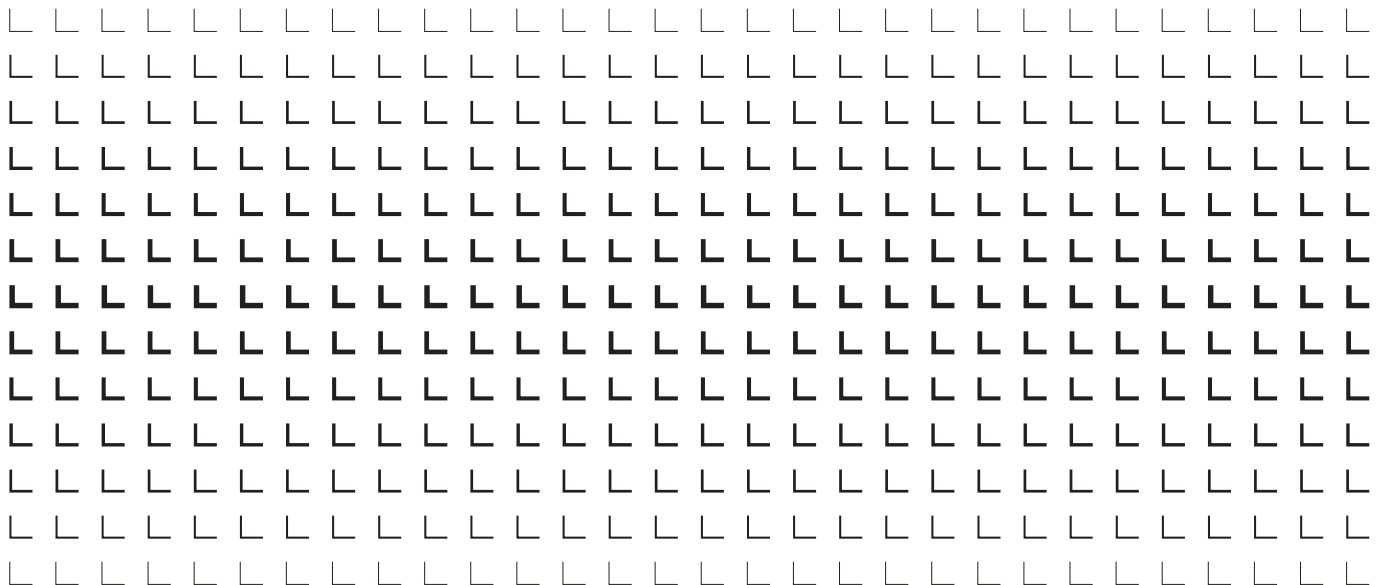

Product programme

LIEBHERR

The Group



Product programme of the Liebherr Group

Earthmoving

- 6 Hydraulic excavators
- 8 Articulated dump trucks
- 10 Wheel loaders
- 12 Crawler dozers, crawler loaders and pipelayers
- 14 Telescopic handlers

Material handling

- 16 Material handling machines

Deep foundation

- 18 Piling and drilling rigs
- 20 Duty cycle crawler cranes

Mining

- 22 Mining machines and technology

Mobile and crawler cranes

- 24 Mobile cranes
- 26 Crawler cranes

Tower cranes

- 28 Mobile construction cranes
- 30 Tower cranes

Concrete technology

- 32 Truck mixers and mixing plants
- 34 Concrete pumps

Maritime cranes

- 36 Port equipment
- 38 Ship, floating and offshore cranes

Aerospace and transportation systems

- 40 Aerospace
- 42 Transportation systems

Gear technology and automation systems

- 44 Gear cutting machines, gear cutting tools and measuring technology
- 46 Automation systems

Refrigerators and freezers

- 48 Domestic appliances – Household
- 50 Domestic appliances – Commercial

Components

- 52 Combustion engines and injection systems
- 54 Hydraulic and mechanical drive technology
- 56 Electric drive technology and electronics

Hotels

- 58 Hotels of the Liebherr Group

Liebherr Group

- 60 Product segments of the Liebherr Group
- 62 Overview of the sites
- 64 Overview of the companies

Short profile

The Liebherr Group

Founded in 1949 by Hans Liebherr, today, the Liebherr Group includes over 150 companies on all continents and employs over 50,000 people.

The Liebherr Group is a family-run technology company with a highly diversified product programme. Not only is the company one of the largest manufacturers of construction equipment in the world; it also provides high-quality and user-oriented products and services in a wide range of areas. The holding company of the Liebherr Group is Liebherr-International AG, whose registered office is in Bulle, Switzerland. All of its shareholders are members of the Liebherr family. For the company, long-term success, sustainable development, stability and reliability are what count.

Liebherr is a pioneer. It is with this pioneering spirit that the company makes a decisive contribution to the history of technology in many industries and already dedicates itself today to challenges that customers will face tomorrow. The Liebherr Group develops and manufactures an enormous variety of fascinating products, which have made their mark on global markets on account of their high precision,

excellent implementation and longevity. The understanding of key technologies allows the company to also offer its customers customized solutions – the highest quality standards apply here and, at Liebherr, the focus is always on customer satisfaction.

To this day, employees around the world share the courage of the company's founder to tread previously unknown paths, and to achieve goals that at first seem unimaginable. They all share a passion for technology and exciting products, as well as a determination to provide excellent solutions for their customers and constantly redefine the limits of what is possible. Working together on these fascinating tasks creates a strong bond that Liebherr's employees can rely on – beyond national borders and continents.



Main locations of the Liebherr companies

More than

50,000

employees

> 40

production companies

> 150

companies

13

product segments



Find out more about
the Liebherr Group
in the annual report

Hydraulic excavators

Since the start of the 1950s, hydraulic excavators have been an important element of the Liebherr product programme. Today, the offer includes machines with operating weights between 10 tonnes and 100 tonnes, which are manufactured in Colmar in France and Kirchdorf (Iller) in Germany.

Efficient and modern

These high-performing, reliable crawler and wheeled excavators come in a size range to suit a whole host of applications. All machines set standards for efficiency and cost-effectiveness thanks to their modern technology. They impress with their high fuel efficiency, are environmentally-friendly, easy to service and operate, and are distinguished by their high availability and long service life.

With the Litronic equipment the hydraulic excavators from Liebherr have a useful combination of intelligent electronics and functional hydraulics. All important systems of the excavator are controlled, regulated, coordinated and monitored centrally.

Diverse application possibilities

Liebherr hydraulic excavators are used in civil engineering, road construction and tunnelling, in water management, in horticulture and landscaping, in demolition, as well as in the mining industry. Diverse equipment options offer customised solutions for special tasks.

The optimal tool for every application

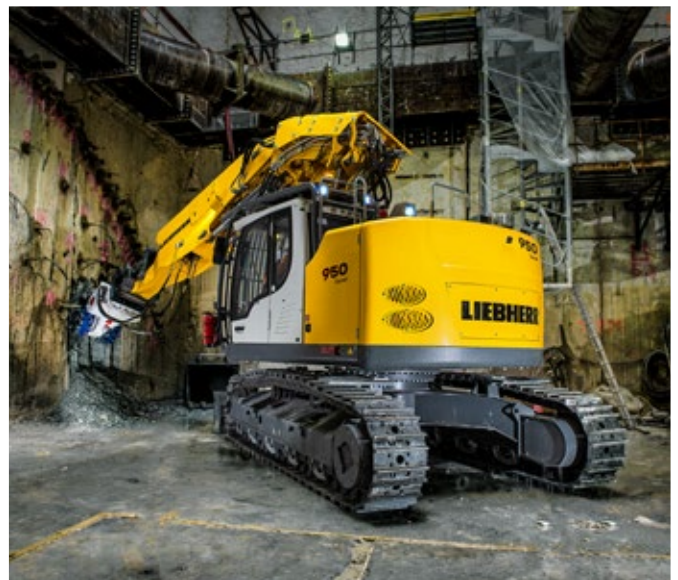
Liebherr develops and manufactures innovative tool attachments and quick coupler systems according to the highest quality standards. The product portfolio ranges from quick couplers and excavation tools, right through to pickers for diverse applications. Choosing the right tool attachment has a significant impact on the success of a project. This is why Liebherr has developed numerous tool attachments, whose shape, condition and technical equipment are specially customised for the respective application, and optimally configured for the respective machine size. Findings from the field and continuous development ensure that Liebherr tool attachments always correspond to the state of the art.



The A 922 Rail in operation for gravel works on a railway line in Frankfurt am Main (Germany)



The A 914 Compact Litronic at work on a road construction site in the Oberallgäu (Germany)



The R 950 Tunnel crawler excavator on the construction site of the Grand Paris Express (France)



The R 960 crawler excavator used for the demolition of a silo in Frévent (France)



The A 918 Litronic for earthmoving work in Regensburg (Germany)



The R 938 crawler excavator in use in a quarry in Metzeral (France)



The A 910 Compact Litronic and the A 913 Compact Litronic at work on a landscaping project near Munich (Germany)

Articulated dump trucks

Strong and robust – the TA 230 Litronic has been designed by Liebherr-Hydraulikbagger GmbH for tough off-road applications. With its perfectly harmonised components and sophisticated technology, the articulated dump truck can conquer any terrain.

Optimal machine concept

The TA 230 impresses with a clever machine concept, which was developed specially for demanding applications. Equipped with the best off-road driving characteristics and a generous dump body, it ensures maximum performance and productivity. A modern cab with extensive all-round glazing, as well as a short, sloped hood, enable an optimal view of the driving and working area of the machine at any time, as well as the area around the articulated joint. Modern assist systems also support the machine operator, thus increasing the safety and comfort during operation.

The articulated dump truck is primarily used for transporting excavated material as well as in the extraction industry. The machine is also perfect for special applications in industry as well as in tunnel construction.



The modern operator's cab of the TA 230 Litronic



The TA 230 Litronic deployed for transporting excavated material



Wheel loaders

Liebherr-Werk Bischofshofen GmbH in Austria develops, produces and sells wheel loaders from the Liebherr Group. The plant in the state of Salzburg has grown steadily over the decades thanks to sustainable innovations, creative solutions and high quality standards. With these strengths, and a well-balanced product portfolio, the company at Bischofshofen is on track for a successful future.

Comprehensive product range in four different wheel loader categories

The product range is continuously being expanded and includes numerous models in four different product groups: compact loaders, stereoloaders, medium and large wheel loaders, which impress with their innovative drive concepts. The modern design of the Liebherr wheel loader is user-friendly and easy to maintain down to the smallest detail.

Environmentally conscious and modern

The Liebherr wheel loaders make a reliable contribution to the economic success: at maximum handling capacity, the operating costs are reduced and, at the same time, the environment is protected thanks to the fuel-efficient drive concept.

The L 507 E is the first electric wheel loader in the Group. This battery-electric wheel loader creates no local emissions and is extremely quiet, yet still maintains its usual high working efficiency.

The L 546 for transporting tree trunks





The L 507 E battery-electric wheel loader has excellent performance capabilities.



The L 504 Compact in gardening and landscaping applications



The L 580 XPower® loading an articulated dump truck



The L 514 used for recycling



The L 526 in gravel application

Crawler dozers, crawler loaders and pipelayers

For over 40 years the crawler dozer and crawler loaders have been a fixed component of the Liebherr construction machinery programme. The concept of the hydrostatic travel drive was pursued from the outset. Some of the advantages of this technology include high efficiency, as well as comfortable and safe operation. The modern crawler dozers and crawler loaders are developed and produced by Liebherr-Werk Telfs GmbH in Austria.

Highest quality and efficiency in operation

With a Liebherr crawler dozer drivers always reach top performance – and also in changing weather conditions and with changing material qualities.

Whether for difficult thrust applications or precise levelling: the hydrostatic travel drive automatically delivers the optimal feed speed. Three levels of assistance systems guarantee maximum levelling quality and efficiency.

Liebherr Silent Design and the responsive touch interface offer a high degree of workstation comfort and individual adjustability.

Assistance systems increase productivity and safety

Liebherr pipelayers are used all over the world in extreme environmental conditions, and manoeuvre loads up to 100 tonnes. Hydrostatic drive, precise and powerful working hydraulics, as well as modern assistance functions, such as the fully integrated load moment limiter, guarantee maximum performance and safety on every pipeline construction site.

The new PR 736 G8.0 crawler dozer with Liebherr Operator Assistance Systems





The PR 766 G8 crawler dozer in quarry operations



The LR 626 G8.0 crawler loader in railing development



Indispensable assistant in the construction and maintenance of oil and gas pipelines

Telescopic handlers

With their outstanding lifting capacities and excellent manoeuvrability, the Liebherr telescopic handlers from the plant in Telfs in Austria are suitable both for demanding applications in construction, and for diverse industrial activities.

Power packs in every dimension

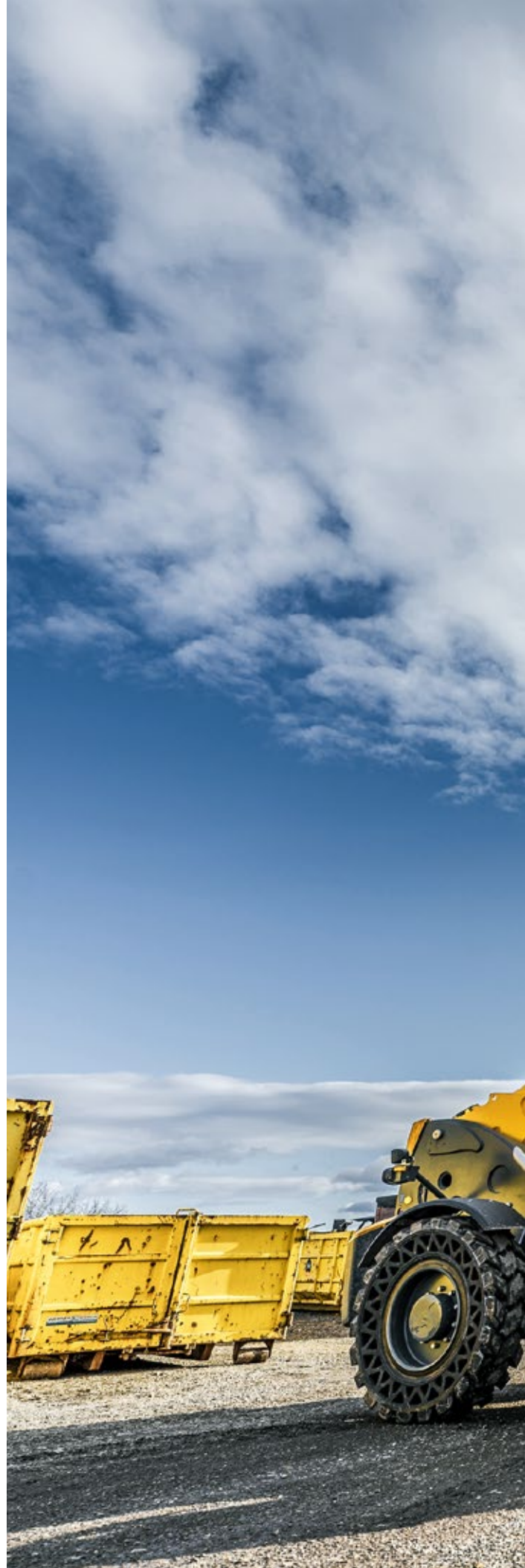
The tried-and-tested hydrostatic travel drive with stepless acceleration and the good manoeuvrability guarantee fast work processes, even when space is restricted. The universal and very robust construction machines are designed for optimal performance in diverse applications. High lift capacities (up to 6 tonnes) and lifting heights (up to 10 metres), intuitive operation, as well as high-performance components, enable drivers to complete the work quickly and safely.

Powerful and precise even in maximum load range

Robust and reliable: that is how the telescopic handlers from Liebherr are built. Sophisticated technology and high material and manufacturing quality guarantee a high level of availability. A high degree of utilisation and value preservation are guaranteed over the long term.



The T 38-7s telescopic handler at work at the sawmill



The T 60-9s telescopic handler as a universal aid on a construction site



Material handling machines

For over 60 years, Liebherr has been successfully designing and manufacturing machines for material handling in the plants of Liebherr-Hydraulikbagger GmbH in Kirchdorf (Iller) in Germany and Liebherr-France SAS in Colmar in France. With the various machine types in the new handler generation, Liebherr is offering efficient machines for handling large volumes for numerous applications such as scrap handling, timber handling and port handling, recycling and waste management.

Customised applications

To meet every intended purpose, Liebherr boasts a comprehensive portfolio of undercarriage variants, equipment combinations, attachments and quick couplers, as well as a wide selection of equipment options. Every machine can be individually configured depending on the deployment and requirements. The benefit for the customer is an efficient machine tailored to the respective application.

In-house production expertise

All key components such as diesel engines, electronic components, slew rings, slew drives and hydraulic cylinders, as well as all attachments, be it multi-tine grabs, clamshells, wood grabs or sorter grabs, are developed and manufactured by Liebherr.



The electric LH 26 M Industry Litronic used in recycling



The LH 60 M Timber Litronic used for timber handling



The LH 40 M Industry Litronic used in scrap handling

The LH 110 M High Rise Port Litronic used for port handling operations



Piling and drilling rigs

Liebherr-Werk Nenzing GmbH in Austria manufactures a wide range of deep foundation machines: in addition to the combined piling and drilling rigs, the comprehensive product programme also includes drilling rigs as well as piling rigs with fixed or swinging leader. A broadly diversified range of applications is covered with this variety.



High productivity in tough construction site applications

The robust design, the high stability, as well as the high pull and push forces, are typical of the Liebherr deep foundation machines. As a result, they impress under the most demanding operating and soil conditions with the ultimate in productivity and reliability. At the same time, the diverse machines are fuel-efficient and environmentally friendly, and can also be easily transported and quickly set up.

Full-service provider in the deep foundation industry

In the field of deep foundation work, Liebherr offers its customers not only numerous machines, but also a large number of services and digital solutions, which enhance efficiency on the construction site. These include technical consultation in the planning stage, application consulting on the construction site, recording, evaluation and transfer of machine data using LiDAT, exact positioning of the machines using LiPOS, as well as the documentation and analysis of the processes on the construction site via MyJobsite.

In addition to the deep foundation machines, duty cycle crawler cranes from the HS series are also manufactured in Nenzing. With various attachments, these are also used for deep foundation applications.

Kelly drilling with the piling and drilling rig LRB 355.1 in Manhattan, New York (USA)



The LRB 355 driving spun piles with the hydraulic hammer H 15-10 at Lake Zurich (Switzerland)



The LB 25 unplugged demonstrating its Kelly drilling capabilities in Zurich (Switzerland)



The LRB 23 vibrating in sheet piles in New York (USA)

Duty cycle crawler cranes

When the duty cycle crawler cranes were included in the product programme in 1979, Liebherr was the world's first manufacturer of hydraulically driven and electronically controlled duty cycle crawler cranes. Since then, the Liebherr duty cycle crawler cranes have been produced and sold by Liebherr-Werk Nenzing GmbH in Austria with great success. The proven universal machines are distinguished by their flexibility, efficiency and excellent cost effectiveness.

Diversity in all areas

These universal machines can also be used in deep foundation and material handling, in gravel extraction, demolition or recycling. The product types include machines of all performance categories from 40 tonnes to 300 tonnes – it also includes the world's largest duty cycle crawler crane, the HS 8300, which is also equipped with a hybrid drive.

Liebherr duty cycle crawler cranes impress with their robust steel construction and their high-performance and innovative drive technology. As a result, they work very reliably, even in demanding applications. Moreover, the customer benefits from optimised performance and enhanced safety, simple and fast transportation and quick set-up on site.

A number of assistance systems ensure safer and simpler application: one example is the innovative Ground Pressure Indication. It calculates the current ground pressure of the machine in real time and compares it with the specified safety limits of the relevant position. The ground pressure is displayed in the operator's cab, so that it is always clear whether the machine is situated in, or is approaching, a critical area. This means that dangerous work steps can be avoided or adapted in good time.

In addition to the duty cycle crawler cranes, special carrier machines for slurry wall construction are also available. Their compact size makes them suitable for work in confined spaces, and in the unplugged version, they are particularly well suited for urban or noise-sensitive construction sites.



HS 8130 with slurry wall cutter operating in London (UK)



The LBX 600 carrier machine for slurry wall construction in action on a construction site in Forlì (Italy)

The HS 8100.1 E with electric drive
dredging in Le Havre (France)



Mining machines and technology

Since Liebherr's move into the mining industry, its products have set standards in open-pit mining operations around the world. Thanks to advanced technologies, reliable components, and comprehensive on-site customer service, Liebherr's mining trucks, excavators, and dozers ensure the highest levels of time- and cost-efficiency – even under the toughest of conditions. Liebherr is continuously developing its innovative capacity and, along with a dedicated focus on quality, the company ensures maximum customer value in all product areas.

Mining equipment

Liebherr's mining machines come with 50 years' experience in design, manufacturing, and support. The portfolio includes mining trucks designed to handle payloads of up to 375 t / 413 tons, eight different excavator models with operating weights of 100–800 t / 110–880 tons with bucket capacities of up to 47.5 m³ / 62.1 yd³, and hydrostatic dozers of 50–70 t / 55–77 tons. Liebherr's mining trucks and excavators are perfectly harmonised with each other and are suitable for the demands of mining environments across the globe. Customers can expect a high level of performance from these machines at the lowest cost per tonne.

Reducing emissions has always been a main focus of Liebherr. The mining product segment achieved the first target of its Zero Emission Mining Program in 2022. Namely, to offer low-carbon solutions for its complete digging and hauling range. The technologies, including the haul truck Trolley Assist System and electric excavator range, consistently achieve proven results in the field to lower carbon emissions. Liebherr is committed to the future and strives to offer completely fossil-fuel-free mining equipment for hauling, digging, and dozing by 2030.

IoMine: Liebherr's mining technology portfolio

Liebherr's recently expanded technology portfolio, IoMine, features cutting-edge technology designed to optimise all aspects of day-to-day mining operations. It is intended to support the growing number of customers moving towards an integrated operations approach to mining. The products within IoMine are split into three distinct product families, each dedicated to a specific aspect of mining operations: Operate, Automate and Maintain.

Our mission. Your success.

Liebherr works hard to maintain a robust and collaborative partnership with every customer: from first contact and customised machines, through to ongoing customer support that includes training, new parts, parts remanufacturing, and on-site service. Highly qualified Liebherr service personnel ensure correct preventative and scheduled maintenance of customers' machines as well as prompt emergency service through the entire lifecycle of the equipment in order to guarantee optimal equipment uptime.



Liebherr's 70 t class dozer, the PR 776, offers best-in-class efficiency for customers.



IoMine features cutting-edge technology designed to optimise all aspects of day-to-day mining operations.



Liebherr's autonomous haulage solution will include fleet management and machine guidance systems.



The R 9300 G8 is the newest mining excavator in the portfolio.



The R 9400 E electric excavator operating in a mine in Australia

Mobile cranes

Every second all-terrain crane supplied worldwide originates from the modern crane production plant of Liebherr-Werk Ehingen GmbH in Germany. Research and development, production, as well as global sales and service, are combined at the site. The global market leader therefore has comprehensive expert knowledge on the entire life cycle of a mobile crane.

All-terrain cranes that set new standards

Liebherr offers the right crane for every lifting task and customer requirement. The extensive portfolio of sophisticated crane concepts ranges from the small two-axle model to the heavy-duty crane with nine axles and a load capacity of 1,200 tonnes. The mobile cranes from Liebherr stand out thanks to their dependable operation, their durability and their innovative technologies. Our employees are committed to making continual advances, whether in terms of performance or versatility, efficiency or sustainable solutions.

Reliable service from the manufacturer

Liebherr mobile cranes are used worldwide. Through direct sales and a tightly knit global service network operating more than 80 dedicated sites, Liebherr can provide customers across 35 countries with the best possible support. Liebherr is also the world's largest dealer of used cranes. Digital solutions provide effective support and deliver help even faster.



The LTM 1750-9.1 – featuring Y guying, telescopic boom extension and luffing lattice jib – installs a wind turbine in Norway.



Assembling precast concrete parts in an expansive olive tree plantation – the groundbreaking LICCON3 crane control enters series production with the LTM 1110-5.2.



Compact cranes from Liebherr are distinguished by their small size. The hybrid model gives the option of controlling crane movements via an electric motor.

The LTM 1300-6.4 is a versatile and economical fast-erecting crane with an unparalleled telescopic boom length of 90 metres – also featuring the new LICCON3 control.



Crawler cranes

Whether in the wind industry, for heavy lift applications or for lifts with a particularly long jib length: Liebherr crawler cranes are used worldwide in applications where heavy loads have to be moved safely and efficiently. They are developed and built in Ehingen in Germany and in Nenzing in Austria.

Genuine powerhouses

The Liebherr crawler cranes impress thanks to their excellent load capacities of up to 3,000 tonnes, impressive lifting heights and outreaches. The dimensions and weights of the components which are suitable for transportation make the cranes particularly mobile. The models also impress with accurate control technologies, innovative materials, quality and reliability.

Liebherr crawler cranes are currently helping to drive forward climate reversal with the expansion of renewable energies on land and water.

Wide product range

The Liebherr factory in Ehingen manufactures crawler cranes for applications in wind energy and infrastructure, as well as for the heavy-lift sector. Equipped with extremely variable boom systems, they deliver load capacities up to 3,000 tonnes for diverse lifting duties.

Liebherr-Werk Nenzing GmbH manufactures crawler cranes with lower load capacities, especially for the multi-purpose area. Their robust steel structure reduces wear and ensures a longer lifetime. As part of the so-called unplugged series, these crawler cranes are also available in a battery-powered, electric version. All Liebherr crawler cranes are optimised for global use and efficient transport.

Digital solutions and services for the construction site of the future complete the product portfolio. For instance, Liebherr has developed the modern lift planning software Crane Planner 2.0 for mobile and crawler cranes.

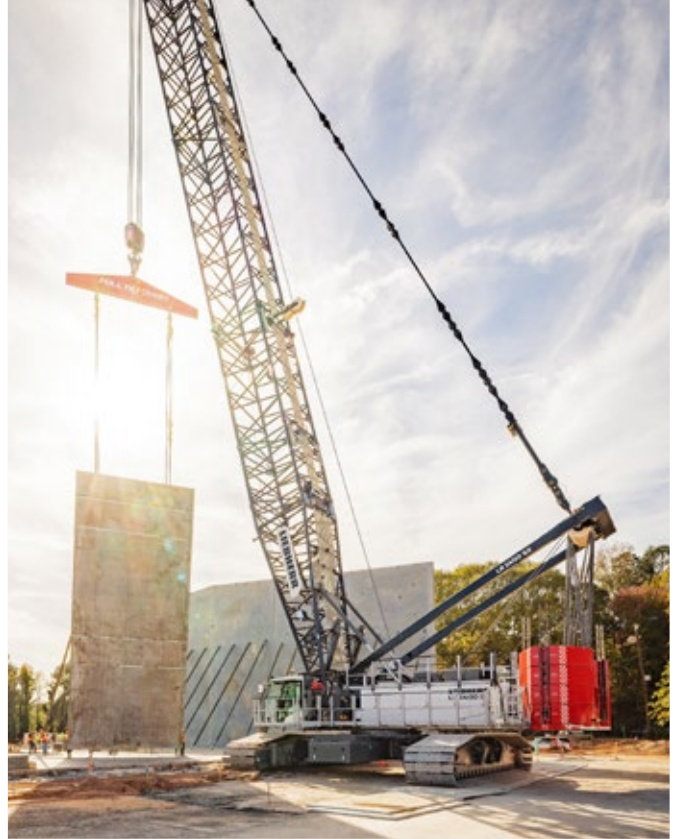
This helps to take all eventualities on the construction site into account and to find solutions in advance so that every lift can be optimally mastered.



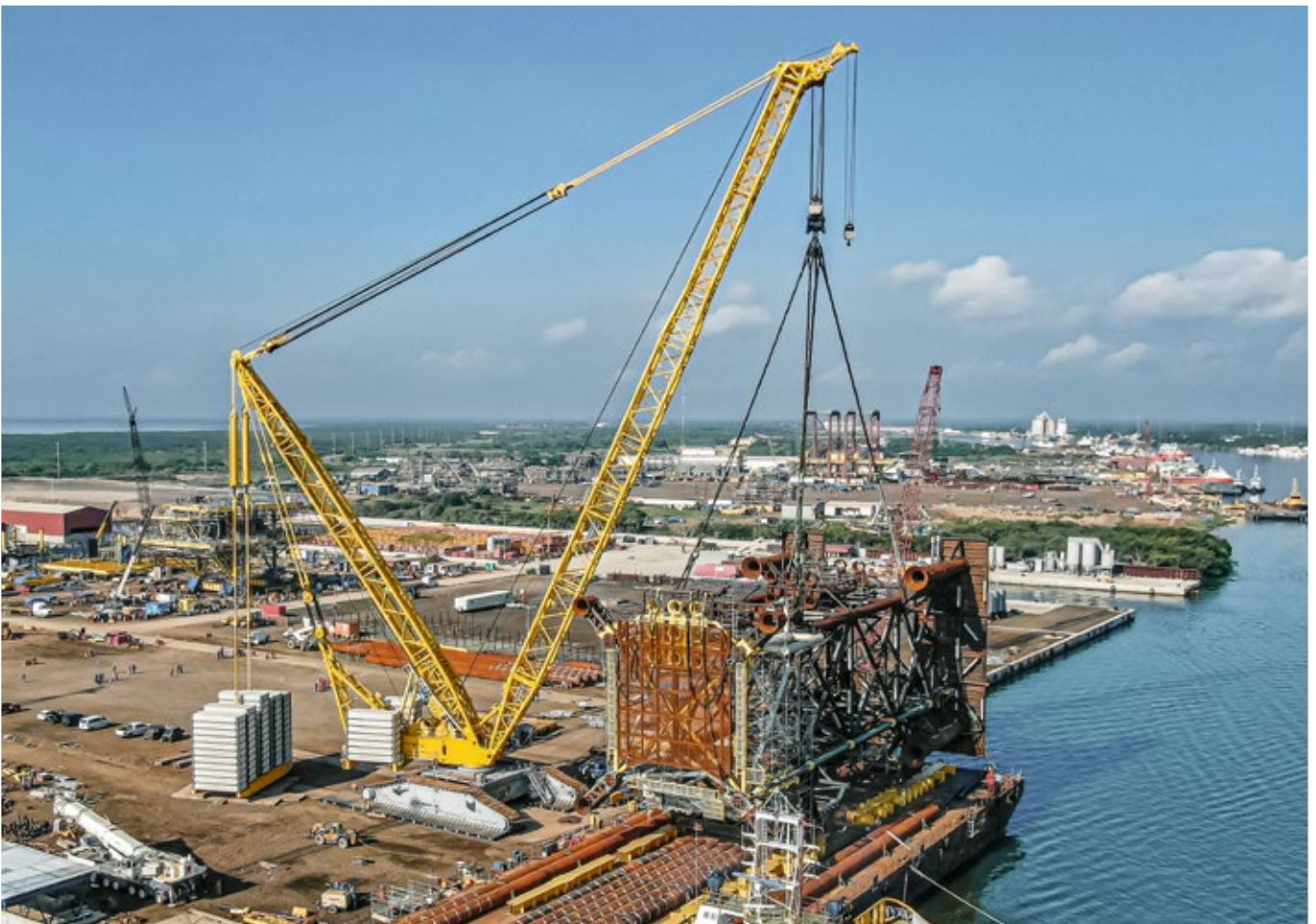
The LR 1800-1.0 impresses with exceptional load capacity, economical transport and versatile application possibilities.



The battery-powered LR 1250.1 unplugged carrying out lifting work in London (UK)



The LR 1400 SX crawler crane lifting particularly large concrete slabs in Atlanta (USA)



The LR 13000, the world's strongest conventionally designed crawler crane, loads vast oil platforms in Mexico.

Mobile construction cranes

The mobile construction cranes of the MK series combine the mobility of a classic mobile crane with the functional advantages of a tower crane such as working at projecting edges or the high handling capacity. The Liebherr-Werk Biberach GmbH in Germany works closely with other Liebherr plants on the development of these cranes.

Flying high

In 2000, Liebherr presented the first mobile construction crane with the MK 80, whose undercarriage and upper-carriage formed a single unit. Apart from three- and four-axle vehicles, the Liebherr portfolio also includes the largest five-axle mobile construction crane on the market. This reaches hook heights of up to 94.4 m.

Fantastic advantages

The extremely agile taxi cranes of the MK series are designed for one-person operation. The crane driver can move and mount the MK alone, and operate the crane by means of remote control or in an elevator cab with adjustable height. Mobile construction cranes reveal their true strengths in particular where space is limited. The vertical tower enables work directly at the building, where the entire jib length can always be used. With the variable steering concept and the active rear-axle steering mobile construction cranes fit in almost every gap.



The MK mobile construction cranes, such as the new MK 120-5.1 shown here, can perform several applications in one day. Operated using site power, they produce zero local emissions.



The MK 140 in luffing mode during the exchange of antenna technology of a telecommunications tower



The specialist concept makes the MK cranes mobile and extremely compact. This enables them to achieve a high reach, as demonstrated in Gießen (Germany).



The MK 73-3.1 is designed for applications in densely populated city centres – like here in Grave (Netherlands).

Tower cranes

The invention of the mobile tower crane in 1949 not only represents the birth of this product, but also the entire Liebherr Group. Liebherr Tower Cranes is now a successful global provider of tower cranes with three production sites in Biberach (Riß) in Germany, Pamplona in Spain and Pune in India.

Large product range

The portfolio covers a wide range of high-quality tower cranes of all systems and size classes. These include fast-erecting cranes, top-slewing cranes, luffing jib cranes and special cranes. The flexible fast-erecting cranes and high-performance top-slewing models prove themselves in residential construction, as well as in industry and large projects all over the world.

Services complement the technology

As a supplement to the products, Liebherr Tower Cranes offers a wide range of services. Tower Crane Solutions advises and plans for special projects; Tower Crane Customer Service guarantees spare parts supply and offers support for crane erection and comprehensive maintenance activities, as well as a broad range of training courses. The Tower Crane Center supports customers and partners all over the world in the rental and used crane business.



Serving culture and education: top-slewing cranes used in the construction of the M+ museum in Hong Kong (China)



The 53 K fast-erecting crane at work on the construction of the YURII bridge in Nagano (Japan)



HC-L tower cranes at work on the construction of the Seascape tower block in Auckland (New Zealand)



EC-B cranes at work on the construction of the Skypark Business Center in Luxembourg

Truck mixers and mixing plants

Liebherr can look back on over 60 years of experience in the development and manufacture of concrete mixing plants. The current portfolio of mixing plants ranges from small compact systems through to large plants for mass concrete for the construction of dams. These mixing plants are produced at sites in Bad Schussenried in Germany, Rayong in Thailand and Guaratinguetá in Brazil.

Modular concept and mobility of plants

The series of Betomix plants is particularly successful. These plants have a modular design and can be realised in countless variants and performance capacities depending on customer requirements. The mobile mixing plants of the type Mobilmix have also established themselves very well on the market. They can be constructed in two days and easily transported from one construction site to the next. Liebherr only uses highly efficient mixer systems developed by itself. The high weighing accuracy of the Liebherr mixing plants ensures considerable cement savings and high efficiency for the operator.

Ready-mix concrete

Truck mixers from Liebherr are used worldwide; over 100,000 units have already been manufactured and sold. The programme starts with the agile small types from 8 m³ nominal volume for use in halls of concrete and pre-fab factories. In the area of ready-mix concrete, mainly types with 9 or 10 m³ nominal volume are used. Depending on the country of operation, truck mixers up to 16 m³ are possible. The programme is rounded off by semi-trailers with a high load capacity. A useful optional accessory is the LTB conveyor belt. Concrete, sand or gravel can be distributed or poured directly at the construction site.





The HTM 1004 ZA/38 truck mixer is approved for a total weight of 38 t.



The HTM 1005 truck mixer with LTB 12+4+1 double telescopic conveyor belt



The HTM 905 truck mixer is the best-selling model.



Electric truck mixer from the new 05 generation

Concrete pumps

Liebherr has the entire variety of high-quality concrete pumps 'Made in Germany'. The innovative design, as well as a global service network, ensure high availability and maximum customer value.

Truck-mounted concrete pump with extra stability

Liebherr manufactures truck-mounted concrete pumps with a vertical reach from 24 m to 50 m. The smaller types impress primarily with their compact design and low unfolding heights. They can therefore also be used inside buildings. The larger truck-mounted concrete pumps are supplied with the XXT support. This outrigger is particularly flexible in use, very stable and absorbs forces directly from the boom without taking unnecessary turns. The powerful pump units are characterised by smooth running and a long service life.

Enormous performance of stationary pumps

The stationary pumps from Liebherr are suitable for all types of pumping on construction sites over longer periods. There are different performance classes with pumping capacities of up to 135 m³ per hour. Depending on the type of application, trailer or crawler concrete pumps are used.



36 XXT truck-mounted concrete pump



110 D-K crawler concrete pump, 110 D trailer concrete pump



Port equipment

For cargo- and container-handling requirements in seaports and inland ports, the Maritime Cranes product division manufactures various container-handling cranes, mobile harbour cranes and stackers in plants in Killarney in Ireland, Nenzing in Austria, Rostock in Germany, as well as Sunderland in the United Kingdom.

Mobile harbour cranes

The series of mobile harbour cranes includes six sizes with load capacities from 64 t to 308 t. With deliveries to over 100 countries worldwide, Liebherr mobile harbour cranes impress in all applications. Their flexible fields of application include highly efficient container handling, bulk cargo handling, handling of scrap or general cargo, as well as heavy lifting – with a simple exchange of the lifting attachment. Outstanding 360° mobility and the stepless hydrostatic power transmission make the Liebherr mobile harbour crane to one of the most powerful material handling machines in the world.

In addition to the conventional portfolio, Liebherr also offers the LPS 420E, a 100 % electrically driven portal crane.

Container cranes

Ship to shore cranes are available in sizes from panamax through to the latest generation of megamax cranes which are capable of handling the world's largest container vessels. For land-side container stacking, electric (Busbar, CRD), hybrid or diesel rubber tyre gantry cranes work stacks of up to ten containers wide and six high, whilst rail-mounted gantry cranes offer one over eight stacking and spans of up to 70 m and beyond. Full- and semi-automation options along with remote control via the Liebherr Remote Operator Station (ROS) is available for all container cranes.

Fixed port solutions

The FCC fixed cargo cranes and the LFS fixed slewing cranes are both flexible and space-saving solutions for any material handling. They are installed on quaysides, landing bridges, dockyards and other harbour areas. These cost-effective solutions are designed for multi-purpose use, including container as well as bulk cargo handling.



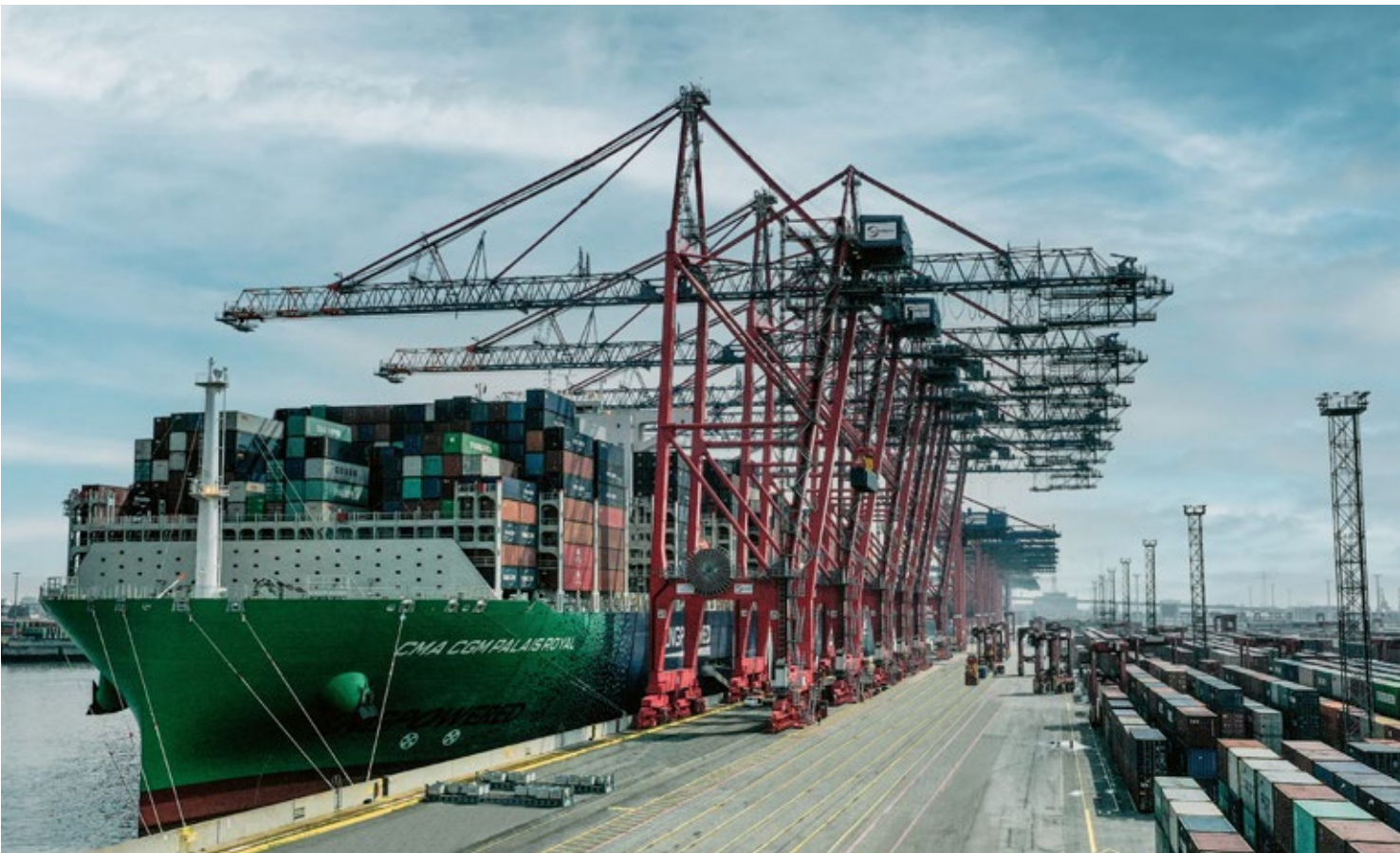
An FCC 280 fixed cargo crane handling containers in San Antonio (Paraguay)



Liebherr electric drive rubber tyre gantry cranes at Montreal Gateway Terminals (Canada)



Two LHM 550 mobile harbour cranes in tandem lift operation at the Antwerp Euroterminal (Belgium)



Liebherr ship to shore cranes at Eurogate Container Terminal Hamburg (Germany)

Ship, floating and offshore cranes

With the product series of ship cranes and floating transshipment cranes, Liebherr offers practical handling equipment for all types of ships, barges and transshipment solutions. The diverse range includes wire luffing and cylinder luffing ship cranes for container, general cargo and bulk cargo handling, as well as heavy lift cranes. High performance four-rope grab cranes designed for continuous operation are particularly suitable for loading and unloading bulk cargo – both in sheltered waters and on the open sea. Space-saving crane installations for use on wharfs, at ports and at shipyards are also a part of the ship cranes range. These cranes are either mounted on permanently installed supports (fixed cargo cranes) or on mobile gantries (traveling cargo cranes). The product portfolio is extended by our electric flagships. In the ship crane sector, this is the LS 800 E heavy-lift ship crane and in the transshipment sector, we score points with the CBG 500 E as the first fully electric transshipment crane.

Versatile deployment possibilities

Offshore cranes from Liebherr are used for a wide range of applications. They are used for the installation of offshore wind turbines, as supply cranes on unmanned platforms or in the dismantling of decommissioned platforms. They also support the laying of pipelines and telecommunication cables on the seabed.

The range of offshore products is very diverse. It includes both cranes from the general purpose offshore crane segment, which start at a lifting capacity of 30 tonnes, and heavy-duty cranes, which round off the portfolio at the top end with loads of up to 5,000 tonnes.

The large heavy-duty cranes with lifting capacities of more than 1,000 tonnes are mainly used in laying the foundation and maintenance of wind turbines.

As a fully digital, remote-controlled and semi-automatic maintenance system that saves the platform operator investment and resources, Liebherr Intelligent Maintenance (LiMain) represents a new level of independence for manned and unmanned platforms.

Safe and field-tested

Over 1,000 cranes are already in use. These cranes are available with either electric or diesel-hydraulic drive systems, as well as fully electric drive systems, and can be designed for safe or hazardous operations depending on specific requirements. Furthermore, all safety-relevant components and electrical systems are designed to be explosion-proof according to ATEX and IECEx standards. The cranes are used in regions with both tropical and arctic temperatures.



The RL 1500 from the RL series is characterised by its particularly optimised and compact design. It can be used for maintenance and supply work on both fixed and floating offshore installations.



This CAL 45000 offshore crane, which is designed as a crane around the leg, in operation on-board the 'Vole au Vent', can lift up to 1,200 tonnes.



The LS 250 as part of the versatile ship crane portfolio is one representative of Liebherr's high performance heavy-lift solutions.



The Liebherr CBG 360 doing dry bulk cargo handling on a transshipment barge in Vietnam

Aerospace

Liebherr is a leading system supplier for the aviation industry and has more than six decades of experience in this field. The range of aviation equipment produced by Liebherr for the civil and defence sectors includes flight control and actuation systems, landing gears, as well as environmental control and thermal management systems.

Diverse use

These systems are deployed in wide-body aircraft, single-aisle and regional aircraft, business jets, advanced air mobility (AAM) vehicles, helicopters as well as air taxis. They make a substantial contribution to the performance of the aircraft and to the safety and comfort of passengers and crews.

Highly innovative

With its advanced product solutions and state-of-the-art research, development and test facilities, Liebherr is a partner to its customers for the development of next-generation aircraft platforms, which will be more efficient and more sustainable.

Comprehensive capabilities

Liebherr has two original equipment manufacturing sites at Lindenberg/Friedrichshafen in Germany and at Toulouse in France and a low cost production site in Guaratinguetá in Brazil. Worldwide OEM customer services are supported by additional service centres in Saline (Michigan) and Seattle (Washington) in the USA, Montreal in Canada, Sao José dos Campos in Brazil, Hamburg in Germany, Dubai in the UAE, Bangalore in India, Singapore, and Shanghai in the People's Republic of China.

The customer service activities include repair and maintenance work, technical support, documentation and spare parts, as well as an AOG service (Aircraft on Ground). As a reliable partner to aircraft manufacturers and operators, Liebherr covers the entire life cycle of an aircraft.

The Airbus A350 flies with Liebherr technology.





Deployment of customer service staff at a landing gear



Working on air-conditioning system components



Certification of an actuator



© Airbus Helicopters

H135 with main and tail rotor servo controls from Liebherr on board

Transportation systems

Liebherr-Transportation Systems is a well-known manufacturer of systems and components for rail applications and commercial vehicles. The company, whose head office is in Korneuburg in Austria stands for competitive technical solutions in the area of conventional and advanced air-conditioning systems, passive and active hydraulic systems and electronic components for all types of rail vehicles, and draws on many years of experience in the development and manufacture of these technologies. Besides its solutions for the rail industry, Liebherr provides refrigeration units for refrigerated semi-trailers and dampers for articulated buses.

System solutions for comfort and safety

The customised system solutions are successfully used in high-speed trains, long-distance trains, light rail vehicles, other rail vehicles, as well as different kinds of commercial vehicles. They improve the ride comfort and increase safety.

With continuous investment in research and development, Liebherr-Transportation Systems designs systems and components for the future of mobility, providing solutions with low global warming potential using air cycle technology or CO₂ and propane as a coolant.

Global presence

In addition to its OEM and production sites in Korneuburg in Austria, Marica in Bulgaria, and Pinghu in China, Liebherr has sales and service sites for transportation systems located in Mannheim in Germany, Paris in France, Bangalore in India, Laval in Canada, Saline in Michigan in the United States, Reiden in Switzerland as well as in London in the United Kingdom.



Ice test of an HVAC system



Maintenance of an electro-hydraulic actuator



© Stadler
Liebherr supplies FLIRT diesel-electric low floor units with dampers for the pneumatic levelling system.



© Siemens / Markus Frieder
Siemens and Liebherr developed an electro-hydraulic brake actuator that is implemented on X-Wagen metros in Vienna (Austria).



© ÖBB / Harald Eisenb
Modern air-conditioning technology from Liebherr ensures travel comfort in ÖBB's Railjets.

Gear cutting machines, gear cutting tools and measuring technology

Liebherr-Verzahntechnik GmbH in Kempten in Germany develops and manufactures high-quality gear cutting machines and measuring devices in Kempten, gear cutting tools in Ettlingen in Germany and in Collegno in Italy. The innovative products are distinguished by their high precision, availability and user-friendliness. Furthermore, customers around the world value the outstanding energy efficiency and cost effectiveness of the machines and systems.

Gear cutting machines

Liebherr offers a wide selection of high-quality gear cutting machines. The division is continuously further developing the machines and particular emphasis is placed on high energy efficiency. From the automotive industry to wind turbine manufacturers, customers around the world trust Liebherr machines.

The range of gear cutting machines includes gear hobbing machines, gear shaping machines, gear skiving machines, as well as profile and generating gear grinding machines, for soft and hard machining of cylindrical gearing with workpiece diameters up to 16,000 mm. With the new user interface, the gear cutting machines from Liebherr are particularly intuitive and comfortable in operation.

Gear cutting tools

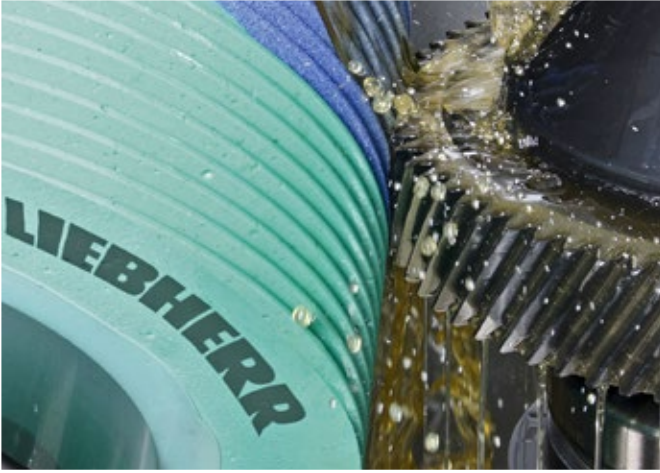
Liebherr is one of the world's leading manufacturers of gear cutting tools and stock tools. Liebherr develops individual solutions for customers. Included in the scope of services are special designs for all gears capable of being made through shaping. Moreover, Liebherr ensures high-quality machining of gear cutting tools from all manufacturers. Innovative developments and the long service life of the tools distinguish the division as a reliable partner.

Measuring technology

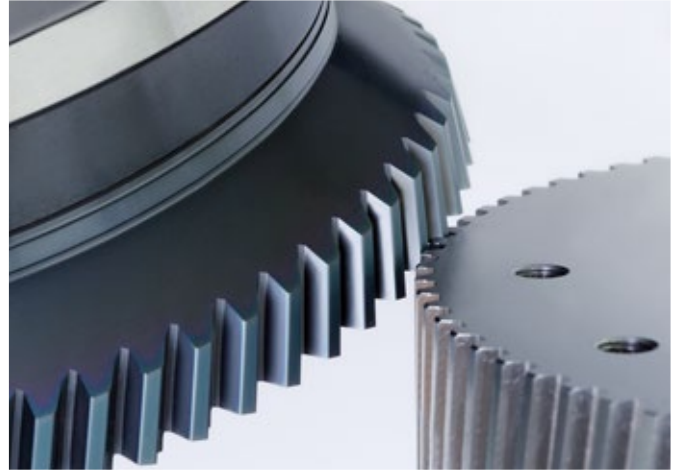
The offer from Liebherr includes a wide range of measuring devices. The combination of high-precision measuring mechanics and the specially developed gear measuring software guarantees precise measuring results.

Liebherr gear cutting machines for soft and hard machining of cylindrical gearing with workpiece diameters between 60 mm and 16,000 mm





Fine machining through grinding and polishing



New tool for gear skiving machines



Automation systems

In the automation systems area, Liebherr has established itself worldwide as a specialist for automation solutions. Liebherr-Verzahntechnik GmbH produces in Kempten in Germany systems for the automation of machine tools, as well as innovative solutions in manufacturing and factory automation.

From robots to handling systems

The broad range of automation systems ranges from linear robots and robot applications to conveying and storage systems through to solutions for pallet-handling systems. This makes it possible to implement projects in all areas of production and assembly. Liebherr guarantees the customer above-average availability of the systems.

Lower costs and greater flexibility

Automation solutions from Liebherr reduce production costs and enable a flexible response to changes in demand from the market at short notice. They are essentially designed for economy, ease of use, quality and reliability in combination with a high degree of flexibility.



The plastic chain conveyor (KKB) as conveying system for crankshafts for example



Bin Picking: economic unloading of bulk materials



Gantry robot for workpieces with weight between 0.5 kg to 1,500 kg



Linear pallet handling system (PHS) for transport loads from 500 kg to 13,000 kg

Domestic appliances – Household

In the Domestic Appliances product segment Liebherr has been specialising in high-quality and innovative refrigerators and freezers for seven decades. With annual production of almost 2.2 million appliances, Liebherr Domestic Appliances is one of the leading European premium providers, whose sustainable solutions combine durability and design.

The right solution for every requirement

The appliances from Liebherr are both a design highlight and space miracle for kitchens and living rooms. Customers expect maximum flexibility in the planning and design of the kitchen or when replacing a refrigerator unit. Liebherr Domestic Appliances offers an appropriate solution for every situation in life with the wide range of refrigerator and freezer units. The product development is aimed both at the needs of the customers and social and societal developments.

Market-fresh even at home

Healthy food and a sustainable lifestyle are current social mega trends. Anyone who maintains a balanced diet and buys market-fresh fruit and vegetables also wants to keep these products fresh at home for as long as possible. This is why Liebherr develops clever features and solutions for every requirement. Technologies such as BioFresh and DuoCooling help to reduce food waste. So, with perfect food storage equipment, our customers can save not only money but valuable resources too.

Energy efficiency meets elegant design

The entire range of Liebherr domestic appliances is characterised by a clever design that is designed for elegance and comfort. Designed and built with a focus on high-quality and premium materials, Liebherr ensures a long service life for its appliances. This durability also extends to the energy efficiency: not only are refrigerators and freezers from Liebherr among the most energy-efficient in their class, but they also continue to ensure low energy consumption for users for many years thanks to high-quality insulation technology.

Modern manufacturing network

Liebherr appliances are manufactured at sites in Germany, Lienz in Austria, Marica in Bulgaria, Kluang in Malaysia and Aurangabad in India. The range includes integrated and freestanding refrigerators as well as combinations and freezers. The unique and extensive portfolio also incorporates wine refrigerators, wine storage cabinets and customised solutions.



With the BioFresh technology, food which is rich in vitamins and minerals is stored at the correct temperature and the ideal humidity.



Example of elegant design: new variants of freestanding and built-in appliances with a premium sophisticated BlackSteel interior add a key accent to dark modern kitchen designs.

The high-quality, durable refrigerators and freezers from Liebherr deliver innovative features when it comes to energy efficiency, noise, design, freshness technologies and smart convenience.



Domestic appliances – Commercial

Liebherr-Hausgeräte also offers a high-quality and diverse product programme for commercial applications. In professional operations, the appliances have to work reliably and economically in extreme conditions. Thanks to high-quality equipment features, they meet the professional standards in hospitality, retail, business, laboratories and healthcare sectors.

Modern appliances for professionals

Particularly high requirements are placed on commercial appliances. They offer all the advantages that really matter in a professional setting: high-quality components and maximum useful volume, efficient cooling power and exemplary easy-to-clean design. The highly efficient refrigeration components make possible constant cooling – also with frequent opening and closing of the doors. Powerful and natural refrigerants combined with precision electronics ensure that the quality and freshness of the stored food, in grocery stores for instance, is kept at its best for as long as possible. The range is enhanced with special design highlights: for example, large glass doors and innovative lighting options. For laboratories and healthcare facilities, Liebherr appliances deliver maximum reliability when it comes to storing sensitive substances at constant temperatures. The SmartMonitoring networking solution also controls the temperature stability and sounds an alarm in the event of deviations. This not only keeps the storage conditions consistent, but also preserves the value of the stored goods.

EcoVadis certificate for sustainability

Liebherr has a stated aim when designing its appliances: namely to minimise the environmental impact of its products through every stage of their life cycle. This pledge has already been recognised by the sustainability ratings agency EcoVadis with a gold medal in 2023. This places Liebherr among the top three percent of all companies assessed by EcoVadis. Valuable resources must be conserved, not only in the manufacture of the product but also in its use. This is why Liebherr appliances consume very little energy and fall within the most economical energy efficiency classes. Plus, since 1993, Liebherr has been steadfastly expanding its use of natural refrigerants and now uses the natural refrigerants R600a and R290 exclusively. The global warming potential, measured in GWP, of these refrigerants is demonstrably lower than that of the fluorohydrocarbons still regularly found in use. Natural refrigerants are designed specifically for ultra-efficient compressors and guarantee low energy consumption.



For the reliable cooling of temperature-sensitive substances and sensitive medicines, Liebherr provides high-quality refrigerators and freezers alongside innovative monitoring solutions and comprehensive service packages.



Liebherr's Cliff freezer unit fulfils the retailer's need for attractive product presentation, while also keeping energy consumption and maintenance requirements low and ensuring maximum space productivity and user-friendly design.

Liebherr offers a premium range of professional products and solutions. These answer the specific requirements of users by delivering exceptional standards in sustainability and optimised overall costs.



Combustion engines and injection systems

Since 1984, Liebherr has been developing and manufacturing high-performance and robust combustion engines for diverse industries. Combustion engines from Bulle in Switzerland and Colmar in France are used in building construction and civil engineering, mining, special vehicles, stationary applications, as well as agriculture and forestry machinery.

Powerful combustion engines based on a modular design

Liebherr's combustion engine portfolio covers a broad power range from 130 kW to 4,290 kW. The 4- to 20-cylinder engines offer numerous customer benefits: efficient performance, robust design and simple maintenance. Thanks to the modular design, the various engines can be easily adapted to customer requirements and applications. Liebherr also offers exhaust gas aftertreatment systems in line with the legal requirements in the various regulated markets. For both Tier 4 and Stage V, Liebherr relies on in-house developed aftertreatment technologies. The innovative SCRonly technology is used for engines above 560 kW to reach optimum engine performance and emission reduction. The SCRFilter system is used for engines below 560 kW to reduce all types of gaseous pollutants – from nitrogen oxides to particles.

Future-proof fuel injection systems

Since 2013, Liebherr has been producing its own injection systems in Germany and Switzerland. The reliable common rail systems and engine controls by Liebherr guarantee high efficiency of the engine with low fuel consumption. As a result, they enable compliance with the increasingly stricter emissions standards for diesel engines.

In parallel, Liebherr is also developing injection concepts for alternative fuels, contributing to a significant reduction in the carbon emissions of combustion engines.

Striving to reach net zero emissions in the future, Liebherr works on alternative and climate-friendly powertrain concepts and thereby pursues an open-technology approach. In the field of internal combustion, the focus of the research and development activities lies on multiple solutions, depending on the future requirements in different fields of application.

As far as exhaust emissions are concerned, it is not as much about the combustion engine as such, but the fuel that powers it. To enable climate neutrality, fuels from renewable energies or sustainable sources must be used. These are, for example, hydrogen, hydrotreated vegetable oil (HVO), ammonia or e-fuels.



The best-in-class 6-cylinder in-line engine D976 for off-road applications



Assembly of common rail systems in the cleanroom



Assembly line for v-engines

Hydraulic and mechanical drive technology

A wide range of components of the hydraulic and mechanical drive technology is developed and manufactured at a total of six production sites in Europe, Asia, as well as in North and South America. The broad range of services also includes the remanufacturing of used components, among other things.

Durable hydraulic pumps and motors

Since 1978, Liebherr has been offering high-quality axial piston pumps and motors for open and closed circuits. The durable units for the medium- and high-pressure range cover numerous applications in mobile and stationary hydraulics. Splitter boxes with the possibility of direct assembly of hydraulic units complete the product programme.

Diverse slewing bearings and compact slew drives

Liebherr manufactures ball bearing and roller bearing slewing rings, as well as tapered roller bearings of various dimensions and versions. Decades of experience, comprehensive engineering expertise, together with state-of-the-art manufacturing plants, ensure top-quality products. Roller bearings with diameters sometimes ranging over 10 metres are used not only in construction machines and cranes, but also in wind turbines, maritime applications and tunnel boring machines.

With their high power density and compact design, Liebherr's slew drives are particularly suitable for the transfer of high forces and torques in a small package space.

Equipped for tough conditions: gearboxes and rope winches

Every year, Liebherr manufactures tens of thousands of gearboxes and rope winches with the utmost reliability and quality. Liebherr offers a wide choice of gearboxes – from slew drives, travel drives or planetary plug-in gearboxes through to various types of rope winches.

Hydraulic cylinders, dampers and piston accumulators

In close cooperation with customers, Liebherr is developing hydraulic cylinders as innovative solutions for earthmoving and mining equipment, crane and maritime applications, as well as lightweight construction. The product portfolio comprises a standard series-production range, single- and double-acting cylinders, as well as large cylinders and robust shock absorbers. Liebherr attaches great importance to the durability of its hydraulic cylinders. Their design allows for repeated remanufacturing through Liebherr's remanufacturing programme, whenever needed. The product spectrum also includes a piston accumulator series-production range and weight-optimising fibre composite solutions. Customer-focused approach makes Liebherr provide the right state-of-the-art hydraulic component for any application.

Components made from carbon fibre reinforced plastic (CFRP)

Fibre composite technology offers maximum design flexibility in component development. The combination of carbon and plastic creates an innovative material, the mechanical properties of which are specifically adaptable to the requirements of the end product. This results in customised solutions for a wide range of applications – also in combination with the existing portfolio, for example as hybrid hydraulic cylinders. By using a CFRP winding on the hydraulic cylinder, the weight of the component can be significantly reduced within the same installation space. CFRP can be used, wherever weight optimisation is required to improve the performance of the component, and thus the efficiency of the overall system. Liebherr's experience in cylinder development combined with the expertise in the field of fibre composites creates optimum conditions for innovation. From the development of an individual composite solution to the production of a component itself – Liebherr unites the entire process chain under one roof.



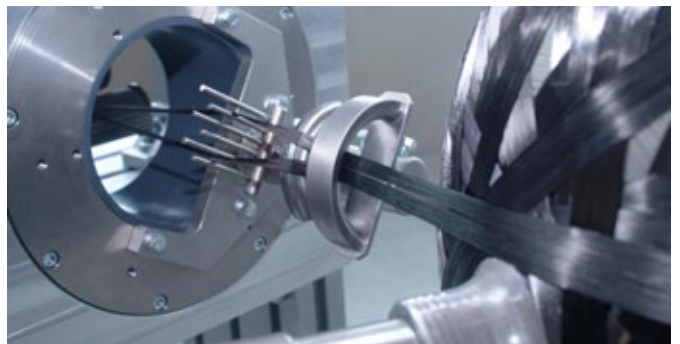
Assembly of DAT 1000 slew drives



Robotised coating line for hydraulic cylinder series-production ranges



Inductive hardening of slewing bearings



CRP production using the in-house robotised winding machine



Long service life, low installation space and low maintenance – the slew drives from Liebherr

Electric drive technology and electronics

Liebherr offers a wide range of reliable products in the fields of drive and control technology, as well as solutions and services in the field of electronics.

Camera-monitor systems and IoT gateways

Digital cameras and display controllers by Liebherr ensure high image quality and comfort in the driver's cab. The 360° LiXplore® surround-view system enables easy manoeuvring of the machine. Liebherr also has secure end-to-end IoT solutions in its product portfolio, and these are suitable for AI applications thanks to the powerful hardware.

Control electronics and services

Customised electronics impress in mobile machinery or special vehicles. In aerospace and rail technology, individually designed assemblies are used in ventilation and cooling systems, among others. In its in-house electronics competence centre in Lindau in Germany, Liebherr also offers a comprehensive range of services – from development and production to qualification.

Power electronics with high availability

Liebherr power electronics for industrial applications were developed for use under harsh environmental conditions. The frequency converter systems, power modules and DC/DC converters impress primarily with their high power density, availability and efficiency. Power electronics for aerospace are used in flight control systems, refuelling systems and ventilation as well as cooling systems.

Control cabinets for every customer requirement

As a development partner, Liebherr offers customised control cabinets. Liebherr also manufactures one-offs, as well as small- and medium-scale quantities. These are designed according to the respective requirements, for example, a higher degree of protection or special installation dimensions. Liebherr also designs customised electric drive systems for stationary and mobile applications.

Efficient electric machines

For over 60 years, Liebherr has been developing and manufacturing efficient electric motors and generators for diverse customer needs. State-of-the-art design and simulation processes are the foundation for the construction of compact asynchronous and permanent magnet motors, as well as synchronous and asynchronous generators with high power density.

Energy and power storage

The electrification of construction sites and many other areas continues to increase. In order to meet the requirements, Liebherr develops stationary and mobile energy storage systems with high power and energy density that enable locally emission-free and highly efficient operation of electric machines and vehicles.



Installation of control cabinets for container cranes



Winding of electric machines for mining trucks and port cranes



Liebherr operates a modern, well-equipped test centre at its competence centre for electronics in Lindau (Germany).

Hotels of the Liebherr Group

Located in Austria, Ireland and Germany, surrounded by wonderful nature and furnished with great attention to detail, the hotels of the Liebherr Group offer guests a place to relax and unwind. The generously dimensioned rooms and perfect service leave nothing to be desired.

Six hotels – each with its own unique charm

Set in the middle of the Tyrolean mountains, the Inter Alpen-Hotel Tyrol is not only a secluded location, but also boasts large rooms, an exclusive spa and a multi-award-winning kitchen.

The Löwen Hotel Montafon impresses with Alpine hospitality, a pleasant atmosphere, wellness facilities and culinary delights. Following the extension work completed in 2023, the hotel now offers the largest conference facility in Montafon – as well as new bedrooms, various restaurants and even a nightclub.

In the southwest of Ireland guests can relax in The Europe Hotel & Resort, Ard na Sidhe Country House or The Dunloe Hotel & Gardens, explore the picturesque area, as well as enjoy lush green fields and enchanting lakes. The luxurious Europe Hotel also has a first-class spa, boasting a panoramic view of the fascinating nature. Lush gardens and woodlands are part of the Dunloe Hotel. Guests can fish in the hotel's own river and have the fish freshly prepared for dinner. Ard na Sidhe is an almost mystical location, radiating peace and tranquillity in an extraordinary countryside which invites guests to dream in this exquisite lodging.

Hotel Falken is located in the middle of the old town of Memmingen and has comfortable and modern rooms. It is an optimal base to discover the attractions of the town and the wonderful Allgäu region.



Löwen Hotel Montafon, Schruns (Austria)



Interlpen-Hotel Tyrol, near Seefeld (Austria)



The Europe Hotel & Resort, Killarney (Ireland)



Ard na Sidhe Country House, Killorglin (Ireland)



Hotel Falken, Memmingen (Germany)



The Dunloe Hotel & Gardens, Killarney (Ireland)

Product segments of the Liebherr Group

With a broadly diversified product programme, which includes a total of 13 product segments, Liebherr plays a significant role in advancing technology in numerous industries. The creative exchange between the segments encourages the development of innovations and visionary technologies, fascinating products and services, which make a real difference.



Earthmoving

At six sites in Europe, Asia and South America, Liebherr manufactures a wide range of powerful and high-quality earthmoving machines. In addition, Liebherr offers a comprehensive portfolio of tool attachments to expand the application possibilities.



Mining

In this product segment Liebherr supplies the international mining industry with highly specialised large machines for quarrying raw materials in surface mining. The mining excavators and dump trucks from Liebherr are manufactured at two sites in France and the USA, and are designed for harsh operating conditions.



Material handling technology

Liebherr develops and manufactures a comprehensive portfolio of powerful, efficient and reliable machines for handling materials and all types of cargo in Europe, Asia and South America. The global service network guarantees quick and professional local support.



Mobile and crawler cranes

Powerful mobile and crawler cranes with telescopic or lattice jibs are developed and manufactured in Germany and Austria. The product segment offers innovative digital solutions, as well as assist systems, and has a global sales and service network.



Deep foundation

To cover all current methods in special civil engineering, Liebherr offers a diversified product range of deep foundation machines with a variety of digital solutions and future-oriented technologies. The very efficient products in this segment are manufactured in Austria.



Tower cranes

In Europe and Asia, Liebherr develops and manufactures a broad product portfolio of tower cranes, as well as mobile construction cranes, which meet diverse requirements. Apart from crane systems for the most demanding applications, Liebherr provides reliable and sound project advice in this product segment.



Concrete technology

In the concrete technology product segment Liebherr maintains production sites in Europe, Asia and South America, as well as its own test centre with concrete laboratory. The comprehensive product range includes truck mixers, concrete mixing plants and concrete pumps.



Maritime cranes

A versatile range of products for cargo-handling in ports and at sea, as well as numerous digital solutions, characterise the Liebherr maritime cranes segment. The efficient products are manufactured on the German Baltic Sea coast, the Atlantic coast of Ireland and the North Sea coast of the United Kingdom.



Aerospace and transportation systems

In the aerospace and transportation systems product segment Liebherr is one of the leading solution providers in aviation and transportation. Liebherr contributes to more sustainable mobility through innovative products, first-class customer service and outstanding quality.



Gear technology and automation systems

Liebherr is one of the leading manufacturers of high-quality gear cutting machines, gear cutting tools, gear measuring machines and automation systems with future-oriented technologies. The products are manufactured in Germany, Italy and India, and are complemented by a global sales and service organisation.



Refrigerators and freezers

As a specialist for refrigeration and freezing, Liebherr offers the most extensive range of products of efficient refrigerating and freezer units for private and professional use. Longevity, innovative cooling technologies and a modern design are characteristic of the products which are manufactured at five sites in Europe and Asia.



Components

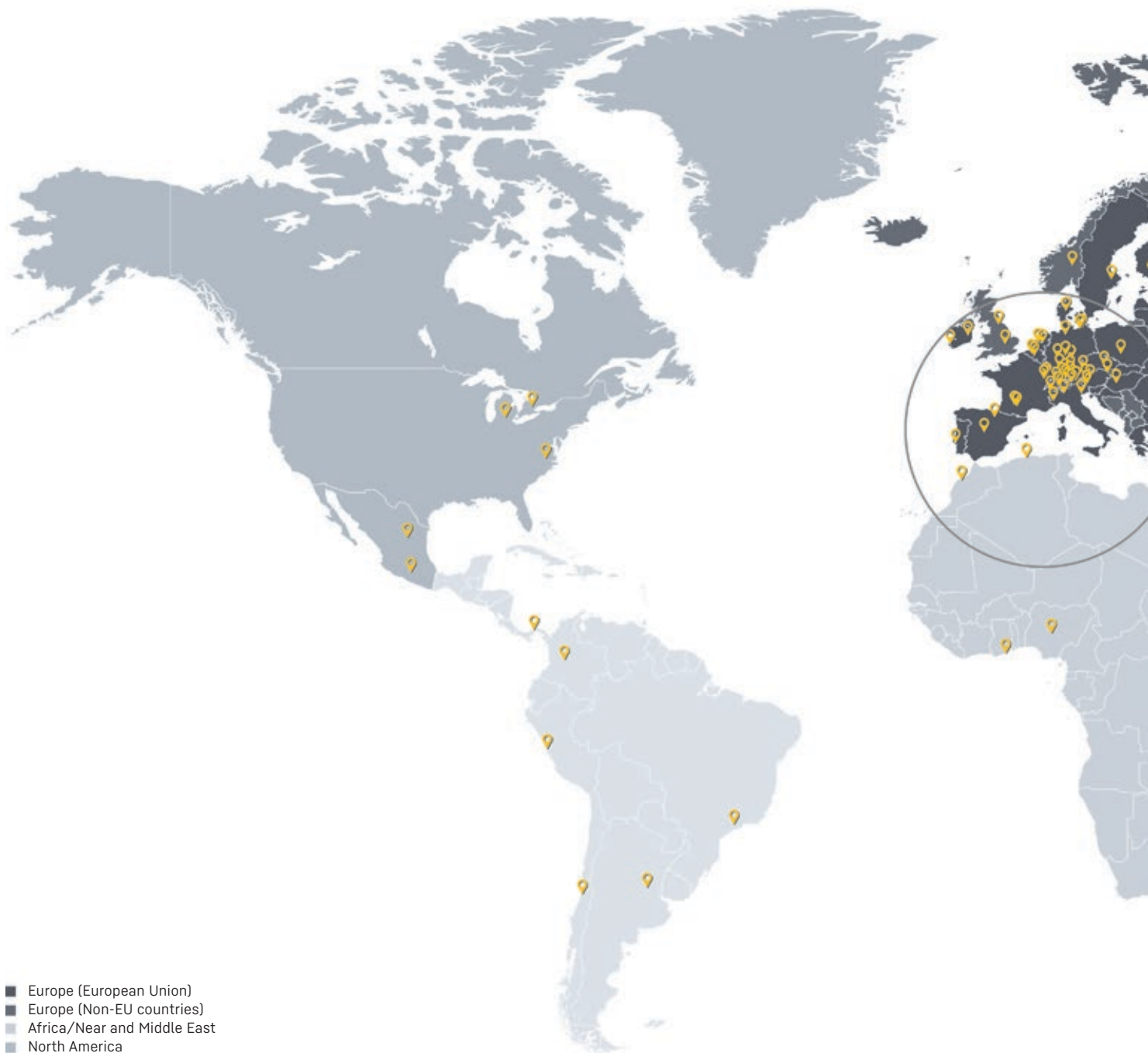
The development, design, production as well as reconditioning of powerful components in the area of mechanical, hydraulic and electric drive and control technology characterise the Liebherr product segment, which includes twelve production companies on four continents as well as a global service and sales network.



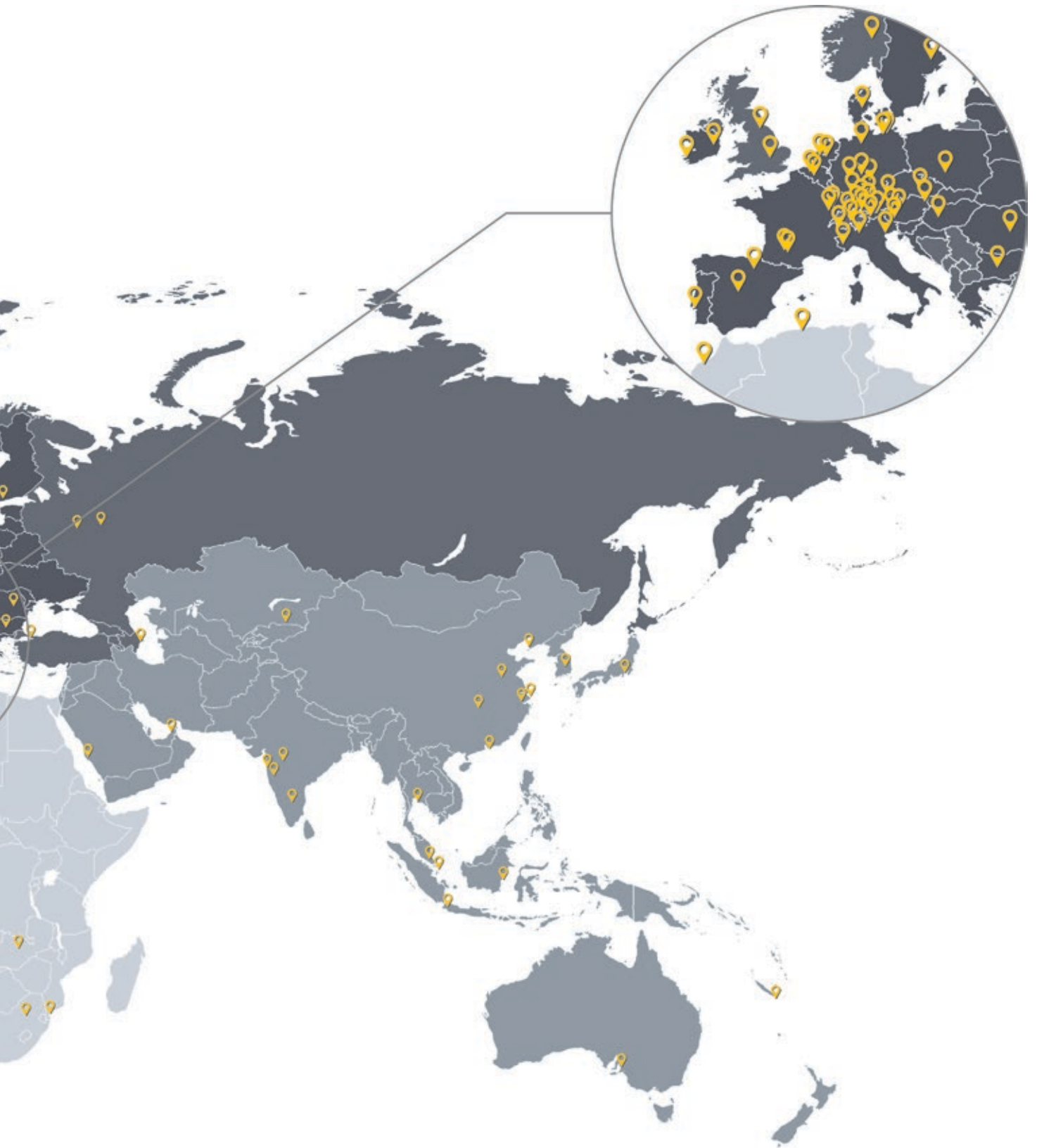
Hotels

The Liebherr Group operates a total of six premium hotels in Ireland, Austria and Germany.

Overview of the sites



Simplified overview for presentation purposes. As of: 31.12.2023



Liebherr Worldwide can also be found online at www.liebherr.com

Overview of the companies

Europe

Azerbaijan

Liebherr-Azeri LLC
Baku

Belgium

Liebherr-Appliances Belgium NV
Ternat
Liebherr-Belgium BV
Antwerp

Bulgaria

Liebherr-Concrete Technology Marica EOOD
Radinovo
Liebherr-Hausgeräte Marica EOOD
Radinovo
Liebherr-Transportation Systems Marica EOOD
Radinovo

Denmark

Liebherr-Danmark ApS
Horsens

Germany

Hans Liebherr-Hilfe e. V.
Biberach an der Riß
Liebherr-Aerospace Lindenberg GmbH
Lindenberg
Liebherr-Aviation GmbH
Biberach an der Riß
Liebherr-Baumaschinen Vertriebs- und Service GmbH
Dettingen an der Iller
Liebherr-CMCtec GmbH
Biberach an der Riß
Liebherr-Components GmbH
Biberach an der Riß
Liebherr-Components Biberach GmbH
Biberach an der Riß
Liebherr-Components Deggendorf GmbH
Deggendorf

Liebherr-Components Kirchdorf GmbH

Kirchdorf an der Iller
Liebherr-Digital Development Center GmbH
Ulm
Liebherr-Electronics and Drives GmbH
Lindau
Liebherr-EMtec GmbH
Kirchdorf an der Iller
Liebherr-Ettlingen GmbH
Ettlingen
Liebherr-Hausgeräte GmbH
Ochsenhausen
Liebherr-Hausgeräte Ochsenhausen GmbH
Ochsenhausen
Liebherr-Hausgeräte Vertriebs- und Service GmbH
Ulm
Liebherr-Hydraulikbagger GmbH
Kirchdorf an der Iller
Liebherr-International Deutschland GmbH
Biberach an der Riß
Liebherr-IT Services GmbH
Kirchdorf an der Iller
Liebherr-Logistics GmbH
Kirchdorf an der Iller
Liebherr-MCCtec Rostock GmbH
Rostock
Liebherr-MCCtec Vertriebs- und Service GmbH
Hamburg
Liebherr-Mietpartner GmbH
Ludwigshafen am Rhein
Liebherr-Mischtechnik GmbH
Bad Schussenried
Liebherr-Purchasing Services GmbH
Biberach an der Riß
Liebherr-Transportation Systems Mannheim GmbH
Mannheim
Liebherr-Verzahntechnik GmbH
Kempten

As of: 31.12.2023

Liebherr-Werk Biberach GmbH

Biberach an der Riß

Liebherr-Werk Ehingen GmbH

Ehingen (Donau)

Liebherr-Wohnungsbau GmbH

Kirchdorf an der Iller

TerraVac GmbH

Karlstadt

Zimmermann Optik GmbH

Roggentin

Finland

Liebherr-Finland Oy Ab

Helsinki

France

Liebherr-Aerospace & Transportation SAS

Toulouse

Liebherr-Aerospace Montauban SAS

Montauban

Liebherr-Aerospace Toulouse SAS

Toulouse

Liebherr-Components Colmar SAS

Colmar

Liebherr Distribution et Services France SAS

Niederhergheim

Liebherr-France SAS

Colmar

Liebherr-Location France SAS

Niederhergheim

Liebherr-Mining Equipment Colmar SAS

Colmar

Liebherr-Mining Equipment SAS

Colmar

Société de l'Aéroport de Colmar SAS

Colmar

Ireland

Killarney Hotels Ltd.

Killarney

Liebherr-Construction Equipment Ireland Limited

Rathcoole

Liebherr Container Cranes Ltd.

Killarney

Italy

Liebherr-EMtec Italia S.p.A.

Lallio

Liebherr-Italia S.p.A.

Monfalcone

Liebherr-Utensili s.r.l.

Collegno

Netherlands

Liebherr-Appliances Netherlands B.V.

Uithoorn

Liebherr-Maritime Benelux B.V.

Amersfoort

Liebherr-Nederland B.V.

Amersfoort

Norway

Liebherr-Norge AS

Ingeberg

Europe

Austria

Hotel Löwen Schruns GmbH
Schruns
Interalpen-Hotel Tyrol GmbH
Telfs
Liebherr-Hausgeräte Lienz GmbH
Lienz
Liebherr-International Austria GmbH
Bischofshofen
Liebherr-MCCtec GmbH
Nenzing
Liebherr Österreich Vertriebs- und Service GmbH
Puch bei Hallein
Liebherr-Transportation Systems GmbH
Korneuburg
Liebherr-Transportation Systems GmbH & Co KG
Korneuburg
Liebherr-Werk Bischofshofen GmbH
Bischofshofen
Liebherr-Werk Nenzing GmbH
Nenzing
Liebherr-Werk Telfs GmbH
Telfs

Poland

Liebherr-Polska sp. z o.o.
Ruda Śląska

Portugal

Liebherr Portugal, Lda.
Venda do Pinheiro

Romania

Liebherr-Romania S.R.L.
Bucharest

Russia

Liebherr-Aerospace Nizhny Novgorod OOO
Nizhny Novgorod
Liebherr-Aerospace Russland OOO
Moscow
Liebherr Financial Services OOO
Moscow
Liebherr-Nizhny Novgorod OOO
Nizhny Novgorod
Liebherr-Russland OOO
Moscow

Sweden

Liebherr-Sverige AB
Västerås

Switzerland

Eglesia AG
Bulle
Liebherr-Baumaschinen AG
Reiden
Liebherr-Components AG
Nussbaumen
Liebherr-Component Technologies AG
Bulle
Liebherr-Export AG
Nussbaumen
Liebherr-Hotels AG
Bulle
Liebherr-Industrieanlagen AG
Bulle
Liebherr-International AG
Bulle
Liebherr-Intertrading AG
Bulle
Liebherr Machines Bulle SA
Bulle
Mariso Bulle S.A.
Bulle

Africa/Near and Middle East

Spain

Liebherr Iberica, S.L.
Azuqueca de Henares
Liebherr Industrias Metálicas, S.A.
Pamplona

Czechia

Liebherr-Stavební stroje CZ s.r.o.
Brno

Turkey

Liebherr Makine Ticaret Servis Limited Şirketi
Istanbul

Hungary

Liebherr-Építőipari Gépek Magyarország Kft.
Győr

United Kingdom

Liebherr-Great Britain Ltd.
Biggleswade
Liebherr-Rental Ltd.
Biggleswade
Liebherr Sunderland Works Ltd.
Sunderland

Algeria

Liebherr Algérie, EURL
Algier

Ghana

Liebherr-Ghana Ltd.
Accra

Morocco

Liebherr-Maroc SARL
Casablanca

Mozambique

Liebherr-Mozambique, Lda.
Maputo

Nigeria

Liebherr-Nigeria Ltd.
Abuja

Zambia

Liebherr Zambia Ltd.
Lusaka

Saudi Arabia

Saudi Liebherr Company Ltd.
Jeddah (60 %)

South Africa

Liebherr Africa Holding (Pty) Ltd
Springs
Liebherr Africa Investment (Pty) Ltd
Springs
Liebherr-Africa (Pty) Ltd
Springs

United Arab Emirates

Liebherr Equipment Services Middle East L.L.C
Dubai
Liebherr Middle East FZE
Dubai

North America

Canada

Liebherr-Canada Ltd.
Burlington, ON

Mexico

Liebherr Mexico, S. de R.L. de C.V.
Mexico City
Liebherr Monterrey, S. de R.L. de C.V.
Monterrey
Liebherr Servicios Monterrey, S. de R.L. de C.V.
Monterrey

USA

HL Farm, LLC
Newport News, VA
Liebherr Aerospace Saline, Inc.
Saline, MI
Liebherr-America, Inc.
Newport News, VA
Liebherr Gear and Automation Technologies, Inc.
Saline, MI
Liebherr Mining Equipment Newport News Co.
Newport News, VA
Liebherr USA, Co.
Newport News, VA

Central and South America

Argentina

Liebherr-Argentina S.A.
Buenos Aires

Brazil

Liebherr Aerospace Brasil LTDA
Guaratinguetá
Liebherr Brasil LTDA
Guaratinguetá

Chile

Liebherr Chile SpA
Santiago de Chile

Colombia

Liebherr Colombia SAS
Bogotá D.C.

Panama

Liebherr Panama S.A.
Panama City

Peru

Liebherr Peru S.A.C.
Lima

Asia and Oceania

Australia

Liebherr-Australia Pty. Ltd.
Adelaide

India

Liebherr Appliances India Private Limited
Aurangabad
Liebherr CMCTec India Private Limited
Pune
Liebherr India Private Limited
Mumbai
Liebherr Machine Tools India Private Limited
Bangalore (60 %)

Indonesia

PT. Liebherr Indonesia Perkasa
Jakarta

Japan

Liebherr Japan Co., Ltd.
Yokohama

Kazakhstan

Liebherr Kasachstan TOO
Almaty
LHF Kasachstan
Almaty

Malaysia

Liebherr Appliances Kluang SDN. BHD.
Kluang
Liebherr Sales Kluang SDN. BHD.
Kluang

New Caledonia

Liebherr-Nouvelle-Calédonie SAS
Nouméa

Singapore

Liebherr-Singapore Pte Ltd
Singapore

South Korea

Liebherr Mobile Cranes Korea Ltd.
Seoul

Thailand

Liebherr (Thailand) Co., Ltd.
Rayong

PR China

Liebherr (China) Co., Ltd.
Shanghai
Liebherr Components (Dalian) Co., Ltd.
Dalian
Liebherr (HKG) Limited
Hongkong SAR
Liebherr LAMC Aviation (Changsha) Co., Ltd.
Changsha (50 %)
Liebherr Machinery (Dalian) Co., Ltd.
Dalian
Liebherr Purchasing (Dalian) Co., Ltd.
Dalian
Liebherr Transportation Systems (China) Co., Ltd.
Pinghu
Xuzhou Liebherr Concrete Machinery Co., Ltd.
Xuzhou

