

LiDAT

The complete vehicle park and fleet management system from Liebherr



GSM



LIEBHERR

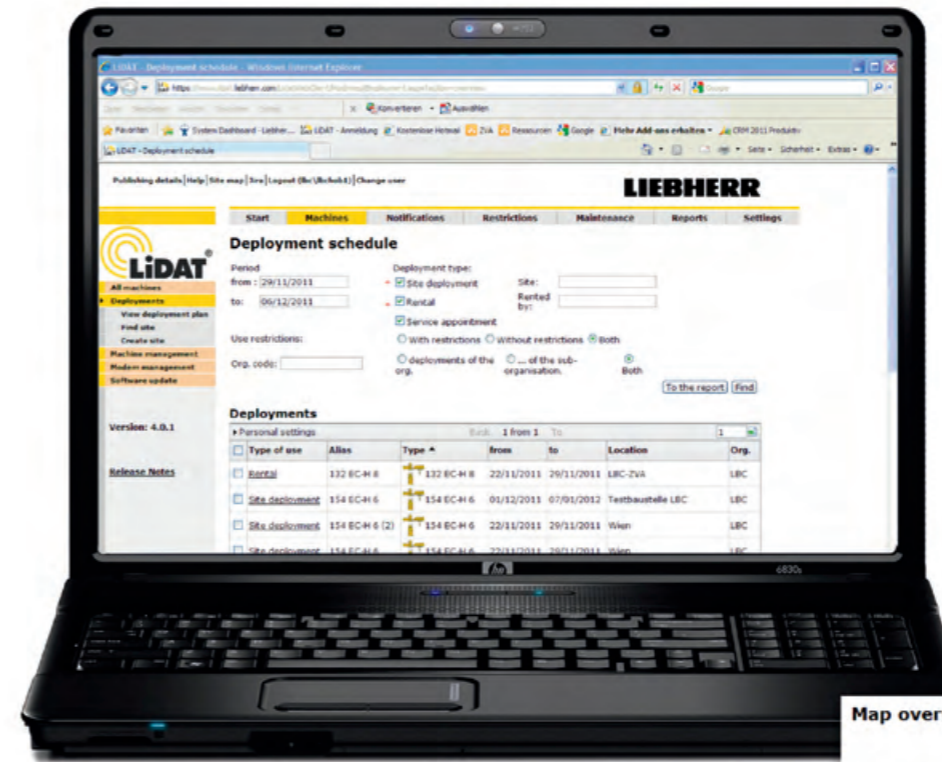
LiDAT keeps you informed about your cranes - any time, all the time

LiDAT is a data transfer and location system for Liebherr cranes and cranes from other manufacturers as well. And you can just as easily manage complete machinery fleets, fleets of cranes, of earthmoving equipment, and maritime machinery as well. Based on the very latest data transfer technology, LiDAT provides information about the location and operation of the machines, and that makes efficient management, optimized planning for commitment, and remote monitoring all easily possible.

With LiDAT, all the important machine data can be accessed at any time. Depending on the subscription status, the data is updated several times a day, and can be called up at any time using a Web browser. And, if required, particularly important information, such as information about specific operating states and operational parameters, can be sent to your E-mail account.

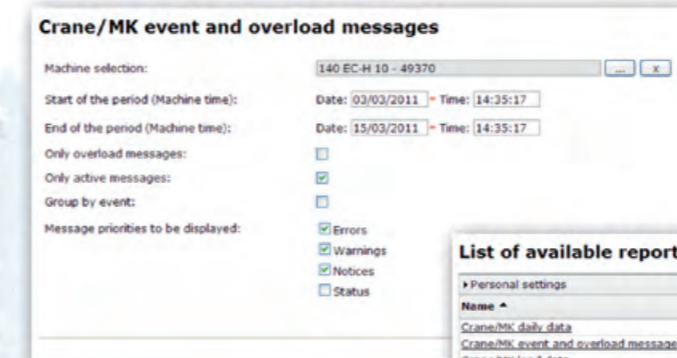


Machine data analysis



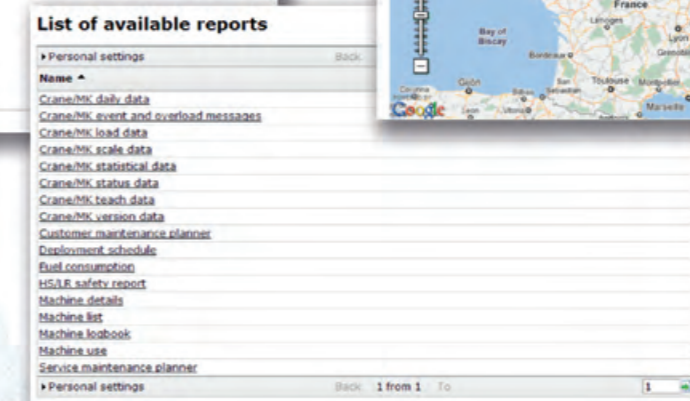
Commitment plan

- Efficient planning of machine commitments and maintenance dates and times
- Faster overview of current operational commitments, with commitment location, place, and time
- Overview of the machines currently available
- Effective working thanks to a number of different filter possibilities



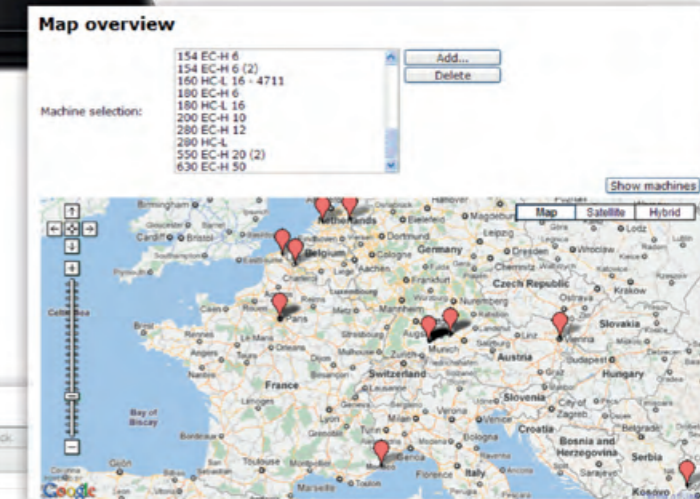
Inputting parameters

- Find information fast thanks to specific parameter input
- Reports can be produced rapidly and easily
- Fast comparison of times, machines, and sites



Report overview

- Overview of all available reports
- Reports specifically tailored to relate to tower cranes
- Automatically generated reports can be taken over and saved in other formats



Card overview

- Overview of the distribution of cranes committed to operations
- Optimization of travel routes of service technicians
- Indication of machines presenting a warning message (red)

LiDAT functions

Vehicle park and fleet management

- Can be used for Liebherr cranes and cranes from other manufacturers as well
- Efficient machine commitment planning and administration
- Site and machine commitment planning with freely-definable working ranges and machine groups
- Analysis of the degree of machine utilization, with records and reports on machine use
- Worldwide location of the machine position
- Database for optimized vehicle park management

Maintenance management

- Automatic reminder of maintenance activities, such as gearbox oil changes or maintenance work on brakes
- Increased availability of cranes thanks to efficient planning of maintenance activities.
- Pre-defined maintenance profiles, especially tailored to the crane type, with reminder function for maintenance activities
- Possibility of creating additional individual maintenance profiles
- Date planning for acceptance procedures, such as expert assessment inspections or appraisals

LiDAT packages and features

LiDAT is available in the basic packages of LiDAT Basic and LiDAT Plus, as well as the forthcoming additional packages for LiDAT Plus. The basic package, LiDAT Basic, was designed for the operation of Liebherr-Fr.tronic cranes, contactor-controlled cranes, and cranes from other manufacturers. LiDAT Plus and the individual additional packages have been developed especially for the extended technical possibilities of Liebherr-Litronic cranes.

Operating parameters	LiDAT Basic	LiDAT Plus
Machine position data	■	■
Operating and utilisation times	■	■
Service interval information	■	■
Machine employment planning	■	■
Machine leasing	■	■
Machine management	■	■
Possibilities of manual data request	■	■
Monitoring of geographical application area		■
Monitoring of operating times		■
Critical operating condition messages		■
Error messages / Alarms		■
Performance characteristic data		■
Data transfer intervals	freely configurable	freely configurable
Number of data transfers	5 times daily	5 times daily

Machine data acquisition

LiDAT provides you with the important data specific to the particular cranes for the series EC-B, EC-H, HC-L, HC, MK, and the very latest fast-erecting cranes as well. You also receive any error or warning messages from your crane. This data is updated automatically and regularly, which means that the most up-to-date information is always available.

You have access to the following crane data:

- Lifting capacity tables
- Load cycles
- Load moment cycles
- Overload messages
- Wind warnings
- Operating hours
- Event messages
- Scaling data
- and much more besides



The LiDAT advantages



Fleet operators/Hirers

- Documentation of operational commitments
- Minimization of downtimes
- Rapid support from the manufacturers
- Optimized economic operation of the machine park
- Complete fleet management all from one source for different types of machine, including equipment from other manufacturers.
- Even better planning reliability: You always know where your machines are, and whether they are being used economically.
- Support thanks to a maintenance management system tailored especially to tower cranes
- Efficient commitment of the cranes for longer lifespan
- Overloads are identified
- Automatically generated reports about degrees of utilization and the operational commitment of the machine park.
- Reports can be called up at any time via the Web portal.
- Flexible interaction of the fleets thanks to grouping arrangements (e.g. site by site)
- Regional boundaries (Geofence) and overview of the operational commitment times
- LiDAT data can be drawn on as the basis for the calculation of hire rates
- Freely-selectable data transfer intervals



Service

- On-line notifications in the event of critical operational states
- Costs reduced thanks to efficient erection engineer commitment and spare parts planning, with direct access to every crane
- Optimization of spare parts dispositions; always the right part on board
- Maintenance planning matched to machine availability
- Support for on-site personnel thanks to on-line diagnosis
- Automated service interval reminders

