

Comprehensive fleet and vehicle management

**LiDAT – Data transmission
and positioning system**

www.liebherr.com

LIEBHERR

Tower cranes and mobile construction cranes



LiDAT®

LiDAT keeps you informed about your cranes



LiDAT is a data transmission and positioning system for Liebherr cranes and those from other manufacturers. Based on the latest data transfer technology, LiDAT supplies information for the localisation and operation of machines, enabling efficient management, remote monitoring and optimised operational planning.

LiDAT provides access to all key machine data whenever it is needed. Data is updated several times a day according to your subscription and can be viewed at any time with a web browser. Particularly important information such as messages about specific states and operating parameters can be sent to your email account as required.



Machine data acquisition

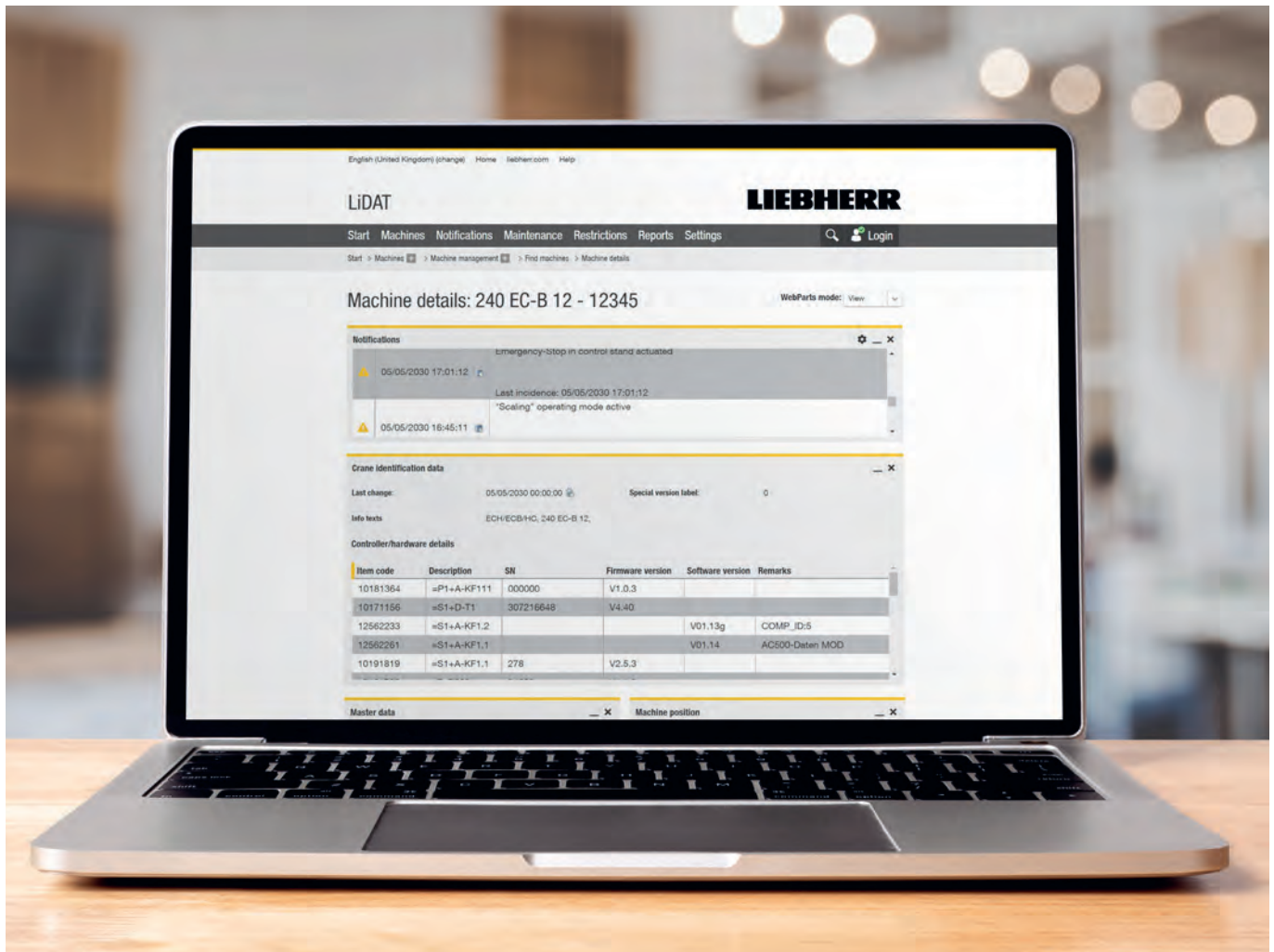
LiDAT provides you with key crane-specific data for the EC-B, EC-H, HC-L, HC and MK series as well the latest fast-erecting cranes. Plus, you receive all error and warning messages from your crane. This data is updated automatically and regularly so that the latest information is always available.



Machine data analysis

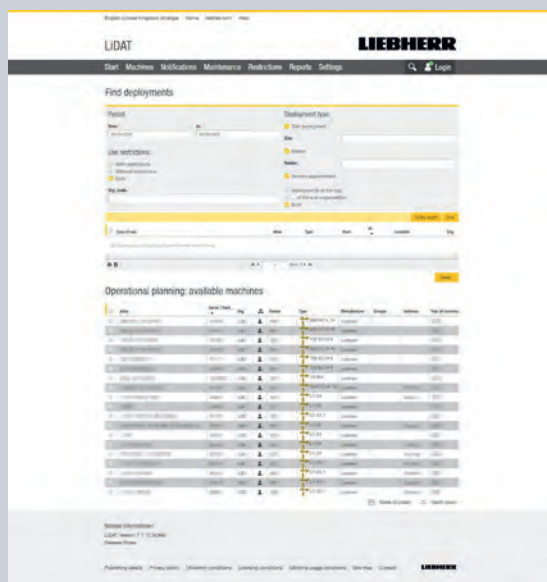
Recorded machine data can be called up quickly and clearly at any time using a web browser. Various report options allow you to access relevant information, such as daily or

weekly performance data. Reports can be downloaded and printed as required.



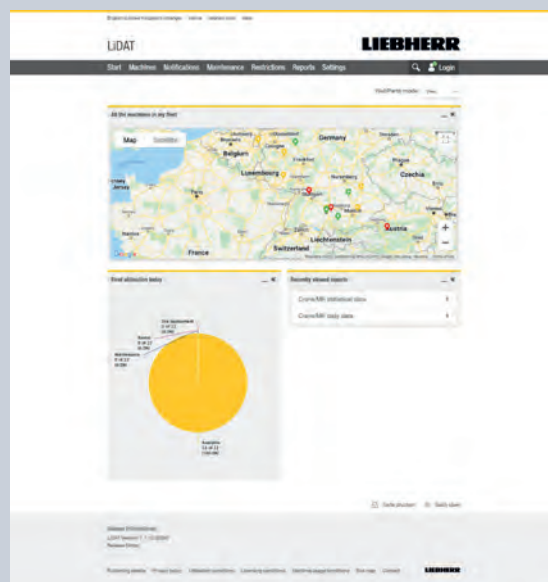
You have access to the following crane data:

- Lifting capacity tables
- Load cycles
- Load moment cycles
- Overload reports
- Wind warnings and wind statistics
- Working hours of individual drives
- Event reports
- Scaling data



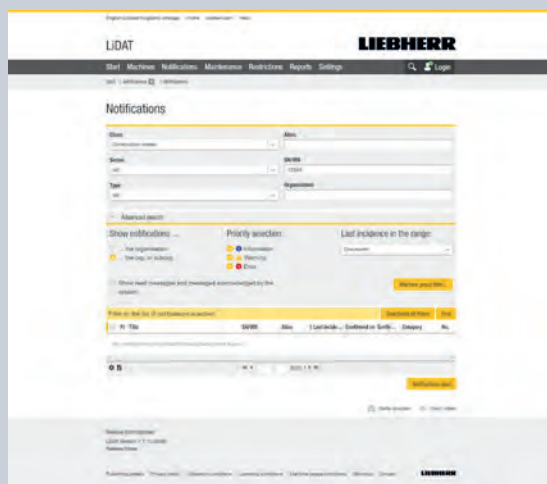
Operational plan

- Efficient planning of operations and scheduled maintenance
- Quick overview of current operations with operation type, location and duration
- Overview of currently available machines
- Effective work through various filter options



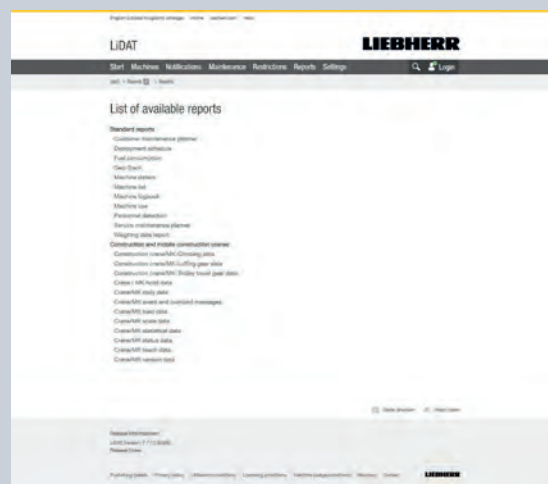
Map overview

- Overview of where cranes are deployed
- Optimisation of travel routes for service technicians
- Indication of machines with warning message displayed (red bubble).



Parameter input

- Fast retrieval of information through targeted parameter input
- Reports can be created quickly and easily
- Quick time, machine and site comparison



Report overview

- Overview of all available reports
- Reports specifically tailored to tower cranes
- Automatically generated reports can be transferred and saved in other formats.

LiDAT functions

Fleet and vehicle management

- Applicable for Liebherr cranes and cranes of other manufacturers
- Efficient machine scheduling and management
- Site and operation planning with freely definable work areas and machine groups
- Analysis of machine utilisation
- Logged machine use
- Overview of crane operations through worldwide localisation of machine positions
- Database for optimised fleet management

Maintenance management

- Automatic reminder of maintenance activities such as gearbox oil changes or brake maintenance work
- Increased crane availability through efficient planning of maintenance activities
- Predefined maintenance profiles specifically tailored to the crane type with reminder function for maintenance activities
- Option to create additional, individual maintenance profiles
- Scheduling of standard inspections and thorough examinations

Licence scope

Machine position data

Hours of operation and use

Service interval information

Deployment planning

Machine rental

Machine management

Manual data request options

Monitoring of relevant geographical area

Monitoring of operating times

Reporting of critical operating states

Error messages / alerts

Performance data

(Depending on crane model and licence)



The advantages of LiDAT

Fleet operators/Hirers

- Documentation of work assignments
- Minimisation of downtime
- Fast support from the manufacturer
- Optimised economic efficiency of machines
- Comprehensive fleet management from a single source for various machine types incl. third-party equipment
- More planning security: You always know where your machine is and how efficiently it is being used
- Support from a maintenance management system specially tailored to tower cranes
- Efficient use of cranes for longer service life
- Overloads are detected
- Automatically generated reports on the utilisation and deployment of machines
- Reports can be accessed at any time via the web portal
- Flexible composition of fleets through groupings (e.g. per construction site)
- Area delimitation (geofence) and overview of deployment times
- LiDAT data can be used as a basis for calculating rental rates
- Freely selectable data transmission intervals

Service

- Online notifications in case of critical operating states
- Cost reduction through efficient fitter deployment and spare parts planning through direct access to every crane
- Optimisation of spare parts planning; the right part on board right away
- Maintenance planning adapted to machine availability
- Support for on-site staff through online diagnosis
- Automated service interval notices



LiDAT®





Liebherr-Werk Biberach GmbH

Memminger Str. 120 • 88400 Biberach an der Riss, Germany
Phone +49 7351 41-0 • info.lbc@liebherr.com • www.liebherr.com

LIEBHERR

This information is provided without liability. Subject to technical modifications.
Printed in Germany by leR • OT • LBC-833-01.26_en