

---

# Conexpo Magazine

---

2026

**LIEBHERR**



# Hands on the future – and what’s behind it

Even in a constantly changing world, Liebherr continues to drive progress with confidence, innovation, and visionary ideas. For over 75 years, the Group has been a trusted partner, working hand in hand with customers and industry peers to find opportunities and create practical solutions. Together, we are shaping the future of the construction site.



Messaging to the point:

- 1. Customer collaboration:** by combining innovative technologies with a growing service network, we ensure not only high-quality products but also the long-term support and expertise our customers need to succeed.
- 2. Digitalization:** we develop future-ready digital solutions optimally tailored to each machine and customer, which improve performance, reliability, and safety across the entire product lifecycle. Automation, intelligent controls, and remote assistance help operators work more efficiently and smoothly.
- 3. Responsibility:** we take a proactive and smart approach to sustainability, designing machines that minimize emissions, conserve resources, and support a circular economy. Our in-house manufacturing capabilities and pragmatism enable us to build solutions for today’s needs and tomorrow’s challenges.
- 4. Product quality:** with high utility value and efficiency at the core, our machines are built for performance and longevity. Our remanufacturing programs reinforce this by extending product life, minimizing downtime, and contributing to more responsible resource use.

At Liebherr, over 50,000 dedicated employees bring passion and inventiveness to every customer and partner interaction, delivering top quality and setting new standards in technology. Across all departments, our teams enjoy the freedom to act and collaborate with cohesion and consistency every day – turning innovation into reality.



**Hands  
on the  
future**

---

# Conexpo 2026 Hands on the future

---

**Dear guests,**

Conexpo 2026 marks another milestone as we continue building the future together. Liebherr's presence reflects our hands-on mentality, proven for over 55 years in North America and more than 75 years globally. Rooted in practical thinking, pioneering spirit, and a commitment to progress, we set new standards in product quality, innovation, and future readiness across industries.

"Hands on the future" is more than a slogan; it is a call to action. At Conexpo, we invite you to discover our innovative products firsthand, engage with the Liebherr brand, and immerse yourself in a future-focused experience. Our success is built hand in hand with our customers and partners. We are proud to serve contractors and public infrastructure builders, delivering reliable service

and customized solutions. Our in-house capabilities across manufacturing, engineering, assembly, distribution, and after-sales ensure top quality, consistency, and greater control at every stage.

At this year's Conexpo, our extensive array of over 30 exhibits from the product segments of earth-moving, mobile and crawler cranes, tower cranes, material handling technology, deep foundation, concrete technology, and components includes live machine demonstrations. We are proud to present safe, user-friendly, emission-optimized equipment and future-ready digital, electric, and autonomous offerings tailored to modern jobsites. Spanning 71,000 ft<sup>2</sup> of exhibition ground across two booths, visitors from many different countries are set to attend. We are passionate



**The active shareholders of the Group** (from left to right):  
Patricia R uf, Sophie Albrecht, Jan Liebherr, St efanie Wohlfarth, Philipp Liebherr, Johanna Platt, Isolde Liebherr, Willi Liebherr

about tackling the needs and challenges of our customers throughout the Americas with forward-looking confidence.

In an ever-evolving world, four key topics, featured in this magazine, propel us to reshape how we deliver value: partnerships, digitalization, responsibility, and product quality. Our job stories show our commitment to partnerships, with one example being deep foundation machines delivering high power and modular adaptability for complex bridge rehabilitation in New Jersey. For digitalization, discover more about our pursuit of smarter solutions like Liebherr Connect that optimizes efficiency and enhances safety.

Under the topic of responsibility, we highlight our initiatives throughout Liebherr in the USA, which drive positive change for our local communities and the world around us. Explore our comprehensive product updates across all product segments in the last chapter.

At the heart of Liebherr's presence at Conexpo is a team of talented and dedicated employees who work together to deliver excellence in service and support to customers across the region. In the spirit of "Hands on the future," we look forward to shaping tomorrow - side by side with you. Experience the excitement of Conexpo 2026.

**Jan Liebherr and St efanie Wohlfarth**  
Presidential committee of the Liebherr-International AG administrative board

# Content

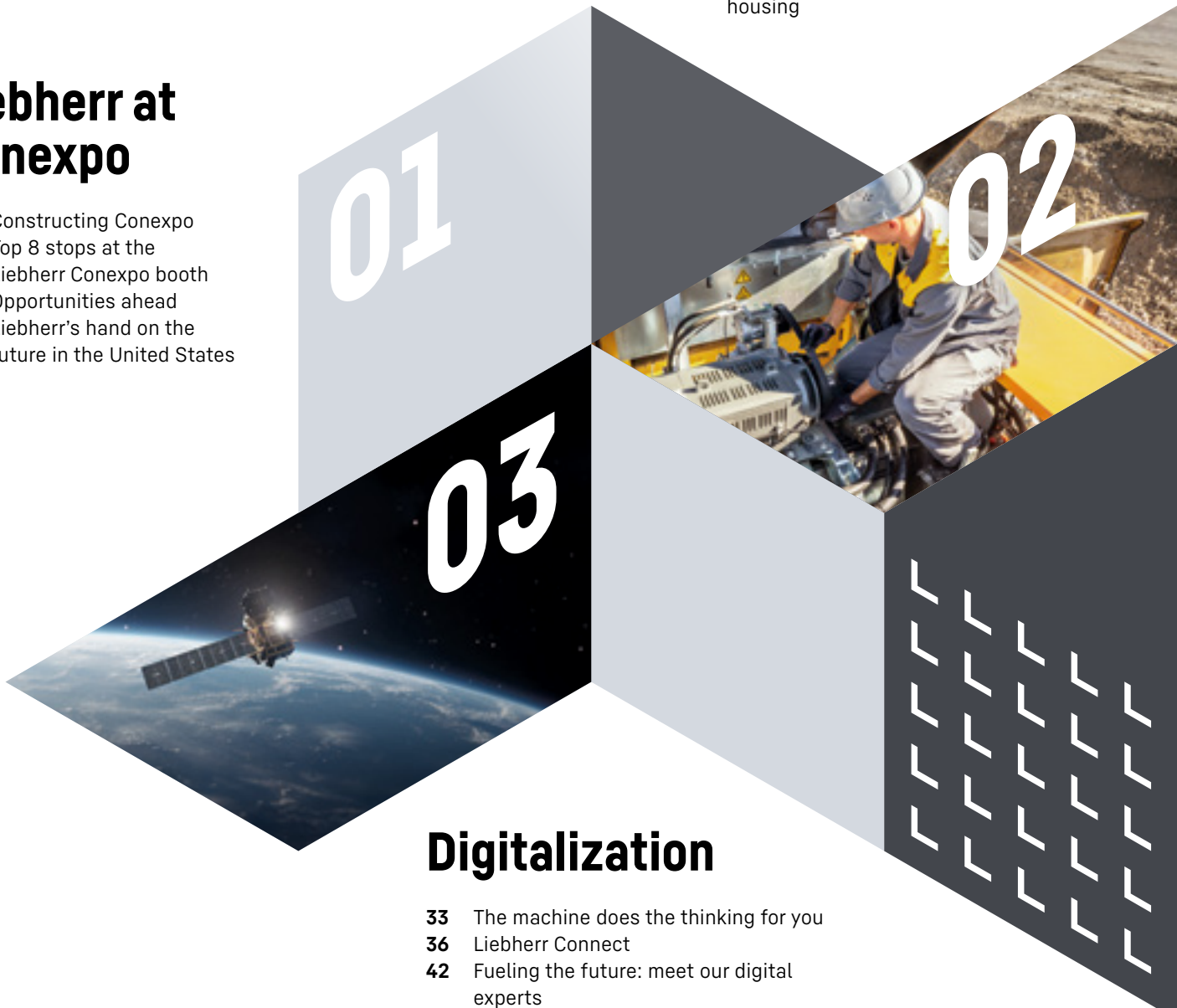
---

## Customer collaboration

- 20 Delivering generations of excellence
- 22 The proof is in the lift
- 24 GUAY Inc. stakes its 60-year reputation on Liebherr reliability for Quebec's renewable energy future
- 26 Driving progress with truck-mounted concrete pumps
- 28 Foundations that stand the test of time
- 30 Lifting communities with affordable housing

## Liebherr at Conexpo

- 08 Constructing Conexpo
- 12 Top 8 stops at the Liebherr Conexpo booth
- 14 Opportunities ahead
- 16 Liebherr's hand on the future in the United States

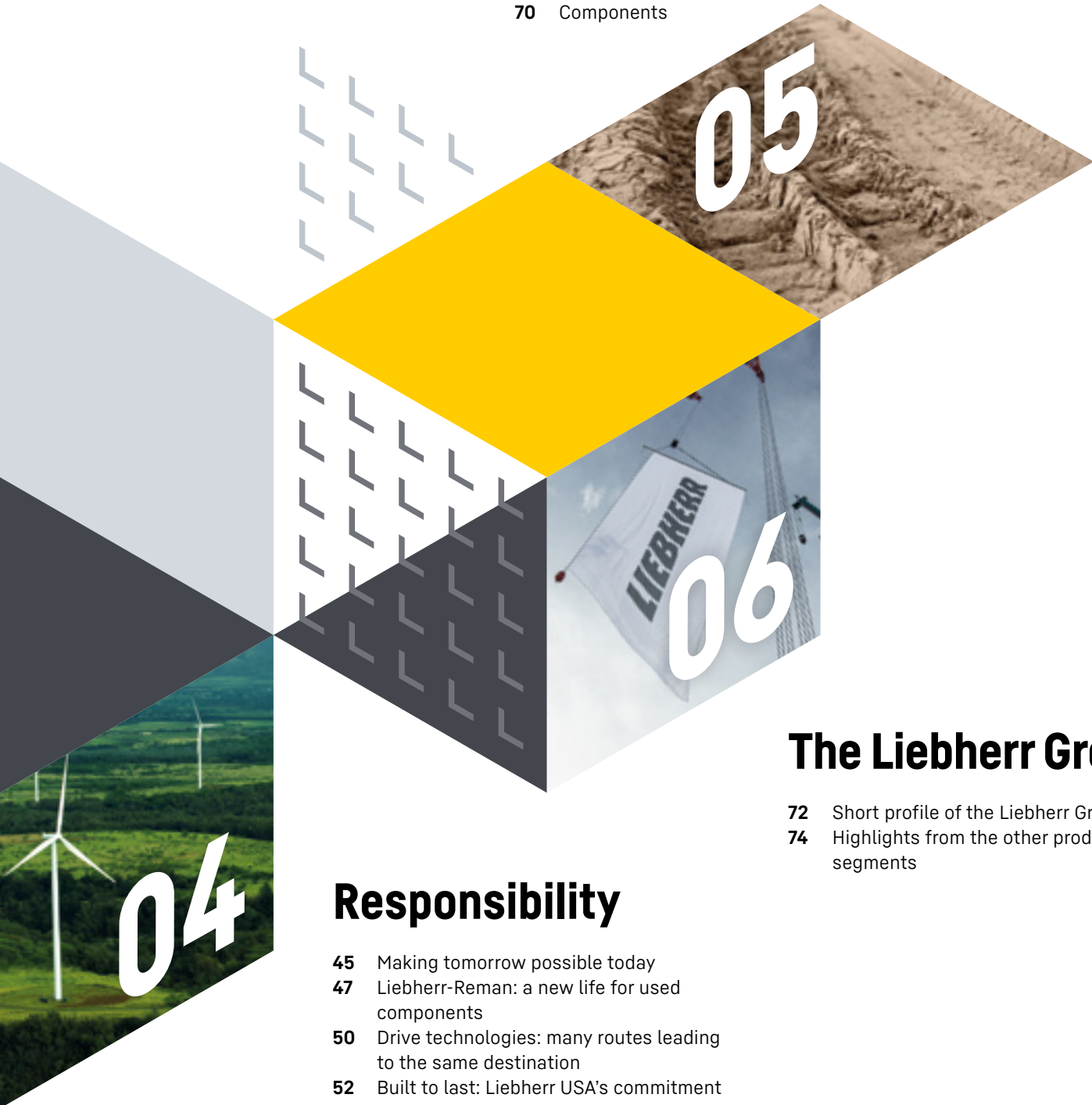


## Digitalization

- 33 The machine does the thinking for you
- 36 Liebherr Connect
- 42 Fueling the future: meet our digital experts

# Product segments

- 55 Earthmoving
- 58 Material handling technology
- 60 Mobile and crawler cranes
- 63 Concrete technology
- 66 Tower cranes
- 68 Deep foundation
- 70 Components



## The Liebherr Group

- 72 Short profile of the Liebherr Group
- 74 Highlights from the other product segments

## Responsibility

- 45 Making tomorrow possible today
- 47 Liebherr-Reman: a new life for used components
- 50 Drive technologies: many routes leading to the same destination
- 52 Built to last: Liebherr USA's commitment to people, planet, and progress





# Constructing Conexpo

Every three years, the entertainment capital of the world, Las Vegas, NV, welcomes visitors from around the globe to experience Conexpo, North America's largest construction exhibition. Hosting over 139,000 attendees, this immense construction exhibition provides hands-on highlights featuring the world's top equipment manufacturers.

The Liebherr booth continues to be a prominent stop at Conexpo. Behind this monumental showcase is the team of dedicated employees who make the Liebherr exhibit come to life – from intricate planning and logistics to on-site execution.



## North America's largest construction exhibition

Founded in the early 20th century, Conexpo was held in a variety of large cities across the country, including Columbus, Detroit, and Chicago, before finding its home in Las Vegas in the 1990s. Liebherr has consistently been one of the largest booths on site spanning over 66,000 ft<sup>2</sup>. It showcases more than 30 exhibits, including earthmoving, mobile and crawler cranes, tower cranes, material handling technology, deep foundation, concrete technology, components, and a wide range of digital innovations.

# It takes a village

Before the booth structures are set, machines are placed, and walls are erected, multiple teams both in the U.S. and abroad work for many months to plan, coordinate, and execute this massive undertaking. From booth design and machine layouts to giveaways and branding, every detail is meticulously decided to provide the best experience possible for all Conexpo attendees.





## Innovations at work

With more than six months of planning underway, Liebherr employees travel to Las Vegas in early January to begin assembling the booth and store the incoming machines.

Four weeks prior to the show, the Liebherr team begins the move-in process. Mimicking a puzzle, the team must place each piece of equipment one by one, accounting for safety, size, placement, and setup. This process is then coordinated with on-site hauling and heavy lifting teams to ensure streamlined coordination. As the team works non-stop for four weeks, they must also account for weather conditions, windstorms, and heavy dust in Las Vegas.

In the final week leading up to the event, over 70 team members are on-site to finalize every detail – from booth branding and Liebherr shop setup to photography and final walkthroughs – ensuring everything is show-ready.



# Top 8 stops at the Liebherr Conexpo booth

---

As one of the largest exhibitors at Conexpo 2026, there is a lot in store at the Liebherr booth that you won't want to miss. Check out this list for the top 8 stops to make the most of your visit:

**1 Enjoy machines in action at the Liebherr demo area:**  
With live demonstration shows happening every day throughout the week, enjoy the chance to see Liebherr machines perform in real time! The demo area takes up over 10,000 ft of our booth and showcases our latest machines.

**2 Stop by the Liebherr shop:**  
Don't pass up the opportunity to rep Liebherr at Conexpo! Stock up on all the merch you need to stand out on your next jobsite. You can also shop anytime, anywhere by visiting our online store at [www.liebherrshopusa.com](http://www.liebherrshopusa.com) and ship your new purchase anywhere in the United States.

**3 Grab a snack and take a seat in the cafeteria:**  
On the first floor of the Liebherr booth building you'll find our cafeteria, where visitors can sit back and relax with the perfect view of the outdoor displays. Snacks and refreshments are available to all guests during the exhibition so be sure to take a break and grab a bite before you take on the rest of what the Liebherr booth has to offer.

**4 Learn how to take the next step in your career at Liebherr's Career Center:**  
Located at the front of the Liebherr outdoor booth by the demo area, human resources representatives are on-site and available to meet with you to share what Liebherr is like as an employer. Liebherr is constantly growing, with over 1,700 employees across our 15 locations in the United States. To learn more about exciting career opportunities, job requirements, and benefits, schedule a meeting with our on-site HR team or visit our website at

[www.liebherr.com/careers](http://www.liebherr.com/careers).

**5 Discover Liebherr's state-of-the-art systems in the Technology Pavillion:**  
The next generation of Liebherr technology is at your fingertips and on display at the center of the outdoor booth. Visitors can use this unique opportunity to take a closer look at the latest Liebherr programs.

Designed to assist customers and make your machine more efficient, these digital solutions can provide support for your fleet's regular maintenance and streamline your project's daily operations.

**6 Get a closer look at Liebherr exhibits:**  
Representing six of Liebherr's product segments, the Liebherr booth has over 30 exhibits on display for attendees to see. Across the 66,000 ft<sup>2</sup> exhibition area, you can find equipment from tower cranes and wheel loaders to drilling rigs, mobile cranes, and more. Get up close and personal with next-level Liebherr engineering.

**7 Find out more about Liebherr deep foundation machines:**  
In addition to the main outdoor booth, you can learn more about deep foundation machines at booth #P7761 in the Platinum lot. Home to several machines from Liebherr's deep foundation product segment including attachments, piling and drilling rigs, as well as a concrete crawler pump. Explore the 5,000 ft<sup>2</sup> booth to get a glimpse into the latest Liebherr technology!

**8 Your guide to getting around – at the Information Booth:**  
Positioned right at the entrance to the Liebherr booth, take advantage of your visit and get all your questions answered. Here to help with whatever you need, the Liebherr Information Booth team can assist you - from finding a specific machine or local Liebherr dealer, to sharing the live demo schedule or guiding you to the Liebherr shop. **Visitors can also find the exclusive Liebherr hat at the booth, so make sure to snag one!**

**[Click here to see our latest updates on everything Liebherr at Conexpo](#)**

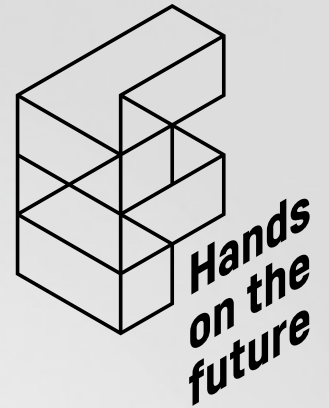
---

# Experience the brand

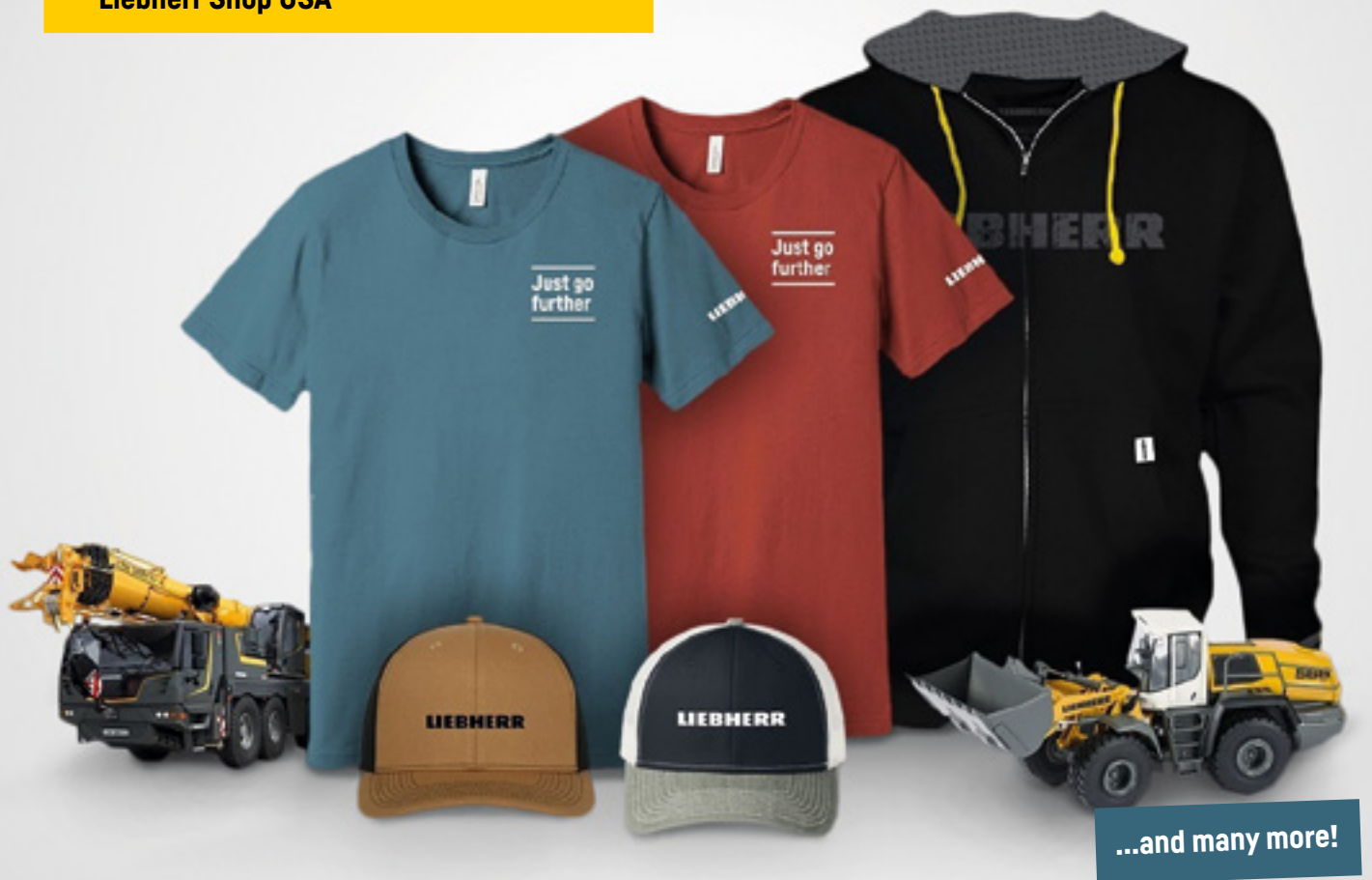
---

[www.liebherrshopusa.com](http://www.liebherrshopusa.com)

## LIEBHERR



Liebherr Shop USA



...and many more!

## Visit the Liebherr shop at Conexpo

Discover our best-selling gear in person, or browse from the comfort of your home online. Liebherr Shop USA has everything from apparel to collectible scale models, plus a wide array of other must-have souvenirs to remember your experience. **We look forward to seeing you!** Find us at booth F35055 at the Las Vegas Festival Grounds.

# Opportunities ahead

Change is inevitable and often challenging to adapt to, but it also unlocks immense potential. Liebherr embraces these changes as an opportunity for innovation, expansion, and future growth.

Offering 12 product segments throughout North America, a one size fits all approach to product defossilization is complex. Through this realization, Liebherr has embraced a technology neutral approach to address a wide spectrum of applications and machinery. Currently, Liebherr offers multiple alternative drive options including HVO, battery-electric machines, hydrogen engines, hybrid drive and autonomous drive systems.

With over 20 years of experience at Liebherr, Kai Friedrich, managing director at Liebherr USA, Co. has found himself actively witnessing these changing environments, but confident in Liebherr's evolving technologies to stay on top of industry trends.

"We notice that market trends are evolving towards more sustainable solutions. Liebherr has been implementing initiatives to introduce and distribute a growing number of emission neutral products across its portfolio of products," noted Friedrich. "With these offerings, Liebherr can provide an increased level in efficiency, economy, and safety for our customers in the USA while still meeting their individual requirements."

Friedrich further noted that it's important to share these new innovative technologies with Liebherr's customer base at Conexpo, so that customers can get hands-on with the current and future technologies.



Kai Friedrich, managing director at Liebherr USA, Co.

## Conexpo offerings

At Conexpo, the Liebherr booth will showcase multiple emission-neutral construction machines and components as well as active assistant systems integrated into Liebherr products such as Bucket Fill Assist, Skyview 360°, and LiDia, an intuitive diagnostic software tool for servicing Liebherr machines. Each of these systems are developed in-house to provide small steps towards autonomous efficiency for operators in both standard and technology-neutral machines.

Additionally, Liebherr will have a D946 engine on-site, representing Liebherr components and the Liebherr Reman Program. This program gives a second life to used components by recovering energy-intensive materials and re-manufacturing them to "same-as-new" quality contributing to the overall circular economy.

Friedrich explained, "We have a clear approach that safety always comes first for all Liebherr products. Providing in-house engineering for both emission-neutral and standard construction machines allows Liebherr to prioritize safety in each step of development while also looking ahead at the market trends. With that in mind, we see a strong trend towards autonomous solutions and have made great progress in this area across multiple Liebherr product segments. As we continue to fully develop these solutions, customers can see increased efficiency, safety, and economical savings."

***“We are actively broadening our service and support network across the USA to support the continued growth of Liebherr.”***

**Kai Friedrich**

Managing director at Liebherr USA, Co.

As the North American market continues to expand and adapt to carbon free solutions, Liebherr is motivated and working towards offering more emission-neutral products in the future.

“We are actively broadening our service and support network across the USA to support the continued growth of Liebherr. That includes the consideration of expanding assembly and manufacturing capabilities in the US – which we have already completed in Newport News, VA,” said Friedrich.

#### **Expansion on the horizon**

A major step in Liebherr’s North American growth is the construction of the new logistics warehouse in Tupelo, MS. This will be the first major distribution center outside of Europe and is designed to enhance Liebherr’s service capabilities across the Americas by providing faster and more efficient services to customers, reinforcing its position as an industry leader.

The new logistics center in Tupelo, MS, will play a significant role in the management and distribution of spare parts and products from Liebherr’s earthmoving, tower cranes, concrete technology, mobile and crawler cranes, maritime cranes, and components business. And the facility will serve as a hub for a wide range of operations, including warehousing, distribution, pre-assembly, kitting, repackaging, and customs and export services for the Americas.

Hirohito Imakoji, managing director at Liebherr USA, Co. explained, “We have seen multiple large-scale investments in the US across the last decade including the Virginia campus expansion and upgrading Liebherr mining’s manufacturing capabilities. The Tupelo campus continues to showcase our increasing capabilities in the US and expands our footprint throughout the Americas.”

#### **Local impacts**

As Liebherr continues to expand its capacity in the US, connecting with the community becomes essential in supporting the company’s long-term efforts.

“The local community is where we get our biggest support, so we find it extremely important to provide outreach and opportunities. As of 2025, we continue to partner with local trade programs, creating a pipeline of talent for young people looking to get into mechanical and service-based careers,” noted Imakoji. “We are also working closely with the local communities to create a support system that benefits both Liebherr and the local supply chain networks, infrastructure needs, and even community programs spearheaded by employee sponsorship requests.”

As Liebherr continues to explore new opportunities throughout North America, the company prides itself on top quality customer service, state-of-the-art innovation, and delivering reliable, high-performance machinery.



Hirohito Imakoji, managing director at Liebherr USA, Co.

# Liebherr's hand on the future in the United States

Pioneering progress since its founding in 1970, Liebherr's presence in the United States has continued to grow through intentional business strategies. Liebherr USA takes pride in the success that has been created and has made multiple significant investments that reflect its strong impact and lasting commitment to the North American market.



## At a glance: the history of Liebherr in the United States

- 1970** **Liebherr-America, Inc. in Newport News, VA**  
Liebherr enters the U.S. market with a product lineup of hydraulic excavators, dozers as well as tower slewing and special purpose cranes; all developed, produced, and manufactured at its Newport News manufacturing facility.
- 1984** **Diversifying the product lineup**  
Throughout the 1980s, Liebherr establishes additional US business units in new locations. These units include maritime cranes, mining equipment, concrete technology, components, and aerospace.
- 1986** **Liebherr Gear and Automation Technology, Inc.**  
Producing gear cutting machines and turn-key automation systems for customers across North America.
- 1989** **Liebherr-Aerospace Saline, Inc.**  
Liebherr's dedicated aftermarket aerospace service center for the Americas is established.
- 1995** **Liebherr Mining Equipment Newport News Co.**  
Liebherr purchases a Kansas truck maker and begins producing mining trucks in Newport News.
- 2005** **Reaching new heights**  
As the demand for new products continues to grow, Liebherr expands the range of cranes available in the US by establishing new business units and opening new Liebherr branches across the United States. Mobile and crawler cranes as well as foundation equipment are added during this era.
- 2016** **Liebherr USA, Co.**  
Liebherr is reorganized and consolidated into a new sales and service company, Liebherr USA, Co., which handles sales and service for 10 of Liebherr's 13 product segments in the US market. These segments include earthmoving, material handling technology, mining, mobile and crawler cranes, concrete technology, tower cranes, deep foundation, maritime cranes, components, and refrigerators and freezers.
- 2024 – 2026** **Construction of Liebherr Logistics USA, Co.**  
In 2024, Liebherr breaks ground on its new state-of-the-art logistics facility based in Tupelo, MS. A \$176 million investment is expected to create 180 new jobs by 2027. The new logistics center will play a significant role in the management and distribution of Liebherr spare parts and products for the Americas.



**15**  
US locations

**5**  
US companies

**1735**  
US employees

### **Nation-wide support**

Over the course of the 55 years that Liebherr has operated in the United States, its footprint has grown to cover the nation with five companies, 15 company-owned locations and a large-scale distribution network throughout the nation. A longstanding commitment to consistency in quality, state-of-the-art technology, and dedicated service has defined Liebherr for decades. Now with over 1,700 employees across five companies in the U.S., Liebherr has the capacity to work closely with businesses providing tailor-made solutions across its 10 US product segments.

Becoming a trusted partner to customers within the US market takes more than providing new machines to expand their fleets. With strategically placed locations and manufacturing facilities, Liebherr USA provides robust support to businesses across the United States, including readily accessible customer service, efficient spare parts distribution, and proactive on-site technical support.

In addition to Liebherr's five main campuses, satellite locations catering to specific product divisions are also spread throughout the nation to better serve businesses and industries based in the region.

### **Manufacturing in the United States**

Since the mid-1990's Liebherr has used its Newport News mining plant to manufacture a range of diesel-electric mining trucks with payloads of up to 400 USt (362,87 t). After undergoing extensive quality control where they are partially assembled, tested, and certified, the trucks are then shipped to mining sites across the globe.

At the center of the work being done at the factory is the dedicated research and development team working around the clock to create state-of-the-art mining systems for the world's largest quarries and mines. As a result of Liebherr's 30 years of mining truck knowledge and expertise, technologies like advanced trolley systems are making an impact on sites to help lower emissions and create more efficient mining operations.

***“Liebherr’s dedication to the U.S. market extends beyond manufacturing as we are deeply committed to supporting local communities and promoting sustainable practices within the construction industry.”***

**Kai Friedrich**  
Managing director, Liebherr USA, Co.

### Investing for continued growth

Serving as one of the largest markets for the Liebherr Group, properly investing in the U.S. is pivotal. The recent expansions made to Liebherr's footprint over the years serves as a testament to its ability to maintain a consistent and strategic business model. As Liebherr's capacity for business grows, so does its ability to provide the highest quality service to customers across the United States. Unveiled in 2020, Liebherr USA, Co. completed its new headquarters in Newport News, VA, located right alongside its preexisting mining truck factory. This new campus greatly expanded services in the United States, housing a central service workshop for three divisions as well as Liebherr USA's largest state-of-the-art warehouse.

In 2024, Liebherr Mining Equipment invested \$72.3 million in a plant expansion dedicated to produce Liebherr's range of diesel electric mining trucks. These large machines are partly assembled, tested, and certified at the Newport News plant. Complete assembly is then carried out at mines all over the world.

"We thank Liebherr, an international leader in mining equipment manufacturing, for its commitment to the Commonwealth of Virginia," said Governor Glenn Youngkin. "Liebherr has recognized that Virginia is strategically located to serve as its global production headquarters for mining trucks and service customers within the United States and across the world. We celebrate the community partnership between Liebherr, the City of Newport News, and the City of Hampton that made this expansion possible."

This expansion is more than just a construction project; it is a cornerstone of Liebherr Mining Equipment's strategic vision, laying a stronger foundation for the many ambitious projects anticipated in the future.



Liebherr is also expanding in the U.S. with a \$176 million new logistics center in Tupelo, MS. This facility will serve American customers and act as a distribution hub for the Americas, becoming one of four Liebherr-Logistics GmbH warehouses globally. The first phase is set to be operational by 2027, aiming to boost distribution efficiency, enhance customer service, and implement advanced logistics systems for North and South America.

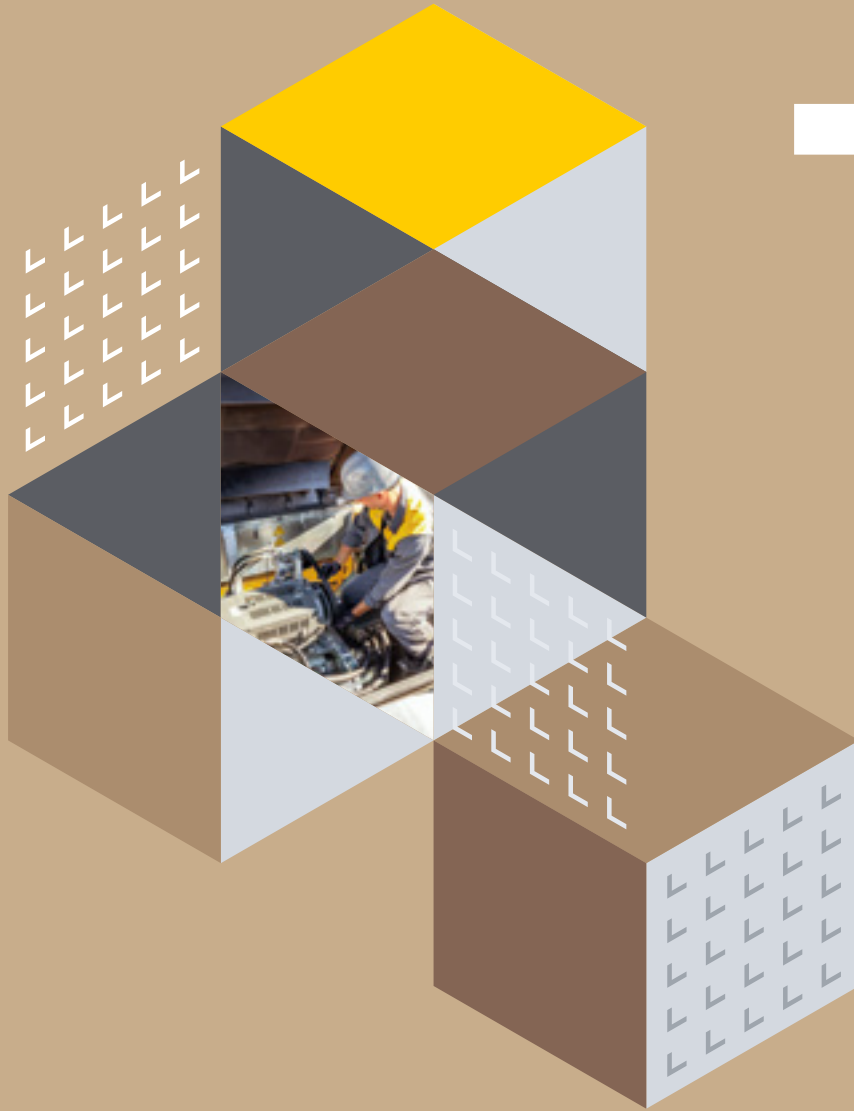
As proven by its previous success, Liebherr's investment in the United States is beneficial for all involved. Providing customers with excellent service and access to products, Liebherr utilizes the strategic location of campuses in the U.S. to further bolster its presence beyond state lines and across the Americas.



---

# 02

---



**Customer collaboration**

# Delivering generations of excellence

---



For more than 130 years, family-owned Landwehr Construction has provided heavy haul and construction services across the greater Midwest. In partnership with Liebherr's earthmoving machines, Landwehr offers safe and reliable demolition solutions tailored to meet the needs of their customers.

As infrastructure continues to age, the need for safe and efficient removal becomes increasingly important. Companies like Landwehr Construction, Inc. specialize in delivering tailored services that address the unique challenges of each project. To tackle increasingly challenging demolition projects, Landwehr expanded its fleet with two Liebherr machines, including the Liebherr R 950 high reach crawler excavator and the Liebherr R 938 straight boom crawler excavator. These machines were deployed and utilized to demolish Farmward Cooperative's grain elevator and three adjacent bins in Sacred Heart, MN.

The project began with the removal of the scale house to allow the salvage of two newer bins, followed by the demolition of three steel grain bins measuring up to 60 ft (18 m) in diameter and 60 ft (18 m) tall. Using their new Liebherr R 950 high reach crawler excavator, the bins and the 95 ft (29 m) tall elevator were taken down in a matter

of hours. This process would have taken days without the Liebherr machine, as Landwehr would have needed to use a crane and boom lifts to physically cut and lower each bin down. Once on the ground, the Liebherr R 938 crawler excavator then sorted scrap steel and demolition materials that were hauled for recycling and removed broken up concrete foundations that were sent for crushing and reuse as base material.

Not only was this Landwehr's second demo project of this scale, but it was their first time using the Liebherr R 950 high reach excavator. The R 950 was the ideal choice for the job due to the site's tight constraints. Positioned just feet from an active railroad and only 35 ft (11 m) from the main line, the machine offered the flexibility and precision needed to navigate the complex job site. Its performance enabled the team to maintain tight coordination and control throughout the project.



“We are really impressed with the Liebherr demolition equipment. We find that the hydraulics on these machines are fast yet smooth, which allows us to do our job more efficiently. Also, the capacity and stability of these machines are amazing,” noted Aaron Wendlandt, estimator/project manager, Demolition at Landwehr Construction, Inc.

### **Generational success**

Founded in 1895, Landwehr Construction remains a fifth-generation, family-run company recognized as a trusted turn-key site contractor. With multiple locations throughout the Midwest and an expansive fleet, the company continues to deliver the same commitment to service that inspired its founding 130 years ago. Landwehr specializes in sitework and utilities, heavy highway, crane and rigging, machinery moving, demolition, environmental remediation, wetland specialty and renewable energy including wind, solar and civil construction.

To acquire their top-of-the-line Liebherr equipment, Landwehr also partnered with American State Equipment, their local earthmoving and material handling technology dealer. As Liebherr’s longest standing US dealer for over 50 years and a multi-generational family business, American State Equipment delivers a full range of machinery and the same trusted, high-quality service throughout the Midwest.

### **Engineered to do more**

On top of ease of use, low cost and high availability, the Landwehr team noted that they purchased these machines due to the capacity, removable counterweights, ease of changing the digging front, and high reach.

With over 60 years of experience designing and producing hydraulic crawler excavators, Liebherr is a leading manufacturer of equipment for special applications, including demolition, tunnels construction, material handling, and many other custom solutions. Each Liebherr crawler excavator is designed with one goal: to meet the demands and specifications of our customers in terms of performance, reliability and efficiency, as well as safety and comfort.

Liebherr’s extensive range of crawler excavators, earthmoving equipment, and material handling machines, can be found in use throughout the United States—thanks to Liebherr USA’s large distribution network that ensures nationwide availability.



# The proof is in the lift

Saying “yes” to the most demanding lifts across the United States, Bay Crane trusts Liebherr’s mobile and crawler cranes to enhance its fleet. With incredible power and precision engineering, these machines enable Bay Crane to deliver high-quality service while meeting tough challenges head-on.

Since its founding in 1939, Bay Crane has grown from a local New York crane outfit into a national leader in the United States. That growth has always depended on pairing the right people with the right equipment – and nowhere is that partnership clearer than in Bay Crane’s long reliance on Liebherr. With over 100 crawler cranes and 161 all-terrain cranes company-wide, Bay Crane counts on Liebherr to transform engineering ambition into a safe, efficient reality.

Bay Crane’s crawler lineup spans heavyweights including the LR 11000 and LR 1750/2 crawler cranes, versatile workhorses such as the LR 1600/2 and LR 1400/2, and nimble models like the LR 1300 SX, LR 1250, LR 1200, LR 1160, and LR 1100 crawler cranes. “This range of machinery means that we can tailor the crane to the project while keeping the operating experience, rigging approach, and service support consistent company wide,” noted Kenneth Bernardo of Bay Crane. “It also means that we can scale from congested urban sites to wind applications and industrial megaprojects without skipping a beat.”

Bay Crane’s confidence in Liebherr’s crawler cranes isn’t theoretical – it comes from real jobs where performance and reliability matter most.

From steel mills to infrastructure sites and industrial projects, Bay Crane consistently puts its fleet of Liebherr cranes to the test, and they continue to deliver. Three recent projects demonstrate why Liebherr crawlers are the backbone of Bay’s heavy-lift fleet.

## Strength in steel

Providing heavy lifting at a local steel mill, Bay Crane utilized the Liebherr LR 11000 crawler crane to take on a new challenge: installing a 584,000 lbs (265 t) door machine assembly inside a dense and confined industrial footprint. The crane was required to pick, swing, rotate, and even travel with the load, all while clearing conveyors, pipe racks, and stacks. It was a masterclass in the advantages of crawler cranes, showcasing the ability to reconfigure counterweights, maintain stability while traveling, and thread massive equipment into tight spaces. The success of this lift highlighted why Liebherr’s engineering and Bay Crane’s field expertise form such a reliable pairing.

Then there are lifts where reach and height are the defining challenge. For a recent duct installation project, Bay Crane deployed the Liebherr LR 1750/2 crawler crane in a heavy configuration with luffing jib. With a 225 ft (69 m) lift radius and full 360-degree swing clearance,



the crane handled a 97,500 lbs (44 t) load at just 57 % of its capacity. This project showcased the LR 1750/2’s ability to work comfortably at extreme radius and height. Even at a distance, the crane had ample margin showcasing Liebherr’s machines combine reach, efficiency, and safety without compromise.

Lastly, Bay Crane handled a 520,000 lbs (236 t) stator component that demanded a combination of lifting and specialized transport. Using gantries and the Liebherr LR 1600/2 crawler crane, the load was carefully lifted and prepared for transport. From there, it traveled by 12-line THP hydraulic platform trailer to the next jobsite, where it was transferred to rail for shipment. For the next stage of this project, Bay utilized the Liebherr LTM 1500-8.1 and LTM 1650-8.1 all-terrain cranes to work in tandem to offload the component before it was again secured on 12-line THP for final delivery to the customer. This exemplifies Bay Crane’s ability to orchestrate multi-modal heavy haul and lifting solutions with Liebherr cranes at the center of every critical handoff.

### Trusted partners

Bay Crane's diverse projects demonstrate the range of challenges that they tackle and why they turn to Liebherr cranes as a trusted solution for getting the job done. Whether it's chart-edge lifts at long radius, ultra-heavy components maneuvered through confined industrial sites, or high-reach installations where efficiency and margin matter, Liebherr cranes have proven they can handle the extremes.

"Our relationship with Liebherr is rooted in shared standards. Their engineering gives us predictable charts and precise handling; our engineers and field teams turn that into productive lifts," said Bernardo. "Over decades, that cycle has built trust. Liebherr continues to refine machines that reflect how contractors actually work, and Bay Crane continues to invest in a fleet that's ready on day one for complex, multi-crane picks, tight urban staging, and long-reach assembly in renewables and heavy industry."

For Bay Crane, that reliability translates into more than just completed lifts – it means confidence for its clients, safer jobsites, and the ability to say "yes" to projects that others might turn away. After more than eight decades of growth, the Bay Crane team notes one thing that has remained constant, "when the job calls for power, reach, and precision, we know that we can count on Liebherr."



# GUAY Inc. stakes its 60-year reputation on Liebherr reliability for Quebec's renewable energy future

---

The cranes lifting Quebec's renewable energy infrastructure into place don't get second chances. Neither do the companies operating them. So when Quebec's most challenging projects need cranes that work in mountain terrain, mile after mile from the nearest service center, they call GUAY. And GUAY calls Liebherr.

Picture this: Five wind farm construction sites scattered across Quebec's mountainous terrain. Turbine components weighing hundreds of tons waiting to be lifted into position. Access roads that barely qualify as roads. Weather windows that open and close without warning. And your crane goes down.

This scenario isn't just stressful, it's expensive. Every day of downtime cascades into penalties, crew idle time and projects that slip further behind schedule. In remote mountain locations, a simple repair can take days when the nearest service center is hours away.



When that's your reality, you need one thing: Equipment that works when you need it, backed by service that shows up when you need it.

That's why GUAY Inc., Canada's largest crane rental company, put their Liebherr fleet at the core of their most ambitious operations, making reliability and after-sales service their top criteria when investing in 38 Liebherr cranes.

### **When the stakes couldn't be higher, Canada's largest crane fleet chose Liebherr**

"Reliability and service after sales," said Guillaume Gagnon, Executive Vice-President of GUAY Inc. "Those were our main criteria when choosing Liebherr. When you're working in remote mountain locations installing wind turbines, you need equipment you can count on."

Gagnon isn't making empty claims. GUAY has been installing and repairing wind turbines for 20 years.

The company's commitment to Liebherr speaks volumes. The lineup represents some of the most advanced lifting technology available today. 38 machines in their fleet, with 14 more on order for 2026. Models ranging from the compact LTC 1050-3.1 for tight access work to the mighty 1,200-ton LTM 11200-9.1 for heavy lifting. Three LR 1700-1.0 crawler cranes (with two more coming), and two LG 1800-1.0 lattice boom cranes on order.

"Every crane in our fleet represents our word to clients," Gagnon said. "When GUAY shows up, the work gets done. Liebherr equipment helps us deliver every time."

### **A legacy of smart decisions**

GUAY's story began in 1964, when entrepreneur Jean-Marc Baronet bought a struggling equipment business and turned it into Machineries Provinciales Inc. The company sold heavy machinery, including cranes, but Baronet noticed that many customers wanted to rent equipment before deciding to buy it.

To meet that need, he started a separate rental company called Armand Guay Inc., named after his brother-in-law. At the time, regulations didn't allow one company to both sell and rent cranes, so the move was smart and strategic. The rental business quickly grew, and by 1988, it became known as GUAY Inc., a name now recognized across North America.

Today, GUAY is made up of 700 employees, 550 cranes and more than 1,200 pieces of equipment, including trucks, trailers and support vehicles. That makes GUAY the largest crane rental company in Canada.

GUAY specializes in both operated and non-operated crane rentals. Whether it's lifting bridge beams, placing concrete panels or installing massive wind turbines, GUAY provides the equipment and experience to get the job done safely and efficiently.

### **As Quebec continues expanding its renewable energy infrastructure, GUAY Inc. is positioning itself at the forefront of that growth**

In an industry where every lift matters, GUAY's success rests on trust. Trust in its people, its expertise and the equipment it runs. Backed by the performance of Liebherr cranes, that trust stands tall across Québec's toughest job sites, proving that true lifting power comes from experience, innovation and reliability.

With its combination of deep project experience, the largest crane fleet in Canada, and a strategic partnership with Liebherr, the company that Jean-Marc Baronet built from a struggling acquisition six decades ago is ready to help power Québec's sustainable energy future.

If you're managing construction projects, specifying equipment or making procurement decisions, consider what GUAY's choice tells you. The company with Canada's largest crane fleet, 60 years of operational experience, and two decades of wind turbine expertise chose Liebherr. Not for two or three units. For 38 and counting.



# Driving progress with truck-mounted concrete pumps

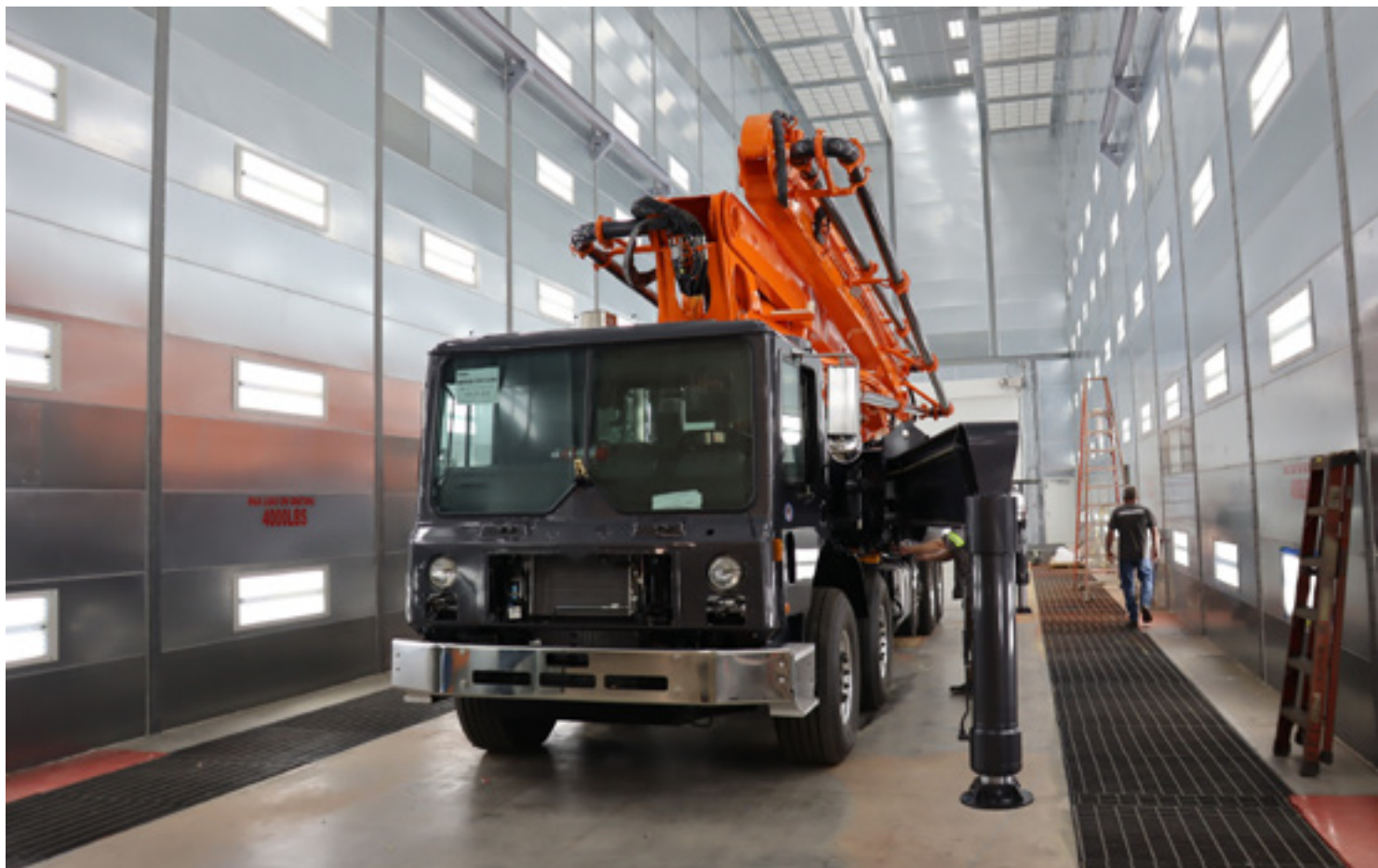
Renowned for its commitment to reliable customer service, high safety standards, and trusted partnership, the concrete technology product segment continues to expand its presence in the US and make significant investments nationwide.

Concrete technology is one of ten product segments operating across the United States. Located at Liebherr's Newport News campus, the concrete technology team benefits from on-site resources that include a dedicated workshop, a modern training center, and a spacious warehouse designed for storing spare parts.

This state-of-the-art facility is where Liebherr pumps are expertly integrated with North American chassis, ensuring each unit is precisely fitted to meet the specific requirements of individual customers.

Demonstrating further commitment in quality and customization, a notable

investment was made in 2024 by allocating \$7 million to the construction of a specialized on-site paint booth. This new booth is the largest on the east coast and allows each Liebherr pump model to be custom painted according to customer preferences, further tailoring each product to fit unique customer branding.



### Guaranteed service

Efficient concrete pump operation is crucial for customers' productivity and success. That's why Liebherr provides on-site service technicians and genuine parts, ensuring pumps operate reliably with minimal downtime, so customers can focus on meeting project deadlines. A large inventory of spare parts is readily available for immediate shipment from the Newport News warehouse, ensuring fast delivery and minimal downtime for customers. This comprehensive support structure helps keep operations running smoothly and expands the lifespan of equipment.

For customers seeking a more personalized experience, hands-on equipment demonstrations are available across the USA, along with both on-site and online training for entire teams. Each visit or training can be customized based on individual needs.

### Equipped for everyday needs

Liebherr offers multiple truck-mounted concrete pump variations in North America. The pumps are compact and travel easily on standard roads allowing for quick transportation, set up, and placing concrete. The pumps are also equipped with multi-section booms in Z-fold and M-fold configurations, providing flexible configurations and reach to navigate over tall structures or span wide distances.

Equipped with Liebherr's XXT outrigger support system, the trucks are engineered to maintain stability even in confined, congested, or urban jobsites where both personnel and machinery are constantly moving.

Additionally, all pumping requirements are built standard into the machine including the boom, hopper, controls, and storage space for hoses and tools. The design and kinematics of the boom ensure low oscillation while pumping, and the shape of the charging hopper allows for a smooth flow of concrete and exceptionally good material cylinder fill performance.



Liebherr's latest truck-mounted concrete pumps also offer advanced technological features, including powerbloc, XXA stability assistance system, and a half-closed circuit (HCC). Developed and manufactured in Germany, these systems make the pump more efficient, allow for more stability support options, and guarantee all drives are permanently supplied with reliable hydraulic power. Each of these further aids in a higher service life and less downtime on site.

### "The Profit Maker"

To further commitment to quality, safety, and perseverance within the North America market, Liebherr USA, Co.'s concrete technology team has created a new, enhanced warranty program: "The Profit Maker." This innovative advantage is designed to help customers maximize their profitability through the advanced truck-mounted concrete boom pumps.

The "Profit Maker" provides significant benefits for customers, including a comprehensive four-year warranty that covers the entire machine. During the warranty period, owners are not liable for any service expenses or the cost of spare parts, offering complete peace of mind and predictable running costs. Additionally, the boom pumps come with a

structural guarantee, ensuring long-term reliability and durability for demanding construction environments.

Items included in the enhanced "Profit Maker" warranty include:

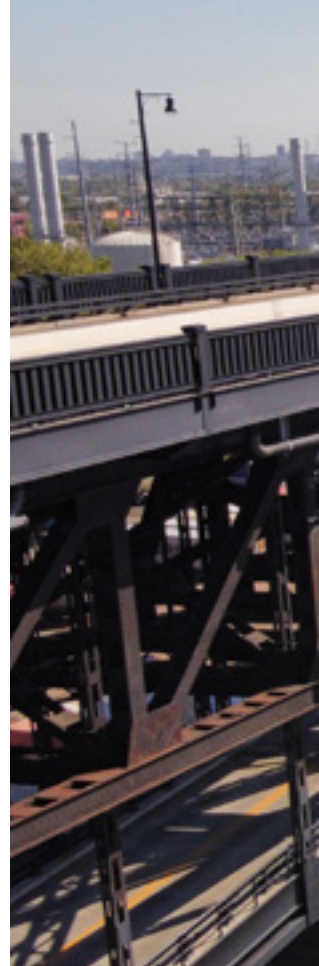
- Wear parts in the hopper (subject to normal wear)
- Sensors and other wear parts on the pump (subject to normal wear)
- Hydraulic filters and hoses
- Structural warranty

Liebherr USA, Co. offers spare parts and service for concrete technology nationwide, providing expert support and fast delivery to minimize downtime and keep your operations running smoothly across the country.

[Click here for more information](#)

# Foundations that stand the test of time

With over 70 deep piles to drill at the bustling Pulaski Skyway Bridge in New Jersey, 3C Drilling, LLC turns to Liebherr deep foundation machines to deliver proven, time-tested solutions for their large-scale project. The machines high performance, ease of use, and adaptability to diverse soil conditions makes Liebherr a trusted partner to address complex foundation systems.



Founded in 2002 as a small cell tower drilling company, 3C Drilling, LLC has grown into an industry leader in drilling and foundation installation, possessing decades of combined industry knowledge. The women owned company specializes in caissons, drilling, micropiles, helical piles, mini piles.

With over 20 years of experience, 3C Drilling has multiple Liebherr deep foundation machines and purchased an additional Liebherr LB 45 drilling rig to assist with a large foundation project at the Pulaski bridge in Kearny, NJ.

“We chose Liebherr LB 45 because it delivered the most power possible with the smallest footprint, which was exactly what we needed for this project,” said Alexandra Cook, COO of 3C Drilling, LLC.

Handling approximately 67,000 crossings a day, the Pulaski Skyway Bridge spans 3.5 miles across the Passaic and Hackensack rivers connecting Newark, NJ to Jersey City, NJ. One of the major challenges with this project is the need to install deep piles with a limited height restriction in place so work can be completed under the bridge which remains in use. 3C is actively running two crews to assist with schedule acceleration, however, they are expected to be on site for 1 - 2 years.

3C Drilling is operating a combination of Liebherr drilling rigs, including the modular design of the leader on both the Liebherr LB 45 and LB 30 to install the shafts at various heights. When the project first began, the LB 45 was used with 26 ft (8m) folding leader configuration, but as the



project demands shifted, the machine was converted to “low head” utilizing the same leader in a different configuration with only a change of crowd ropes required. With the change the LB 45 can be used to install pile sections of the bridge and remain under the height requirement

The LB 30 drilling rig utilizes the modular leader design; it is also set up in low head configuration to access drilling needs under lower height requirements than the LB 45 can reach. Additionally, 3C Drilling has the option to install their ultra low head leader for the LB 30 to achieve even more of a reduction in machine height. The current configuration paired with a new Kelly bar allows the 3C team to reach a deep drilling depth, using a conventional drill rig while remaining under height requirements in place.

Ultimately, 3C Drilling is installing 75 drilled shafts and 1 sacrificial demonstration shaft for the rehabilitation of 5ea bridge piers along the Pulaski Skyway. The drilled shafts are 60" in diameter with 54" rock sockets, and the foundations varying depths range from 130" to 150".

Liebherr not only delivers high-quality machines and exceptional customer service in New Jersey but also has established a strong national footprint – supporting companies and contractors across the nation with deep foundation solutions for any terrain.

As a turnkey supplier in deep foundations, Liebherr offers cutting-edge piling and drilling equipment as well as attachments such as vibrators, hammers or slurry wall cutters. Liebherr deep foundation machines are ideally suited for the construction of cast-in-place piles and slurry walls, for the installation of sheet piles or for soil improvement. Since 2019, Liebherr offers unplugged, emission-free machines to assist with a significant reduction in noise and pollution on modern day construction sites throughout the United States.



# Lifting communities with affordable housing

---

To meet the demands of affordable housing construction, MRA Equipment Rental LLC is leveraging Liebherr's self-erecting tower cranes to streamline modular construction sites throughout Miami, including Princeton Gateways I. These advanced cranes enable rapid deployment and offer easy maneuverability, making them an ideal choice for the urban construction site.

Renowned for its tropical climate, vibrant culture, and diverse community, Miami is a highly sought after city for those looking to establish their roots. Despite the many advantages of this modern city, a major challenge remains – there is a significant shortage of housing options for tens of thousands of residents within certain income brackets.

As the housing deficit continues to grow, companies are seeking initiatives to provide high-quality, affordable housing sites for the South Florida region. Chilean-based company VAIN has partnered with the well-established Alta Developers to create a vertically integrated construction solution, maximizing efficiency to deliver high-quality, affordable housing units at the most competitive prices on the market with Liebherr tower cranes.

“After 25 years in business, our company was well established and ready for a significant upgrade to our entire fleet of self-erecting cranes. After compiling extensive global research, we attended Bauma and chose to move forward with Liebherr tower cranes. We appreciate that Liebherr is also a family-run company that offers a global service network and high-quality products,” said Ernesto Valle, owner of VAIN. “We bought our first ten Liebherr self-erecting cranes for projects based in Chile, and later progressed operations into Peru, Brazil, and Panama. Now, we are very excited to begin our first job with the fast-erectors in the United States.”

Through this joint venture, MRA Equipment Rental LLC was established to exclusively manage the rental of heavy equipment for all in-house developments, beginning with their inaugural US-based project: Princeton Gateways I in Miami, Florida. Scheduled to break ground in August 2025, the development will be fully completed in February 2027. Located in Princeton, a small city in the southern part of Miami-Dade County, MRA Equipment Rental utilizes the Liebherr 125 K crane and 81 K.1 crane self-erecting tower

cranes to create the eight-building, 500-unit development at Princeton Gateways I.

Both the 125 K and 81 K.1 cranes are being utilized to lift pre-assembled formwork, rebar, and concrete. The cranes were designed to operate simultaneously as part of a carefully planned daily cycle, allowing the construction of two apartments per day. This makes it crucial for Liebherr tower cranes to operate efficiently to meet these daily scheduling demands.

“It’s always been a part of our objectives and challenges to look for efficiencies in both costs and time when developing a new job. This effort and our work with Liebherr are in line with that objective and the goal of delivering great homes for future families,” said Ignacio Montes, president of Alta Developers.

By taking a much more industrial approach to developing a residential community, Montes noted that they are looking for more continuity, remaining efficient in cost, and hoping to create a new production line for Alta Developers in future.

## Extraordinary and effective

MRA Equipment Rental noted that Liebherr's self-erecting cranes are extraordinary machines that offer the capabilities of a tower crane with the flexibility of a mobile crane. Both fast assembly and disassembly make it quicker and more cost-effective to mobilize and relocate the cranes around the Miami site.

“We chose Liebherr because of the strong and well-established commercial relationship we’ve built over the years. We are highly satisfied with the performance and reliability of their machinery, which has consistently met our operational needs,” said Sebastiao Salvador, representative of MRA Equipment Rental. “Our fleet currently includes more than 20 Liebherr cranes operating across Latin America and



North America, which speaks to our trust in Liebherr's equipment and ongoing support.”

MRA Equipment Rental specializes in providing construction equipment, such as cranes, backhoes, and other heavy machinery, exclusively to their in-house General Contractor, Affordable Housing Factory. Their core business includes not only equipment rentals but also lifting and rigging services tailored to the individual needs of their affordable housing construction developments.

#### **Exceptional flexibility**

Liebherr offers a wide variety of self-erecting tower cranes suitable for use across multiple applications. The benefits of self-erecting cranes include rapid setup and versatility across project sites, making them ideal for building multi-occupancy houses in urban areas, which provides an optimal solution for MRA Equipment Rental and Affordable Housing Factory's initiative. Self-erecting cranes are also transported on the road as complete units. Due to their short wheelbase and compact slewing platform design, they can be maneuvered easily between tight construction sites within Miami.

“The Liebherr cranes are the heart of the jobsite, moving all the materials required on site. Using a self-erecting crane is also vital for such a large project because we can take them down in half a day and reposition them the same day somewhere else on location,” said Valle.

The self-erecting K cranes also offer exceptional flexibility for MRA Equipment to adapt to different construction site requirements. The variable hook heights and precise jib positioning enable optimal placement in tight spaces, so operators can get the K cranes in position safely and efficiently as the modular construction continues throughout the South Florida jobsite.

The MRA team also noted that the Liebherr self-erecting tower cranes are exceptionally easy and safe for their operators to use. Equipped with a handheld remote control, joysticks allow the operator to lift, move, and place materials as needed on the busy site.

#### **Versatile solution**

The K cranes have established themselves as a versatile solution for a diverse range of heavy lifting tasks. Equipped with updated cabs, modern drives, radio controls, and intelligent assistance systems, the cranes in Liebherr's self-erecting K series are based on a time-tested design that allows for quick assembly.

“Liebherr's excellent service staff and engineers consistently support our ongoing needs. They closely work with us to find the most effective solutions in the shortest time possible, keeping us within schedule to continue to expand our operations and provide affordable housing developments,” said Valle.

---

# 03

---



**Digitalization**



**Marcel Flir**  
Head of digital business and strategy at the Liebherr Group

# The machine does the thinking for you

---

The construction machinery industry is presented with valuable opportunities in the world of digitalization. Digitalization opens new paths to increase efficiency, safety, and sustainability on construction sites worldwide, for example by networking and standardizing data formats. Liebherr is actively shaping this transformation and developing digital solutions that are tailored to the individual needs of our local customers and users.

Traditional work methods are increasingly reaching their limits on today's construction sites. Rising efficiency demands, a shortage of skilled labor, and strict environmental regulations are driving the need for innovative solutions. "Digitalization is changing the way the construction industry works – from project planning to machine deployment and maintenance," said Marcel Flir, head of digital business and strategy at the Liebherr Group. "Our aim is to shape this transformation together with our customers and create solutions that sustainably increase their efficiency and competitiveness."

Despite the obvious advantages, there are still many reservations about digitalization in the industry. Companies often fear the high investment costs associated with implementing digital technologies. In addition, the introduction of new systems usually requires training and customization, which can be perceived as time- and resource- intensive. There are also concerns about the protection of sensitive company data and the risk of cyberattacks, both of which can hinder the implementation of comprehensive digitalization.

#### **Minimum effort – maximum results**

Stephen Albrecht, member of the board of directors of the Liebherr Group, relies on the confidence-building case studies from Liebherr companies around the world. "It is crucial to see digitalization not as added complexity, but as an opportunity to simplify and increase efficiency. With our solutions, we enable customers to achieve maximum results with minimum effort."

The focus is on identifying and utilizing synergies between Liebherr's various digital solutions, which extend across all 12 North American product segments and all areas of the customer journey. This includes operational planning, maintenance management, digital inventory



**Stephen Albrecht**  
Member of the board of directors of the Liebherr Group

management, smart home integration, and organizational matters.

Liebherr attaches great importance to modular and scalable digital offerings that enable customers to invest gradually and clearly understand the return on investment. For Marcel Flir, the user-friendliness of systems and tools as well as a precisely tailored training program is equally important for acceptance. Intuitive systems, according to the digital expert, significantly reduced the training costs during the transition. "To guarantee data security, data governance, and cybersecurity at all times, we implement security protocols in Liebherr's digital products and services that

exceed the standards. These ensure the protection of sensitive data and significantly strengthen trust in digital solutions."

#### **From ego system to ecosystem**

Overall, Liebherr is pursuing an integrative approach with its digital strategy that goes beyond the technological excellence of individual machines. "Customers, manufacturers, associations, and solutions providers are all in the same boat when it comes to adding value and achieving the decarbonization targets that are now needed. To achieve this, we are bringing a real paradigm shift into play – away from the ego system and towards the ecosystem," noted Flir.



Advanced data collection and analysis would optimize processes and conserve resources.

A milestone in the digitalization strategy is “Liebherr Connect”. This state-of-the-art connectivity solution networks people, machines, and the environment.

Due to intelligent machine networking, Liebherr Connect provides access to comprehensive machine and process data. Liebherr Connect also supports the development of autonomous machine solutions. The connectivity solution is already integrated into various Liebherr machines and can also be retrofitted into existing device generations. It allows for secure networking of the machine via cloud applications in the digital world and is available in almost all of the Group’s product segments.

“With Liebherr Connect, we create the basis for a future-proof, networked construction site,” explained Flir. “The ability to analyze data in real time and make decisions based on it is fundamentally changing the way machines are used.”

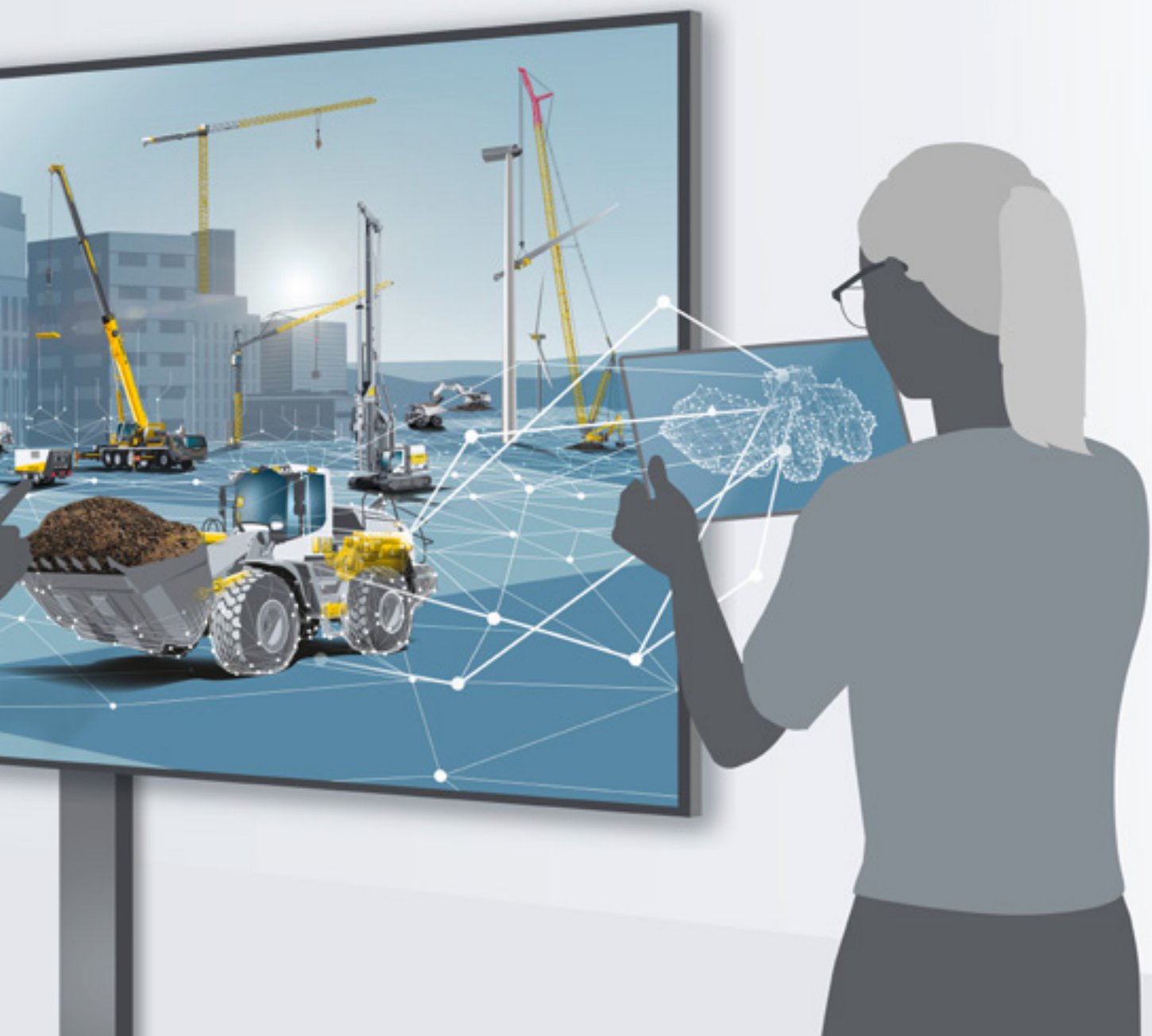
Leading up to Conexpo 2026, Stephen Albrecht is optimistic regarding the future of digitalization. “Liebherr proves that digital solutions are not only efficient and secure, but can also be customized. In this way, we are actively shaping the future of the construction site and creating solutions that offer sustainable added value for our customers. In these transformative times, we are still a long way from reaching our goal. But we are on a very, very good path.”



---

# Liebherr Connect

---





## Q&As

### What is Liebherr Connect?

Liebherr Connect stands for intelligent machine networking. It allows for the real-time exchange of data and is therefore the basis for optimizing operating processes and costs.

### What advantages does intelligent machine-networking offer Liebherr customers?

- **Increased efficiency:** data helps to optimize the operating status and identify bottlenecks at an early stage.
- **Reduced costs:** precise analyses improve the planning of maintenance intervals and reduce downtimes.
- **Sustainability:** intelligent fleet management reduces CO<sub>2</sub> and noise emissions and minimizes the ecological footprint.

### Can connectivity solutions be retrofitted to older Liebherr machines?

The connectivity solutions are already integrated in various Liebherr machines and can also be retrofitted accordingly for generations of devices already on the market.

### How do Liebherr's various network systems work?

Thanks to a wide range of connectivity solutions, machines are connected to digital solutions that are made available via the MyLiebherr customer portal or in the App Stores.

### Why is Liebherr Connect important for the future?

Liebherr Connect is the basis for new technologies such as autonomous operation, AI-supported maintenance and networked machine operations.

# Networked into the future



Liebherr Connect connects people, Liebherr products, and their environment into a high-performance system. The result – future viability, time and cost savings, safe and convenient operation, and efficient machine management.

Early morning at the construction site begins as usual – and yet everything is different. Before the work starts, the team checks the construction machinery fleet specs on the tablet: fuel level, battery status, maintenance instructions, and upcoming tasks. All with just a few taps on the display, the equipment is ready. They are ready to go. In some cases, the operator no longer even has to get into the cab. Due to intelligent networking, the Liebherr machine can be conveniently and safely controlled from a distance. What may sound like science fiction is already a reality on some construction sites today. This is made possible by Liebherr Connect.

## **A new level of construction site management**


“Construction sites are complex ecosystems with numerous machines and equipment from different generations and with different drive concepts. On top of these factors are tight schedules, high-cost pressure, and increasing efficiency requirements,” said Marcel Flir, head of digital business and strategy at the Liebherr Group. “The solution: intelligent, location-independent networking. Whether it's in the city or in remote areas, when every minute counts, data

on machine conditions, operating times and maintenance requirements is crucial for minimizing downtime and increasing productivity.”

In addition, automation is playing an increasingly important role. “The connection to digital solutions will enable more processes to be remotely controlled or even carried out autonomously in the future using new technologies such as AI pattern recognition.”

“Digital transformation has long been a reality and a decisive success factor,” said Flir. And that's exactly what Liebherr Connect is about, “Optimal networking with digital services and analysis tools.”

With Liebherr Connect, Liebherr machines can be networked with a wide range of digital solutions and services that are provided via the MyLiebherr customer portal or in the app stores. This gives machine owners and their teams simple, secure, and reliable access to comprehensive machine data at all times. “This raises the productivity of a construction site to a new level,” said Flir. But the connectivity solutions can do much more than “just” network the construction site, they also put the cost-effectiveness of machines and machine fleets on a new footing.

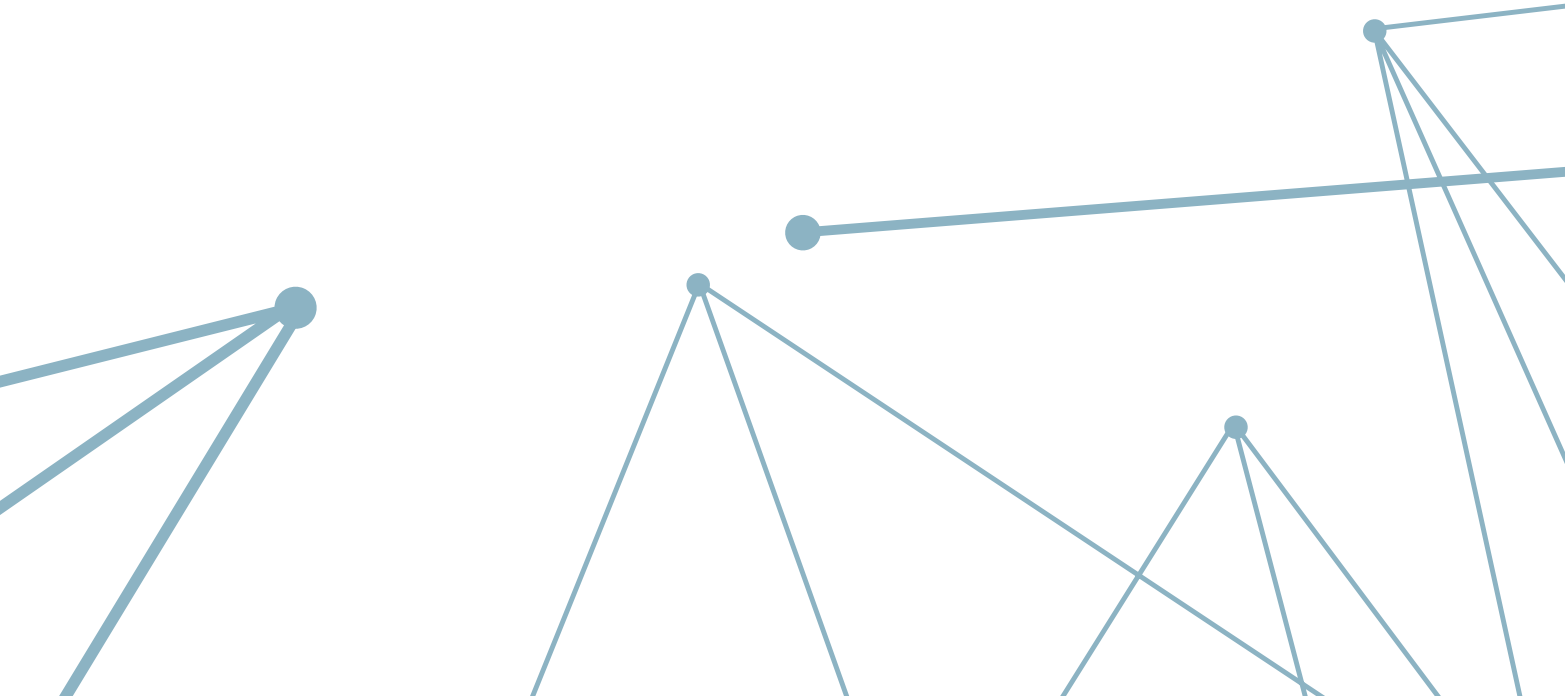




### **Broadly scalable connectivity solutions**

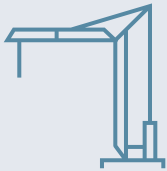
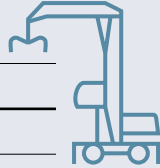
The technological connectivity solutions behind Liebherr Connect were developed together with cybersecurity specialists, design engineers, and service experts from across the Group. This ensures that both Liebherr's B2B and B2C customers benefit optimally from the advantages of intelligent networking.

Right from the start, Liebherr focused on an open architecture that is compatible with common fleet and asset management systems. "Our connectivity solutions allow seamless integration into existing fleets – from individual machines to large fleets," Flir continued. Operators of a wide range of machines benefit from this, including construction machines, mining equipment, tower cranes, and mobile and crawler cranes.

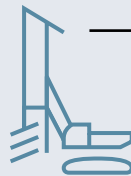
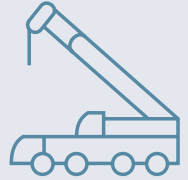


# Liebherr Connect-enabled exhibits at Conexpo 2026\*

Product segment	Product
Earthmoving	R 945
	L 546
	A 924
	TA 230
Material handling technology	LH 40 M Industry
	LH 60 EM (Electric)
Tower cranes	91 K



Product segment	Product
Mobile and crawler cranes	LTM 1055-3.3
	LTM 1090-4.3
	LTM 1100-5.3
	LTM 1300-6.4
	LTM 1400-6.1
	LRT 1130-2.1
	LTR 1150
	LR 1400.1 SX Derrick
	LR 1700-1.0
	MK 140-5.1
Deep foundation	HS 8100.2
	LB 35.1
	LRB 19



\*The right connectivity solution can also be retrofitted to many types of devices. Contact your local service partner directly to find out more.

# Fueling the future: meet our digital experts

---

In a world defined by rapid change and evolving technology, Liebherr provides seamless support through multiple digital platforms including MyLiebherr, a fully integrated customer portal. In the U.S., Isaac Zayas and Trina Baughman provide essential collaboration throughout all Liebherr digital platforms, directly engaging with customers to offer hands-on guidance and expert assistance.

Liebherr USA, Co. supports the integration of digital tools for ten different product segments. Zayas and Baughman directly assist two of these segments, each with their own set of unique needs and requirements.

Supporting the earthmoving and material handling technology segment is digital solutions specialist Isaac Zayas. With over five years of experience in his current role, he was drawn to Liebherr's potential for technological growth.

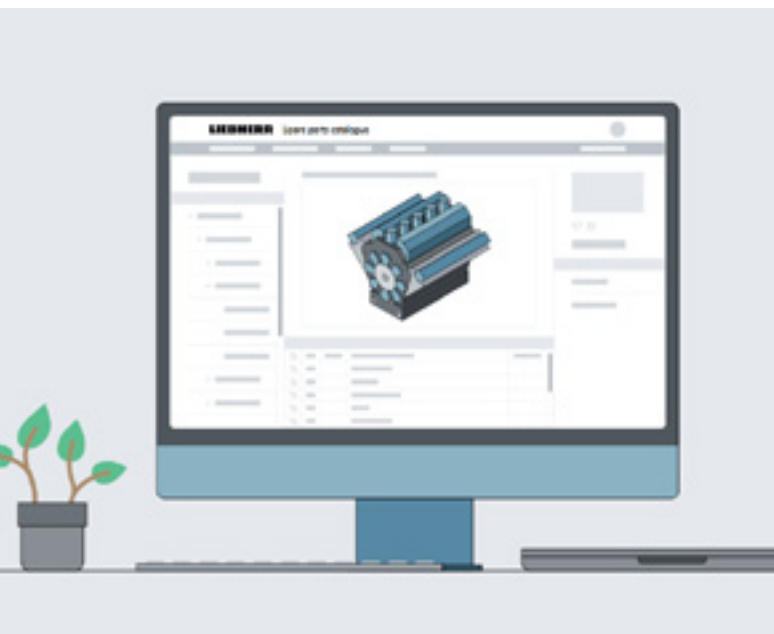
Day to day, Zayas supports platform rollouts, develops and hosts online training, and collaborates with factory-level counterparts in Europe who actively develop in-house digital programs. He also assists in the integration of newly launched applications on major platforms including MyLiebherr and the Dealer Portal.

As the portal offers telematics maintenance, machine performance data, parts availability, manuals, and more, Zayas works directly with end users to ensure that the system is not only efficient, but user-friendly. He adjusts certain aspects such as clicks, backlinks, and overall scalability to enhance usability. Additionally, two new digital services, MyLiebherr Maintenance and MyLiebherr Performance, are scheduled for rollout in the second half of 2026 to further support end-user platforms. Zayas noted, "As the digital solutions specialist, I serve as a bridge between business needs and technological advancements."

To provide more hands-on customer service, Zayas also travels to Liebherr dealers, hosting training sessions for administrators, field technicians, and sales representatives on how to use tools such as service tickets, placing orders, navigating licensing tools, and telematics support.

Liebherr's hands-on approach and exceptional customer service are vital across all product segments, including mobile and crawler cranes. No stranger to providing excellent customer support online and in person is Trina Baughman, who serves as product manager of digital services for mobile and crawler cranes. Over the last 23 years, Baughman has worked in multiple service positions at Liebherr and now directly supports the MyLiebherr platform for customers in this segment.

On MyLiebherr, Baughman provides extensive support for programs such as Crane Planner 2.0, Crane Finder, and Performance. When activated, these tools can capture crane data such as crane position (GPS), carrier and superstructure hours, fuel usage, wind speeds, temperature, and load cases. Each application provides real-time data to operators, aiding in more efficient usage of the crane, ensuring the project remains on schedule and within the projected budget. With multiple programs for customers to navigate, Baughman's goal is to guide users through





the portal and help them understand how to use each application efficiently for each crane, including the recently added Mobile Construction (MK) cranes.

To ensure complete customer satisfaction, Baughman spends up to 80 % of her time traveling to customer sites to conduct in-person overview training. These sessions include reviews of Crane Planner and Crane Finder, introductions to Performance, previews of new and upcoming features, and testing of new programs. She also collects feedback and recommendations from US customers and works diligently with her European counterparts to implement those insights into subsequent versions of the programs.

“The evolution of digital services has created requirements to collaborate closely with other departments and new personnel,” said Baughman. “Through this position I have learned that people are my purpose and MyLiebherr is my passion.”



### How can customers measure success through Liebherr's digitalization efforts?

**Isaac:** Utilizing our platforms provides dealers and customers essential data for peak performance of their machines. Applications such as MyLiebherr Maintenance and MyLiebherr Performance allow our team to troubleshoot any issues remotely, getting customer machines up and running faster and keeping them in service longer. Higher machine productivity leads to projects getting completed on time and budget.

**Trina:** Each platform on MyLiebherr provides real-time data to the customers. This data can be utilized to enhance operator use of the crane and safety of the jobsite as well as support unique project requirements such as large elevation changes, complicated lifts, or maneuvering in a highly populated area.

On our end, we not only evaluate monthly statistical reports to capture online parts orders and product registrations, but we see real value in direct customer interactions. Requests and site visits help ensure that users receive individualized dashboards and assistance to meet their specific needs.

### What advice do you have for a prospective hire entering the digital workforce?

**Isaac:** Be open to rapid change. Every day will look different, and you must be willing to try new experiences, opportunities, and technologies to grow in this field.

**Trina:** Always make sure that you know your purpose and be passionate about what you are doing. You do not need to be a computer expert. Utilize your strengths to complete your job the best way possible.

---

# 04

---



**Responsibility**

# Making tomorrow possible today

As a family-run company, Liebherr operates in a way that ensures future generations inherit a world with promising living and working conditions. This approach offers a wide range of opportunities for action.

“I shall act always so as to increase the total number of choices.” This ethical imperative of the Austrian physicist and cybernetician Heinz von Foerster (1911–2002) describes a principle that resonates deeply with Liebherr’s approach. When companies take responsibility for the environment, society, and long-term economic viability, acting sustainably expands future options.

For over 75 years, the Group has applied its products and services, strategies, processes, business models and relationships with employees, customers, partners, and sites around the world.

As an independent and long-term-oriented business, Liebherr prioritizes resource-efficient products, processes, and infrastructure. Safety, economic efficiency, and environmental compatibility are central to its operations. Responsibility for people, the planet, and progress is anchored in its core values.

## **Sustainability in harmony with the global community**

Liebherr aligns its sustainability efforts with the 17 United Nations Sustainable Development Goals (SDGs), focusing on four key areas: products and services, environment and energy, employees and society, and sustainable business practices. Each area is supported by central themes, targets, and measures currently in development.

To achieve the SDG-related target of net zero greenhouse gas emissions by 2050, the Group has put decarbonization and digitalization on its agenda for technological development. This reflects a clear understanding that the heavy machinery industry plays a crucial part in this journey.

Liebherr machines help extract critical raw materials, like copper, lithium, nickel, and manganese, needed for electrifying transportation. Drive units and bearings are used in wind turbines, while cranes support the construction of onshore and offshore wind farms. Liebherr machinery also plays a vital role in building and renovating energy-efficient infrastructure.

## **Technology-neutral innovation**

Sustainable transformation requires machines that are not only

low-emission but also high-performing and practical. Liebherr is committed to a technology-neutral approach, exploring a wide range of alternative drives and energy sources to find the best solution for each application. Life cycle analyses (LCA) show that most CO<sub>2</sub> emissions occur during machine operation, not manufacturing. Therefore, Liebherr considers the full life cycle, including infrastructure, energy supply, maintenance, and end-of-life reuse, when designing sustainable solutions.

Electrification is already a reality for many machines, such as cranes, excavators, and wheel loaders, which can operate via the grid where power is available. For sites without grid access, mobile energy storage systems and hybrid drives offer clean alternatives.





For heavy-duty, long-duration operations, electrification is not always feasible. Here, synthetic fuels and hydrogen engines offer promising solutions. Liebherr is actively testing hydrogen engines in real-world conditions. These engines deliver high power density and fast refueling, comparable to diesel, without requiring complex infrastructure. A mobile refueling system developed in-house adds flexibility, especially in remote locations.

### **Circular economy in action**

The most sustainable resource is the one that does not need to be newly extracted. Liebherr embraces the circular economy through remanufacturing, reconditioning used parts to return them to the value chain.

This process, continuously refined with advanced manufacturing technologies, includes complete disassembly, cleaning, inspection, and reassembly of engines, gearboxes, and hydraulic components using new or refurbished parts. The result: significant savings in materials, energy, and CO<sub>2</sub> emissions compared to producing new components.

Remanufacturing also delivers economic benefits. Customers receive parts that are as reliable as new but

more affordable and resource-efficient. Machine lifespans are extended, and total cost of ownership is reduced. In fact, this approach can save up to 78 % of raw materials and cut CO<sub>2</sub> emissions by up to 66 %. This represents a measurable contribution to sustainable business.

### **Digitalization: smarter, faster, and more efficient**

Sustainability and digitalization go hand in hand. Smart technologies, AI, and connected systems help optimize processes, reduce energy use, and enhance operational efficiency.

Liebherr Connect, a portfolio of digital services, enables predictive maintenance and real-time monitoring while upholding the highest cybersecurity standards. Machines can autonomously report upcoming maintenance needs, reducing downtime and conserving resources.

Digital twins are another game-changer. These virtual models allow machines to be simulated and optimized before they are built. By shifting trial-and-error testing from physical prototypes to digital environments, Liebherr accelerates development, cuts costs, and reduces energy and material consumption.

Beyond development, digitalization continues to deliver sustainability gains in the field. Data from real-world operations reveals where energy can be saved and emissions reduced. Connected machines also streamline coordination across trades on large construction sites, minimizing delays and maximizing efficiency.

### **Closer to customers, stronger together**

Digitalization also strengthens relationships between manufacturers, customers, and partners. The MyLiebherr customer portal gives users 24/7 access to spare parts, maintenance data, and technical support in just a few clicks. This seamless access to information enhances uptime, productivity, and customer satisfaction.

The combination of sustainable technology and digital efficiency is a key driver of future viability. While the challenges ahead are significant, they are met with confidence due to a highly skilled workforce and strong global network.

For Liebherr, responsibility is not about limiting possibilities. It means creating new ones for today and for generations to come.

# Liebherr-Reman: a new life for used components

The Liebherr-Reman program delivers cost-effective, sustainable solutions by giving used components a second life. Through advanced remanufacturing, energy-intensive materials are recovered and transformed to “same-as-new” quality, contributing to the overall circular economy.

By remanufacturing used component cores, the Reman program not only benefits Liebherr, but customers and the greater environment. The Reman program offers three remanufacturing levels, exchange of components, general overhaul, and repair tailored to each customer’s individual needs and timeframe. For North American equipment owners, this means lower costs, less waste, and a greener future.

By participating in the reuse cycle, customers enjoy significant savings on materials as well as a reduction in maintenance and downtime as Reman components are more affordable and readily available. Offering top quality OEM parts, Liebherr can remanufacture used components, making them as good as new in terms of performance and reliability. The remanufacturing process also saves energy, reduces landfill waste, and cuts overall CO<sub>2</sub> output by 50 %.



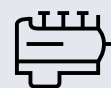
## At a glance: Liebherr reman in facts and figures

> **15**

**sites** around the world

> **550**

**employees** around the world



**7,500**

**components remanufactured** per year, as well as countless individual parts

# Liebherr Reman – eight steps to a second life

- 1 Pre-cleaning:** dirt, oil, and deposits are removed using steam jets and sand blasting.
- 2 Disassembly:** the components are broken down into their individual parts.
- 3 Deep cleaning:** individual parts are cleaned with maximum precision.
- 4 Diagnostics:** every part is inspected to identify any wear or damage.
- 5 Mechanical processing:** where necessary, individual parts are remanufactured.
- 6 Assembly:** the components are put back together.
- 7 Testing:** every unit is run through tests in line with series production standards.
- 8 Painting and delivery:** the finishing touches before the product goes to the customer.

## Remanufacturing excellence

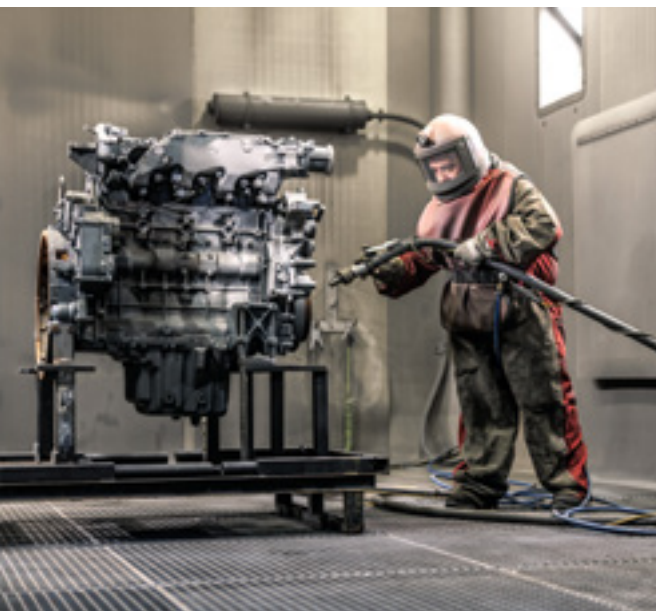
- **Global reach, local support**  
With facilities across North and South America, Europe and beyond, our network ensures you have fast access to remanufactured components and expert service, right where you need them.
- **Sustainability at scale**  
By remanufacturing locally, we help you cut costs, reduce waste, and lower your carbon footprint, while keeping your equipment running reliably.
- **Quality you can trust**  
Every remanufactured component meets Liebherr's "same-as-new" standards for performance and reliability, backed by our expert teams.
- **Tailored solutions**  
Whether you need repairs, exchanges, or overhauls, our specialists deliver solutions customized to your region, fleet size, and operational needs.
- **Efficient logistics**  
Our strategically located sites and upcoming Tupelo, MS, distribution hub mean reduced wait times, optimized parts availability, and seamless service for your equipment.

## Reman in North America

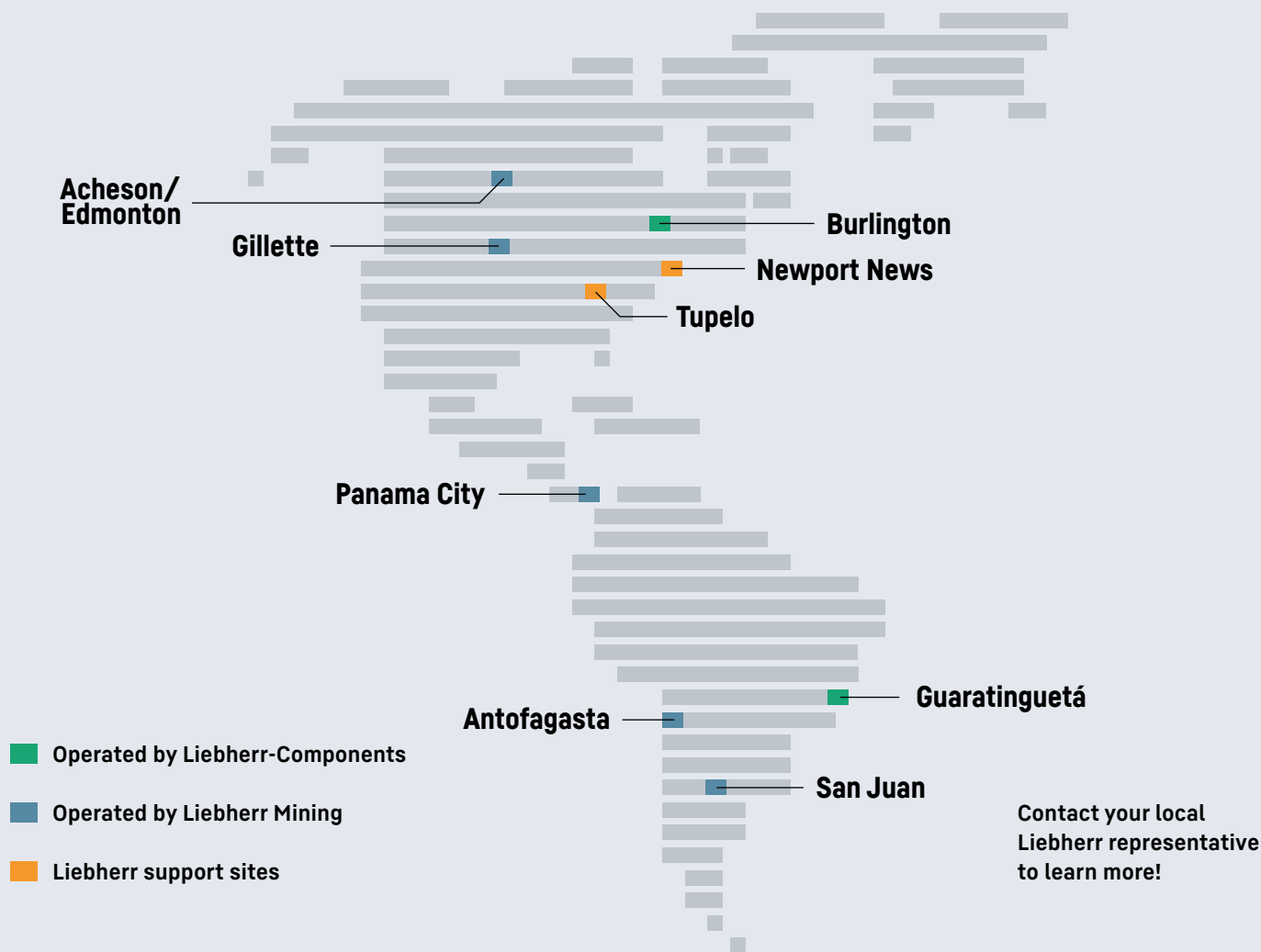
With 15 sites around the world, Liebherr has continually expanded the Reman program globally. In 2015, Liebherr Canada Ltd. officially joined the remanufacturing program providing the same sustainable solutions for North America. By offering end to end service coordination within the region, customers from Canada, the United States, and Mexico can benefit from cost effective and time efficient options to fully service their equipment. Opening in 2027, Liebherr is also establishing a new warehouse in Tupelo, MS, to optimize parts availability, provide high-quality customer service, and serve as a distribution hub for the Americas.

## North American remanufacturing capabilities at a glance:

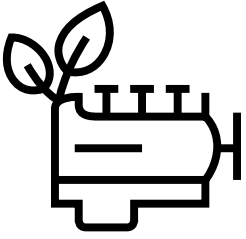
- Combustion engines
- Fuel injectors, hydraulic pump and motor repairs
- Gearboxes, hydraulic cylinders
- Rope winches
- Electric motors



# Proven globally, united locally – Reman near you:



Location	Country	Comment/Portfolio
Guaratinguetá	Brazil	Components product segment operated: provides reman components for various Liebherr products. Overhaul and repairs of various drive-train components
Burlington/Ontario	Canada	Components product segment operated: provides reman components for various Liebherr products. Overhaul and repairs of various drive-train components
Acheson/Alberta	Canada	Mining product segment operated: remanufacturing and repair of various components for mining equipment
Newport News/Virginia	USA	Sales and service center for Liebherr USA, Co.
Gillette/Wyoming	USA	Mining product segment operated: remanufacturing and repair of various components for Mining equipment
Tupelo/Mississippi	USA	Distribution hub for the Americas, becoming one of four Liebherr-Logistics GmbH warehouses globally
Antofagasta	Chile	Mining product segment operated: remanufacturing and repair of various components for Mining equipment
Panama City	Panama	Mining product segment operated: remanufacturing and repair of various components for Mining equipment



# Drive technologies: many routes leading to the same destination

Through the systematic defossilization of drive systems for construction machinery and cranes, Liebherr has its own climate targets firmly in its sights, and those of its customers, too. The only way to reach these targets is via a path that embraces technology-neutral approaches. After all, there is not a one-size-fits-all-solution for every application scenario.

The drive is more than just the “engine” of a machine. It in fact conceals the complex system of converting and transferring energy within a machine. This is true not only of combustion engines, but also gear-boxes, hydraulic pumps and engines, valves, hydraulic cylinders and, in the case of electric drives, the electric motors and performance electronic components too. The development departments at Liebherr maintain a clear focus on providing optimal technology for the specific area of application. The basis for this is established by four pillars, upon which rest all of the drive concepts Liebherr has developed as an alternative to burning fossil energy carriers:

**1. Reducing greenhouse gas emissions**

**2. Availability and infrastructure of the energy carriers**

**3. Technological maturity of the developments**

**4. Foreseeable costs of future energy carriers**

These four pillars form the framework for Liebherr’s technology-neutral approach to development, while also paving the way towards the future of sustainable technological leadership.

## Fossil diesel

- **Status:** still the primary source of energy for heavy, mobile off-road machinery
- **Areas of use:** construction and mining machinery with high performance requirements and long operating times
- **Potential:** further efficiency gains through technological advances. The Liebherr balance sheet: 97% less nitrogen oxide and soot particles than in 2000
- **To-dos:** to reduce CO<sub>2</sub> emissions by adding or switching to sustainable alternatives (e-fuels, HVO)

## Synthetic diesel (e-fuels)

- **Status:** Liebherr machines are compatible with minimal or no adaptations. Production volumes are low and energy consumption in production is high.
- **Areas of use:** as an addition to or replacement for fossil diesel in existing engines. Liebherr is working on injection technology, where e-fuel can be used as an ignition aid (for e.g. ammonia).
- **Potential:** long-term carbon-neutral, if manufactured using exclusively renewable energies
- **To-dos:** to expand the generating capacities

## Hydrotreated vegetable oil (HVO)

- **Status:** all Liebherr machines are already supplied HVO-ready. Energy carriers are available on the market, but in limited volumes
- **Areas of use:** alternative to diesel in existing combustion engines
- **Potential:** no aromatic compounds, lower emissions than fossil diesel
- **To-dos:** limited availability of raw materials, cannot fully replace diesel and kerosene

## Mains-operated machines

- **Status:** already in operation for decades at Liebherr (e.g. tower cranes, excavators)
- **Areas of use:** construction and material handling machines with semi-stationary application and mobile cranes in crane companies
- **To-dos:** zero-emissions operation when used in combination with green energy. Network coverage, use of (mobile) energy storage systems to increase peak performance, overcoming power cuts and zero-emissions operation without available mains connection.

## Battery-operated machinery

- **Status:** Liebherr offers solutions that are ready for series production. Increasingly widespread, especially in smaller machines
- **Areas of use:** small and medium-sized machines. Large machines are applicable, provided suitable application profile and necessary charging infrastructure available
- **Potential:** zero-emissions if operated with green electricity. High efficiency
- **To-dos:** to expand the Liebherr Battery Competence Centre in Biberach (Germany). Charging infrastructure required, limited energy density of the batteries

## H<sub>2</sub> piston engine

- **Status:** Liebherr's first prototypes in operation
- **Areas of use:** larger machines with long operation times and high capacities, such as wheel loaders and excavators
- **Potential:** carbon-neutral operation when using green hydrogen. Fast refueling
- **To-dos:** infrastructure for green hydrogen production and distribution

## Fuel cells

- **Status:** in pre-development phase for construction machinery from Liebherr
- **Areas of use:** medium and large machines
- **Potential:** zero-emissions operation when using green hydrogen. High efficiency. Fast refueling
- **To-dos:** infrastructure for green hydrogen production and distribution, technological maturity of fuel cell systems for off-road applications and marketable costs of fuel cell systems

## Ammonia

- **Status:** in pre-development phase for mining applications from Liebherr
- **Areas of use:** large machines with very high energy turnover
- **Potential:** carbon-neutral operation when using green ammonia. Provisionally the most affordable green energy carrier for use in piston engines
- **To-dos:** technical maturity for operation in initial prototype machines, infrastructure for production and distribution of green ammonia



# Built to last: Liebherr USA's commitment to people, planet, and progress

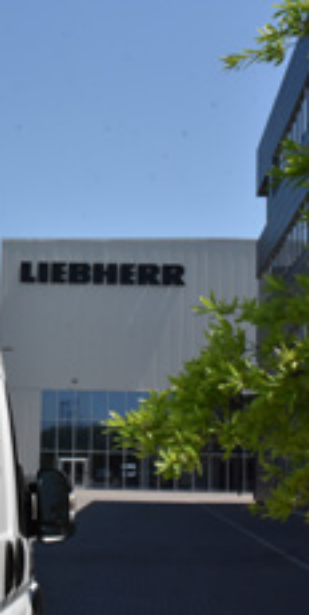
The Liebherr Group aims to be an economically, ecologically, and socially responsible company by providing innovative solutions that improve the quality of life for present and future generations. Liebherr's Corporate Responsibility strategy is built around four central fields of action: products and services, environment and energy, employees and society, and sustainable management. While all four serve as a framework for the Group's long-term vision, specific initiatives across Liebherr in the USA demonstrate strong progress in the latter three key areas of the strategy.

Across North America, Liebherr USA has launched a series of impactful sustainability initiatives to reduce its environmental footprint and advance responsible business practices that align with the Group's overall corporate responsibility strategy.

Each North American company is actively undertaking a journey toward positive action and supporting community initiatives. In the U.S., one of the first steps taken was the establishment

of a sustainability team across all 15 Liebherr locations in the USA. Building on the already-existing sustainable initiatives, team members serve as liaisons to assist in implementing initiatives and advocate for local needs. By leveraging the sustainability team's first-hand knowledge of each location, the central strategy of the Liebherr Group for corporate responsibility can be tailored to reflect local resources, challenges, and priorities.

Based on initial meetings and recommendations in 2025, Liebherr USA's sustainability team is actively working on multiple preliminary goals, including greenhouse gas reduction and eventual carbon neutrality by 2050, implementing best practices for water management at all US locations by 2030, and reducing overall waste and waste to landfill operations by 50 %.



Local initiatives have also begun, including a new paperless program to enhance western operations based in Wyoming and innovative cardboard recycling solutions to enhance waste management efficiency in Texas. Additionally, across all Liebherr sites in the United States, Liebherr USA is actively working to reduce use of disposable utensils and single-use items, creating a culture of environmental responsibility in everyday workplace habits.

The projected impact of removing single-use items at just one Liebherr USA location is equivalent to planting 150 trees or preventing 295 lbs of CO<sub>2</sub> from being released into the atmosphere. The reduction in landfilled volume is also significant and supports the goal of a 50 % decrease in landfill intensity by 2030. As of 2025, Liebherr USA locations have increased recycling capabilities by 150 %.

### **Supporting local communities**

Liebherr not only empowers individuals to make a positive impact at work, but also values the unique contributions made within local communities. Each year, employees can support and strengthen their communities through the Employee Sponsorship Program, allowing employees to allocate funds to help support non-profit organizations that are important to them. Over the years, this program has helped

employees to raise money and volunteer time to causes they are passionate about, including local youth sports teams, women's shelters, and autism awareness foundations.

In addition to employee sponsorships and fundraising, Liebherr USA hosts multiple events throughout the year that encourage team participation for shared causes. These efforts have resulted in community cleanups, Habitat for Humanity volunteer days, and Red Cross blood drives.

"Caring for our community and those in need is something Liebherr USA embraces with deep commitment, whether it is through our Employee Sponsorship Program or corporate sponsorships. We are proud to support the efforts of various organizations working to make a tangible difference in our community in moments that matter," noted Alexandra Hobgood, general manager of Corporate Responsibility, Liebherr USA, Co.

Giving back to communities and taking steps towards environmental and social responsibility is just the beginning. By enabling employees and driving accountable actions, the goal is to create a better future – for many generations to come.

### **Sparking positive change**

Employee-driven sustainability initiatives are a powerful force for progress, especially when led by individuals who understand the intricacies of daily operations. Thomas Gilliam, workshop planner for Mobile and Crawler Cranes, is currently spearheading an effort to reduce the excessive use of brake-clean aerosol in his shop. After analyzing the number of cans used per technician each day, he identified a smarter, more resource-efficient alternative.

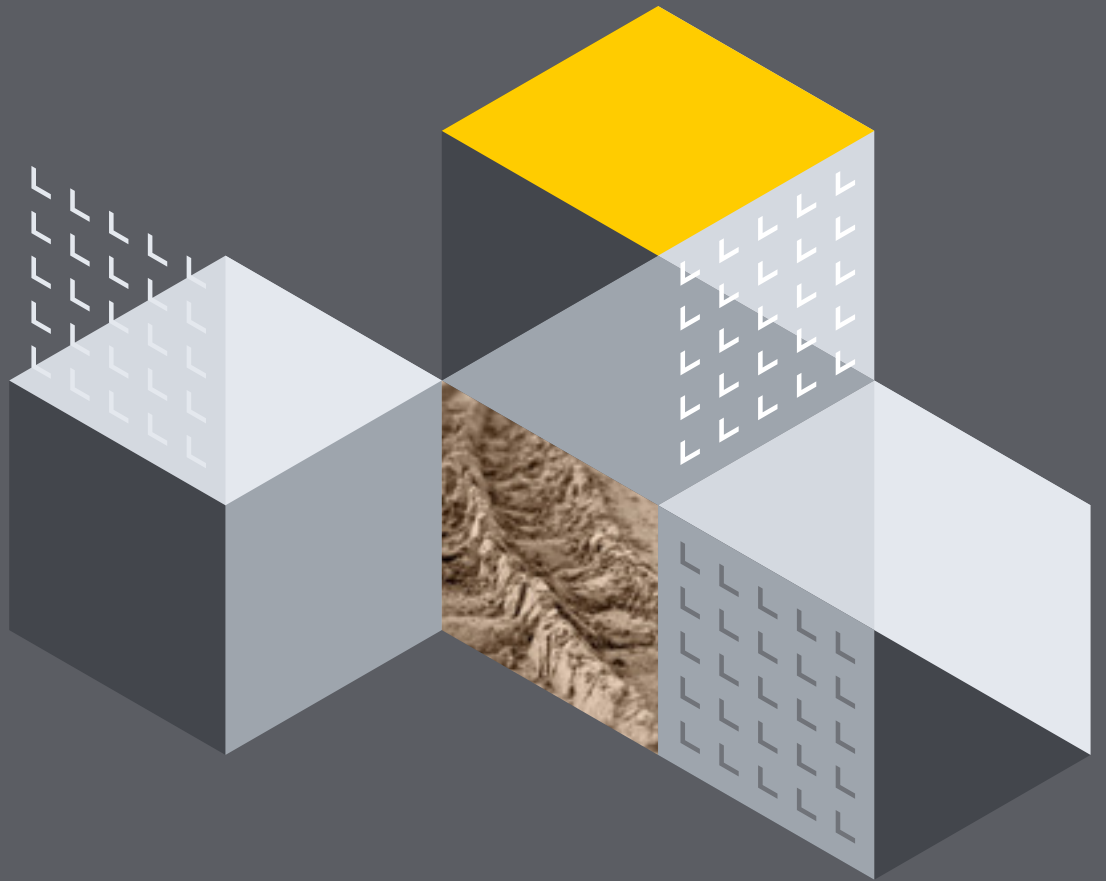
Recognizing that partially used cans were frequently discarded, Thomas proposed switching to refillable containers. As part of the new pilot phase, each technician maintains a personal can, refilled from a central five-gallon tank and pressurized using in-house equipment. This simple yet effective change not only minimizes waste and lowers costs, but also significantly reduces the shop's carbon footprint.

Thomas advises others who see potential to make positive changes, "Be courageous, don't be afraid to say something to spark change. We should all be actively doing little things to support not only Liebherr, but the greater world."

---

# 05

---



**Highlights from the product segments**

# Earthmoving



## Clearing the way to greatness

Belchertown, Massachusetts Department of Public Works partners with local Liebherr dealer, Quality Fleet Service, to utilize the Liebherr L 550 Xpower wheel loader across a variety of projects. These include site preparation and the handling of dirt and debris on worksites around town.

The Liebherr L 550 XPower wheel loader is built with an innovative driveline that helps reduce fuel consumption and wear on tires and brakes. That means lower operating costs and top-notch performance for material handling, making it a great choice for boosting productivity.

## TA 230: powerful, robust, and safe

**Built for the toughest off-road use, the Liebherr Articulated Dump Truck TA 230 features an efficient drivetrain and solid axle mounts.**

Equipped with four differential locks, the vehicle is well-suited for the most difficult ground conditions. The TA 230 is not just powerful, robust, and efficient, but also has a machine body designed for easy maintenance. A smart machine check-up and unhindered access to the entire engine bay minimizes daily maintenance work.

### Facts & figures

Operating weight	47,400 - 58,400 lbs (21,500 - 26,500 kg)
Max. dump body capacity	23.67 yd <sup>3</sup> (18.10 m <sup>3</sup> )



## A 924: efficient machine for demanding excavation work

**The Liebherr A 924 wheeled excavator offers an engine power of 190 hp (140 kW) featuring high efficiency with low fuel consumption, approx. 2.86 gal/h (10.83 L/h).**

This makes the A 924 the ideal partner on any construction site. In practice, this wheeled excavator offers an impressive performance with its perfectly coordinated components, and maximum precision. A bucket volume of up to 58.27 ft<sup>3</sup> (1.65 m<sup>3</sup>), strong digging force, and a short tail swing radius ensure powerful and flexible performance, even on confined construction sites.

### Facts & figures

Tail radius	9 ft 6 in (2,900 mm)
Operating weight	47,400 - 58,400 lbs (21,500 - 26,500 kg)



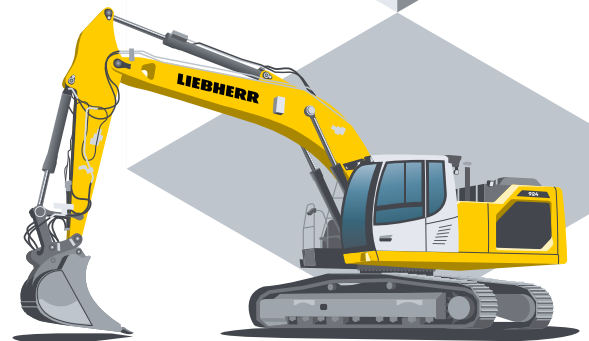
## R 924 G8: enhanced efficiency and performance

**The R 924 G8 delivers strong digging forces and fast work cycles, making it perfectly suited for earthmoving and construction tasks.**

The R 924 G8 features modern design and modular architecture. It has been revamped to offer the best possible ergonomics and performance, as well as improved safety.

### Facts & figures

Operating weight	51,590 - 57,430 lbs (23,400 - 26,050 kg)
Engine output	129 kW (173 hp)



## R 945 G8: performance, design, and robustness

The R 945 G8 combines robust power and low fuel consumption with innovative design, ideal for demanding earthmoving and quarrying tasks.

Its redesigned architecture includes a reinforced undercarriage for improved stability, optimized boom geometry for greater breakout forces, and a heavier counterweight to support larger buckets – up to 3.92 yd<sup>3</sup> (3 m<sup>3</sup>). Key advantages of the Generation 8 are the higher engine power, the heavy counterweight, which allows higher bucket capacities, and reduced fuel consumption.

### Facts & figures

Operating weight	90,830 – 103,730 lbs (41,200 – 47,050 kg)
Engine output	220 kW (295 hp)



## R 914 Compact: compact power with precision control

The R 914 Compact is Liebherr's smallest crawler excavator, designed for high performance in confined spaces.

The machine delivers impressive breakout force and smooth, precise movements – even at high speeds. Its compact dimensions and short rear slewing radius of just 5 ft 1 inch (1.55 m) make it an ideal fit for urban construction sites and landscaping projects.

### Facts & figures

Operating weight	32,520 – 36,930 lbs (14,750 – 16,750 kg)
Engine output	90 kW (121 hp)



---

# Material handling technology

---

## Leading the way in recycling innovation

Longtime Liebherr customer Stainless Steel Midwest has earned its reputation as a premier expert in stainless steel recycling across the United States, in part due to its use of advanced equipment like the Liebherr LH 60 M material handling machine. Utilizing Liebherr material handling technology, they are recognized for providing efficient recycling services as well as offering comprehensive solutions for stainless steel and alloy materials.



## LH 60 M Industry E: zero-emissions powerhouses for bulk and general cargo

The LH 60 M Industry E is the ideal solution for demanding material handling in a wide range of applications.

The electric drive concept enables zero-emission and low-noise operation with low operating and maintenance costs.

Thanks to Liebherr's innovative energy recovery system, the LH 60 M Industry E achieves maximum handling performance with reduced energy consumption. This not only results in powerful and smooth work processes, but also in a significant increase in overall efficiency.

### Facts & figures

Reach	65 ft 7 in (20 m)
Operating weight	124,600 – 143,300 lbs (56,500 – 65,000 kg)



## Opening up new horizons: Liebherr PR 736 G8 crawler dozers

Full power, maximum precision, and efficient performance, the PR 736 G8 is designed to excel under demanding conditions.

Whether moving material or performing fine grading, this crawler dozer keeps operations smooth and productive.

Equipped with a hydrostatic drive and advanced Operator Assistance Systems such as Free Grade, Definition Grade, and Auto Blade Pitch, the PR 736 G8 ensures precise, efficient work while optimizing fuel consumption. For added flexibility, the optional LiReCon teleoperation system enables remote operation in challenging environments.

### Facts & figures

Operating weight	46.7 – 56.2 USt (21,200–25,500 kg)
Engine output	217 hp / 160 kW (ISO 9249)
Avg. fuel consumption	10 gal/h (≈ 38 L/h)
Travel speed	6.8 mph (11 km/h)
Assistance systems	Free Grade, Definition Grade, Auto Blade Pitch Remote control Liebherr LiReCon



# Mobile and crawler cranes

## Tilting heads in Mexico City

Mexican crane rental company Magruber rents out a Liebherr LTM 1450-8.1 to lift and place “Tilt Up” construction concrete panels at the Tultepec Industrial Park in Mexico. The crane was used to lift 72 USt (65 t) panels from different positions with a radius of up to 60 ft (18 m). Magruber is a long-term Liebherr customer, owning over a dozen Liebherr all-terrain cranes from 60 USt (50 t) up to 550 USt (450 t) capacity, with a sharp eye on a modern and well-maintained crane fleet in Mexico City.



## LTM 1055-3.3: less weight for heavy lifting

The LTM 1055-3.3 is a 3-axle all-terrain crane that redefines mobility. Its lightweight design and low axle loads mean that complex driving permits are no longer required in many markets. With its 131 ft (40 m) telescopic boom and high lifting capacity at large radii, it offers impressive lifting performance – ideal for assembly work in industrial halls and for work in confined spaces.

### Facts & figures

Telescopic boom	<b>131 ft (40 m)</b>
Max. lifting height	<b>177 ft (54 m)</b>
Max. load	<b>65 USt (55 t)</b>



## Zero emissions, full performance, increased safety

The LTM 1150-5.4E and LTM 1150-5.4 mobile cranes set new standards in performance and efficiency.

The LTM 1150-5.4E combines electric drive with maximum power and enables zero-emission operation with up to four hours of autonomous use due to its integrated battery – ideal for zero-emission construction sites and noise-sensitive areas. The LTM 1150-5.4 is a 175 USt (150 t) mobile crane from the latest generation, equipped with the modern LICCON3 control system. The trusted operating concept and assistance systems ensure a seamless changeover and even greater safety.



### Facts & figures

#### LTM 1150-5.4

Max. lifting capacity	<b>175 USt (150 t)</b>
Telescopic boom	<b>217 ft (66 m)</b>

#### LTM 1150-5.4E

Power of electric motor	<b>111 kW</b>
-------------------------	---------------

## LTM 1400-6.1: the most powerful 6-axle crane in the world

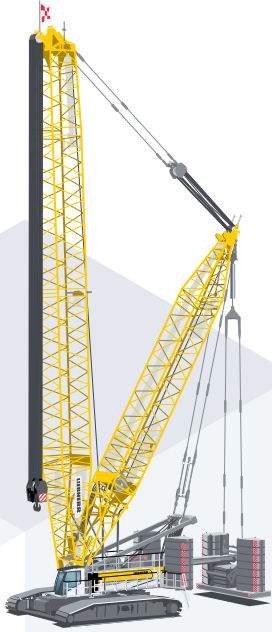
The LTM 1400-6.1 is the most powerful 6-axle crane in the world and the successor to the LTM 1350-6.1.

It offers impressive lifting capacity, a 230 ft (70 m) telescopic boom and is easy to set up. As the smallest crane with Y-guying, it is the perfect introduction to load-increasing boom technology and is ready for use in just a few minutes because of the uncomplicated self-assembly of the guying.



### Facts & figures

Max. lifting capacity	<b>500 USt (450 t)</b>
Telescopic boom	<b>230 ft (70 m)</b>
Max. lifting height	<b>394 ft (120 m)</b>



## LR 1400.1 SX: improved load and utmost safety

The LR 1400.1 crawler crane with derrick equipment and suspended ballast is optimized for heavy-duty hoisting operations and long jib configurations. VarioTray enables flexible ballast adjustment without the need for an auxiliary crane, while assistance systems such as “Gradient Travel Aid” and the “Boom Up-and-Down Assistant” ensure maximum safety.

### Facts & figures

Max. ballast adjustment	<b>VarioTray with 11.1 USt (10.1 t) ballast weights</b>
Max. lifting capacity	<b>378 USt (342.7 t)</b>
Max. main boom	<b>390 ft (119 m)</b>

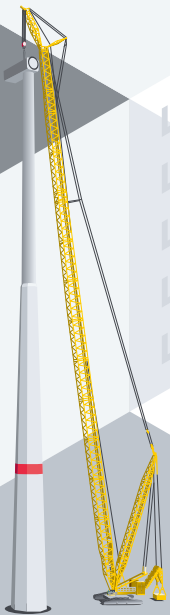


## Liebherr mobile construction cranes MK: the perfect symbiosis of two crane systems

In a world where speed, efficiency, and adaptability determine success on the construction site, Liebherr’s mobile construction cranes set the standard. They combine the mobility of a mobile crane with the functional advantages of a tower crane – a unique combination that makes them optimal machines in everyday construction. Whether as specialists in urban spaces or on difficult terrain, our mobile construction cranes (MK 73-3.1E, MK 88-4.1E, MK 120-5.1E, MK 140-5.1E) excel in operation even under extreme conditions.

### Facts & figures

Max. lifting capacity	<b>13,230 lbs – 17,640 lbs (6 t – 8 t)</b>
Lifting capacity at max. radius	<b>4,180 lbs – 4,850 lbs (1.9 t – 2.2 t)</b>
Max. lifting height	<b>87 ft – 310 ft (26.5 m – 94.4 m)</b>



## LR 1700-1.0: economical, compact, and strong

The LR 1700-1.0 offers high performance with compact dimensions and economical transport.

It combines the benefits of low-cost transport in the 660 USt (600 t) class crawler cranes with the performance of 825 USt (750 t) class lattice boom cranes. It also features all the innovations of Liebherr’s latest crawler crane developments.

### Facts & figures

Max. lifting capacity	<b>770 USt (700 t)</b>
Max. lifting height	<b>643 ft (196 m)</b>

# Concrete technology

## Park Avenue Pumping

Modern Concrete Pumping Services utilizes the Liebherr 50 XXT truck-mounted concrete pump to pour concrete in the bustling streets of Manhattan, New York. From high-profile projects to demanding construction environments, Modern Concrete relies on the Liebherr 50 XXT pump truck to deliver smooth results while working in congested urban areas. The XXT outrigger supports provide an ideal range of motion on either side of the cab and a full working area in these tight spaces.



## Mobile concrete mixing plant: reducing costs with Mobilmix

The new Mobilmix series from Liebherr enables flexible configuration, short delivery times, and fast assembly due to its modular design.

The use of the LiPerformance process optimization reduces power consumption by up to 30 % and ensures precise dosing with savings of up to 17.5 lbs (8 kg) of cement per 0.76 yd<sup>3</sup> (1.0 m<sup>3</sup>) of concrete.



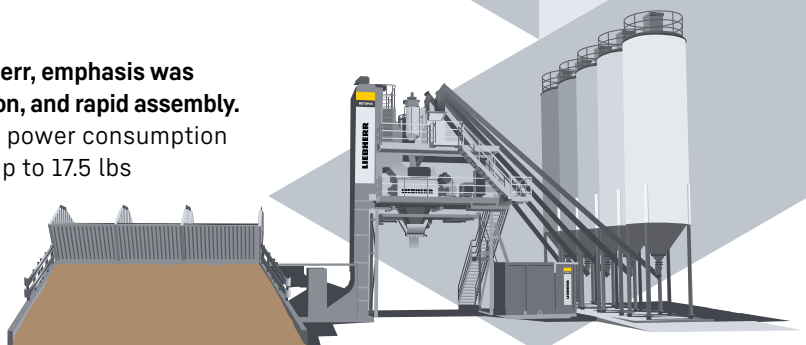
### Facts & figures

Mixer sizes	<b>3.3 – 5.2 yd<sup>3</sup> (2.5 – 4.0 m<sup>3</sup>)</b>
Maximum output	<b>up to 222 yd<sup>3</sup>/h (170 m<sup>3</sup>/h)</b>
Energy saving	<b>up to 30 % due to LiPerformance process optimization</b>
Reduction in mixing time	<b>up to 30 % possible depending on the mixer types and concrete recipes</b>

## Betomix concrete batching plants: diversity redefined

During the development of the new Betomix series from Liebherr, emphasis was placed on unmatched flexibility, sustainable concrete production, and rapid assembly.

The use of the LiPerformance process optimization reduces power consumption by up to 30 % and ensures precise dosing, with savings of up to 17.5 lbs (8 kg) of cement per 0.76 yd<sup>3</sup> (1.0 m<sup>3</sup>) of concrete.



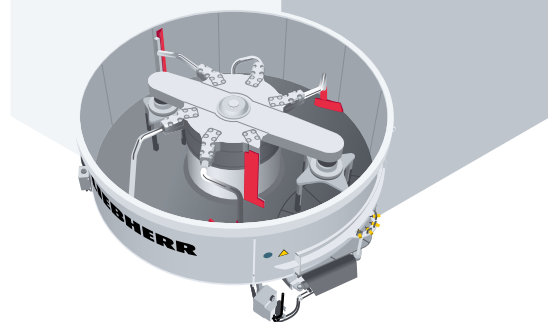
### Facts & figures

Mixer sizes	<b>3.3 – 5.8 yd<sup>3</sup> (2.5 – 4.4 m<sup>3</sup>)</b>
Maximum output	<b>up to 281 yd<sup>3</sup>/h (215 m<sup>3</sup>/h)</b>
Energy saving	<b>up to 30 % due to LiPerformance process optimization</b>
Reduction in mixing time	<b>up to 30 % possible depending on the mixer types and concrete recipes</b>

## Ring-pan mixer RIV 2.5 D: for demanding types of concrete

The RIV 2.5 D ring-pan mixer is suitable for producing demanding types of concrete.

Two independent drives and variable agitator speeds provide maximum flexibility and efficiency throughout the mixing process. Especially when manufacturing high-tech or specialty concrete types, this mixer delivers uncompromising performance. Its unique ring trough design guarantees complete and rapid homogenization of the mix. The open design also simplifies cleaning and maintenance.



### Facts & figures

Agitator speeds	<b>continuously adjustable during the mixing process</b>
Drive systems	<b>two powerful electric motors</b>



## 36 XXT truck-mounted concrete pump: the best all around

The 36 XXT is designed as a compact machine among concrete pumps, offering exceptional versatility.

The boom, which concludes with the feed hopper, significantly shortens the machine length and noticeably increases maneuverability on construction sites and in road traffic. The proven XXT outrigger is particularly flexible, especially when operating in confined spaces.

### Facts & figures

Vertical reach	<b>117.5 ft (35.8 m)</b>
Unfolding height	<b>23.62 ft (7.2 m)</b>
Distributor boom	<b>five-part multi-fold distributor boom</b>



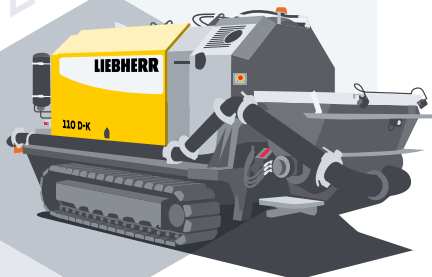
## 38 XXT truck-mounted concrete pump: the classic

The 38 XXT is easy to operate and stands out with its impressive reach.

The robust design of the machine ensures reliable operation over many years, while keeping operating costs low. Ample storage options allow for optimal customization to meet customer requirements. The pivoting XXT support is particularly versatile, especially when working in confined spaces.

### Facts & figures

Vertical reach	<b>121.7 ft (37.1 m)</b>
Unfolding height	<b>28.71 ft (8.7 m)</b>
Distributor boom	<b>four-part Z-fold distributor boom</b>



## Powerful crawler concrete pumps

The high-quality crawler concrete pumps from Liebherr are especially well-suited for concrete pile foundations.

They are also commonly used for long-distance and high-level concrete delivery through concrete pipes or distribution systems. The entire construction is designed for high pumping capacity and cost-efficient operation.

### Facts & figures

Maximum flow rate (rod end):	<b>133 – 177 yd<sup>3</sup>/h (102 – 135 m<sup>3</sup>/h)</b>
------------------------------	---

# Tower cranes



## Crafting colossal Crazy Horse carving

At Conexpo 2023, Crazy Horse Memorial® Chief Mountain Officer Caleb Ziolkowski partnered with Morrow Equipment Company to bring the Liebherr 1000 EC-H 40 tower crane to Crazy Horse – the world's largest mountain carving. This ongoing project supports the Memorial's mission to honor and preserve Native American cultures and heritage.

Standing 290 ft (88 m) tall with a maximum lifting capacity of 88,100 lbs (39,960 kg), the crane reaches nearly every active carving area and will remain in place until completion. The Liebherr 1000 EC-H 40 enables the movement of massive equipment up the mountain, including a 20,000 lbs. (9,070 kg) robotic arm and large granite blocks, eliminating the need to break them down.

# 91 K self-erecting crane: smart technology for modern construction sites

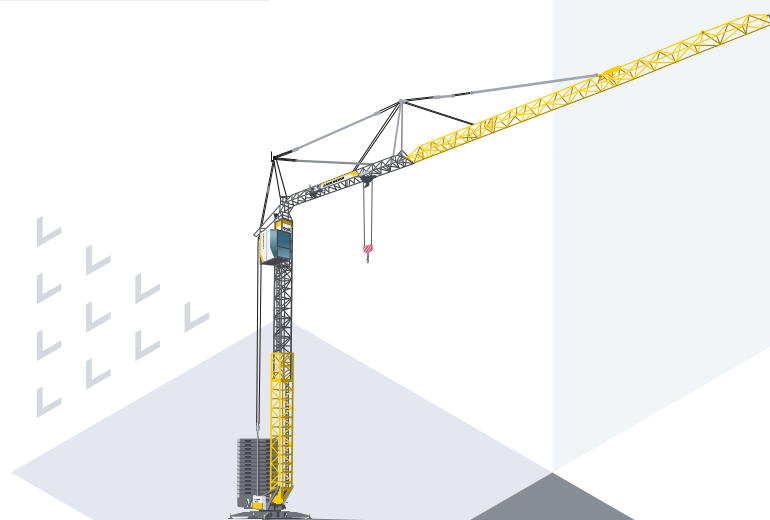
The revised K-series from Liebherr offers self-erecting cranes with intelligent assistance systems for increased safety and efficiency.

Thanks to the new Liebherr control system and operating system TC OS 2, the 91 K crane is ready for the future. The crane can now be ordered with the five intelligent assistance systems: Sway Control and Sway Control Plus, Vertical Line Finder, Guided Hook and Positioning Pilot.

Vertical Line Finder, for example, is a smart function that provides sway-free lifting of loads without diagonal pull. This increases safety for people and sensitive components, while Positioning Pilot with semi-automated lifts ensures high operating comfort. Variably adjustable hook heights and high load capacities make them the ideal solution for demanding construction projects.

## Facts & figures

Maximum hook height	<b>133 ft (40.5 m)</b>
Maximum load capacity	<b>13,230 lbs (6,000 kg)</b>
Radius	<b>up to 157.5 ft (48 m)</b>



# Deep foundation

## Superior flex

At the harbor in Port Arthur (Texas), Liebherr's LRH 200 demonstrates teamwork at its best. Together with the 110 D-K concrete pump, the pile driving and drilling rig is installing 5,532 CFA piles for the foundations of the LNG pressure vessels. The piles are 110 ft (33.5 m) deep and have a diameter of 18 in (45.7 cm). Superior Foundation, Liebherr's customer, highlights the LRH 200's flexibility due to its extensive working radius of up to 28.5 ft (8.7 m) and the superior length of the leader.



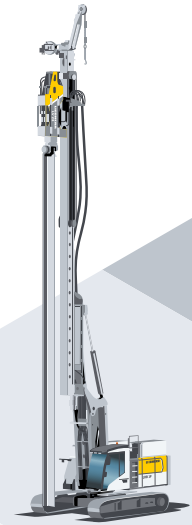
## Pile-driving and drilling: the LRB 19 combines performance and digital innovation

As the versatile successor to the LRB 16 and LRB 18, the LRB 19 piling and drilling rig features an innovative hydraulic quick-change system for various attachments.

The powerful 603 hp (450 kW) motor and compact design enable a wide range of applications with easy transport, while digital assistance systems such as LIPOS ensure maximum precision and safety. An intelligent self-assembly system for the ballast and optimized LED lighting round off the practical features.

### Facts & figures

Operating weight	<b>116,845 lbs (53.0 t)</b>
Max. torque	<b>132,761 lbf*ft (180 kNm)</b>
Max. crowd force	<b>56,202 lbf (250 kN)</b>
Engine power	<b>603 hp (450 kW)</b>



## Higher performance, deeper depths: drilling rig LB 35.1

The new LB 35.1 drilling rig from Liebherr delivers greater drilling depths and efficiency in a compact, transport-friendly design.

The powerful 603 hp (450 kW) engine and 255,934 lbf\*ft (347 kNm) of torque ensure strong performance for demanding drilling tasks such as Kelly drilling, continuous flight auger drilling, or double rotary drilling.

With its new lattice boom extension, the maximum drilling depth for applications using full or partial displacement equipment has been extended to 123.0 ft (37.5 m). Due to the parallel kinematics, the machine has a large working area, which enables short working cycles. Both the leader and the counterweights are modularly designed, making the machine particularly user-friendly and flexible to use. The LB 35.1 can be transported in one piece with the leader folded.

### Facts & figures

Max. torque	<b>255,934 lbf*ft (347 kNm)</b>
Max. winch line pull	<b>67,442 lbf (300 kN)</b>
Max. crowd force	<b>89,924 lbf (400 kN)</b>
Engine power	<b>603 hp (450 kW)</b>



## Strong operating performance: duty cycle crawler crane HS 8100.2

The exhibit, with a maximum load capacity of 220,462 lbs (100 t), showcases a variety of qualities for versatile applications in deep foundation work with heavy slurry wall grabs and draglines, or for dynamic soil compaction.

Liebherr has equipped the HS 8100.2 with 15 % more engine power than its predecessor. The maximum winch line pull of 2 x 66,319 lbf (2 x 295 kN) force has been increased by 9 %. The duty cycle crawler crane can now be used with heavier slurry wall grabs, both mechanical and hydraulic. In dragline operation, the increased engine power results in better digging force and, in dynamic soil compaction, the drop weight can be raised more quickly, meaning higher productivity. Due to the newly designed rope lock on the winches, the rope can be changed more easily and more quickly.

### Facts & figures

Max. lifting capacity	<b>220,462 lbs (100 t)</b>
Engine power	<b>603 hp (450 kW)</b>
Max. winch line pull	<b>2 x 66,319 lbf (2 x 295 kN)</b>
Max. main boom	<b>194 ft (59 m)</b>



## Unlimited potential – components for the future

High-performance components are the lifeblood of every construction machine. They guarantee better performance, greater availability, and maximum energy efficiency – and high operational safety at the same time. Whether it's for classic combustion engines with optimized fuel consumption, alternative drive solutions or mobile energy storage systems, there is suitable technology for every application. Digitalization also brings new opportunities: a broad portfolio of digital products and services to support the transformation within the industry. And that is just the beginning. Find out which innovations will shape the future!

# Components



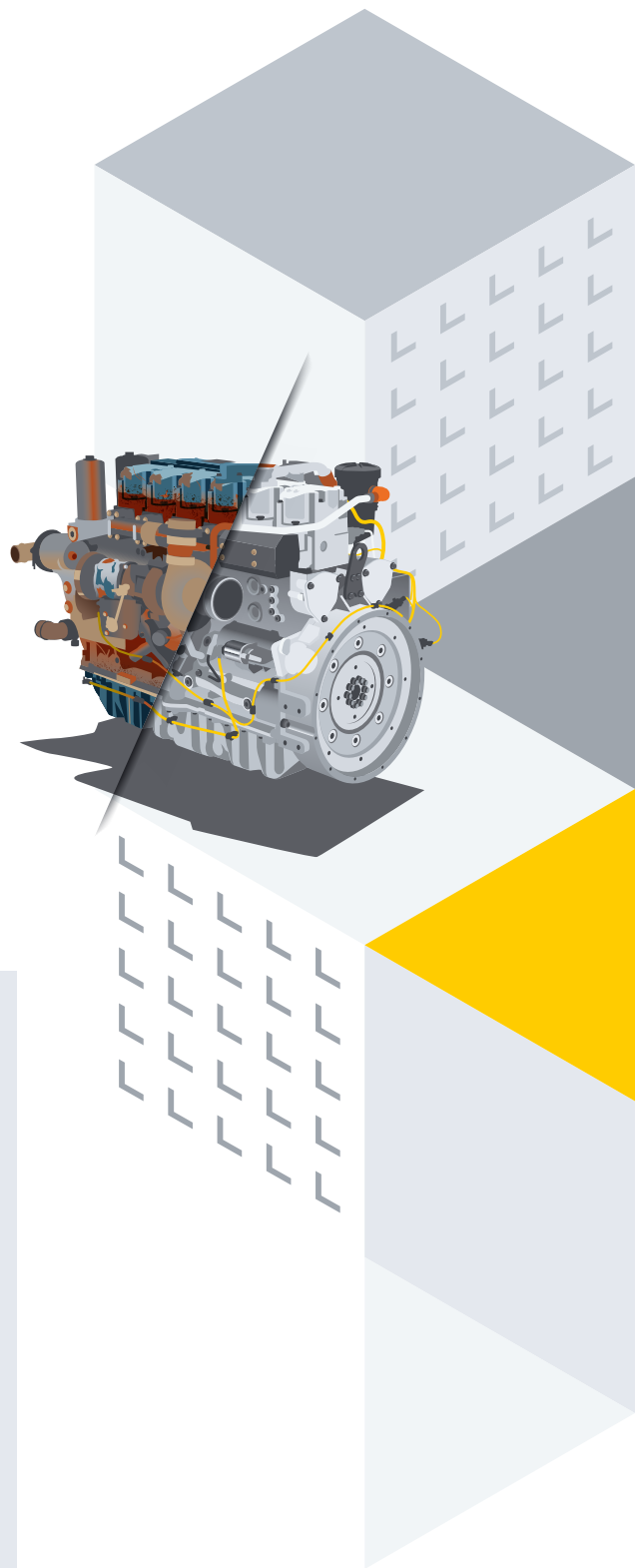
# Efficient power with proven technology

The Liebherr D946 diesel engine combines robust design with advanced emission standards to deliver reliable performance across demanding applications.

With a focus on efficiency and sustainability, it offers strong output while meeting global environmental requirements.

## Facts & figures

Configuration	<b>6-cylinder in-line engine</b>
Displacement	<b>723 in<sup>3</sup> (12.0 L)</b>
Rated power	<b>429 – 536 hp (320 – 400 kW) at 1,900 rpm</b>
Peak torque	<b>1,727 lb-ft (2,342 Nm) at 1,100 rpm</b>
Bore	<b>5.12 in (130 mm)</b>
Stroke	<b>5.91 in (150 mm)</b>
Dry weight	<b>approx. 2,866 lb (1,300 kg)</b>
Emission standards	<b>optimized fuel consumption with identical cooling requirements across regulated and unregulated markets</b>
Relevant applications	<b>construction machinery and agricultural machines</b>



## i

Our Reman program gives components a second life with quality equal to new parts. Each unit is precisely inspected, repaired with OEM parts, updated to the latest standards, and backed by a full warranty. Remanufacturing reduces costs, shortens lead times, and stabilizes the supply chain. By reusing heavy components, CO<sub>2</sub> emissions can be cut by 50 % compared with producing new parts. With flexible options – exchange, overhaul, or repair – Liebherr provides tailored solutions that minimize downtime, protect resources, and support a greener future.

Why choose Reman?

**Simple pricing structure** – fixed pricing solutions for components

**OEM expertise** – factory quality and expertise

**Same price and warranty as new parts** – receive a product with the same life expectancy and support as a new part

**Value added to used machines** – keep older machines running at high production with Reman parts

**Environmental friendliness** – fewer emissions and less environmental waste than manufacturing new

**Commitment to North America** – Reman facility in Canada designed specifically to support local customers

## Short profile

# The Liebherr Group

---

Founded in 1949 by Hans Liebherr, today, the Liebherr Group includes over 150 companies on all continents and employs over 50,000 people.

The Liebherr Group is a family-run technology company with a highly diversified product programme. Not only is the company one of the largest manufacturers of construction equipment in the world; it also provides high-quality and user-oriented products and services in a wide range of areas. The holding company of the Liebherr Group is Liebherr-International AG, whose registered office is in Bulle, Switzerland. All of its shareholders are members of the Liebherr family. For the company, long-term success, sustainable development, stability and reliability are what count.

Liebherr is a pioneer. It is with this pioneering spirit that the company makes a decisive contribution to the history of technology in many industries and already dedicates itself today to challenges that customers will face tomorrow. The Liebherr Group develops and manufactures an enormous variety of fascinating products, which have made their mark on global markets on account of their high precision,

excellent implementation and longevity. The understanding of key technologies allows the company to also offer its customers customised solutions – the highest quality standards apply here and, at Liebherr, the focus is always on customer satisfaction.

To this day, employees around the world share the courage of the company's founder to tread previously unknown paths, and to achieve goals that at first seem unimaginable. They all share a passion for technology and exciting products, as well as a determination to provide excellent solutions for their customers and constantly redefine the limits of what is possible. Working together on these fascinating tasks creates a strong bond that Liebherr's employees can rely on – beyond national borders and continents.



Main locations of the Liebherr companies

More than

# 50,000

employees

---

> 40

production companies

> 150

companies

---

# 13

product segments



Find out more about the Liebherr Group in the annual report

# Highlights from the other product segments

Gear technology and automation systems

## Award for automation solution

Liebherr-Verzahntechnik GmbH received the Best of Industry Award in the Robotics category for its automated solution for dismantling battery packs from electric vehicles. This innovation is part of the ZIRKEL project on recycling battery systems, which is funded by Germany's Federal Ministry of Education and Research (BMBF). Liebherr is working on strategies for efficiently dismantling high-voltage battery systems and maximising the recovery of components and raw materials. The first pilot plant was set up and put into operation in November 2023 in Wolfsburg.



Maritime cranes

## Half a century of innovation

For 50 years, Liebherr has led in mobile harbor cranes, starting with the LGM 1130 in 1974, with further innovations like the LHM 250, LHM 550, and fully electric LPS 420 E being introduced. The latest LHM series underscores Liebherr's commitment to sustainability. Backed by a reputation for reliable equipment and a global service network that extends to even the most remote locations, setting industry standards in performance and support remains a defining strength.

Refrigerators and freezers

## A freezer for the circular economy

The refrigerators and freezers product segment has developed the FNxA 522i, the first Cradle to Cradle Certified® freezer. Cradle to Cradle Certified® is a registered trademark of the Cradle to Cradle Products Innovation Institute. The certification is based on a comprehensive, globally recognized and cross-industry standard for designing and rating products for the circular economy. It evaluates products in five areas: material health, material reutilization, renewable energies, water management, and social justice. The FNxA 522i freezer with BluRoX technology is the result of over ten years of development and represents a sustainable future. The three core principles of C2C – water equals food, use renewable energy and celebrate diversity – define the design philosophy and help create closed, regenerative systems.



## Aerospace

# Liebherr supplies next-generation flight control computers to Airbus

Liebherr-Aerospace has been commissioned by Airbus to supply two new integrated next-generation flight control computers for the A320 family. These innovative devices, developed and manufactured at the sites in Lindenberg and Lindau in Germany, meet the highest safety standards and ensure greater operational reliability. They support future functions and help reduce pilot workload. The contract was secured thanks to Liebherr's clear focus on research and development of highly integrated solutions for high-performance and multicore control computers. Liebherr-Aerospace Lindenberg GmbH is Liebherr's centre of excellence for flight control systems, landing gear, gearboxes, electronics and software. Liebherr-Electronics and Drives GmbH is the specialist for developing and manufacturing electronic hardware. Together they provide the expertise in electronic systems for the flight control computers from a single source.



Liebherr Logistics USA, Co.

## Future-focused high-tech hub in Tupelo

Liebherr's logistics center in Tupelo, MS, marks a major investment in distribution across the Americas. The \$176 million investment will support six product segments and streamline operations like warehousing, kitting, and export services. The technology hub is expected to bring 180 new jobs by 2027. Built with Liebherr machines and sustainable design, the center spans 12 acres with room to grow. A fully automated intralogistics solution from SSI SCHAEFER will ensure efficient operations. This reinforces Liebherr's commitment to innovation, service excellence, and regional economic development.

## Mining

# Trolley power at Collahuasi

In July 2025, Liebherr Mining commissioned Chile's first operational trolley solution at the Collahuasi copper mine. This project also marked a significant milestone for Liebherr, representing the company's first complete delivery of a full trolley solution. The scope covered the engineering and manufacturing of the infrastructure, power system, and onboard truck hardware, on-site implementation and commissioning, and training and support for Collahuasi employees. Four Liebherr T 284 360-ton mining trucks are now operating under the 0.62-mile (1 km) trolley line. This achievement highlights Liebherr's commitment to sustainable mining and expanding its trolley technology footprint.



**LIEBHERR**

**#handsonliebherr**

