

Press release

Challenge – Saller’s Liebherr cranes complete difficult bridge hoist at night

- **LTM 1750-9.1 and LTM 1400/1 position 61-tonne pedestrian bridge using tandem hoist**
- **Cranes get within 20 centimetres of each other during hoist**
- **Full track closure requires smooth procedure during the night**

Kran Saller GmbH, based in Deggendorf in Bavaria, positioned a component for a pedestrian bridge over a railway track weighing over 60 tonnes using an extraordinary tandem hoist and a massive logistical effort. The difficulty was that the cranes had to be set up for the night job in Munich very close to each other and moved even closer whilst hoisting the load into position.

Ehingen / Donau (Germany), 13 August 2020 – It was really tight – there was only around twenty centimetres between the telescopic boom of the more powerful Liebherr mobile crane and the ropes on the telescope guying of the LTM 1400/1 when the cranes’ superstructures reached the trickiest moment of the complex slewing process . But this almost-contact had been precisely planned as such in advance. “Normally we would have hoisted the load with just one crane and an adjustable yoke, but the customer insisted that the work should be carried out using two cranes”, explained Klaus Ruhland, who completed the calculations for the tandem hoist together with Dennis Kase.

Because the LTM 1750-9.1 had to reach over the smaller crane and its boom to pick up the load, the massive nine-axle machine was set up with a 35 metre luffing jib and its telescopic boom was extended to almost 40 metres for the actual hoist. Managing Director and Head Project Manager Franz X. Saller jun. said: “The close positioning of the two cranes was due to the fact that we had to work from the abutment of a road bridge. We were not able to position the cranes on the bridge structure as a result of the support pressures they generate.”

A great deal of manpower and materials were required for the job because the full closure of the rail network for a limited time and the closure of the road for the hoisting and set-up work meant that rapid progress was essential.

But the efficient team from Kran Saller ensured that the work was carried out professionally and that the job was carried out quickly and smoothly during the night in the Bavarian capital. The actual hoisting of the bridge component took exactly one hour, after which it was positioned precisely around 30 metres away on the piers of the future bridge. Immediately after the load had been detached, the team started dismantling their Liebherr cranes so that as day broke, only a few barriers were left as signs that the night had been a busy one.

By then, the equipment for the job was already en route to the company's headquarters in Deggendorf. The company provides its services to customers well beyond the borders of Bavaria from there and six other sites. In addition to heavy and special haulage, the company has a fleet of around 30 cranes, making crane work one of the core parts of its business.

About Liebherr-Werk Ehingen GmbH

Liebherr-Werk Ehingen GmbH is a leading manufacturer of mobile and crawler cranes. Its range of mobile cranes extends from 2-axle 35 tonne cranes to heavy duty cranes with a lifting capacity of 1200 tonnes and a 9-axle chassis. Its lattice boom cranes on mobile or crawler crane chassis deliver lifting capacities of up to 3,000 tonnes. With universal boom systems and extensive additional equipment, they can be seen in action on construction sites throughout the world. The Ehingen site has a workforce of 3,500. Extensive, global service guarantees the high availability of Liebherr mobile and crawler cranes. In 2019, the Liebherr plant in Ehingen recorded a turnover of 2.1 billion euros.

About the Liebherr Group

The Liebherr Group is a family-run technology company with a highly diversified product portfolio. The company is not only one of the largest construction equipment manufacturers in the world, but also provides high-quality and user-oriented products and services in a wide range of other areas. The Liebherr Group includes over 140 companies across all continents, employs more than 48,000 staff and in 2019 achieved combined revenues of over 11.7 billion euros. Since its foundation in 1949 in Kirchdorf an der Iller in Southern Germany, Liebherr has been pursuing the goal of achieving continuous technological innovation, and bringing industry-leading solutions to its customers.

Images



liebherr-saller-motive1.jpg

Night shift – Kran-Saller used lots of equipment and manpower to hoist a component for a pedestrian bridge weighing 61 tonnes into place in Munich-Solln.



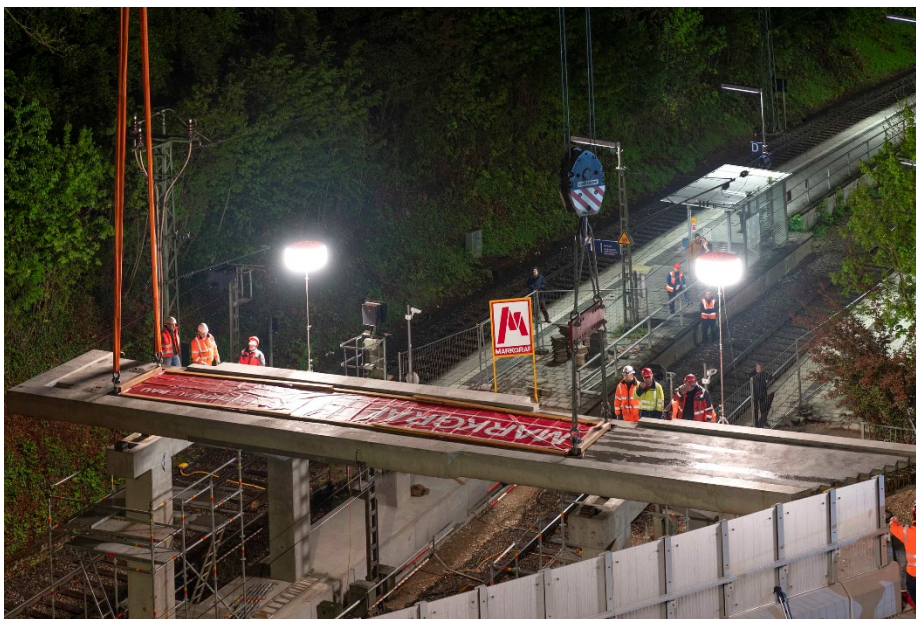
liebherr-saller-motive2.jpg

Far away – the 750 tonne mobile crane picked up the load from a distance of over 37 metres away and also had to reach over the LTM 1400/1.



liebherr-saller-motive3.jpg

Perfect planning – just like the simulations on the computer beforehand, the telescopic booms and ropes for the Y guying came very close to each other at times during the slewing process.



liebherr-saller-motive4.jpg

In position – the reinforced concrete component was placed on its piers at a distance of 30 metres over the closed rail track.



liebherr-saller-motive5.jpg

Away they go – two cranes, including an LTM 1250-5.1, place the load on a low loader.

Contact person

Wolfgang Beringer

Marketing and Communication

Phone: +49 7391 / 502 - 3663

Email: wolfgang.beringer@liebherr.com

Published by

Liebherr-Werk Ehingen GmbH

Ehingen (Donau) / Germany

www.liebherr.com