

Press release

Industrial tent structure moved on crane hooks

- Prangl relocated a large tent structure using three Liebherr mobile cranes – LTM 1200-5.1, LTM 1160-5.2 and LTM 1090-4.2
- VarioBase® and VarioBallast® enable cranes to work in narrow alley
- Crane job eliminated the need for one month of dismantling and erection work for the industrial tent structure

Tyrol, a popular destination for mountain and other hikers, was recently the scene of a very special trip – an industrial tent structure weighing over 40 tonnes and spanning an area of around 1,400 square metres “walked” around 100 metres in just a few hours. A large assembly hall was moved to its new location in several stages on the hook blocks of three LTM mobile cranes.

Ehingen / Donau (Germany), 14 August 2020 – “We have often relocated buildings, of course, but they have always only moved a few metres”, said Oliver Thum, project manager and crane expert in the technical external services department at Prangl at the start of this unusual job, “but we have never had to move one over such a long distance”. The job was to move a large industrial tent structure used by a woodworking company in Silz (Tyrol) several hundred metres and realign the whole thing.

It was rather tight for the cranes at the start of the job as two of the Liebherr machines had to work in a narrow alley next to the industrial tent structure. That is why Oliver Thum used an LTM 1160-5.2 and an LTM 1090-4.2 (both featuring VarioBase® and VarioBallast®), two of the newest members of the Prangl crane fleet. “Due to the lack of room, we needed the variable support and the smallest ballast radius during the slewing process here “, said Thum.

A total of eight hoists were required, with the large industrial tent structure being moved around 13 metres each time, and repositioned with a slightly different alignment. Oliver Thum directed his three crane operators, who completed each individual hoist carefully, showing outstanding teamwork. Finally, in the afternoon the job was finished and the industrial tent was safely positioned at its new location. As an alternative to the crane job, the customer had

considered dismantling and re-erecting the structure. However, the time required for this work would have been around one month for three or four fitters, leading the customer to decide on the faster relocation by crane.

About Liebherr-Werk Ehingen GmbH

Liebherr-Werk Ehingen GmbH is a leading manufacturer of mobile and crawler cranes. Its range of mobile cranes extends from 2-axle 35 tonne cranes to heavy duty cranes with a lifting capacity of 1200 tonnes and a 9-axle chassis. Its lattice boom cranes on mobile or crawler crane chassis deliver lifting capacities of up to 3,000 tonnes. With universal boom systems and extensive additional equipment, they can be seen in action on construction sites throughout the world. The Ehingen site has a workforce of 3,500. Extensive, global service guarantees the high availability of Liebherr mobile and crawler cranes. In 2019, the Liebherr plant in Ehingen recorded a turnover of 2.1 billion euros.

About the Liebherr Group

The Liebherr Group is a family-run technology company with a highly diversified product portfolio. The company is not only one of the largest construction equipment manufacturers in the world, but also provides high-quality and user-oriented products and services in a wide range of other areas. The Liebherr Group includes over 140 companies across all continents, employs more than 48,000 staff and in 2019 achieved combined revenues of over 11.7 billion euros. Since its foundation in 1949 in Kirchdorf an der Iller in Southern Germany, Liebherr has been pursuing the goal of achieving continuous technological innovation, and bringing industry-leading solutions to its customers.

Images



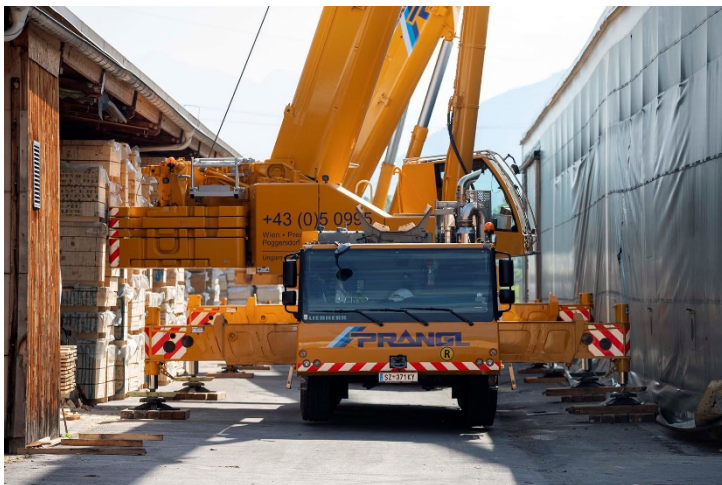
liebherr-prangl-motive1.jpg

In stages – the Prangl team moved the 65 metre industrial tent structure around 13 metres during each of the eight hoists.



liebherr-prangl-motive2.jpg

Tightly packed – there was very little space for the three mobile cranes to hoist the structure together – in the forefront you can see a Liebherr LTM 1200-5.1.



liebherr-prangl-motive3.jpg

Practical features – the variable support and the adjustable ballast radius enabled the cranes to operate in a very constricted space.



liebherr-prangl-motive4.jpg

Team Cool – Oliver Thum (in blue) with “his” three crane operators Alexander Besold, Erich Aldrian and Roland Kaltschmid (from left).

Contact person

Wolfgang Beringer

Marketing and Communication

Phone: +49 7391 / 502 - 3663

Email: wolfgang.beringer@liebherr.com

Published by

Liebherr-Werk Ehingen GmbH

Ehingen (Donau) / Germany

www.liebherr.com