

Press release

A new Liebherr crawler excavator: R 940 Demolition replaces R 944 C

- The LDC system (Liebherr Demolition Control) provides even more safety with the detection of the length of the installed equipment and tools
- Superb tool weights with greater ranges for enhanced productivity
- 30°-tiltable cab for optimal view of the working area

The Liebherr-France SAS development and production site launches a new machine on the global market: As a successor to the R 944 C, the R 940 Demolition complements the product range, which already includes the R 950 Demolition and the R 960 Demolition.

Colmar (France), 30 September 2020 – Liebherr benefits from more than 50 years of experience in the development and production of demolition excavators. These demolition excavators set new standards in terms of efficiency and profitability of the machines. Thanks to the wide range of models and equipment, the optimal combination is available for every application. With the R 940 Demolition, Liebherr complements its existing range of demolition excavators R 950 and R 960.

The Liebherr engine, which complies with exhaust emissions standard Stage V, reaches an output of 200 kW, features a diesel oxidation catalyst (DOC), SCR system, particulate filter and does not have an EGR valve, thus ensuring lower fuel consumption and higher productivity. This machine is also available in a Tier 4 Final version, as well as for less regulated markets with a corresponding engine.

Liebherr Demolition Control

The Liebherr Demolition Control System, which received the Intermat Innovation Award, shows the driver the position of the demolition tool, thus guaranteeing the stability of the excavator. In this way, it was possible to reduce to a minimum the probability of an operating error that could impair the stability of the machine. With the active safety components of the LDC, the driver has real time information in his field of vision on the tilt angle of the machine and the tool position. If a critical value is exceeded, the LDC automatically triggers electronic

range information. The safety system informs the driver about every movement of the equipment which could impact the stability of the excavator.

Equipment adapted to the application

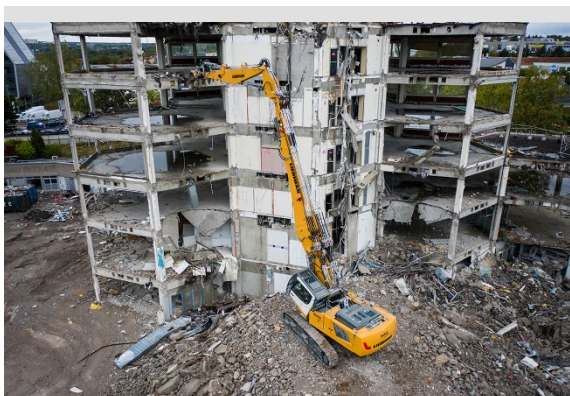
Like the other representatives in the range, the R 940 Demolition also features optimal properties for selective deconstruction. Apart from the Liebherr Demolition Control System (LDC), a 30°-tiltable cab ensures an optimal view of the working area. The hydraulically adjustable undercarriage with variable track gauge facilitates transport and the counterweight can be removed.

A cab air filtration system for a healthy work environment and a spray system for reducing dust in the working area are available as optional equipment for the R 940 Demolition crawler excavator. The machine can also be equipped with an air compressor for cleaning the radiator and cab.

About the Liebherr Group

The Liebherr Group is a family-run technology company with a very diversified product range. The company is one of the world's largest manufacturers of construction machines, but also offers high-quality, user-oriented products and services in many other areas. Today the Liebherr Group comprises more than 140 companies on all continents, employs more than 48,000 employees and in 2019 achieved a consolidated turnover of more than 11.7 billion euros. Since its foundation in 1949 in Kirchdorf an der Iller in southern Germany, Liebherr has been pursuing the goal of convincing its customers with sophisticated solutions and contributing to technological advances.

Photos



liebherr-r-940-demolition-1.jpg

A new Liebherr crawler excavator: R 940 Demolition replaces R 944 C.



liebherr-r-940-demolition-2.jpg

With the R 940 Demolition, Liebherr complements its existing range of demolition excavators R 950 and R 960.



liebherr-r-940-demolition-3.jpg

Like the other representatives in the range, the R 940 Demolition also features optimal properties for selective deconstruction.

Contact person

Alban Villaumé

Marketing Manager

Phone: +0033 89 21 36 09

E-mail: alban.villaume@liebherr.com

Published by

Liebherr-France SAS

Colmar / France

www.liebherr.com