

Press release

Liebherr adds LTR 1040 to its telescopic crawler crane series

- Unique performance and working range in the 40 tonne class
- Ideal for assembling prefabricated components
- The LTR 1040 is a lightweight version of the LTR 1060

Liebherr has followed the wishes of its customers and in future will be able to deliver a lightweight version of its 60 tonne LTR 1060 telescopic crawler crane in the form of the LTR 1040. As many projects and tenders call for telescopic crawler cranes in the 40 tonne class, Liebherr has extended its telescopic crawler crane portfolio downwards. Contractors can upgrade the LTR 1040 to make it into an LTR 1060 retrospectively if required.

Ehingen (Donau), (Germany), 11 May 2021 – The main difference to the LTR 1060 is the significantly reduced ballast – the LTR 1040 weighs in at a total of 20 tonnes less. 10 tonnes of central ballast have been taken off the chassis whilst a further 10 tonnes of counterweights have been removed from the slewing platform. This new crane model therefore delivers outstanding value for money in the 40 tonne class – its lifting capacities up to a medium radius significantly surpass those of its competitors and its 40 metre telescopic boom is around 30 percent longer than the standard in the class. This means that most crane jobs can be carried out without a folding jib.

Long, powerful telescopic boom

High lifting capacities are particularly important for assembling prefabricated components, one of the main areas of work for telescopic crawler cranes. For example, the LTR 1040 will hoist up to 8.6 tonnes with a radius of 10 metres throughout its entire 360° operating range. When it is fully raised, the lifting capacity of the 30.7 metre extended telescope is 18.8 tonnes and when fully extended, the 40 metre boom can hoist 10 tonnes. Using a 16 metre double folding jib, the LTR 1040 can achieve a maximum hoist height of 55 metres and can hoist a weight of 3.1 tonnes in this configuration. All of these are outstanding values, which are far above anything that has been achieved before in the 40 tonne class.

Economical transport, fast set-up times

The LTR 1040 can be transported particularly economically as it weighs just 43.5 tonnes, including its 5.6 tonnes of ballast. The axle loads for transport are less than 10 tonnes for a 3-axle tractor unit and a 4-axle semi low loader. By removing 5 tonnes of ballast, the LTR 1040's weight can be reduced to 38.5 tonnes, which means it has a gross transport weight of less than 60 tonnes.

The crawler travel gear is retracted to a width of 3.0 metres for transport. The low crane height of just 3.15 metres ensures that economical standard semi low loaders can be used.

Ideal for assembling prefabricated components

Its construction and design make the LTR 1040 ideal for assembling prefabricated components. With a 2.5 metre erection jib and a second hoist unit, it can also carry out work in 2-hook mode. The load absorbed with the erection jib by the low loader is transferred to the second hook on the telescopic boom. This means that prefabricated components can be rotated into the correct position and moved to the installation site on the crawler travel gear.

The LTR 1040 can hoist up to 17.7 tonnes with 4-line reeving of the hook block on the erection jib. The runner on the LTR 1040 can handle loads of up to 9 tonnes as it can also use a double reeving constellation.

High safety standards

Being able to travel with a full load on the hook is a major benefit of crawler cranes. To exploit this feature to the full, Liebherr provides lifting capacity tables for various ground inclines.

The fine gradation of up to 0.3, 0.7, 1.5, 2.5 and 4 degrees ensures perfect lifting capacities even on uneven site terrain types. On constricted sites, the LTR 1040 can also operate with its crawler tracks retracted to a width of 3 metres. Special lifting capacity tables are provided for this type of operation.

Liebherr has designed the access to the crane cab to be particularly safe and convenient. The crane operator can access his workplace in any slewing platform setting using folding ladders, a fixed platform on the crawler track and an extra-wide step on the cab. There is no need to climb over the crawler tracks and chains. This means that the LTR 1040 already meets the highest safety standards of the future which will come into force when the new EN13000 revision is enacted over the next few years.

About Liebherr-Werk Ehingen GmbH

Liebherr-Werk Ehingen GmbH is a leading manufacturer of mobile and crawler cranes. Its range of mobile cranes extends from 2-axle 35 tonne cranes to heavy duty cranes with a lifting capacity of 1200 tonnes and a 9-axle chassis. Its lattice boom cranes on mobile or crawler crane chassis deliver lifting capacities of up to 3000 tonnes. With universal boom systems and extensive additional equipment, they can be seen in action on construction sites throughout the world. The Ehingen site has a workforce of 3,500. Extensive, global service guarantees the high availability of Liebherr mobile and crawler cranes. In 2020, the Liebherr plant in Ehingen recorded a turnover of 2 billion euros.

About the Liebherr Group

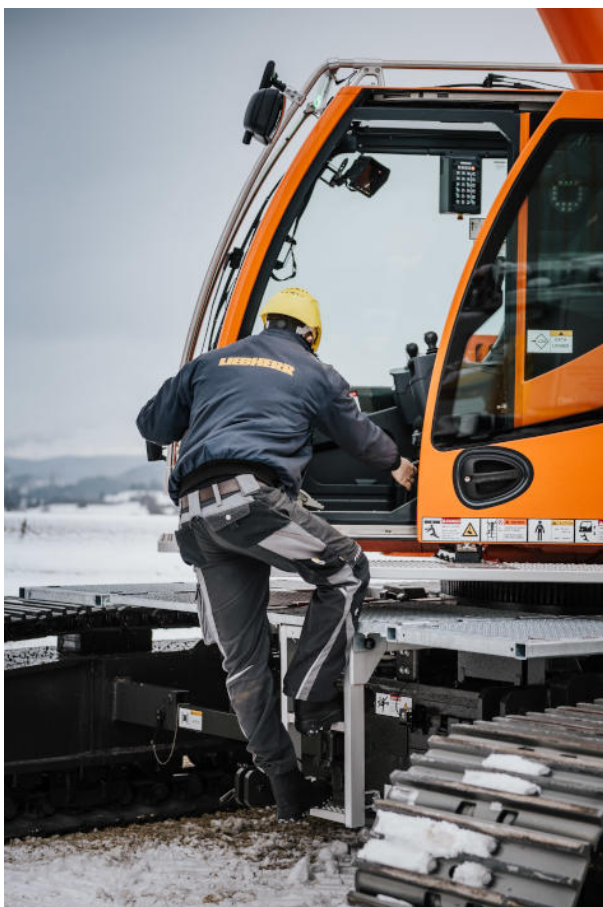
The Liebherr Group is a family-run technology company with a highly diversified product portfolio. The company is one of the largest construction equipment manufacturers in the world. It also provides high-quality and user-oriented products and services in a wide range of other areas. The Liebherr Group includes over 140 companies across all continents. In 2020, it employed around 48,000 staff and achieved combined revenues of over 10.3 billion euros. Liebherr was founded in Kirchdorf an der Iller in Southern Germany in 1949. Since then, the employees have been pursuing the goal of achieving continuous technological innovation, and bringing industry-leading solutions to its customers.

Photographs



liebherr-ltr1040.jpg

The LTR 1040 telescopic crawler crane has been added to the LTR series.



liebherr-ltr1040-access.jpg

Access to the crane cab is particularly safe and convenient.

Contact person

Wolfgang Beringer
Marketing and Communication
Phone: +49 7391/502-3663
Email: wolfgang.beringer@liebherr.com

Published by

Liebherr-Werk Ehingen GmbH
Ehingen (Donau) / Germany
www.liebherr.com