

News Release

Structural Unlimited's LR 1300.1 SX crawler crane provided high lifting capabilities for construction of the new CHKD Mental Healthcare facility parking garage

- **LR 1300.1 SX high load capacity was solution for long reach with heavy loads**
- **Equipment reliability, features and high performance were reasons for customer to use LR 1300.1 SX**
- **The Boom-Up and Down Assistance system made for easier handling during lifts**

Newport News, VA (USA), May 20, 2021 – Structural Unlimited, LLC was subcontracted to install pre-cast double tee's and wall panels to erect a parking garage for the new Children's Hospital of the King's Daughters (CHKD) mental healthcare facility located in Norfolk, Virginia.

CHKD officials along with Virginia Governor Ralph Northam, state and local officials and W.M. Jordan Company broke ground on the brand new mental healthcare facility in Norfolk, Virginia in September 2019. The impressive new \$224 million facility will be a 14-story, 60 bed facility that will offer the highest level of care, standing out among some of the nation's top pediatric mental health hospitals, with innovative patient- and family-centered design, research-based treatments, academic training programs for the next generation of child psychiatrists, and unparalleled support and community involvement, according to a [CHKD press release](#).

The facility will provide in-patient and outpatient services and will feature an indoor and outdoor recreation area and expressive creativity center for individual and group therapy. The new hospital also includes a rooftop recreation center and healing garden, providing a safe and secure area for patients to connect with nature and enjoy fresh air. The new hospital will be an addition to the current CHKD and Sentara Norfolk General complex and is scheduled to open in 2022.

Structural Unlimited LLC was tasked with constructing the parking garage structure for the new CHKD Mental Healthcare facility located on Gresham Drive. The first floor of the parking garage is 19 ft. 10.5 inches high to accommodate ambulance needs going to the facility.

Structural Unlimited, LLC used one of their 330 ton Liebherr [LR 1300.1 SX](#) crawler cranes fitted with carbon fiber pendants to lift and set concrete wall panels in place for each level of the parking garage. The construction of the nine story parking garage began in January 2021 and was completed April 2021. The LR 1300 operated up to 12 hours a day handling the precast wall panels that weighed between 50,000 to 90,000 lbs. Each panel was lifted and placed side by side and then welded together.

The LR 1300.1 SX crawler crane has a lifting capacity of 330 ton with a possible hoist height of up to 664 ft. For special lifts, where a higher load chart is required, a super lift attachment can be attached. The crawler cranes high horsepower engine provides plenty power for simultaneous movements of swing, main boom and luffing jib without slowing down, which makes jobsite operations like steel hanging very fast. Furthermore the machine is designed to quickly assemble and disassemble. “We quite often disassemble, move and assemble a LR 1300.1 SX within the same day,” mentioned Andy Merrell, owner of Structural Unlimited LLC.

The LR 1300.1 SX is used in various applications such as steel erection, pre-cast and infrastructure work. The LR 1300.1 SX was the best solution for the CHKD parking garage project because of the cranes ability to make a pick-up of 90,000 lbs. at 110 feet outreach. The LR 1300.1 SX’s outstanding load chart proved to be an advantage.

Additionally, there are many innovative optional equipment features available for the LR 1300.1 SX. One of those features is the new Boom-up and down assistance system which increases operational safety during assembly and disassembly. This assistance system indicates the approach to the tipping point and automatically stops operation before the operator unintentionally enters an unsafe zone. It also takes the machine’s configuration as well as wind into consideration.

At this specific job site, Structural Unlimited was faced with the challenge of making sure the luffing jib tip remained underneath the Liebherr tower crane working on the same jobsite. The LR 1300.1 SX was equipped with 95 ft. of main boom and 125ft of luffing jib. The LR 1300.1 SX

luffing jib can also be outfitted with a 3-part/99,210 lbs. aux. jib/rooster which on this particular jobsite Structural Unlimited did not require.

Andy Merrell, owner of Structural Unlimited LLC said, "Liebherr's reputation for developing reliable, high performing products were part of my decision to purchase Liebherr LR 1300's." Structural Unlimited LLC currently owns four Liebherr LR 1300.1 SX, all equipped with carbon fiber pendants for increased capacity and operates them in the southeast United States. Structural Unlimited LLC was founded in 2009 and is based out of Huntersville, North Carolina.

About the Liebherr in the United States

Liebherr in the United States, headquartered in Newport News, Virginia, has been manufacturing in the United States since 1970. The company is celebrating 50 years as a leading North American provider of construction equipment and other technically advanced and user-oriented products and services. The continued success of the company lies in the teamwork and dedication of approximately 46,000 employees worldwide and over 1,300 in the U.S. Liebherr provides many opportunities in diverse roles and industries, including engineering, manufacturing, sales, service and more. Liebherr products are sold and distributed throughout the United States through Liebherr's own branches and through an independent distribution network. The manufacturer offers a vast range of solutions in product divisions including Aerospace and Transportation Systems, Components, Concrete Technology, Domestic Appliances, Gear Technology and Automation Systems, Earthmoving Equipment, Maritime Cranes, Mining, Mobile Cranes and Tower Cranes. In 2020, the company proudly expands the Newport News Campus and opens the new Liebherr USA, Co. Headquarters, continuing its long-term investment and commitment to the U.S. market.

About the Liebherr Group

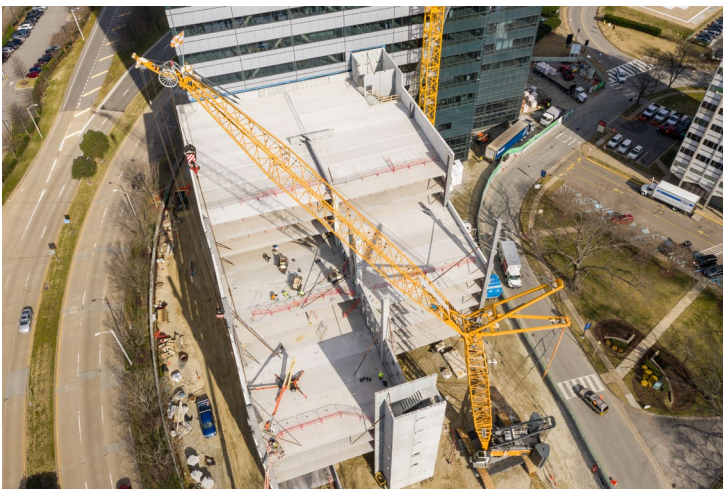
The Liebherr Group is a family-run technology company with a highly diversified product portfolio. The company is not only one of the largest construction equipment manufacturers in the world, but also provides high-quality and user-oriented products and services in a wide range of other areas. The Liebherr Group includes over 140 companies across all continents, employs more than 48,000 staff and in 2019 achieved combined revenues of over 11.7 billion euros. Since its foundation in 1949 in Kirchdorf an der Iller in Southern Germany, Liebherr has been pursuing the goal of achieving continuous technological innovation, and bringing industry-leading solutions to its customers.

Images



Caption: Structural Unlimited LLC's LR 1300.1 SX hoisting a precast double tee beam during the construction of the new CHKD Mental Healthcare facility parking garage

Filename: Liebherr_LR1300 Crawler_CHKD_vertical working.jpg



Caption 2: Aerial view of the LR 1300.1 SX after placing concrete wall panels weighing between 50,000 to 90,000 lbs. to construct the new CHKD Mental Healthcare facility parking garage

Filename: Liebherr_LR1300 Crawler_CHKD_Overhead Aerial.jpg



Caption 3: View of the new CHKD Mental Healthcare facility jobsite scheduled to open in 2022

Filename: Liebherr_LR1300 Crawler_CHKD_jobsite aerial.jpg

Contact person

Ana Cabiedes

General Manager, Marketing

Tel: 757-240-4250

E-Mail: ana.cabiedes@liebherr.com

Published by

Liebherr USA, Co.

Newport News, VA / USA

www.liebherr.com