

Press release

## **Liebherr Container Cranes Ltd. strengthens North American sales and service through closer integration with local Liebherr companies**

- **Liebherr USA Co. and Liebherr-Canada Ltd. formalise sales and service set-up with Liebherr Container Cranes Ltd.**
- **Improved service and support for Liebherr customers**

Killarney (Ireland), March 2021– Liebherr Container Cranes, a part of the Liebherr Maritime Cranes division has strengthened its sales and service presence in North America.

Liebherr divisions such as Construction and Earthmoving utilise the worldwide Liebherr network of sales and service companies to provide sales and service to its customers. Liebherr Container Cranes has traditionally managed sales and service from its base in Ireland. Now, as part of a programme of localised customer care, Liebherr Container Cranes has formalised its sales and service presence via Liebherr USA Co. and Liebherr-Canada Ltd.

The enhanced presence means that customers will benefit from closer and more personal support through a localised approach to sales and service. Liebherr Container Cranes will provide expert advice from their facility in Ireland, but day to day customer support and spare part supply will be coordinated from Liebherr Canada and Liebherr USA.

Explaining further, David Griffin, Managing Director – Sales at Liebherr Container Cranes said, “Liebherr USA and Liebherr Canada are very successful and advanced Liebherr sales and service companies with well-established teams for our maritime business. It makes absolute sense for us to be closer to our North American client base with local personnel and resourcing. The factory in Killarney, Ireland is very excited about this huge advantage we can offer to our existing and potential customers in both the USA and Canada. Moves like this will

---

allow us to ramp up in other respects at the factory, increase customer satisfaction and continue our long-term growth strategy.”

Liebherr Container Cranes has a long tradition of crane supply to North America with one of the first Liebherr ship to shore container cranes supplied to Montreal in 1973. Since then Liebherr has continued to supply ship to shore and container stacking cranes to its customers in the US and Canada.

---

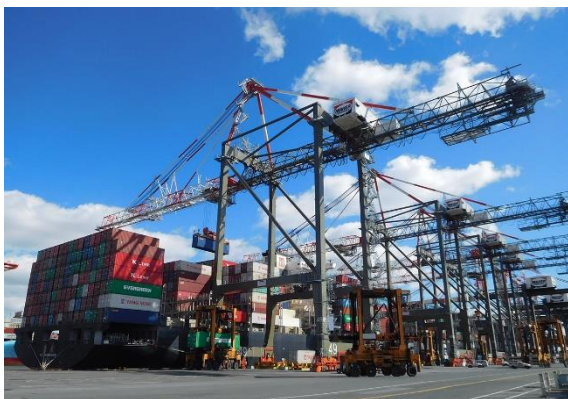
### **About Liebherr Container Cranes Ltd.**

Liebherr Container Cranes Ltd. Is one of the world's leading manufacturers of ship to shore container cranes, rail-mounted gantry cranes and rubber tyre gantry cranes. From a base in Killarney, Ireland, Liebherr Container Cranes Ltd designs, builds and exports container cranes worldwide. Founded in 1958 as the first Liebherr factory outside of Germany, today, container cranes manufactured by Liebherr in Ireland are renowned for their quality, longevity and productivity.

### **About the Liebherr Group**

The Liebherr Group is a family-run technology company with a highly diversified product portfolio. The company is not only one of the largest construction equipment manufacturers in the world, but also provides high quality and user-oriented products and services in a wide range of other areas. The Liebherr Group includes over 140 companies across all continents, employs more than 48,000 staff and in 2019 achieved combined revenues of over 11.7 billion euros. Since its foundation in 1949 in Kirchdorf an der Iller in Southern Germany, Liebherr has been pursuing the goal of achieving continuous technological innovation, and bringing industry-leading solutions to its customers.

### **Images**



Liebherr-usa.jpg

Liebherr ship to shore container cranes at the Port of New York and New Jersey



liebherr-canada.jpg

Liebherr rubber tyre gantry cranes and ship to shore container cranes at the Port of Montreal

---

**Contact person**

Trevor O'Donoghue

Marketing Manager

Telephone: +353 (0)64 6680459

E-Mail: [trevor.odonoghue@liebherr.com](mailto:trevor.odonoghue@liebherr.com)

**Published by**

Liebherr Container Cranes

Killarney / Ireland

[www.liebherr.com](http://www.liebherr.com)