

Press Release

First Generation 8 R 926 excavator in Belgium

- **Decision in favour of the quality and reliability of Liebherr machines**
- **R 926 G8 – the combination of power and versatility**
- **The Timo-Tuin family business: 30 years in the service of the customer**

The Timo-Tuin company has purchased a latest-generation Liebherr machine to carry out various earthmoving operations. In doing so, the company has opted for the performance, low fuel consumption and comfort of the Liebherr R 926 G8 crawler excavator. The first of this type in Belgium.

Poperinge (Belgium), 26th January 2021 – "With its great versatility and optimum performance, the R 926 G8 fully meets our needs," says Sandrino Timperman, son of company founder Timo Tuin, summing up his decision in favour of the R 926.

Decision in favour of the quality and reliability of Liebherr machines

The most important criteria for the company are the quality and reliability of the product. The excavator has now completed 215 operating hours and the customer is very satisfied with it. Liebherr customer service was the second criterion for Timo-Tuin. Here, the Belgian company can count on the reaction speed of the local Liebherr dealer SOMTP Belgium when needed.

The customer is particularly impressed by the excavator's economic efficiency: The average fuel consumption of the R 926 is less than 13 litres. Timo-Tuin is increasingly working on urban construction sites and in the vicinity of residential buildings, which is why the company is paying more attention to the environment.

The R 926 G8 combines power and versatility

The power and speed of the machines are also important to the Belgian company. The Generation 8 R 926 crawler excavator is powerful and meets all requirements. Equipped with a hydraulic quick-coupler as well as hydraulic lines for the hydraulic breaker and the sorting grapple, the excavator is currently laying pipelines for the water network of a residential area

in Veurne, Belgium. The excavation forces, the traction of the undercarriage and the torque of the upper carriage have been increased in comparison to the previous generation. These improvements increase the overall excavator performance in every application.

In addition to the machine's performance and stability, the operator also appreciates the comfort and quietness in the cab. Here they have a spacious and air-conditioned work area. To facilitate daily work, the cab is equipped with a pneumatic seat with height and longitudinal damping and an easy-to-use, high-resolution 7-inch colour touchscreen.

The R 926 is the outcome of Generation 8, which has been completely redesigned to improve comfort, safety, ergonomics and operating performance. Seven models ranging from 22 to 45 tonnes were presented at Bauma 2019 in Munich.

About Timo-Tuin

The Belgian company was founded in Poperinge in 1990 by Jean-Marie Timperman, Annie Denblyden and their son Sandrino. Timo-Tuin currently employs 15 people and is active in the fields of wastewater disposal, road networks and environmental work. Various public and private construction clients rely on Timo-Tuin for the careful and smooth execution of construction work.

About the Liebherr Group

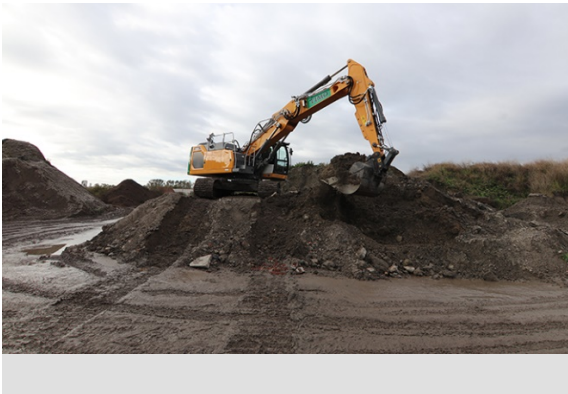
The Liebherr Group is a family owned technology company with a broadly diversified product range. The company is not only one of the world's leading manufacturers of construction machinery, but also offers high-quality, value-added products and services in many other areas. The group, which today is made up of more than 140 companies on all continents, employs more than 48,000 people and in 2019 generated consolidated sales of more than 11.7 billion euros. Since Liebherr was founded in Kirchdorf an der Iller in southern Germany in 1949, the company has pursued the declared goal of inspiring its customers with outstanding solutions and contributing to technological progress.

Images



liebherr-r926-timo-tuin-1.jpg

The R 926 is the outcome of Generation 8, which has been completely redesigned to improve comfort, safety, ergonomics and operating performance.



liebherr-r926-timo-tuin-2.jpg

The average fuel consumption of the R 926 is less than 13 litres.

Contact

Alban Villaumé
Marketing & Communication
Telephone: +333 89 21 36 09
E-mail: alban.villaume@liebherr.com

Published by

Liebherr-France SAS
Colmar, France
www.liebherr.com