

Press release

First LPS 600 in Germany boosts logistics for J. MÜLLER

- The Liebherr portal slewing crane of type LPS 600, the first of its kind in Germany, is set to enhance bulk and general cargo operations at the port of Brake, which handles 1,924 ship calls and 7.1 million metric tonnes of a wide range of goods annually on the water side
- J. MÜLLER Weser GmbH & Co. KG, founded in 1821, is Northern Germany's leading provider of seaport logistics for agricultural, bulk and mass-produced goods
- This project marks the first rail-mounted portal crane at the port of Brake, designed for an extended 650-metre travel path in one direction, with unique features like larger cable drum, video monitoring at the portal, and much more

The LPS 600 features a 61-metre boom, a motorised grab control and an e-drive that ensures optimal handling performance. The crane is designed for a total travel distance of 650 metres in one direction and therefore has an extra-large cable drum. A curve-going chassis with various pivot points has also been installed so that the crane can travel on winding roads and thus reach more areas of the harbour effectively. Special seals on the wheels have been installed as flood protection. The seaport of Brake is located 26 kilometres upstream from the Weser delta. It has modern transshipment facilities, silo facilities and warehouses along a 2.5-kilometre-long quay and a total of seven berths for large ships.

Rostock (Germany), October 2024 – In order to remain ahead of its time, J. MÜLLER Weser GmbH & Co. KG has received the first LPS 600 in Germany, setting a new standard in cargo handling logistics at the port of Brake. The crane meets all the requirements for handling the wide range of bulk goods and dry bulk that are handled in large quantities at the port of Brake. It is equipped with advanced functions such as an electric drive, a motorised grab and much more, and is designed to increase the efficiency of bulk and general cargo handling in the port. The use of a largely closed grab reduces emissions when handling dusty dry bulk such as grain and animal feed. Under ideal conditions, up to 1,000 tonnes of dry bulk can be handled per hour. The crane can also be used to efficiently handle unitised cargo such as pulp, timber, steel, wind turbines and project cargo. The crane's reach also allows direct ship-to-ship handling. These factors help to maintain and further expand the port's economic importance for the region.

The next chapter in over 200 years of port services

The LPS 600 is designed to meet the high, specialised demands of bulk and dry bulk handling, offering reliable performance and increased productivity. The e-drive reduces CO2 emissions and energy costs, meeting J. MÜLLER's environmental and economic sustainability requirements. In addition, the new cab of the LPS 600 improves operator comfort and safety and reflects the company's commitment to social responsibility.

J. MÜLLER was founded in 1821 and has been family-owned ever since. The company operates its own seaport terminals in Brake and Bremen for the transshipment and seaport logistics of dry bulk and breakbulk of various sizes. The storage capacity in Brake is around 1.2 million tonnes, including up to 600,000 tonnes of bulk goods in silos and warehouses and a further 600,000 tonnes of general cargo in covered and open storage areas. The company has the largest continuous silo facility in Europe and can unload 20,000 tonnes of agricultural goods every day.

“Our investment in the LPS 600 will significantly improve our handling performance for dry bulk materials such as grain, feed, scrap, minerals, and for general cargo such as iron and steel, project cargo, wind turbines, wood, and pulp. The aim is to ensure smoother and more efficient operation and ultimately to increase throughput,” says Jens Ripken, Managing Director of J. MÜLLER Weser GmbH. “We are confident that this crane will not only meet our current requirements, but will also support our future growth and expansion plans while meeting our sustainability goals. Liebherr’s commitment to innovation and customer satisfaction is evident in every aspect of this project.”

The LPS 600 is the first rail-mounted portal crane in the port of Brake. The crane’s special features include an oversized cable drum and a curved chassis with various pivot points and special seals on the wheels, which ensure improved mobility and better flood protection. Other special features include customised painting in the J. MÜLLER corporate design and video monitoring at the portal, which is not part of the standard equipment.

Liebherr’s commitment to innovation and service

The teams from both companies, including technical and operational experts as well as experienced crane operators, worked closely together to ensure that the crane meets the specific requirements of the seaport of Brake. The result of this successful collaboration is a crane that is not only the most powerful of its kind in Germany, but is also perfectly tailored to the needs of the port. “We are proud to deliver the LPS 600 to J. MÜLLER. This crane is an example of our commitment to innovation and customer satisfaction,” says Eric Hein, Sales Manager at Liebherr Rostock.

From its early days to its current position as a leading company in maritime logistics, J. MÜLLER has always sought innovative ways forward. This latest expansion is another milestone on this journey and paves the way for future success.

About J. MÜLLER Weser GmbH & Co. KG

The J. MÜLLER group specialises in the operation of seaport terminals and associated port and shipping-related services. The regional focus is on northern Germany, in particular the Lower Weser region, where the group operates its own seaport terminals in Brake and Bremen. The medium-sized family business, now in its sixth generation, was founded in 1821 in Brake and has the largest connected silo facility in Europe at its location in Brake.

J. MÜLLER is a reliable partner for handling, storage and processing a wide range of agricultural goods. J. MÜLLER is also a leader on the German North Sea coast when it comes to general cargo. Whether it’s pulp and sawn timber, iron and steel or even complete wind power and industrial plants. With its state-of-the-art handling and storage facilities, extensive space and specialised equipment, J. MÜLLER is optimally equipped for the fast and efficient movement of all breakbulk goods. Spacious, multifunctional warehouses also enable quayside storage that is close to the port and not dependent on the weather.

J. MÜLLER has its own fleet of inland waterway vessels and operates joint venture companies with renowned partners in the areas of truck logistics (B-LOG) and European inland waterway shipping (MÜLLER & Oorburg Logistics). The group's operating business is carried out by J.MÜLLER Weser GmbH & Co. KG. The company currently employs 554 people at its locations in Brake and Bremen, including 41 apprentices (as of 06/2024).

Cargo handling and freighting services in 2023 at the Brake and Bremen locations:

- 6.3 million tonnes of general and bulk cargo
- Annual turnover in 2023: approx. 150 million euros

About Liebherr-MCCtec Rostock GmbH

Liebherr-MCCtec Rostock GmbH is one of the leading European manufacturers of maritime handling solutions. The product range includes ship, mobile harbour and offshore cranes. Reach stackers and components for container cranes are also included in the product portfolio.

About the Liebherr Group – 75 years of moving forward

The Liebherr Group is a family-run technology company with a highly diversified product programme. The company is one of the largest construction equipment manufacturers in the world. It also provides high-quality, user-oriented products and services in a wide range of other areas. The Liebherr Group includes over 150 companies across all continents. In 2023, it employed more than 50,000 staff and achieved combined revenues of over 14 billion euros. Liebherr was founded by Hans Liebherr in 1949 in the southern German town of Kirchdorf an der Iller. Since then, the employees have been pursuing the goal of achieving continuous technological innovation, and bringing industry-leading solutions to its customers. Under the slogan '75 years of moving forward', the Group celebrates its 75th anniversary in 2024.

Images



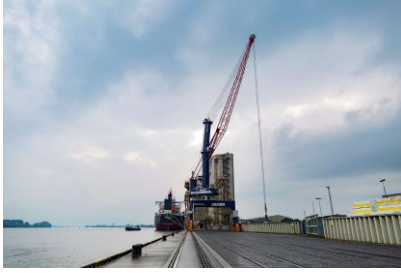
liebherr-lps-600-j-mueller-1.jpg

Brake Port, handling over seven million tonnes of cargo annually, has just welcomed the LPS 600. This new addition will streamline the handling of grain, animal feed, and pulp, and general cargo like wood boards and scrap metal, significantly boosting operational efficiency.



liebherr-lps-600-j-mueller-2.jpg

Recently delivered aboard MV Jubilee, the LPS 600 is now undergoing commissioning at Brake Port. It is set up for a 650-metre travel path in one direction and includes specialized flood protection.



liebherr-lps-600-j-mueller-3.jpg

With its impressive 61-metre boom and dual 72-tonne winches, the LPS 600 will strengthen logistical capacity at Brake Port. The crane's motorised grab control and performant e-drive ensure optimal load handling, enhancing overall efficiency. PHOTO CREDIT: Vusal Ahmadli

Contact

Mathias Haugner
Marketing Manager – Maritime Cranes
Phone: +49 38160 / 0650 - 36
E-Mail: mathias.haugner@liebherr.com

Published by

Liebherr-MCCtec Rostock GmbH
Rostock / Germany
www.liebherr.com