

Press release

## **90 metre telescopic boom: Weise strengthens its crane fleet with LTM 1300-6.3**

---

- The LTM 1300-6.3 is now the most powerful crane in the fleet
- 90 metre telescopic boom saves transport and assembly time
- Long term partnership with Liebherr

Schwerlast Weise GmbH has taken delivery of a new Liebherr LTM 1300-6.3 mobile crane. The 300-tonne crane strengthens the fleet of the Thuringian crane and logistics company, which will be celebrating its 35th anniversary next year. An important decision criterion was the 6-axle mobile crane's 90-metre telescopic boom, which enables the assembly of construction cranes and electricity pylons without lattice jibs, for example.

Ehingen (Donau) (Germany), 18 November 2024 - "With the LTM 1300-6.3, we have opted for a versatile, economical and unrivalled fast-erecting crane from Liebherr, and have done so on the background of what is currently a rather negative economic situation in Germany," reports Senior Managing Director Hermann Weise. Son-in-law Walter Weise-Kahlert, who has been working for the company since 2012 and has also been Managing Director since January 2024, adds: "The LTM 1300-6.3 has an extremely long telescopic boom at 90 metres. This has great advantages for the assembly and dismantling of tower cranes and electricity pylons, as we do not have to transport and assemble any folding jibs or lattice extensions on the new 300-tonner. So we save time and money."

### **Record-breaking boom**

Liebherr set a new world record with the launch of the LTM 1300-6.3 around two years ago: never before has a mobile crane been able to carry a 90 metre telescopic boom with an axle load of just 12 tonnes. The record length of 90 metres is achieved by the new LTM 1300-6.3 using an 8-section telescopic boom. That is one section more than similar cranes in this class. Liebherr has optimised the entire steel structure of the crane for lightweight construction in order to be able to carry the complete boom as well as all the sliding beams and a hook block with a 12 tonne axle load on public roads.

The new LTM 1300-6.3 is now the largest mobile crane in Weise's fleet. It replaces an LTM 1250-5.1 there. The assembly of construction cranes will be one of the main tasks of the new 300-tonne crane. Weise itself operates a large fleet of construction cranes. However, the crane will also carry out this work for other tower crane operators. Weise also sees another important area of application in the assembly and dismantling of electricity pylons. These are essential for the energy supply from north to south. Completely new power lines are being built or smaller pylons are being replaced by larger ones. "The

versatile customised solutions of the LTM 1300-6.3 naturally also increase the possibilities for exchanging capacity with business partners from our industry," says Walter Weise Kahlert.

## **Proven prowess in its very first job**

Weise sent his new crane directly from the Liebherr manufacturing plant in Ehingen to the first construction site in Erfurt, the state capital of Thuringia. Its task was to erect a construction crane from the company's own fleet. The telescopic boom was extended to 69.2 metres and the slewing platform was equipped with 68 tonnes of ballast in order to assemble the heaviest part weighing ten tonnes at a radius of 36 metres. Walter Weise-Kahlert reports: "The crane operator and our construction crane fitters are very satisfied and impressed with the crane after its first use and are already looking forward to new tasks and projects with this piece of equipment."

Hermann Weise founded the company in September 1990, initially as a mobile crane hire company. Construction cranes and lorry loading cranes were added later. Machine transport and industrial removals are now also part of the portfolio. The Weise Group, headquartered at Hermsdorfer Kreuz, currently employs around 60 people. They organise the use of 22 mobile and mobile construction cranes, around 100 construction cranes, eight truck-mounted loader cranes and various other transport units. Hermann Weise explains: "With this fleet, we are well positioned and a competent and reliable partner in our region. We have been working very productively with Liebherr for many years. You could almost describe it as a family relationship. The service is excellent."

## **About Liebherr-Werk Ehingen GmbH**

Liebherr-Werk Ehingen GmbH is a leading manufacturer of mobile and crawler cranes. Its range of mobile cranes extends from 2-axle 35 tonne cranes to heavy duty cranes with a lifting capacity of 1200 tonnes and a 9-axle chassis. Its lattice boom cranes on mobile or crawler travel gear deliver lifting capacities of up to 3000 tonnes. With universal boom systems and extensive additional equipment, they can be seen in action on construction sites throughout the world. The Ehingen site has a workforce of 5,000. An extensive, global service network guarantees the high availability of Liebherr mobile and crawler cranes. In 2023, the Liebherr plant in Ehingen recorded a turnover of 2.81 billion euros.

## **About the Liebherr Group – 75 years of moving forward**

The Liebherr Group is a family-run technology company with a highly diversified product programme. The company is one of the largest construction equipment manufacturers in the world. It also provides high-quality, user-oriented products and services in a wide range of other areas. The Liebherr Group includes over 150 companies across all continents. In 2023, it employed more than 50,000 staff and achieved combined revenues of over 14 billion euros. Liebherr was founded by Hans Liebherr in 1949 in the southern German town of Kirchdorf an der Iller. Since then, the employees have been pursuing the goal of achieving continuous technological innovation, and bringing industry-leading solutions to its customers. Under the slogan '75 years of moving forward', the Group celebrates its 75th anniversary in 2024.

## Images



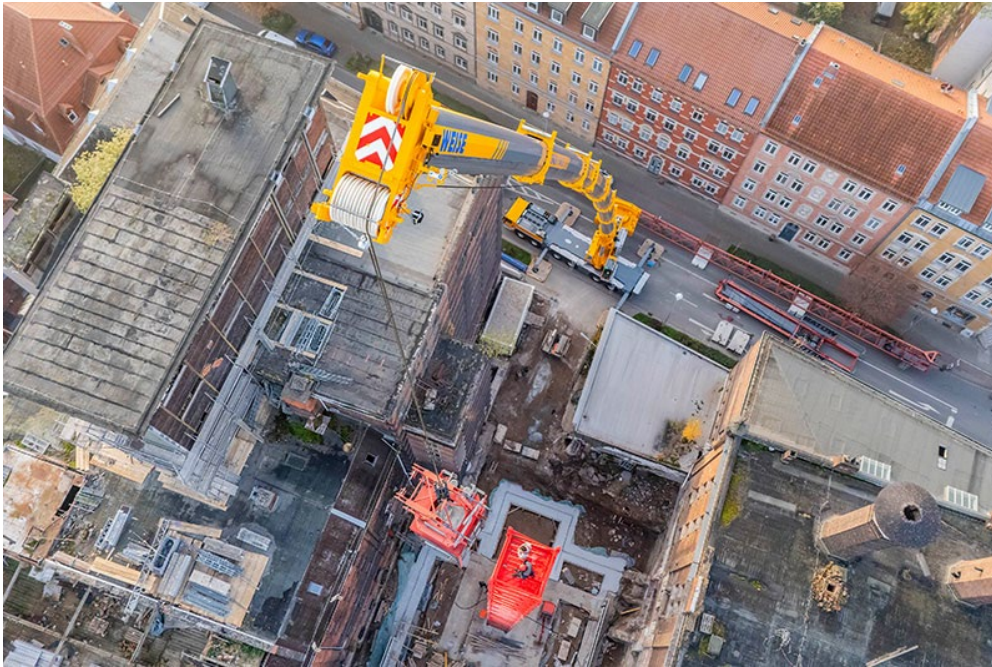
liebherr-ltm1300-6.3-weise-handover.jpg

Crane handover to three Weise generations in Mörsdorf: (from left to right) Sven Bahms (Liebherr-Werk Ehingen GmbH), Walter Weise-Kahlert, Anja Weise, Roswitha Weise and Hermann Weise, with Klara and Anna Weise in front (all Schwerlast Weise GmbH)



liebherr-ltm1300-6.3-weise-01.jpg

In Erfurt, the new LTM 1300-6.3 from Weise proves its worth in its first job assembling a construction crane.



liebherr-ltm1300-6.3-weise-02.jpg

The 90 metre telescopic boom is extended to 69.2 metres. 68 tonnes of ballast are needed to assemble the heaviest part to a radius of 36 metres.

## Contact

Wolfgang Beringer  
Marketing and Communication  
Phone: +49 7391 / 502-0  
E-mail: [wolfgang.beringer@liebherr.com](mailto:wolfgang.beringer@liebherr.com)

## Published by

Liebherr-Werk Ehingen GmbH  
Ehingen (Donau) / Germany  
[www.liebherr.com](http://www.liebherr.com)