

Press release

Liebherr at Demolition New Orleans, March 5-8, 2025

- Liebherr is the premier sponsor of the Live DEMOLition Event™ at NDA's Annual Convention and Expo.
- Liebherr showcases purpose-built demolition excavators and provides hands-on experience to participants at Demolitions New Orleans.

Liebherr's earthmoving and material handling technology team exhibits at NDA's annual Convention and Expo in March 2025 showcasing the R 938, R 934 and R 945 crawler excavators and the LH 22 M material handler. Attendees will also be able to get hands-on with these machines at the Live DEMOLition Event™ and Operators Challenge.

Newport News, VA (USA), Liebherr USA, Co, January 23, 2025 –NDA's annual Convention and Expo takes place in New Orleans, Louisiana from March 5-8, 2025. Liebherr USA, Co. showcases the [R 938](#), [R 934](#) and [R 945](#) crawler excavators and the [LH 22 M](#) material handler for attendees to operate outside. Liebherr also has multiple product experts on-site at booth #621.

Liebherr USA, Co. has served as the premier sponsor of the Live DEMOLition Event™ for more than 5 years, providing attendees, a unique hands-on experience to test on-site equipment in real world applications. This live demo also includes an Operators Challenge to test operators' skill and knowledge of the equipment including our R 938 crawler excavator.

Liebherr crawler excavators: R 938, R 934 & R 945

Offering a wide range of crawler excavators, Liebherr is one of the major players in the manufacturing of equipment for special applications including demolition, tunnel construction or handling as well as other industry specific needs. Designed using over 60 years of experience to meet the demands of the industry and the specific needs of our customers, Liebherr crawler excavators prioritize performance, reliability and efficiency in addition to safety and comfort for the operator.

Liebherr's state-of-the-art Generation 8 crawler excavators provide operators with higher bucket capacities, optimized fuel consumption and higher engine power. These new machines have been completely revamped to better serve customer needs such as the new R 938 crawler excavator, replacing the previous R 946 at an operating weight of approximately 86,000 lbs. To provide more options for our customers, the

new R 934 weighs approximately 78,500 lbs. and is positioned between two existing models, the R 930 and the R 945. The R 945 is a new option for the 90,000 lbs. class range. In addition to improved engine power, the Generation 8 crawler excavators are equipped with a boom concept with a modified head, providing operators with an optimized load curve leading to better fuel savings on site.

Liebherr material handlers: LH 22 M

Liebherr has been designing and manufacturing successful machines for material handling for over 60 years. With the different versions of the LH 22 Industry machine model of the generation of Liebherr handlers, high performance and yet economical machines specially designed for use in demolition applications. The optimized design of the 141 HP engine supplies a high torque output for fast and strong movements. Load peaks are cleverly compensated for to ensure that maximum torque is available at all times for highest handling capacity.

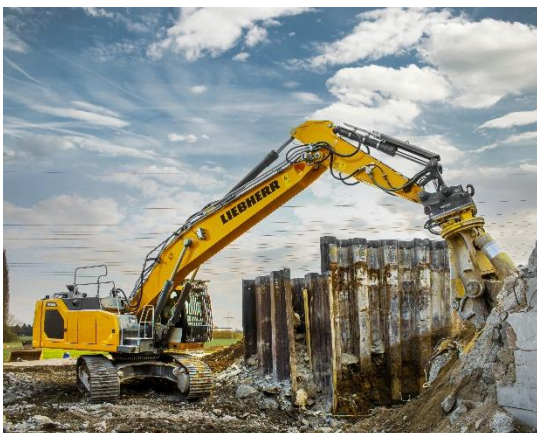
About Liebherr USA, Co.

[Liebherr USA, Co.](#) based in Newport News, VA provides sales and service on behalf of ten different Liebherr product segments: earthmoving, material handling, mining, mobile and crawler cranes, tower cranes, concrete technology, deep foundation machines, maritime cranes; components, and refrigeration and freezing.

About the Liebherr Group – 75 years of moving forward

The [Liebherr Group](#) is a family-run technology company with a highly diversified product portfolio. The company is one of the largest manufacturers of construction equipment in the world. It also provides high-quality, user-oriented products and services in a wide range of other areas. The Liebherr Group includes over 150 companies across all continents. In 2023, it employed more than 50,000 staff and achieved combined revenues of over 14 billion euros. Liebherr was founded by Hans Liebherr in 1949 in the southern German town of Kirchdorf an der Iller. Since then, the staff have been pursuing the goal of achieving continuous technological innovation, and bringing industry-leading solutions to its customers. Under the slogan '75 years of moving forward', the Group celebrates its 75th anniversary in 2024.

Images



liebherr-usa-R938.jpg

The R 938 crawler excavator replaces the previous R 946 at an operating weight of approximately 86,000 lbs.



liebherr-usa-R934.jpg

The new R 934 weighs approximately 78,500 lbs. and is positioned between the existing R 930 and the new R 938.



liebherr-usa-R945.jpg

The new R 945 provides customers with an option for the 90,000 lbs. class range.



liebherr-usa-LH22M.jpg

The LH 22 M Industry impresses with its sturdy and compact design, making it particularly suitable for the demolition applications.

Contact

Ana Cabiedes
Head of Marketing
Liebherr USA, Co
E-Mail: ana.cabiedes@liebherr.com

Published by

Liebherr USA, Co.
Newport News / USA
www.liebherr.com