

Press release

Liebherr exhibits at ReMA 2025 Convention & Expo

– Liebherr USA, Co. to exhibit at the ReMA 2025 Convention and Expo showcasing specialized machines for scrap and industrial material handling.

Liebherr's earthmoving and material handling technology team will exhibit at the ReMA 2025 Convention and Exposition showcasing the LH 40 M Industry material handler, L 550 XPower wheel loader and an R 922 powerhand crawler excavator at booth #A4.

Newport News, VA (USA), Liebherr USA, Co., March 15, 2025 – The ReMA 2025 Convention and Expo will take place in San Diego, CA from May 12-15, 2025. Liebherr will display multiple machines at their booth including the [LH 40 M Industry material handler](#), [L 550 XPower wheel loader](#), and [R 922 powerhand crawler excavator](#). Liebherr experts are also on-site at booth #A4 to answer any questions and provide assistance with equipment.

ReMA is the largest gathering of recycled materials industry professionals in the world, bringing together over 7,000 individuals to gain knowledge, network, and grow as scrap experts.

Liebherr offers specialized scrap machines that are strong, reliable and designed for high performance and maximum efficiency in the industrial material handling. This is accomplished through production of its high-quality components. The demands of industrial material handling are taken into account during the development stage of these components, and well-prepared Liebherr specialized machines for any application. Whether loading, unloading, or sorting out different kinds of scrap, steel, and metals, the Liebherr specialized machines are ideal for operationally effective material handling.

LH 40 M Industry material handler

The LH 40 M Industry is considered a top performer in its class. With the patented ERC System (energy recovery system), the maximum handling capacity is guaranteed while lowering the overall fuel consumption. This enables a more powerful machine with faster work cycles. The attachment of the machine is available in a variety of versions and is always optimally matched to your respective application including scrap, waste, and recycling.

Performance data

Model:	LH 40 M
System performance:	211 hp
Operating weight:	85,000 lbs.
Reach:	47 ft.
Grapple:	1.4 yd ³
Magnet:	57
Eye level:	18 ft.

Performance is extremely important in handling scrap materials. Whether sorting out mixed scrap material, loading and unloading HGVs and ships or loading shredders, shears and press plants, the Liebherr material handling machines are designed for the highest performance in a variety of work applications. High lift capacities and fast work cycles are essential for efficient handling operations. The optimum interplay between the hydraulics and electronics guarantees powerful, fast movements during handling while working with precision on challenging sorting tasks.

L 550 XPower wheel loader

The high-performance Liebherr XPower wheel loaders are highly productive and can handle a wide range of materials including scrap. With strong lift arm variants and application-specific attachments, they are versatile and universally deployable.

Performance data

Model:	L 550 XPower
Engine power:	219 hp / 163 kW
Bucket capacity:	4.5 yd ³
Operating weight:	40,895 lbs.
Breakout force:	37,095 lbs.
Tipping Load:	27,560lbs.

In addition to the different types of machines, you can choose between industrial and z-bar kinematics within the L 550 – L 566 XPower wheel loaders and the L 580 XPower. This means the right machine is always available for specific operations such as transporting and loading steel and metal scrap or loading the shredder systems. This increases the utilization of the machine and increases productivity by keeping job sites on time and within budget.

R 922 Powerhand crawler excavator

The R 922 crawler excavator showcases a completely updated design with characteristics of Liebherr Gen. 8 machines providing even greater comfort, better ergonomics and more enhanced performance.

The benefits of using a R 922 from Liebherr is that the machine comes preprogrammed from the factory to control the unit and the clamp functions are controlled by the joystick and not foot pedals, making it easier for the operator to control.

The Powerhand VRS 200 (Vehicle Recovery System) enables you to get the maximum value out of your junk car before they are scrapped. Traditional manual methods of removing and separating high value materials from recycled vehicles are labor intensive and costly. Liebherr is able to equip the R 922 excavators with a preparation kit that virtually makes the Powerhand System a plug and play hook up.

Performance data

Model:	R 922
Engine power:	163 hp / 120 kW
Engine torque:	503 lbf ft at 1,400 rpm
Dig depth:	22 ft. 2 in.
Operating weight:	50,930 lbs.
Breakout force:	35,970 lbs.

Liebherr offers a wide range of crawler excavators with operating weights from 50,930 lbs. to 198,640 lbs. Each is designed with one goal in mind, to meet the demands and specifications of our customers in terms of performance, reliability, and efficiency, as well as safety and comfort.

About the Liebherr USA, Co.

[Liebherr USA, Co.](#) based in Newport News, VA provides sales and service on behalf of ten different Liebherr product segments: earthmoving, material handling, mining, mobile and crawler cranes, tower cranes, concrete technology, deep foundation machines, maritime cranes; components, and refrigeration and freezing.

About the Liebherr Group – 75 years of moving forward

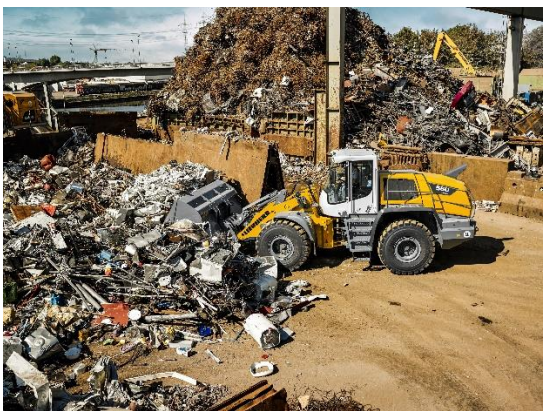
The [Liebherr Group](#) is a family-run technology company with a highly diversified product portfolio. The company is one of the largest manufacturers of construction equipment in the world. It also provides high-quality, user-oriented products and services in a wide range of other areas. The Liebherr Group includes over 150 companies across all continents. In 2023, it employed more than 50,000 staff and achieved combined revenues of over 14 billion euros. Liebherr was founded by Hans Liebherr in 1949 in the southern German town of Kirchdorf an der Iller. Since then, the staff have been pursuing the goal of achieving continuous technological innovation, and bringing industry-leading solutions to its customers. Under the slogan '75 years of moving forward', the Group celebrates its 75th anniversary in 2024.

Images



Liebherr-USA-LH40M-Industry.jpg

The LH 40 M Industry is considered a top performer in its class, offering maximum handling capacity with lower fuel consumption.



Liebherr-USA-L550-wheel-loader.jpg

The high-performance XPower wheel loaders are highly productive and can handle a wide range of materials including scrap.



Liebherr-USA-R922-crawler-excavator.jpg

The R 922 crawler excavator showcases the new generation 8 design offering greater comfort, ergonomics, and performance.

Contact

Ana Cabiedes
Head of Marketing
Liebherr USA, Co
E-Mail: ana.cabiedes@liebherr.com

Published by

Liebherr USA, Co.
Newport News / USA
www.liebherr.com