

Press release

The trio is complete

- **A next-generation dredger vessel is being equipped with a Liebherr LS-C 80 crane, a compact cylinder luffing ship crane designed for heavy maritime work in harsh offshore conditions**
- **Liebherr supplies the crane together with a rail-mounted gantry structure, allowing it to travel along the vessel's deck for flexible handling of equipment and tools during dredging operations**
- **The fully assembled crane and gantry system were lifted onto the transport vessel MV Aura in Rostock using the powerful land-based heavy lift crane TCC 78000**

As the third such crane installed on the vessel Seaway, the delivery of the LS-C 80 strengthens Liebherr's record of reliable engineering with the ship crane on a gantry system built for demanding marine operations. Following the vessels Helios and Krios, it reinforces the operator's continued trust in Liebherr's expertise.

Rostock (Germany), March 2026 – The gantry-mounted LS-C 80 merges Liebherr's advanced cylinder luffing technology with a rail traveling platform, allowing for precise crane positioning and efficient equipment movement across the vessel's deck. Its robust construction and low centre of gravity make it well-suited for demanding maritime environments, while the flexible gantry system ensures versatile equipment distribution on board. For this project, the LS-C 80 is configured to handle loads up to 50 tonnes with a reach of 26.5 meters, supporting reliable operations even in challenging conditions. The TCC 78000 was loading the assembled crane system in Rostock onto the transport vessel MV Aura, leveraging its 1,600-tonne lifting capacity to ensure safe mobilisation for transport to the shipyard in the Netherlands.

'Delivering the LS-C 80 on a Liebherr gantry shows how our engineering aligns with our customer's operational needs,' said Christian Voigtländer, Sales Manager at Liebherr-Rostock GmbH. 'This solution supports efficient daily routines at sea and reinforces our commitment to safe, durable and practical maritime equipment.'

The dredger was launched at the Royal IHC yard in Krimpen aan den IJssel and is now undergoing final outfitting and testing. Designed with a 31,000 cubic metre hopper, an optimised hull and advanced automation, it will enter service in mid-2026 to deliver efficient manoeuvrability and environmental performance for large scale dredging projects. With Seaway now joining Helios and Krios, all operating with Liebherr ship cranes, the operator's fleet gains reliable handling capability across its three newest vessels. This consistent approach strengthens long-term operational planning and underscores the trust placed in Liebherr's engineered solutions. Seaway itself features a modern diesel-electric architecture, advanced automation and methanol readiness. The LS-C 80 integrates seamlessly into this forward-looking concept, providing durable components and maximum availability for daily offshore operations.

Supporting project milestones through reliable crane integration

Through coordinated technical collaboration, established engineering experience, and the support of Liebherr's global service network, a system has been developed that meets high operational demand both now and in the future. The installation of the Liebherr LS-C 80 supports the vessel's ongoing commissioning to become fully operational as the ship advances through its harbour trials. Its precise control system provides repeatable movements for daily tasks, while features such as the centre mounted cabin, remote controllable operation, outside load indication and optical sensors for identifying obstacles along the gantry rails, help crews maintain safe workflows on deck.

Liebherr is proud and thankful to be part of such a project and to partner with the well experienced and professional Company Royal IHC.

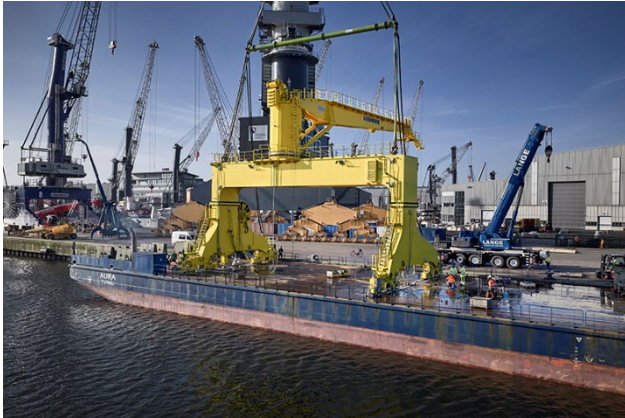
About Liebherr-Rostock GmbH

Liebherr-Rostock GmbH is one of the leading European manufacturers of maritime handling solutions. The product range includes ship, mobile harbour and offshore cranes. Components for container cranes are also included in the product portfolio.

About the Liebherr Group

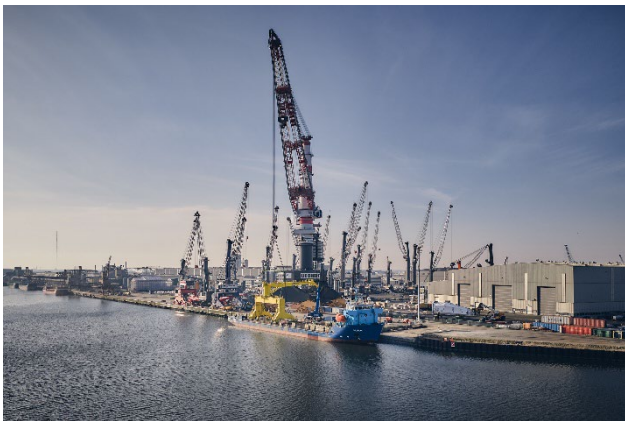
The Liebherr Group is a family-run technology company with a highly diversified product programme. The company is one of the largest construction equipment manufacturers in the world. It also provides high-quality, user-oriented products and services in a wide range of other areas. The Liebherr Group includes over 150 companies across all continents. In 2024, it employed more than 50,000 staff and achieved combined revenues of over 14 billion euros. Liebherr was founded by Hans Liebherr in 1949 in the southern German town of Kirchdorf an der Iller. Since then, the employees have been pursuing the goal of achieving continuous technological innovation, and bringing industry-leading solutions to its customers

Images



liebherr-ls-c-80-royal-ihc_1.jpg

The newest LS-C 80 on the vessel SEAWAY perfectly completes the trio and is ready for future dredging operations.



liebherr-ls-c-80-royal-ihc_2.jpg

The TCC 78000 positions the LS C 80 on the vessel as part of the upcoming shipment to the Netherlands.



liebherr-ls-c-80-royal-ihc_3.jpg

Designed for modern dredging projects, the ship crane combines high handling capacity with a durable and low maintenance structure for productive daily operation.

Contact

Anne Lau
Marketing Manager – Maritime Cranes
Phone: +49 38160 / 0650 - 31
E-Mail: anne.lau@liebherr.com

Published by

Liebherr-Rostock GmbH
Rostock / Germany
www.liebherr.com