

Press release

Liebherr introduces the T48-8s telescopic handler: more reach, more height, more versatility

- **Fully available now:** First machines rolling out of production, ready for configuration and order
- **Extended reach and lift capacity:** True 8-metre lift height and 4.8-tonne load capacity with a 550 mm longer boom than the T55-7s
- **Proven performance and comfort:** Shares powerful 115 kW engine, high-performance hydraulics, and ergonomic cab with the T55-7s

Liebherr expands its successful range of telescopic handlers with the launch of the new Liebherr T48-8s. The model combines the proven performance and comfort of the T55-7s with an extended working range, offering a maximum lift height of 8 metres and a maximum load capacity of 4.8 tonnes. Sales will officially commence at Bauma 2025, with deliveries already underway.

Telfs (Austria), 14 January 2026 – The T48-8s features a 550 mm longer telescopic boom than the T55-7s. This extension provides operators with an additional metre of lift height and forward reach, enabling more efficient material handling, particularly when working with bulk trailers, hoppers, or loading containers up to 4 metres high.

In industrial material handling and recycling operations, where the optimal use of storage volume is crucial, the T48-8s demonstrates its full potential. Operators can stack and move materials more efficiently without driving deep into piles, improving manoeuvrability, safety, and productivity.

Proven Liebherr performance and comfort

The T48-8s shares its base components with the T55-7s, including the powerful 115 kW engine, high-performance working hydraulics, and the ergonomically designed operator's cab with excellent all-round visibility. The multifunction joystick, mounted directly to the seat, moves synchronously with the operator, ensuring intuitive and precise control at all times.

The electronic pre-control system enables the integration of Liebherr assistance systems such as Auto Power, Fine Control Mode, and Automatic Telescope Retraction. These features simplify operation, enhance efficiency, and reduce operator fatigue during extended working periods.

Powerful and efficient hydraulics

The new model is equipped with a load-sensing hydraulic pump with a variable flow rate of up to 200 l/min, providing high performance while maintaining energy efficiency. The combination of simultaneous working movements, fast cycle times, and ECO-Motion (load-free lowering) ensures smooth and responsive handling for all applications.

Precision, visibility, and safety

The T48-8s offers significant advantages in loading operations. The longer boom not only increases reach but also reduces the lift angle required to reach the tipping position. This improves visibility of the load and surrounding area, reducing the risk of collisions.

An optimised dump angle allows materials to discharge more easily from the bucket, supporting quicker and cleaner loading operations. Combined with Liebherr's renowned structural stability and advanced load moment control, the machine ensures maximum safety and reliability in all conditions.

Intelligent operation and customisation

The T48-8s is fitted as standard with a 3.5-inch colour display, with an optional 7-inch display available for enhanced operator information and machine monitoring. The steering system includes three selectable modes plus crab steering, electronically switchable via a rotary control, providing flexibility for every working environment.

Performance-driven design

The T48-8s achieves comparable lift capacities to the T55-7s across most of the working range, while offering greater reach both upwards and forwards. This makes it the ideal solution for customers prioritising lift height and extended reach, such as those operating in industrial, agricultural, or recycling sectors.

In direct comparison with competitor 8-metre models, the Liebherr T48-8s delivers a true 8-metre lift height, whereas many competitor machines in this class only reach 7.6 or 7.7 metres. Despite slightly lower nominal lift capacities at full retraction, the T48-8s matches or surpasses competitors in real-world performance between 2 and 4 metres of reach.

Availability

The first T48-8s machines are now rolling out of production and are fully available. The model can be configured and ordered via LIAS, extending Liebherr's telescopic handler range with a solution that combines greater reach, strong lifting performance, and the exceptional comfort and reliability customers have come to expect from Liebherr.

About the Liebherr Group

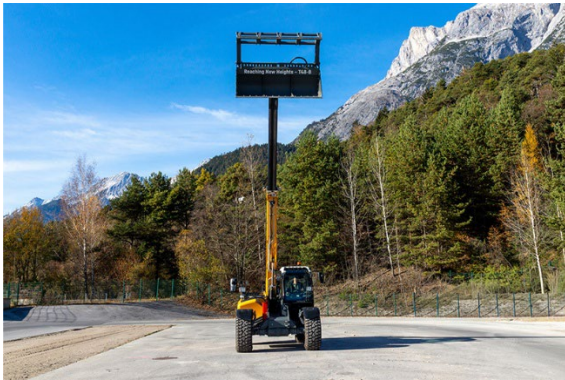
The Liebherr Group is a family-run technology company with a highly diversified product portfolio. The company is one of the largest manufacturers of construction equipment in the world. It also provides high-quality, user-oriented products and services in a wide range of other areas. The Liebherr Group includes over 150 companies across all continents. In 2024, it employed more than 50,000 staff and achieved combined revenues of over 14 billion euros. Liebherr was founded by Hans Liebherr in 1949 in the southern German town of Kirchdorf an der Iller. Since then, the staff have been pursuing the goal of achieving continuous technological innovation, and bringing industry-leading solutions to its customers.

Images



liebherr-t48-8s-low-96dpi.jpg

The new Liebherr telescopic handler T48-8s at a glance.



liebherr-t48-8s-front-extended-96dpi.jpg

Front view of the T48-8s with the boom fully extended.



liebherr-t48-8s-side-96dpi.jpg

View from the Side of the telescopic handler T48-8s with the boom retracted.



liebherr-t48-8s-front-high-96dpi.jpg

Front view of the T48-8s with the boom retracted.

Contact

Thor Remmerde
Marketing Manager PR & Content
Telefon: +43 690 50064811
E-Mail: Thor.Remmerde@liebherr.com

Published by

Liebherr Werk Telfs GmbH
Telfs / Austria
www.liebherr.com