

Press release

Precision work on the world cultural heritage site Saint-Michel Basilica

- **New Liebherr LTM 1250-5.1 completes its maiden voyage on historic church tower in Bordeaux**
- **Hydraulically adjustable double folding jib overcomes obstruction at a height of 68 metres**
- **Safe dismantling of heavy scaffolding parts requires high-precision load manoeuvres**

In Bordeaux (France), a Liebherr LTM 1250-5.1 mobile crane has undertaken the challenging dismantling of the imposing scaffolding erected around the free-standing church tower of the Basilica of Saint-Michel. The filigree top of the free-standing tower had been extensively restored over the past five years and now shines again in its original form. Now the massive, complex steel structure of the scaffolding has been dismantled. With an ideal rig configuration, even elements weighing over 4 tonnes could be safely lifted and transported at great heights with reaches of up to 24 metres.

Ehingen (Danube) (Germany), 10 March 2026 – French industrial company Groupe Foselev arrived with its brand-new LTM 1250-5.1 to dismantle the upper parts of the heavy scaffolding on the highest church tower (114 metres) in southern France. With its successful maiden voyage, the new Liebherr mobile crane impressively underlined its leading position as the world's most powerful 5-axle mobile crane. With its 60-metre telescopic boom, a luffing jib and a 22-metre hydraulically adjustable double folding jib, the crane reached a hook height of 81 metres. The massive structure, which had served as the basis for further scaffolding during the renovation of the tower spire built 160 years ago, reached almost to this level.

In the selected rigging configuration and thanks to its high load-bearing capacity, the LTM 1250-5.1 proved to be the ideal piece of equipment for this job – after all, it had to safely overcome an interfering edge caused by the scaffolding structure at a height of around 68 metres. By carefully tilting the lattice tip, the hook block was also able to reach loads that were located far inside the steel structure. With a diameter of around 25 metres, this enclosed the free-standing stone tower, which was not connected to the basilica. This enabled the LTM 1250-5.1 to reach all areas of the scaffolding from just two locations and dismantle it piece by piece.

“From Renault to Mercedes”

However, this required the utmost precision. Crane operator David had to navigate his machine with extreme care. Elements weighing up to over 4 tonnes were attached to the crane hook at great heights by the scaffolders, dismantled and then manoeuvred with great care past the freshly renovated finials

and the small side turrets. The professionals on the scaffolding were visibly impressed by the precise load control. “Très, très précis,” commented Thibaut, one of the climbing professionals, on the centimetre-precise guidance of the crane hook. Both individual steel girders and complete scaffolding sections were securely attached and lifted in a controlled manner by him and his colleagues.

Crane operator David was also enthusiastic about the capabilities of the new machine from his cab. It was the first time he had operated a Liebherr crane, having previously only used equipment from other manufacturers. “Switching to Liebherr is a bit like switching from a Renault to a Mercedes for me,” he commented with a wink. Although it was David’s first job with the new crane, he mastered the process of moving the machine with the boom erected and the tip attached safely and expertly. The procedure took him about an hour, after which the machine was fully supported on the opposite side of the tower and ready for use again.

His employer, Foselev, also drew a positive conclusion after the first use of the new LTM 1250-5.1: “A perfect crane for this task,” said Joël Karotsch, head of the Foselev Sud Ouest branch in Bordeaux, after visiting the construction site. “The hydraulic jib is of course particularly convenient and indispensable for this application.”

The Foselev Group has more than 500 cranes, 30 of which are dispatched from Bordeaux. “Around a third of our cranes are from Liebherr,” reports Karotsch, adding: “And the trend is rising. The modern features, the robustness of the machines and Liebherr’s reliable after-sales service are decisive factors for us.”

About Liebherr-Werk Ehingen GmbH

Liebherr-Werk Ehingen GmbH is one of the leading manufacturers of mobile and crawler cranes. The range of mobile cranes extends from 2-axle 35-tonne cranes to heavy-duty cranes with a lifting capacity of 1,200 tonnes and a 9-axle chassis. The lattice boom cranes on mobile or crawler chassis achieve lifting capacities of up to 3,000 tonnes. With universal boom systems and extensive additional equipment, they are used on construction sites all over the world. 5,000 employees work at the Ehingen site. Comprehensive, worldwide service guarantees high availability of the mobile and crawler cranes. In 2024, the Liebherr plant in Ehingen generated a turnover of 3.19 billion euros.

About the Liebherr Group

The Liebherr Group is a family-run technology company with a broadly diversified product range. The company is one of the world's largest manufacturers of construction machinery. It also offers high-quality, user-oriented products and services in many other areas. Today, the group comprises over 150 companies on all continents. In 2024, it employed more than 50,000 people and generated consolidated total sales of over €14 billion. Liebherr was founded by Hans Liebherr in 1949 in Kirchdorf an der Iller in southern Germany. Since then, the employees have pursued the goal of impressing their customers with sophisticated solutions and contributing to technological progress.

Images



liebherr-ltm-1250-5-1-foselev-1.jpg

The LTM 1250-5.1 reaches a hook height of 81 metres on the free-standing church tower of the Basilica of Saint-Michel in Bordeaux. The late Gothic spire had fallen into disrepair and has been restored over the last five years.



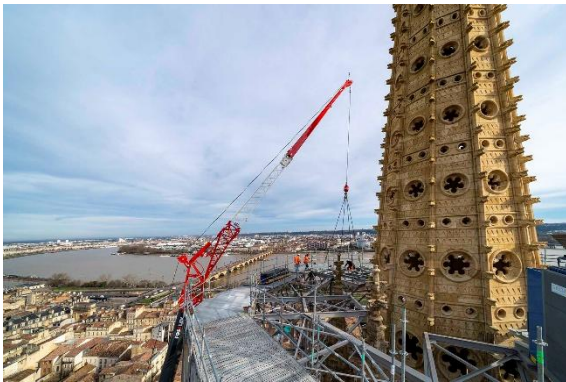
liebherr-ltm-1250-5-1-foselev-2.jpg

Fully supported on the forecourt of the basilica, Foselev's LTM 1250-5.1 demonstrated its strength: with 41 tonnes of ballast and a 22-metre-long, hydraulically adjustable double folding jib, the brand-new mobile crane was able to reach every part of the enormous scaffolding from just two locations.



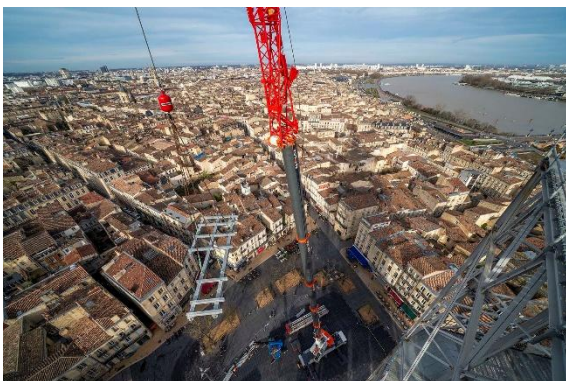
liebherr-ltm-1250-5-1-foselev-3.jpg

Crane operator David positions his new crane. Also present: Joël Karotsch, head of the Foselev branch in Bordeaux.



liebherr-ltm-1250-5-1-foselev-4.jpg

The 60-metre-long telescopic boom with its adapter piece overcomes the interfering edge of the scaffolding. With the hydraulically tiltable double folding tip, elements far inside the steel structure can also be dismantled.



liebherr-ltm-1250-5-1-foselev-5.jpg

View of the crane and the roofs of Bordeaux. The city in south-western France is one of the largest urban World Heritage Sites in terms of area. The Garonne river flows in the background on the right of the picture.



liebherr-ltm-1250-5-1-foselev-6.jpg

The crane is able to reposition itself with ballast and an attached lattice jib. After an hour, Foselev's LTM 1250-5.1 was ready for use at its new location.

Contact

Berenike Nordmann
Marketing and Communication
Telephone: +49 7391 / 502-0
Email: berenike.nordmann@liebherr.com

Published by

Liebherr-Werk Ehingen GmbH
Ehingen (Danube) / Germany
www.liebherr.com