

Press release

Liebherr commissions PR 776 G8 dozers with LiReCon teleoperation system for SQM in Chile

- **At the end of 2025, Liebherr Chile sold and commissioned two PR 776 G8 mining dozers equipped with the LiReCon teleoperation system for SQM at the Nueva Victoria iodine mine in northern Chile**
- **This marks the first time Liebherr has delivered a complete LiReCon teleoperation solution to a mining customer, including the teleoperation control stand and the machine-side teleoperation equipment for the PR 776 G8**
- **The dozers will be operated from within the cab for the first few months at the mine, with their teleoperations capabilities to be utilised in the coming months**
- **Liebherr Chile also delivered two L 586 XPower wheel loaders, which will operate alongside the 70-tonne dozers at the mine**

In December 2025, Liebherr Chile delivered two PR 776 G8 dozers and two L 586 XPower wheel loaders to SQM at the Nueva Victoria mine in the Tarapacá region of northern Chile. This delivery marks the first time that Liebherr's flagship 70-tonne mining dozer has been supplied to a customer equipped with the LiReCon teleoperation system.

Colmar (France), 11 March 2026 – Since their delivery to SQM, the PR 776 G8 dozers have delivered positive results for the world's largest iodine producer. The excellent pushing power and fuel efficiency of the PR 776 G8 – the largest hydrostatic dozer on the market – has been a welcome addition to the Nueva Victoria fleet.

'During its first months of operation, we witnessed the PR 776 G8's strong pushing power, smooth operation, good stability and low diesel consumption,' says Nelson Torres, operation vice president of SQM.

Liebherr Chile has worked alongside SQM since two R 9200 excavators were delivered to the Nueva Victoria iodine mine in 2019. SQM also received the first R 9300 excavator in South America in late 2024, with a second unit delivered in October 2025. The addition of these PR 776 G8s and the L 586 XPower wheel loaders brings the number of Liebherr machines in SQM's fleet to eight.

LiReCon: teleoperation for enhanced safety and efficiency

SQM made the decision to incorporate LiReCon into its Nueva Victoria site for two main reasons: to be ahead of the curve in terms of innovation and technological advancements that contribute to the company's day-to-day operations and to improve operator comfort and safety, allowing work from outside the mine.

'We are pioneers. We will carry out a strong training program to offer this technology to our operators so they can command the dozers from the comfort of the LiReCon teleoperation stand – making their experience on shift quieter and more pleasant while also reducing their risk exposure,' says Torres. 'All while using a new technology that improves productivity and continues with the vision of making Nueva Victoria mine a better place to work.'

LiReCon, short for Liebherr Remote Control, consists of a teleoperation control stand and machine-side installations including multiple cameras, microphones and sensors. These provide operators with multi-angle visual coverage and real-time audio feedback, giving a level of situational awareness beyond conventional cab operation.

'Developed at Liebherr-Werk Telfs, the LiReCon teleoperation system represents the next generation of safe and efficient mining operations,' says Markus Wittwer, head of sales for the PR 776 and mining at Liebherr-Werk Telfs GmbH. 'By combining this innovative technology with the PR 776 G8 crawler dozers, operators can control the machines remotely from a secure environment, maintaining full precision and performance even in high-risk areas.'

As this is the first time that PR 776 G8s have been deployed at Nueva Victoria, the dozers will initially go to work with operators in the cab to give the onsite team a chance to familiarise themselves with the machine up close. The dozers' LiReCon capabilities will be activated in the coming months, enabling safe operation in challenging areas within the mine, which include zones with geotechnical instability, proximity to highwalls or dumps and environments with increased dust or heat. Once 'turned on', the teleoperators system will also support rapid operator shift changes at the teleoperation stand, helping reduce idle time and improve machine utilisation.

While SQM will primarily be using LiReCon with its new PR 776 G8 dozers, the system's design allows for future integration with other machines, including excavators and cranes.

Strong partnership and long-term support

Liebherr Chile, Liebherr-Mining Equipment Colmar SAS and Liebherr-Werk Telfs GmbH are working together to commission LiReCon at Nueva Victoria. The close collaboration between the Liebherr companies will provide SQM with the factory support, technical expertise and specialist training needed to ensure seamless integration of the teleoperation system into site operations.

Liebherr will ensure that the dozers and – once activated – the LiReCon teleoperation system support safe, efficient mining operations by providing ongoing service, training and technical support to SQM over the course of machines' service life.

About Liebherr Mining

Liebherr Mining is one of 13 product segments within the wider Liebherr Group and has been designing, manufacturing, and supporting mining equipment for over 50 years. The company provides a full range of solutions, including high-quality trucks, excavators, and dozers along with technology and service products that help customers get the very best out of their Liebherr machines. Liebherr Mining is also following its roadmap, which plans to offer low and zero emission options for all of its equipment to support customers as they embark on their decarbonisation journeys. The company has a global presence with over 4,400 employees in 70 countries around the world.

About the Liebherr Group

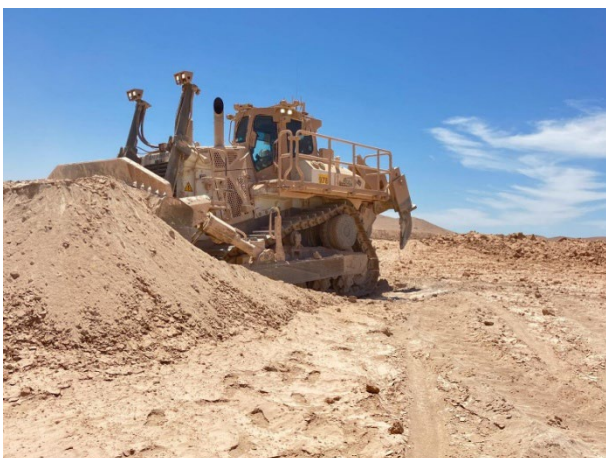
The Liebherr Group is a family-run technology company with a highly diversified product programme. The company is one of the largest construction equipment manufacturers in the world. It also provides high-quality, user-oriented products and services in a wide range of other areas. The Liebherr Group includes over 150 companies across all continents. In 2024, it employed more than 50,000 staff and achieved combined revenues of over 14 billion euros. Liebherr was founded by Hans Liebherr in 1949 in the southern German town of Kirchdorf an der Iller. Since then, the employees have been pursuing the goal of achieving continuous technological innovation and bringing industry-leading solutions to its customers.

Images



liebherr-pr776-sqm-ripper-72dpi.jpg

One of SQM's new PR 776 dozers working hard at the Nueva Victoria iodine mine.



liebherr-pr776-sqm-working-72dpi.jpg

These 70-tonne machines are being operated from the cab now, but these will switch to LiReCon teleoperations in the coming months.

Contact

Swann Blaise
Divisional General Manager Marketing
Phone: +1 757 928 2239
E-mail: swann.blaise@liebherr.com

Published by

Liebherr-Mining Equipment SAS
Colmar / France
www.liebherr.com

Follow Liebherr Mining on:

[LinkedIn](#)

[Instagram](#)

[Facebook](#)

[YouTube](#)