

Press release

Liebherr exhibits at Elko Mining Expo 2026

- **Elko Mining Expo will take place in Elko, NV from June 4-5, 2026.**
- **Liebherr USA, Co. will exhibit at booth #574-576 with product experts on-site**

Newport News, VA (USA), Liebherr USA, Co., April 4, 2026 – The 2026 Elko Mining Expo will take place in Elko, Nevada from June 4-5, 2026. Product experts from Liebherr’s mining division will be located at booth #574-576 to inform attendees about Liebherr’s mining product portfolio including the R 9600 mining excavator and the PR 776 mining dozer as well as the latest in zero-emission mining technology from Liebherr.

Liebherr USA, Co. is proud to serve as a premier sponsor for the 2026 Elko Mining Expo, a sponsorship that Liebherr has held for several years. Featuring over 350 exhibitors, Elko Mining Expo is one of the longest running mining expos in the United States and gives visitors the opportunity to explore and learn about innovative mining technology from professionals and manufacturers in the mining industry.

Mining reimagined

Liebherr offers an extensive lineup of mining equipment, from excavators and dozers to mining trucks. Standout in its class, the [generation 8 R 9600 mining excavator](#) delivers exceptional performance with 20% lower fuel consumption compared to Liebherr’s previous model. It also boasts the largest bucket capacity in the 600-ton class, reinforcing its reputation as a true heavy-duty powerhouse. Equipped with Liebherr Power Efficiency technology, including patented engine and hydraulic management systems, the R 9600 gives operators noticeably improved fuel efficiency. Combined with an average service life exceeding 80,000 hours, this excavator is built to be a reliable, long-term partner on any mining site.

The [PR 776 mining dozer](#) stands out as the world’s largest hydrostatic dozer, delivering reduced fuel consumption and advanced assistance systems as well as optimal operator visibility and a comfortable cab that boosts operator efficiency on site. Its hydrostatic drive system provides smooth, continuous speed control, responsive braking and quick reactions to simple joystick inputs, successfully setting it apart from other dozers in its class. For interested attendees, please ask our team to arrange a test drive of the dozer at the Liebherr Elko facility.

The path to zero emissions

Liebherr is shaping the future of low-emission mining through a growing portfolio of electric mining solutions and alternative fuel technologies. Decarbonizing a mine site has no universal blueprint, but with more than 50 years of industry experience, Liebherr has engineered machines that deliver significantly higher fuel efficiency in addition to developing the Liebherr Trolley Assist System that’s compatible with all Liebherr mining trucks and dramatically reduces fuel consumption across automated haul cycles.

With the introduction of the [T 264 battery-electric mining truck](#) to product portfolio, Liebherr now has a fully electric solution in the 240-ton class developed through its partnership with Fortescue. Together, these advancements and the ongoing collaboration with Fortescue are paving the way for a large-scale, zero-emission mining ecosystem expected to be operational by 2030.

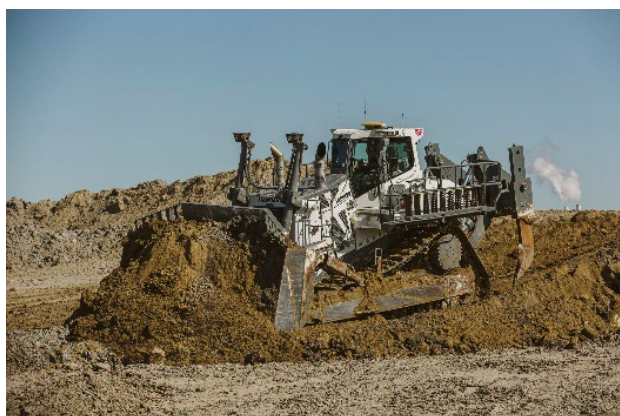
About Liebherr USA, Co.

[Liebherr USA, Co.](#) based in Newport News, VA provides sales and service on behalf of ten different Liebherr product segments: earthmoving, material handling, mining, mobile and crawler cranes, tower cranes, concrete technology, deep foundation machines, maritime cranes; components, and refrigeration and freezing.

About the Liebherr Group

The [Liebherr Group](#) is a family-run technology company with a highly diversified product programme. The company is one of the largest construction equipment manufacturers in the world. It also provides high-quality, user-oriented products and services in a wide range of other areas. The Liebherr Group includes over 150 companies across all continents. In 2024, it employed more than 50,000 staff and achieved combined revenues of over 14 billion euros. Liebherr was founded by Hans Liebherr in 1949 in the southern German town of Kirchdorf an der Iller. Since then, the employees have been pursuing the goal of achieving continuous technological innovation, and bringing industry-leading solutions to its customers.

Images



Liebherr_USA_G8_PR776.jpg

The PR 776 is the world's largest hydrostatic dozer and can rip, push, stockpile, clear and reclaim heavy duty materials with ease.



Liebherr_USA_G8_R9600.jpg

The R 9600 is a leader in the industry with the highest bucket capacity in the 600 t class.

Contact

Ana Cabiedes
Head of Marketing
Liebherr USA, Co.
E-mail: ana.cabiedes@liebherr.com

Published by

Liebherr USA, Co.
Newport News / USA
www.liebherr.com