

Press release

## Liebherr at IFAT 2026 in Munich

---

- World premiere of the new LH 18 M Industry and LH 22 M Industry E material handlers from Generation 8
- Liebherr presents three wheel loaders: the L 507 E and L 546, as well as the anniversary model L 550 XPower
- LHDismantle and Turnkey Systems as innovative solutions for high-voltage batteries
- LiXplore® digital camera-monitor system for convenient 360° all-round visibility
- Liebherr booth 151 in Hall C5

At IFAT 2026, the world's leading exhibition for water, wastewater, waste and raw materials management, which takes place in Munich from 4 to 7 May 2026, Liebherr will be represented with a stand covering approximately 406 m<sup>2</sup>. In Hall C5, booth 151, Liebherr will be exhibiting machines specifically designed for use in waste management and recycling. For the first time, Liebherr will be showcasing two prototypes from the new Generation 8: the LH 18 M Industry and the LH 22 M Industry E. With the L 507 E, the L 546 and the anniversary wheel loader L 550 XPower, Liebherr will be presenting three models from its wheel loader portfolio. In the field of digitalisation, Liebherr is showcasing innovative solutions for high-voltage batteries with LHDismantle and Turnkey Systems, as well as the LiXplore® camera-monitor system.

Munich (Germany), April 09, 2026 – The recycling industry is growing rapidly and undergoing significant change: in recent years, many waste management companies have evolved from generalists into highly specialised recycling firms. The machinery and technologies used in the recycling industry must also meet these changing requirements. Liebherr recognises this need and is showcasing machines and digital solutions at the IFAT exhibition that are specifically designed for a wide range of applications in the fields of recycling and waste management.

### Trade fair debut of Liebherr's new Generation 8 material handling machines

At IFAT, Liebherr is unveiling two prototypes of its new Generation 8 material handling machines for the first time: the LH 18 M Industry G8 and the LH 22 M Industry E G8. This demonstrates the Liebherr Group's technology-neutral approach and its strategy of tailoring different drive concepts specifically to the respective operational requirements. Whilst the LH 18 M Industry G8 features a conventional drive system, the LH 22 M Industry E G8 expands Liebherr's portfolio of electric material handling machines. A key feature of the new generation is the innovative, adaptive operating concept INTUSI (Intuitive User Interface), which comes as standard. It allows functions to be customised, thereby offering maximum flexibility in day-to-day operation. Thanks to the intelligent layout within the cab, all relevant control panels and joysticks are easily accessible and intuitive to operate.

INTUSI is fully integrated into the new Liebherr emCAB. The further-developed cab structure features enlarged glass surfaces – with 15% more glass – for significantly improved all-round visibility. The additional interior space and the optimised layout of the control elements noticeably enhance comfort and ergonomics. The generous glazing ensures the best possible overview in all directions, thereby contributing significantly to safety in the working environment. In addition, both machines will in future be equipped as standard with a sliding door for cabin access and a fully glazed cabin floor.

## **For demanding applications in waste management: the wheel loader L 546**

Liebherr presents the L 546 model from its range of medium-sized wheel loaders. This wheel loader impresses with a powerful lifting frame featuring z-bar kinematics. This results in fast cycle times and dynamic working movements during material handling – even with heavy attachments such as high-tipping buckets in recycling. For applications that regularly require different attachments, there is a visibility-optimised quick coupler as well as the fully automatic LIKUFIX quick coupling system. The L 546, which can be seen at the exhibition, is equipped with intelligent assistance systems. These include active pedestrian detection with brake assist and the Skyview camera system. These systems detect potential hazards at an early stage and warn operators via visual and audible signals.

## **100,000 reasons to celebrate: the anniversary L 550 XPower wheel loader at IFAT**

A particular highlight at IFAT is the 100,000<sup>th</sup> Liebherr wheel loader: an L 550 XPower wheel loader in a special dark blue finish, which has been handed over to STORK Umweltdienste GmbH. The anniversary machine symbolises over three decades of trusting cooperation between Liebherr, STORK and the sales partner Kurt König. The '100,000' lettering, designed using historical imagery, impressively illustrates the development of Liebherr wheel loaders from the early prototypes to the present day, making the machine a real eye-catcher. STORK is showcasing the L 550 XPower wheel loader at its booth (C5-C6), so that visitors can see the impressive anniversary wheel loader for themselves.

## **Zero local CO<sub>2</sub> emissions and low noise levels: the Liebherr L 507 E battery-electric wheel loader**

At IFAT, Liebherr is presenting the L 507 E, the first battery-electric wheel loader in the Liebherr Group. It combines the proven advantages of a Liebherr stereoloader with a battery-electric drive concept developed by Liebherr. The performance of the L 507 E is identical to that of conventionally powered Liebherr wheel loaders in the same size class. Yet it produces zero local CO<sub>2</sub> emissions and noise levels are low. This makes the wheel loader particularly suitable for noise- and emission-sensitive applications, such as in inner-city areas or indoors. Furthermore, Liebherr has equipped the L 507 E with a high-voltage battery system developed specifically for wheel loader applications, ensuring powerful performance and efficient charging processes.

## **LHDismantle – automated non-destructive disassembly of high-voltage batteries**

Based on the findings from the pilot plant, the unscrewing process has been specifically developed to industrial maturity. LHDismantle provides a market-ready industrial solution that automates this process in a robust and efficient manner. The solution overcomes key challenges such as component variety,

contamination or damaged components, and the highest safety requirements – thanks to intelligent sensor technology, flexible software and an intuitive user interface.

## **Turnkey Systems – modular, scalable systems for the automated disassembly and discharging of high-voltage batteries**

The pallet handling system PHS connects automation cells, machines and manual workstations into a seamless system. It enables a free flow of materials, responds flexibly to variants and quantities, and handles transport, loading, storing and the entire intralogistics process. The battery discharge technology guarantees safety during the discharge and deactivation of battery systems. The extracted energy is fed back into the grid and can be used to power the plant. Automated stations such as the LHDismantle unscrewing technology, machining centres for milling processes or laser cutting systems can be flexibly integrated into the PHS. Additional manual workstations enable flexible and safe further processing of batteries after discharge.

## **360° for total peace of mind: Liebherr's digital all-round vision systems**

Whether in winter maintenance, waste management or street cleaning – wherever large machines operate in confined spaces, reliable all-round visibility is crucial. This is precisely where Liebherr's LiXplore® camera systems come into their own: they support operators in always keeping their surroundings in view and making work processes more safe and efficient. The LiXplore® portfolio comprises various system solutions for different requirements: the 360° LiXplore® Bird's Eye variant combines multiple camera images to provide a complete bird's-eye view. This allows for extensive monitoring of driveways and work areas, as well as the early detection of obstacles and people. For applications focusing on specific areas, the LiXplore® CMS (camera-monitor systems) offer targeted and needs-based monitoring. The camera systems are complemented by LiXplore® Detect, an AI-based assistance function for person detection. The LiXplore® camera systems can be integrated into both new machine designs and existing vehicle fleets.

## **About the Liebherr Group**

The Liebherr Group is a family-run technology company with a highly diversified product range. The company is one of the largest construction equipment manufacturers in the world. It also provides high-quality, user-oriented products and services in a wide range of other areas. The Liebherr Group includes over 150 companies across all continents. In 2025, it employed more than 55,000 staff and achieved combined revenues of over 14 billion euros. Liebherr was founded by Hans Liebherr in 1949 in the southern German town of Kirchdorf an der Iller. Since then, the employees have been pursuing the goal of achieving continuous technological innovation, and bringing industry-leading solutions to its customers.

## Bilder



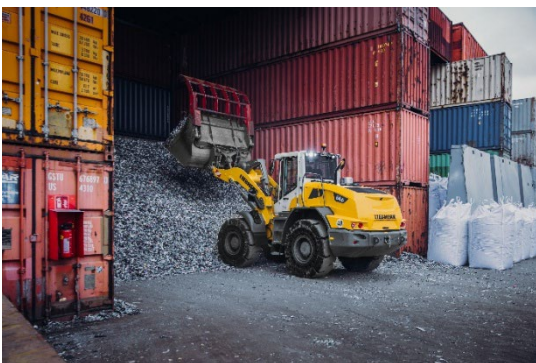
liebherr-lh-22-m-industry-e-G8.jpg

Liebherr is unveiling the LH 22 M Industry E G8, the first prototype of a Generation 8 electric material handling machine, at IFAT.



liebherr-lh-18-m-industry-G8.jpg

The LH 18 M Industry G8, featuring the new emCAB operator's cab, offers optimum all-round visibility thanks to increased glass area and a fully glazed cab floor fitted as standard.



liebherr-L546-G8.jpg

At IFAT 2026, Liebherr will be presenting the L 546 medium-sized wheel loader, equipped with intelligent assistance systems.



liebherr-jubilaumsradlader-100000.jpg

A milestone on wheels: the 100,000th Liebherr wheel loader is on display at the booth (C5-C6) of STORK Umweltdienste GmbH.



liebherr-l507-e-G8.jpg

The battery-powered travel drive impresses in practical use with its performance and long running time.



liebherr-demontage-phs.jpg

A modular and scalable system concept for the safety of handling, transport and storing of high-voltage batteries.



Liebherr-digital-camera-recycling.jpg

The LiXplore® digital camera and monitor system enables detailed monitoring of the work area as well as a convenient 360° panoramic view.

## Contact

Marc Wiedenmann

Marketing

Phone: +49 7354 / 80 – 8494

Email: [marc.wiedenmann@liebherr.com](mailto:marc.wiedenmann@liebherr.com)

## Published by

Liebherr-Hydraulikbagger GmbH

Kirchdorf/Iller / Germany

[www.liebherr.com](http://www.liebherr.com)