

Press release

## **A powerful première in Paris – new LTM 1400-6.1 impresses right across the board**

- Liebherr LTM 1400-6.1 mobile crane dismantles large tower crane in Paris
- Quick self-assembly of the Y-guying system thanks to Solidlink
- New 400-tonne crane is the most powerful 6-axle mobile crane in the world

The new Liebherr LTM 1400-6.1 mobile crane owned by Montagrues demonstrated its performance capabilities during its first job in Paris: the task was to dismantle an 80-metre-high construction crane under great time pressure and in limited space. The 400-tonne crane impressed in all respects – especially thanks to the quick and efficient self-assembly of the Y-guying system.

Ehingen (Donau) (Germany), 23 April 2026 – “The new way of assembling the complete Y-guying system, which we call Superlift, really saves us an enormous amount of time. And speed is the decisive factor on our construction sites here in Paris,” explains Daniel Pereira, Managing Director of Montagrues. He is already at the construction site in the early hours of the morning to watch the first assembly of the new mobile crane. With its new LTM 1400-6.1, Pereira wants to pay particular attention to the self-assembly of the Y-guying system. “The quick assembly of the Superlift represents a real innovative step,” says Pereira. And the smooth process in Paris confirms this in practice.

The brand-new mobile crane arrives on site before daybreak. Once the crane has been precisely positioned on the very limited footprint, the set-up work begins, which is supervised by a Liebherr service technician. Self-assembly of the ballast frames and all counterweights is quick and easy. The LTM 1400-6.1 then lifts the complete Y-guying system from the low-loader and places it on its undercarriage. The subsequent luffing of the boom then ensures that the hydraulic quick coupling connects automatically with the telescopic boom. Bolting is ultimately carried out hydraulically and is controlled by the crane operator. Only the electrical connection is established manually.

### **Solidlink makes it happen**

This time-saving process is made possible by a technology that Liebherr has successfully adapted from the earthmoving sector. The fully automatic Solidlink quick coupling system has been used there for a long time to quickly change attachments. Solidlink is now being used for the first time on the LTM 1400-6.1 for the fully automatic connection of the Y-guying system and telescopic boom.

Once the crane has been positioned, the crane operator and set-up personnel only need around two hours in total to place the 90 tonnes of ballast and install the Y-guying system ready for use. “The Superlift was installed in less than an hour – and that was the very first time it was set up,” summarises Daniel Pereira with satisfaction. An LTM 1060-3.1 then takes care of the attachment of the lattice jib.

The subsequent deployment of the mobile crane runs just as smoothly as its assembly. “We have to dismantle a large Liebherr top-slewing crane with a hook height of 75 metres. About a year ago, we assembled this construction crane with our LTM 1450-8.1,” explains Daniel Pereira. “Because this crane is not currently available to us, the new LTM 1400-6.1 with Superlift and a 17.5-metre-long fixed jib is now being used here.”

## **Only Liebherr in the fleet**

Daniel Correia, who is responsible for dismantling the mighty tower crane with his team, is also impressed by the performance of the new mobile crane. “We have to make do with a very small footprint for the crane here, but the LTM 1400-6.1 can still be used brilliantly.” Correia is the head of STME Grues, a company specialising in the assembly of large tower cranes with two sites south of Paris. “With around 25 employees, we have a great deal of experience in this segment. Our largest mobile crane, an LTM 1300-6.2, is too small for the job. This is why we’re cooperating with Montagrués here. At STME, we only have Liebherr cranes. We appreciate the quality of the machines as well as the reliable support.”

Montagrués has also been using only mobile cranes from Liebherr for decades. “Our fleet of around 40 machines ranges from 30-tonne cranes to the LTM 1450-6.1 and covers all lifting capacity classes in between. There are also numerous tractor units and around 30 trailers,” says Pereira. “We have had a close partnership with Liebherr for some 40 years now. The cranes from Ehingen are becoming more and more efficient and their jib lengths – extremely important for us here in Paris – are getting longer and longer. Liebherr also offers first-class after-sales service. For us, Liebherr is simply the best manufacturer of mobile cranes.”

## **About Liebherr-Werk Ehingen GmbH**

Liebherr-Werk Ehingen GmbH is a leading manufacturer of mobile and crawler cranes. Its range of mobile cranes extends from 2-axle 35 tonne cranes to heavy duty cranes with a lifting capacity of 1200 tonnes and a 9-axle chassis. Its lattice boom cranes on mobile or crawler travel gear deliver lifting capacities of up to 3000 tonnes. With universal boom systems and extensive additional equipment, they can be seen in action on construction sites throughout the world. The Ehingen site has a workforce of 5,000. An extensive, global service network guarantees the high availability of Liebherr mobile and crawler cranes. In 2025, the Liebherr plant in Ehingen recorded a revenue of 2.83 billion euros.

## **About the Liebherr Group**

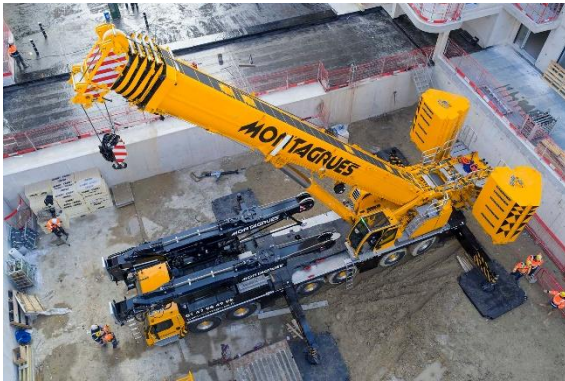
The Liebherr Group is a family-run technology company with a highly diversified product programme. The company is one of the largest construction equipment manufacturers in the world. It also provides high-quality, user-oriented products and services in a wide range of other areas. The Liebherr Group includes over 150 companies across all continents. In 2025, it employed more than 55,000 staff and achieved combined revenues of over 14 billion euros. Liebherr was founded by Hans Liebherr in 1949 in the southern German town of Kirchdorf an der Iller. Since then, the employees have been pursuing the goal of achieving continuous technological innovation, and bringing industry-leading solutions to its customers.

## Images



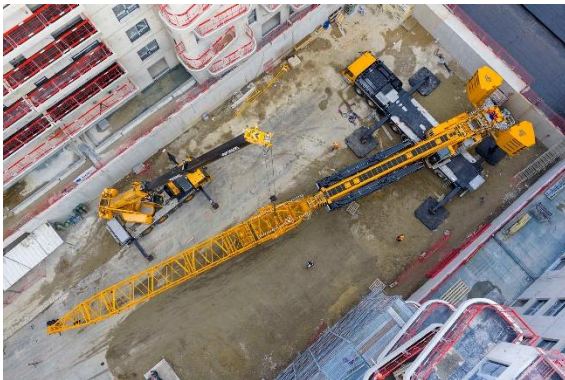
liebherr-ltm-1400-6-1-montagrues-01.jpg

With a single lift, the LTM 1400-6.1 places the Y-guying system on its undercarriage and can then ...



liebherr-ltm-1400-6-1-montagrues-02.jpg

... attach it fully automatically to the telescopic boom by luffing it down using the Solidlink quick coupling.



liebherr-ltm-1400-6-1-montagrues-03.jpg

The space on site was extremely limited. Also, for mounting the lattice jib using an LTM 1060-3.1, which is supported here via VarioBase®.



liebherr-ltm-1400-6-1-montagrués-04.jpg

“The quick assembly of the Superlift is a real innovative step,” says Daniel Pereira, Managing Director of Montagrués in Paris.



liebherr-ltm-1400-6-1-montagrués-05.jpg

Off we go: at a height of almost 80 metres, the fitters hang four ballast blocks of the construction crane on the hook block of the LTM 1400-6.1.



liebherr-ltm-1400-6-1-montagrués-06.jpg

A 28-metre-wide ravine in the building had to suffice as a crane site and for dismantling the large construction crane.



liebherr-ltm-1400-6-1-montagrues-07.jpg

The slewing ring and cab hang on the hook of the LTM 1400-6.1. The fixed lattice jib of the new 400-tonne crane can be set up to a length of 45.5 metres. The longest luffing jib measures an impressive 80.5 metres. This enables the mobile crane to reach lifting heights of up to 120 metres.

## Contact

Berenike Nordmann  
Marketing and Communication  
Tel: +49 7391 / 502-0  
E-mail: [berenike.nordmann@liebherr.com](mailto:berenike.nordmann@liebherr.com)

## Published by

Liebherr-Werk Ehingen GmbH  
Ehingen (Donau) / Germany  
[www.liebherr.com](http://www.liebherr.com)