

Press release

Greater safety and efficiency with retrofittable camera systems by Liebherr

- Liebherr provides a flexible retrofitting of mobile machinery with camera systems
- The new MDC4 camera generation brings with it an actively heated lens and a full HD image quality
- An AI-based person detection for the reduction of accidents on site is “the cherry on top”

With the LiXplore® camera system, Liebherr offers a high-performance solution for the retrofitting of mobile machinery – both for Liebherr machines up to Generation 4 and for machines of other manufacturers. The robust MDC4 camera generation with an actively heated lens delivers clear Full HD images even in freezing conditions, whilst the camera system offers an AI-based person detection for an active accident prevention.

Munich (Germany), May 4, 2026 – Whether in winter maintenance, waste management or street cleaning – a reliable all-round view is crucial, whenever large machines operate in confined spaces. This is precisely where Liebherr’s LiXplore® camera systems come into play: They help operators to always keep their surroundings in view and make work processes not only safer, but also more efficient.

For over ten years, Liebherr has been developing and manufacturing digital camera systems for mobile machinery and commercial vehicles at its site in Lindau (Germany). The solutions are specifically designed for demanding operating conditions – from poor lighting to low temperatures. The latest MDC4 camera generation, for instance, features active lens heating to ensure a clear view even under frosty conditions and enables the machine to start up quickly without long warm-up times. In daily use, the consistently high image quality is particularly impressive: Even in darkness or rapidly changing light conditions, the cameras deliver stable Full HD images. This makes it easier to navigate the working environment, supports precise maneuverings and helps to identify risks early on in order to prevent accidents.

“Machine operators in municipal applications bear a particular responsibility – for their own safety, as well as for their surroundings. Our aim is to support them with solutions that prove to make everyday work safer and function reliably under any operating conditions. With the MDC4 digital camera, we ensure that drivers have a clear surround view right from the start, even under changing light conditions or in frost,” explains Alexander Bertsch, head of the sensor technology product line at Liebherr-Electronics and Drives GmbH in Lindau.

The LiXplore® portfolio comprises various system solutions for different requirements: The 360° variant, LiXplore® Bird's Eye, combines multiple camera images to provide a complete surround view from a bird's-eye perspective. This allows driving routes and work areas to be comprehensively monitored, whilst enabling obstacles and people to be detected at an early stage. For applications focusing on individual areas, the LiXplore® CMS (camera-monitor systems) offer targeted and needs-based monitoring. The camera systems are complemented by LiXplore® Detect, an AI-based assistance function for person detection. The system monitors defined hazard zones in real time and visually alerts the machine operator, as soon as people are in the critical area. This allows potential hazards to be detected early, and accidents to be actively prevented.

The LiXplore® camera systems can be integrated into both new machine designs and existing vehicle fleets. For Liebherr machines, this option is available from Generation 4 models onwards. Furthermore, machines of other manufacturers can also be easily retrofitted. This provides operators with a flexible way to bring safety functions in both new and existing machines up to a uniform standard.

About Liebherr-Electronics and Drives GmbH

Liebherr-Electronics and Drives GmbH develops and manufactures high-quality components and products in the fields of electrical drive and control technology as well as electronics at two sites in Lindau and Biberach (Germany). In Lindau, the focus is on durable electronics for industry and aviation. The products are used worldwide in numerous machines within the Group. Numerous original equipment manufacturers outside Liebherr also rely on the company's cross-sector expertise. Testing and qualification services for electronics, Electronics Manufacturing Services (EMS) and development services complement the extensive portfolio.

About Liebherr-Components AG

In this segment, the Liebherr Group specialises in the development, design, manufacturing of high-performance components in the field of mechanical, hydraulic and electric drive and control technology. Liebherr-Component Technologies AG, based in Bulle (Switzerland), coordinates all activities in the Components product segment.

The extensive product range includes combustion engines, injection systems, engine control units, axial piston pumps and motors, hydraulic cylinders and piston accumulators, slewing bearings, gearboxes and winches, electric drive and energy storage systems, electronic and power electronics components, as well as software. The high-quality components are used in building construction and civil engineering, machinery and plant construction, mining, tunnelling, agriculture and forestry, wind industry, as well as maritime applications. Synergy effects in other product segments of the Liebherr Group are used to drive continuous technological development.

About the Liebherr Group

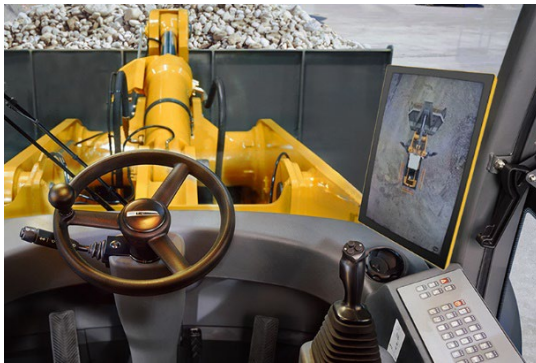
The Liebherr Group is a family-run technology company with a highly diversified product programme. The company is one of the largest construction equipment manufacturers in the world. It also provides high-quality, user-oriented products and services in a wide range of other areas. The Liebherr Group includes over 150 companies across all continents. In 2025, it employed more than 55,000 staff and achieved combined revenues of over 14 billion euros. Liebherr was founded by Hans Liebherr in 1949 in the southern German town of Kirchdorf an der Iller. Since then, the employees have been pursuing the goal of achieving continuous technological innovation, and bringing industry-leading solutions to its customers.

Images



liebherr-digital-camera-system.jpg

The LiXplore® digital camera-monitor system enables detailed monitoring of the working area, as well as a convenient 360° surround view.



liebherr-lixplore-birds-eye.jpg

The fully digital camera system offers a 360° surround view from a bird's-eye perspective and supports the early detection of potential hazards.

Contact

Alexandra Nolde
Senior Communication & Media Specialist
Phone: +41 56 296 4326
Email: alexandra.nolde@liebherr.com

Published by

Liebherr-Components AG
Baden, Switzerland
[LiXplore® camera systems for work machines and vehicles - Liebherr](#)