

Press release

## **Powerful and sustainable: Liebherr wheel loaders at IFAT 2026**

---

- **Battery-electric wheel loader and medium-sized wheel loader at the Liebherr main stand**
- **L 507 E: Thanks to its electric drive, no local CO<sub>2</sub> emissions and low noise levels**
- **L 546: Robust lift arms, powerful performance and versatile attachments**
- **The 100,000<sup>th</sup> Liebherr wheel loader, featuring a special paint finish and exclusive decals, will be on display in the outdoor exhibition area**

**At this year's IFAT, the world's leading trade fair for water, wastewater, waste and raw materials management in Munich (Germany), Liebherr is presenting a battery-electric stereoloader and a mid-sized wheel loader. As the group's first electrified wheel loader, the L 507 E combines the proven advantages of a conventional stereoloader with a battery-electric drive concept developed by Liebherr. With the L 546, Liebherr is also showcasing a representative of the mid-sized wheel loader range at the Liebherr exhibition stand. The robust lift arms enable maximum breakout, holding and retraction forces – ideal for demanding applications such as recycling. Intelligent assistance systems ensure additional efficiency and safety in this machine class. A particular highlight is the 100,000<sup>th</sup> Liebherr wheel loader, which can be seen as the anniversary machine in the outdoor exhibition area.**

Munich (Germany), May 4, 2026 – Visitors to the trade fair will find the battery-electric L 507 E wheel loader at the Liebherr stand (hall C5, stand 151). Its performance is identical to that of conventionally powered Liebherr wheel loaders in the same size class; however, it emits no CO<sub>2</sub> onsite. In addition, noise emissions are kept to a minimum, which makes the wheel loader particularly suitable for any application where you have to consider noise or exhaust fumes, for example at recycling centres in city centres or in the halls of recycling companies.

Liebherr relies on a high-voltage battery system – specially developed for L 507 E wheel loader applications – which ensures powerful performance and efficient charging. Depending on the respective operating conditions, the L 507 E offers a running time of up to eight hours. Liebherr's modular battery design also makes it possible to install a second lithium-ion battery ex works at the customer's request, which further increases the running time. Depending on the on-board charging technology and power rating, the battery can be fully charged in about one and a half to three hours.

## **Alternative drive, renowned steering system: L 507 E battery-electric stereoloader**

With the 507 E, the battery-electric drive means that full power is available at all times. The operator thus benefits from dynamic working movements and responsive handling. As standard, the wheel loader has a final speed of 20 km/h. However, the L 507 E is also optionally available as a “Speeder” and in this version reaches a speed of up to 30 km/h, making it easier to move from one job site to another. To increase efficiency, the energy generated downhill and during braking is fed back into the battery through recuperation.

The L 507 E is based on the conventional Liebherr L 507 stereo wheel loader. This means that the battery-electric wheel loader also features stereo steering. This combination of articulated steering and steered rear axle combines the advantages of conventional articulated steering with those of all-wheel steering. This results in a minimal turning circle and a reduced articulation angle of 30 degrees, which increases the stability of the wheel loader. Liebherr has also installed its reputable articulated pendulum joint in the L 507 E, which compensates for uneven ground and ensures that the wheel loader has excellent stability.

## **Powerful and versatile: mid-sized wheel loader with a strong lift arms and Z-kinematics**

As demonstrated by the L 546 wheel loader at IFAT, the latest Generation 8 of mid-sized wheel loaders impresses with particularly powerful lift arms featuring Z-kinematics. This results in fast cycle times and dynamic working movements during material handling – even with heavy attachments such as high-tipping buckets in recycling applications. Liebherr offers numerous equipment options for the lift arms for industry-specific challenges: High-Lift lift arms, for example, are an extended variant of the z-bar kinematics and ensure greater range and efficient loading processes at all heights – such as when loading waste containers or lorries with high dropsides.

For wheel loader applications that regularly require different attachments, there is a view-optimised quick coupler and the fully automatic quick-coupler system Solidlink. This allows operators to switch safely and quickly between mechanical and hydraulic attachments at the touch of a button from the cab. This saves time and reduces the risk of accidents. The L 546, which is on display at the trade fair, is equipped with intelligent assistance systems. These include active personnel detection with brake assistant and the Skyview 360° camera system. Both systems detect potential hazards at an early stage and warn operators via visual and audible signals.

## **100,000 reasons to celebrate: the anniversary wheel loader L 550 XPower at IFAT**

A special highlight is the 100,000<sup>th</sup> Liebherr wheel loader: an L 550 XPower wheel loader in a special dark blue paint finish, which has been handed over to STORK Umweltdienste GmbH. The anniversary machine symbolises over three decades of trusting cooperation between Liebherr, STORK and the sales partner Kurt König. The “100,000” lettering, composed of historical black-and-white images, traces the development of Liebherr wheel loaders – from the first prototypes of the 1950s and 1960s right through to the latest machines – thus linking tradition with the present. Visitors can see the impressive anniversary wheel loader for themselves and view this milestone on four wheels in the outdoor exhibition area (C56.8).

## About Liebherr-Werk Bischofshofen GmbH

Liebherr-Werk Bischofshofen GmbH develops, manufactures and markets the wheel loaders of the Liebherr Group. Located in the Salzburg region (Austria), the plant has grown steadily over decades through sustainable innovation, creative solutions and high quality standards. The wheel loader range is constantly being expanded and comprises models in various product groups: compact loaders and stereo loaders, as well as medium-sized and large wheel loaders, which impress with their innovative drive concepts.

## About the Liebherr Group

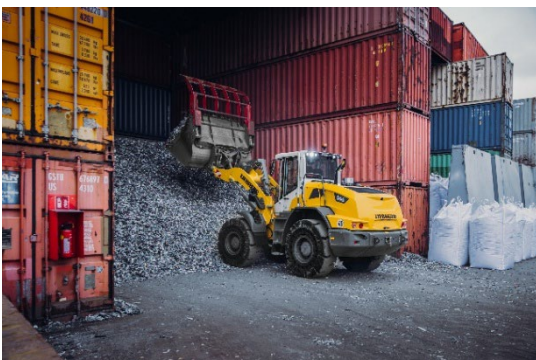
The Liebherr Group is a family-run technology company with a broadly diversified product range. The company is one of the world's largest manufacturers of construction machinery. However, it also offers high-quality, customer-oriented products and services in many other fields. Today, the Group comprises over 150 companies across all continents. In 2025, it employed more than 55,000 people and generated a consolidated total turnover of over 14 billion euros. Liebherr was founded by Hans Liebherr in 1949 in Kirchdorf an der Iller, southern Germany. Since then, the employees have pursued the goal of impressing their customers with sophisticated solutions and contributing to technological progress.

## Images



liebherr-l507e-battery-electric-wheel-loader.jpg

Zero local CO<sub>2</sub> emissions: Liebherr's L 507 E is suitable for noise- and emission-sensitive applications, such as in indoor environments.



liebherr-l546-midsized-wheel-loader-recycling.jpg

The mid-sized L 546 wheel loader impresses with powerful lift arms and dynamic working movements.



liebherr-jubilee-wheel-loader-100000.jpg

A milestone on wheels: The 100,000<sup>th</sup> Liebherr wheel loader is on display in the outdoor exhibition area.

## Contact

Anna Zögernitz  
Marketing and Public Relations  
Telephone: + 43 50809 12195  
Email: [anna.zoegernitz@liebherr.com](mailto:anna.zoegernitz@liebherr.com)

## Published by

Liebherr-Werk Bischofshofen GmbH,  
Bischofshofen, Austria\_  
[www.liebherr.com](http://www.liebherr.com)