

Press release

Powerful attachments from Liebherr at IFAT 2026

- Liebherr sorting and multi-tine grapples especially for waste management and recycling
- New at IFAT: Liebherr multi-tine grapple GMM 20-5
- Liebherr quick coupling system and stick extension for a wide range of applications and more flexibility
- Visitors can see attachments statically and live in action on site

At IFAT 2026, the world's leading trade fair for water, sewage, waste and raw materials management, taking place in Munich from 4 to 7 May 2026, Liebherr will exhibit on a 406 m² stand in Hall C5, Stand 151, presenting material handling solutions tailored to waste management and recycling applications. The display includes powerful material handlers, a selection of sorting and multi-tine grapples, and attachments designed to enhance operational efficiency. A key highlight is the new Liebherr multi-tine grapple GMM 20-5, which can be seen for the first time at IFAT. The portfolio is rounded off by the proven Liebherr Solidlink quick coupling system and a Liebherr stick extension.

Munich (Germany), May 4, 2026 – At IFAT, Liebherr will present a broad portfolio of attachments designed for waste management and recycling applications. On the hall stand, visitors can view a range of static exhibits, including the new GMM 20-5 multi-tine grapple, the SG 20B sorting grapple and the Solidlink quick coupling system. In the demo area, selected attachments will be shown live in action, giving visitors the opportunity to experience the GMM 35 and GM 55B multi-tine grapples, the SG 20B and SG 30B sorting grapples, as well as a stick extension under real operating conditions.

Powerful Liebherr multi-tine grapples for the highest demands in recycling

Liebherr multi-tine grapples are developed for demanding operating conditions in recycling and scrap handling applications. A comprehensive range of shell shapes, versions and optional features provides the flexibility to handle a wide variety of materials efficiently and economically. The grapple shells are optimised for reliable penetration and secure holding of bulky yet loose material, supporting consistent performance in challenging environments. They are available with open, semi-closed and closed shells, allowing customers to select the most suitable configuration for their application. At IFAT, Liebherr will be exhibiting three multi-tine grapples from its portfolio: the GMM 20-5, GMM 35 and GM 55B.

As the successor to the GM 55B and the smallest multi-tine grapple of Liebherr's new generation, the GMM 20-5 is a key highlight on the Liebherr indoor stand. Designed for demanding applications, the grapple combines high load capacity with exceptional stability, delivering reliable performance and a long service life. This durability is achieved through a range of technical refinements, including a securely bolted piston rod bearing. Available to order from the end of 2026, the GMM 20-5 offers clear

performance improvements thanks to its revised shell design. By optimising the shell geometry, Liebherr has increased the shell volume by 100 litres to 0.5 m³, without increasing the external opening dimensions.

As standard, the GMM 20-5 is equipped with a generously dimensioned rotary motor. An optional rotary actuator with two rotary motors is also available, a configuration that is particularly required when specifying the centralised lubrication option. A defining feature of the GMM 20-5 is the availability of three different centralised lubrication variants, a solution that represents a unique highlight within this grapple class. Large, flow-optimised oil channels enable high working speeds and contribute to efficient operation. In addition, the rotary connection, reinforced rotary actuator, piston rod protection, bearing points and shell bearings are sealed multiple times, effectively reducing wear and minimising the ingress of dirt.

Liebherr sorting grapples for efficient loading and material separation tasks

Liebherr sorting grapples are designed for efficient and precise recycling operations. They feed sorting, shredding and processing systems, separate a wide variety of recyclable materials sensitively and accurately and ensure a fast and effective loading process. They are equipped with an endless turning device and, in addition to their extremely robust design, have a high closing force. The range comprises four size classes, each available with three different shell versions to suit the machine type, application and material being handled. Shell options include perforated, ribbed or closed designs.

The SG 20B sorting grapple exhibited at IFAT is designed for machine classes in the 14 to 20 tonne range. It features 800 mm long perforated shells and a handling capacity of up to 0.4 m³. Equipped with HD undercut blades, hose protection, lashing eyes and fully automatic centralised lubrication via an integrated pump, the SG 20B is engineered for maximum efficiency and durability in tough day-to-day operating conditions. The SG 30B sorting grapple is designed for machine classes between 20 and 35 tonnes and offers a long service life thanks to its robust construction. The grapple has a 1,000 mm long, perforated gripper and achieves an impressive capacity of 0.85 m³. Equipped with hose protection, lashing eyes and fully automatic central lubrication via an integrated pump, the SG 30B guarantees maximum reliability and minimum maintenance.

Quick coupling system for efficient replacement and greater reach thanks to stick extension

With Solidlink, Liebherr is presenting its proven, fully automatic quick coupling system, which enables the uncomplicated and safe replacement of mechanical and hydraulics attachments directly from the operator's cab. Mechanical, hydraulic and electrical connections can be disconnected and recoupled in just a few simple steps. This significantly increases efficiency and safety during use.

In addition to this, Liebherr will be showing a stick extension that transforms material handlers into versatile multifunctional machines. They can be mounted without complex conversions and substantially increase the working radius, allowing operators to reach more remote areas without repositioning the machine. Available in various sizes and lengths — including 2.25 m, 2.5 m, 2.7 m and 3.0 m — Liebherr stick extensions are offered either with tilting kinematics or as a variant for suspended tools, delivering increased reach and flexibility across a wide range of applications. The stick extensions can be used in

combination with Solidlink holders SWA 33 and SWA 48. This configuration requires pipe rupture protection on the lift, stick and bucket tipping cylinders.

About the Liebherr Group

The Liebherr Group is a family-run technology company with a highly diversified product portfolio. The company is one of the largest construction equipment manufacturers in the world. It also provides high-quality, user-oriented products and services in a wide range of other areas. The Liebherr Group includes over 150 companies across all continents. In 2025, it employed more than 55,000 staff and achieved combined revenues of over 14 billion euros. Liebherr was founded by Hans Liebherr in 1949 in the southern German town of Kirchdorf an der Iller. Since then, the employees have been pursuing the goal of achieving continuous technological innovation and bringing industry-leading solutions to its customers.

Images



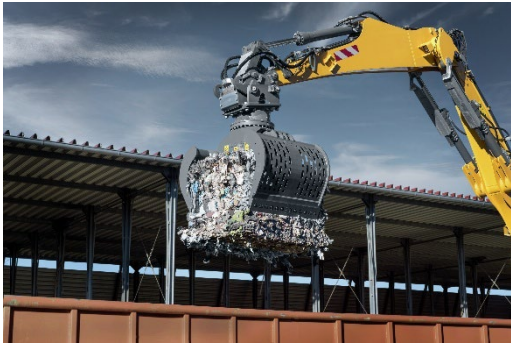
liebherr-gmm20-5-ifat.jpg

Designed for the highest demands in recycling: the new Liebherr GMM 20-5 multi-tine grapple.



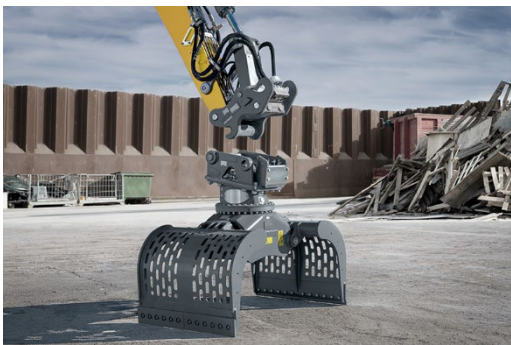
liebherr-gmm35-ifat.jpg

The special and robust shell shape of Liebherr multi-tine grapples enables optimum penetration and safety when handling bulky, loose recycling material.



liebherr-sg25b-ifat.jpg

Liebherr sorting grapples enable efficient recycling processes through precise separation, high closing force and robust construction.



liebherr-solidlink-ifat.jpg

The proven, fully automatic Solidlink quick coupling system from Liebherr enables the safe and fast replacement of attachments directly from the operator's cab.

Contact

Marc Wiedenmann

Marketing

Phone: +49 7354 / 80 - 8494

Email: marc.wiedenmann@liebherr.com

Published by

Liebherr-Hydraulikbagger GmbH

Kirchdorf/Iller, Germany

www.liebherr.com