

Press release

Parts Assistant: the easy way to identify and order maintenance and spare parts

- **New mobile app Parts Assistant provides Liebherr customers with AI-supported parts recognition – free of charge**
- **Over 100 different languages available for text searches**
- **Intuitive support for maintenance planning, featuring listing of scheduled maintenance intervals including a pre-populated shopping basket for parts ordering**

Parts Assistant is a digital application designed to simplify parts identification and maintenance preparation for Liebherr deep foundation machines, duty cycle and crawler cranes up to capacities of 400 tonnes. The app combines AI-powered part recognition with a listing of due maintenance intervals and addresses a long-standing operational challenge: fast, error-free ordering of the right parts at the right time.

Nenzing (Austria), May 28, 2026 – The core of the app Parts Assistant is an AI-based parts identification function. Users can identify components via photo recognition or by text search in more than 100 languages, by scanning the QR code, by entering an item number or a combination of all. This functionality allows immediate identification even when nameplates become damaged or unreadable through time. Additionally, results can be cross-checked using the official Liebherr parts catalogue, giving increased reassurance of the correct parts. Developed with direct input from operational users, the application supports all maintenance parts requirements quickly and easily to ensure rapid and optimum ordering.

Complementing part identification

The second main function focuses on timely ordering of maintenance parts. The app helps users by listing the actual operating hours of the machines and the respective service kits for the next regular maintenance interval. By selecting a forthcoming maintenance, the app displays a list of required parts, service materials and fluids – and all in the optimised quantity. This list can be adapted based on operational needs and then be placed as an order with a simple click.

Parts Assistant represents a next level of work simplification for our customers,' says Florian Markert, Product Manager at Liebherr. 'By simplifying and accelerating parts identification directly on the machine we are helping maintenance teams to focus on the machine maintenance itself rather than the administration.'

Cross-check with professionals

An additional feature, expert check, addresses situations where operational certainty is required. If users are unsure whether the identified component is correct, the app allows them to submit a verification request directly to the responsible Liebherr service partner. The request is processed via a dedicated service ticket, ensuring professional confirmation without interrupting on-site work.

The app has already received strong feedback during the preceding trial phase. Users involved in testing reported noticeable time savings, fewer ordering errors and improved transparency when preparing maintenance activities across machine fleets. Based on this response, Liebherr has made the app broadly available free of charge to all its customers.

'We have seen very constructive feedback from customers who participated in the trial phase, and we are pleased to be able to provide this work-simplifying tool to the wider market now,' Florian Markert adds. 'We are continuously expanding its functionality and scope, based on operational requirements and technological progress.'

Liebherr has developed the application for deep foundation, duty cycle and crawler cranes (up to 400 tonnes), as well as its range of mobile harbour, ship and offshore cranes. This cross-sector approach underlines Liebherr's broader strategy of applying digital solutions consistently across its wide product portfolio. With Parts Assistant, Liebherr positions digital service tools as a practical benchmark rather than a showcase – aimed at measurable efficiency gains and forward-looking maintenance processes in global construction. Parts Assistant is available globally via App Store (iOS) and Google Play (android) and can be used free of charge by customers with a valid MyLiebherr business account.

Further Information: [Parts | Liebherr deep foundation](#)

About the Liebherr Group

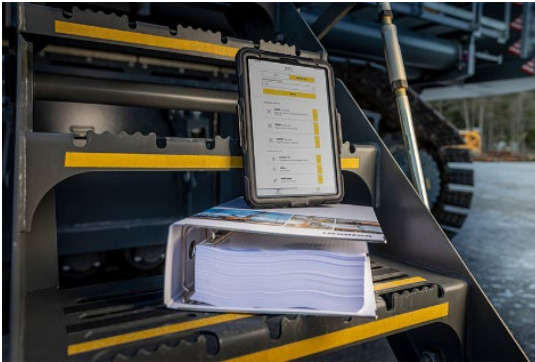
The Liebherr Group is a family-run technology company with a highly diversified product programme. The company is one of the largest construction equipment manufacturers in the world. It also provides high-quality, user-oriented products and services in a wide range of other areas. The Liebherr Group includes over 150 companies across all continents. In 2025, it employed more than 55,000 staff and achieved combined revenues of over 14 billion euros. Liebherr was founded by Hans Liebherr in 1949 in the southern German town of Kirchdorf an der Iller. Since then, the employees have been pursuing the goal of achieving continuous technological innovation and bringing industry-leading solutions to its customers.

Images



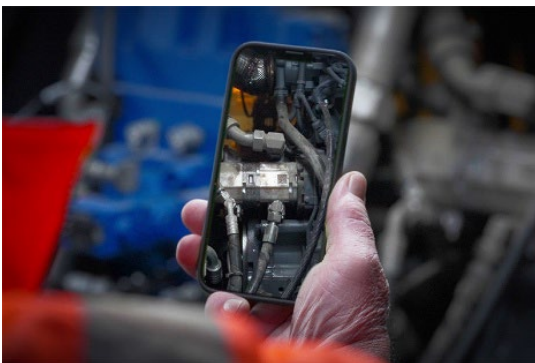
Liebherr-parts-assistant-1.jpg

With the app Part Assistant, parts can be identified with a picture directly on the machine.



liebherr-parts-assistant-2.jpg

Fleet maintenance made easy with prelisted parts as required.



liebherr-parts-assistant-3.jpg

Parts can be identified immediately also with QR code.

Contact

Mhairi Fischer
Marketing Construction Machines
Email: mhairi.fischer@liebherr.com

Ralf Meier
Head of Marketing Construction Machines
Phone: +43 690 500 44704
Email: ralf.meier@liebherr.com

Published by

Liebherr-Werk Nenzing GmbH
Nenzing/Austria
www.liebherr.com