

Press release

Four BOS-cranes shipped for gas project in Azerbaijan

- The shipment included two BOS 2600 and two BOS 4200 board offshore cranes
- The four cranes were shipped end of 2022 by the cargo ship "E-ship 1" to Baku, Azerbaijan
- All cranes are electro-hydraulically driven and equipped with Liebherr Litronic, a Liebherr control system for precise crane operation

Liebherr-MCCtec Rostock GmbH successfully shipped two BOS 2600 and two BOS 4200 offshore cranes to the Umid Babek Operating Company (UBOC) in Azerbaijan. The delivery marks Liebherr Rostock's first offshore crane shipment to Azerbaijan. The local Liebherr service station in Baku will manage the crane installation and service on site.

Rostock (Germany), February 2023 – Liebherr-MCCtec Rostock GmbH recently delivered four new offshore cranes of the Board Offshore Crane (BOS) series to the Umid Babek Operating Company (UBOC) for their Umid-2 gas project in Azerbaijan. The order includes two BOS 2600 with a maximum lifting capacity of 45 tonnes as well as two BOS 4200 which can lift 50 tonnes.

"This was a technically very demanding project that met the high safety requirements of the oil and gas industry. The successful delivery is a testament to Liebherr's expertise and professionalism," comments Stefan Schneider, Liebherr Global Application Manager General Purpose Offshore Cranes. "We were very pleased with the successful cooperation. The collaboration involving the technical clarification and commercial negotiations in the run-up, to the conclusion of the contract and final delivery, was characterised by great professionalism and a goal-oriented approach on both sides," Schneider continues.

The Umid Babek Operating Company was also very satisfied with the cooperation. "We deliberately chose a renowned manufacturer like Liebherr to benefit from its expertise in crane technology. All our expectations about project management, delivery reliability, and quality were met in full," quotes Tural Humbatov, Project Delivery Manager at Umid Babek Operating Company.

Reliable BOS Cranes with On-Site Service

The BOS series is known for its modular design with standardised components and high reliability. Umid Babek Operating Company chose these cranes because they offer a proven design with many advantages, including the possibility for flexible on-site customer service through Liebherr's local service network. The crane design is certified by the American Bureau of Shipping (ABS) and meets the requirements of the API design code. Both cranes, the BOS 2600 and the BOS 4200, have a lattice boom with a maximum outreach of 48 metres on the main hoist and 53 metres on the auxiliary hoist. They are electro-hydraulically driven and equipped with Liebherr Litronic, a control system for precise

crane operation.

Liebherr in Azerbaijan

The four cranes were shipped end of 2022 by the cargo ship "E-ship 1", which is equipped with two Liebherr ship cranes and four Flettner rotorsails. "On this basis, as well as through the support of the local Liebherr company, we will be able to further expand Liebherr's position in Azerbaijan," adds Stefan Schneider. Liebherr-Azeri, located in the capital of Baku, was founded in 2009 for the growing market in Azerbaijan. The sales, distribution and service organization is responsible for all maritime cranes as well as mobile and crawler cranes, tower cranes, hydraulic cable dredgers, special underground construction machines, and products from Liebherr's concrete technology.

About Liebherr-MCCtec Rostock GmbH

Liebherr-MCCtec Rostock GmbH is one of the leading European manufacturers of maritime handling solutions. The product range includes ship, mobile harbour and offshore cranes. Reach stackers and components for container cranes are also included in the product portfolio.

About the Liebherr Group

The Liebherr Group is a family-run technology company with a broadly diversified product range. The company is one of the largest construction machinery manufacturers in the world. However, it also offers high-quality, user-oriented products and services in many other areas. Today, the group comprises more than 140 companies on all continents. In 2021, it employed more than 49,000 people and generated a total consolidated turnover of over 11.6 billion euros. Liebherr was founded in 1949 in Kirchdorf an der Iller in southern Germany. Since then, the employees have pursued the goal of convincing their customers with sophisticated solutions and contributing to technological progress.

Images



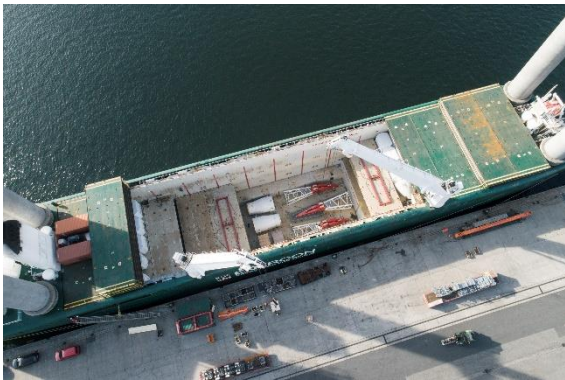
liebherr-bos-cranes-azerbaijan-uboc-1

Liebherr-MCCtec Rostock GmbH recently delivered four new offshore cranes of the Board Offshore Crane (BOS) series to the Umid Babek Operating Company (UBOC) for their Umid-2 gas project in Azerbaijan.



liebherr-bos-cranes-azerbaijan-uboc-2

The four cranes were shipped end of 2022 by the cargo ship "E-ship 1," which is equipped with two Liebherr ship cranes and four Flettner rotorsails.



liebherr-bos-cranes-azerbaijan-uboc-3

The local Liebherr service station in Baku will manage the crane installation and service on site.

Contact

Philipp Helberg
Tel: +49 381 6006 5024
Email: Philipp.helberg@liebherr.com

Published by

Liebherr-MCCtec Rostock GmbH
Rostock / Germany
www.liebherr.com