

Press release

Seven in action: Liebherr cranes build residential and business district near Paris

- 340 EC-B 12, 340 EC-B 16 and 205 EC-B 10 cranes in operation
- Over 500 apartments planned for the new area
- District incorporates historic water supply system from the Palace of Versailles

A new residential district is being built on historic ground not far from Versailles. The area, known as “Parc du Lac”, features a canal from the 17th century; a remnant of the Palace of Versailles' former water supply system. Liebherr tower cranes have been hard at work on the buildings' construction.

Voisins-le-Bretonneux (France), 1 December 2023 – An eco-friendly residential district with energy-efficient buildings, a rainwater treatment system, and a local recreation area is currently being built on ten hectares of land not far from the lake “Lac de la Sourderie” in the French municipality of Voisins-le-Bretonneux.

Housing, retail stores and public facilities are planned

Seven Liebherr tower cranes handled the movement of panels, concrete parts and formwork: one 340 EC-B 16, three 340 EC-B 12s and three 205 EC-B 10s. These all have blue and red paintwork to match the colours of the construction company responsible, Cobat Constructions. The buildings are due to be completed in 2024 and will then provide space for over 500 apartments, commercial premises and public facilities including a crèche, a community centre and a sports centre.

Hook heights from 40 to 75 metres

Work began in April 2021 and the cranes arrived on site in June 2022. The highest hook height measured in at 75 metres with a maximum jib length of 52.68 metres (340 EC-B 12) while the lowest hook height was 40 metres (205 EC-B 10). The shortest jib length used on site was 36.16 metres (340 EC-B 12).

The cranes are designed to lift up to 16 tonnes (340 EC-B 16) and twelve tonnes (340 EC-B 12). Both crane models achieve the same maximum hook height (84.7 metres) and radius (78 metres). The 340 EC-B 16 has a lifting capacity of 2,100 kilograms at maximum radius, while the 340 EC-B 12 can lift a further 300 kilograms.

The 205 EC-B 10 is able to work at a maximum height of 68.2 metres and is capable of lifting up to ten tonnes. It can reach a maximum radius of 65 metres and is able to lift up to 2,100 kilograms at its jib head.

Historic canal at the heart of the district

Parc du Lac is situated in the Île-de-France region, 25 kilometres from Paris and ten kilometres from Versailles. The canal that runs through the neighbourhood is a remnant of the former water supply system used for the Palace of Versailles' gardens. The well-preserved historic system once featured a network of around 200 kilometres of canals and aqueducts that channelled rainwater from the surrounding lakes to the palace's basins and fountains. It utilised primary and secondary canals and was the only system of its kind in the world at that time. Today, the remaining canal forms the heart of the Parc-du-Lac district.

About the Liebherr Tower Cranes Division

More than seven decades of experience have made Liebherr a recognised specialist for lifting technology on all types of construction sites. The range of Liebherr Tower Cranes encompasses an extensive selection of high-quality tower cranes that are used worldwide. This includes fast-erecting, top-slewing, luffing jib and special-purpose cranes as well as mobile construction cranes. In addition to these products, Liebherr also offers a wide range of services that complete the company's portfolio: Tower Crane Solutions, the Tower Crane Center and Tower Crane Customer Service.

About the Liebherr Group

The Liebherr Group is a family-run technology company with a highly diversified product portfolio. The company is one of the world's largest manufacturers of construction machinery. It also offers high-quality, user-oriented products and services in multiple other areas. Today, the group consists of more than 140 companies across all continents. In 2022, it employed more than 50,000 people and achieved combined revenues of over 12.5 billion euros. Liebherr was founded in 1949, in Kirchdorf an der Iller in southern Germany. Ever since then, the company's employees have been committed to satisfying customers with advanced solutions and to helping drive technological progress.

Images



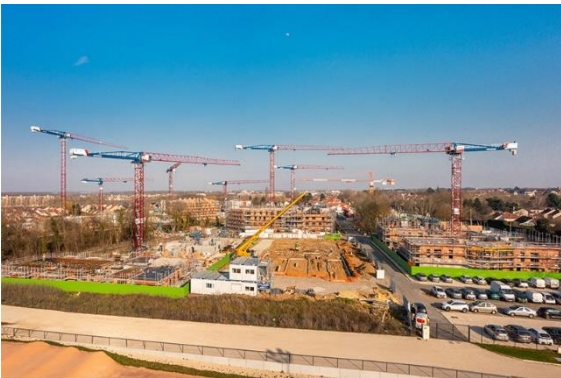
liebherr-ec-b-parc-du-lac-cobat-constructions-01

Seven Liebherr tower cranes were in operation at the site until autumn 2023.



liebherr-ec-b-parc-du-lac-cobat-constructions-02

The residential area has a park right on its doorstep, and the lake “Lac de la Sourderie” is close by.



liebherr-ec-b-parc-du-lac-cobat-constructions-03

The district will include residential buildings as well as sports facilities and commercial space.



liebherr-ec-b-parc-du-lac-cobat-constructions-04

All seven cranes have blue and red paintwork to match the colours of the construction company Cobat Constructions, which is based in Méru, north of Paris.

Contact

Astrid Kuzia
Communication Specialist
Phone: +49 7351 / 41– 4044
E-Mail: astrid.kuzia@liebherr.com

Published by

Liebherr-Werk Biberach GmbH
Biberach / Germany
www.liebherr.com