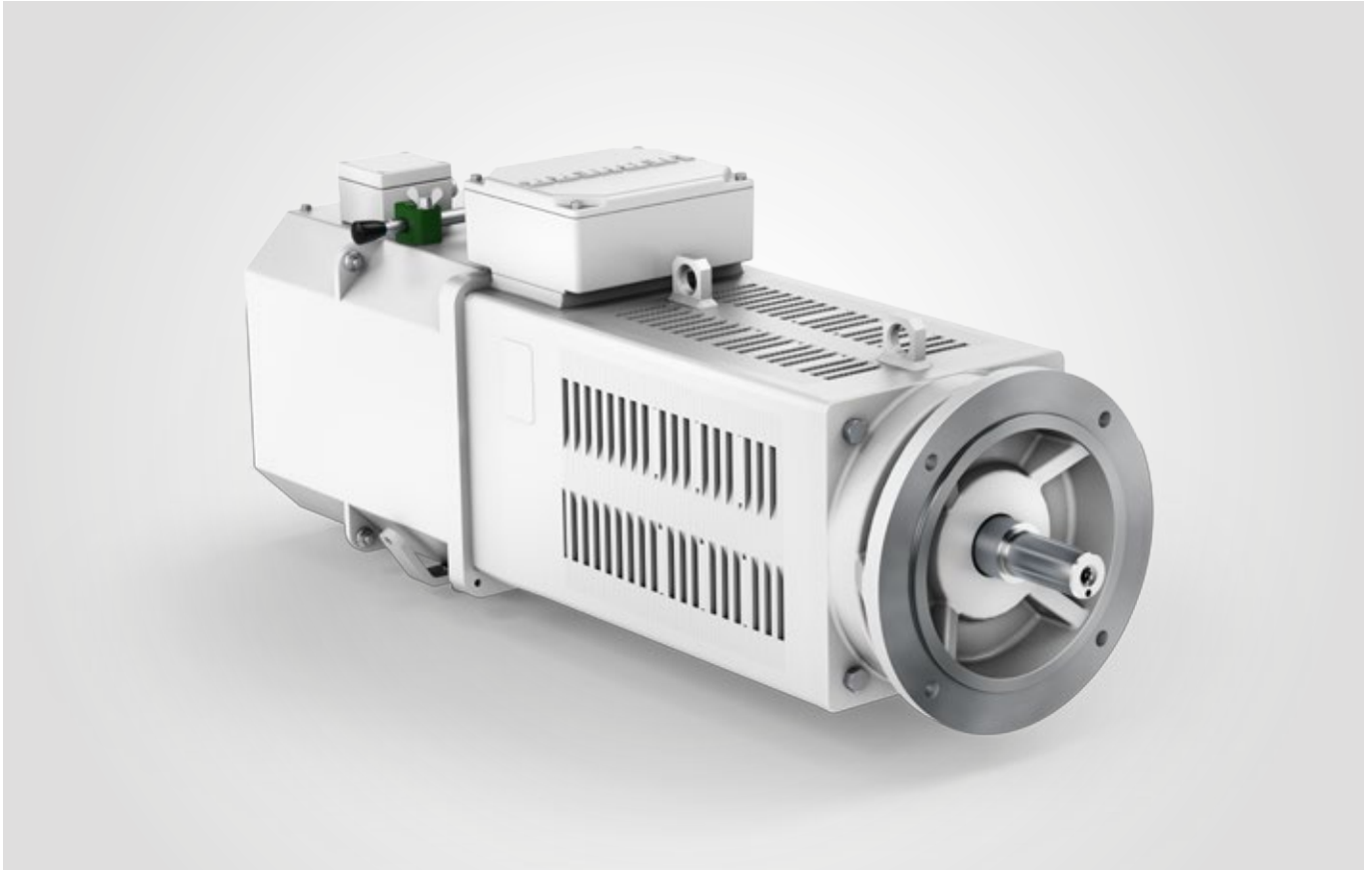


Short description

Electric motor KGF 681



For decades, asynchronous special motors from Liebherr have been a reliable and successful companion in numerous winding gear applications.

As a result of being designed without a housing and due to the associated compact dimensions, the motors can even be used under highly space limited installation conditions.

The frame size 132 currently marks the lower end of Liebherr's product range of asynchronous special motors. The provision of up to 18 kW across an extensive adjustment range from 799 to 5,983 rpm enables the motors to be used for a wide range of applications.

Features:

- Adjustment range from 799 to 5,983 rpm (factor 7.5)
- Special motor even for small power ranges
- Extremely compact dimensions as a result of being designed without a housing

Date: 21.11.2016

Version: 01

Technical Data

Electric motor KGF 681

Technical Data

Type	Special motor	
Design	Three-phase asynchronous motor	
Series	KGF 681 / 4	
Frame size	132	
Protection class	IP 44	
Insulation category	F	
Rated power	18 S3 60% kW	
Rated voltage	Y 325/Y 360 V	I Δ 325/Δ 360
Rated frequency	28/70 Hz	I 48.5/202 Hz
Rated current	41.3/35.4 A	I 47.2/33.8 A
cos φ	0.89/0.91	I 0.73/0.91
Rated speed	799/2,012 rpm	I 1,434/5,983 rpm
Nominal torque	215.2/85.4 Nm	I 119.9/28.7 Nm
Ambient temperature	-20 °C / +40 °C	
Approval	CE	
Type	B5	
Weight	259 kg	
Moment of inertia	ca. 0.131 kgm ²	
Diameter of flange	300 mm / 230 mm / 265 mm	
DE Shaft	Ø38 x 80 mm	

Torque-speed curve

