

In situ (online)  
water concentration determination with  
LIEBHERR Litronic-FMS III and coaxial tube  
sensor type RMH-12

# Job- Report

## Application:

- Water concentration determination also in very low ppm ranges in different emulsions (e.g. diesel, gear and hydraulic oil).
- Measurements in several test and laboratory plants (e.g. test loops for water separation in diesel-fuel filters).
- In situ determination of water concentration, fast alternating results.
- Easy installation.



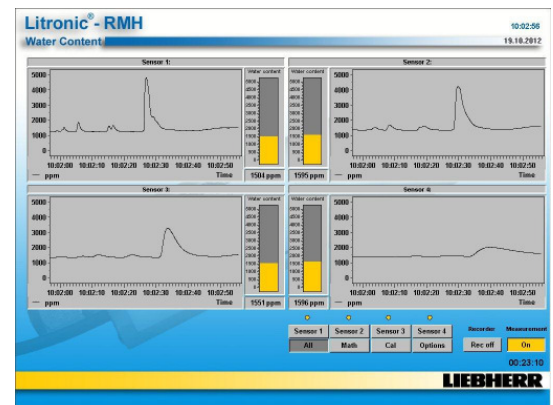
Litronic-FMS III coaxial tube sensor  
type RMH-12.

## Selection / Solution:

- Looking for and fixing of a good installation place.
- Selection of suitable LIEBHERR water concentration / moisture measurement system FMS III with coaxial tube sensor, electronic module, software and further accessories.
- Installation at measurement point with data recording.
- Parameterization with start-up direct at the plant.

## Customer's benefit:

- Measurement of complete liquid „In-Situ“ 30 times per second.
- Stable, extremely high measuring results up to 3 ppm.
- Automatically zero adjustment and operation check.
- Graphic visualization, data logging.
- Ethernet connectivity.
- Precisely temperature measurement integrated.
- High-resolution medium temperature compensation.
- Easy Installation in DN12 pipes with Ermeto screw connection.
- Pressure up to 6 bar.
- Samplings and offline analyses can be omitted.



Litronic-FMS III Software

## Installation examples:



Upon request we would be glad to send further information or references.