

Instructions

Liebherr grease analysis - grease withdrawal for large-diameter slewing bearings

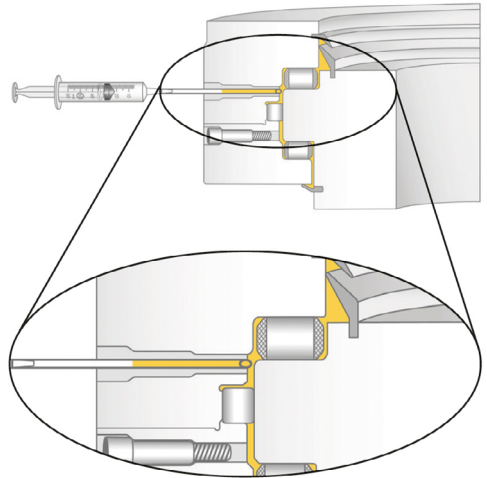
This grease analysis set is specially designed for grease sampling and grease analysis for Liebherr slewing bearings. The set enables early detection of wear, bearing damage, and quality analysis of the lubricant. As a consequence, bearing damage can be avoided or replacement bearings can be ordered in time.

Grease removal with the syringe:

The grease is removed from the extraction holes provided for this purpose. Those are closed during operation. If possible the tapping points should be on the raceways in the main load range. To achieve best results, samples should be taken from several points of the bearing and, later on, mixed up in the sample vessel. Optionally, up to four fat samples can be taken via the scope. These must be marked accordingly.

Application:

- The tip of the hose must be cut at an angle of 45°.
- Grease deposited in the withdrawal bore must first be removed with a suitable tool.
- Clean the environment of the tapping point with the contained cleaning rags.
- The hose is placed on the syringe cone and e.g. tucked through the relubricant opening instead of the grease nipple.
- The 45° cutting surface must be cut against the direction of rotation.
- Do not suck too much air into the hose. The hose is then pulled off, bent in the middle, and put (bent upwards) into the sample vessel.
- As long as the syringe is not contaminated by lubricant or dirt, it can be used several times.



Grease removal with a spatula:

If sample collection with the syringe is not possible, a spatula can be used – avoid using screwdrivers or similar sharp-edged tools.

Application:

- First of all, the heavily soiled grease is removed from the bearing or the seal.
- Clean the environment of the tapping point with the contained cleaning rags.
- Mix the fat with the spatula or, in the case of slow rotation, to obtain an ideal reference sample to receive.
- Ensure by visual control that only fat is taken that is to be analyzed.
- Wipe the grease from the spatula onto the bottle neck of the sample vessel or into its lid.

Set contents:

- 100 ml container + gray lid (welded in)
- Sampling syringe
- 3 hoses (each 1 piece of 8 × 6 × 1 mm, 10 × 8 × 1 mm, 14 × 10 × 2 mm)
- 3 spatulas
- Cleaning rags
- Instructions for grease removal
- Envelope
- UPS return label for Germany
- UPS instruction

We can make a thorough diagnosis if you send in a fresh sample of the used fat. For trend analysis, samples should always be taken at the same location with the same withdrawal procedure.

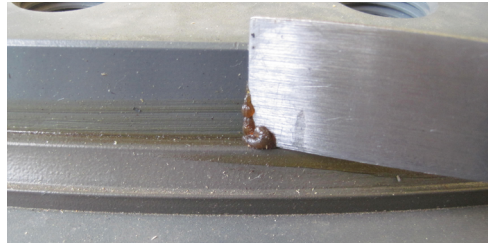
Do you need help taking samples?

Contact our customer service!

Customer Service Liebherr Components

☎ +49 7351 41 4999

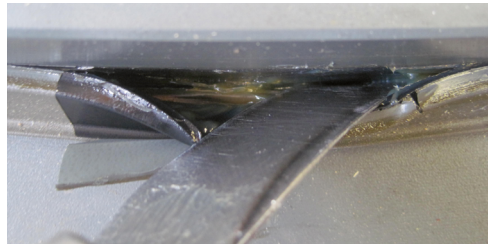
✉ CustomerService.cob@liebherr.com



Cleaning the sealing lip



Lifting the sealing lip



Grease removal with spatula



Sample with contaminated fat

Liebherr-Components AG

Post Box 222, CH-5415 Nussbaumen/AG

☎ +41 56 296 43 00, fax: +41 56 296 43 01
components.liebherr.com

✉ components@liebherr.com