

Disposal instruction

Liebherr Telematics Unit

LiTU3-Evo

LiTU3-Evo WLAN

2025-09-23

CustomerService.LED-TechnicalService@liebherr.com



Legal notices

Copyright and trademarks

All text, images, graphics or other image representations and their layout are protected by copyright (Copyright © Liebherr-Electronics and Drives GmbH, all rights reserved).

Without the express written permission of Liebherr-Electronics and Drives GmbH, the content of the documentation may not be copied, distributed, changed or made available to third parties for commercial purposes. Some of the contents used in this documentation are protected by third-party copyright.

Liebherr is a registered trademark.

Document history

Issue	Date	Revisions
01	2025-09-23	– First edition

Table of contents

1	Introduction	3
1.1	Purpose of the disposal instructions	3
2	Information about the fitted batteries	3
3	Disposal	3
3.1	Removing the batteries for disposal	4

1 Introduction

1.1 Purpose of the disposal instructions

This documentation is valid for the products listed in the following table.

Article code	Short description
12781966	LiTU3-Evo
12782528	LiTU3-Evo WLAN

Table 1: Validity of the documentation

Liebherr-Electronics and Drives GmbH is constantly improving its products through technical development. This document always describes the disposal of the most recent version of the product that has been developed.

Liebherr-Electronics and Drives GmbH reserves the right to change illustrations and descriptions in this documentation without prior information. This does not give the owner the right to have changes made to delivered products.

2 Information about the fitted batteries

Model Name	Type	Nominal Voltage [V]	Charge Voltage Standard [V]	Nominal Capacity [mAh]	Size Diameter [mm]	Size Height [mm]	Weight [g]
MS621T	MS Lithium Rechargeable Battery	3	2.8 to 3.3	3.0	6.8	2.1	0.23
N18650COP	Rechargeable Li-ion Cell	3.6	2.5 to 4.2	2500	18.6	65.1	48

Table 2: information about the button cell (Lithium battery (3)) and the main battery (Lithium battery (4))

3 Disposal

The product and all electronic parts included in the scope of delivery must not be disposed of with household waste.



After use, return the product and all electronic parts and devices included in the scope of delivery to the manufacturer or take them to a responsible collection point for waste electrical and electronic equipment.

Additional information on the URL <https://www.liebherr.com/electronics-documentation>.



This product contains lithium batteries.

When recycling, ensure that the batteries are removed from the product and recycled separately.

3.1 Removing the batteries for disposal

No special tools are required to remove the batteries.

To remove the batteries for disposal, the housing must be opened.

- Hold the LiTU3-Evo in your hands as shown in Figure 1. Press the two locking hooks ① on the top simultaneously with your thumbs and push them forwards.

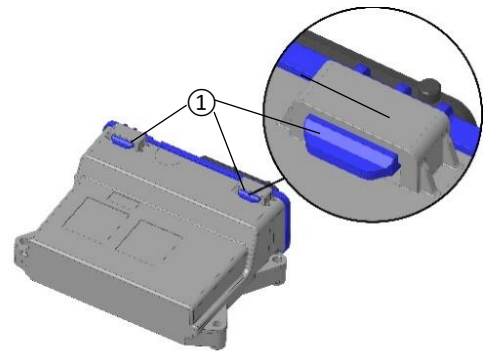


Figure 1: Locking hooks at the top

- Turn the LiTU3-Evo over and simultaneously press in the two locking hooks ② on the bottom side and push them forward.

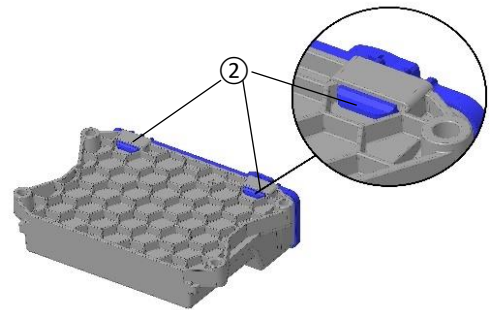


Figure 2: Locking hooks at the bottom

- Pull the front panel with the circuit board out of the housing.

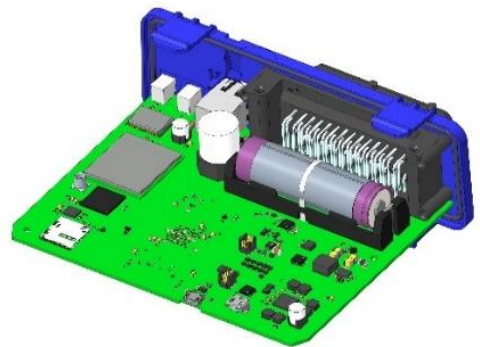


Figure 3: Removed circuit board



Note

The LiTU3-Evo is fitted with two lithium batteries.

The first battery ③ is only clamped in its socket.

- Press a suitable tool into the socket at one of the marked points and push the button battery ③ out of the socket.

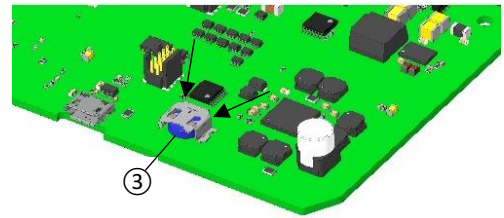


Figure 4: Lithium battery (3)

The second battery ④ is fixed in place with a cable tie.

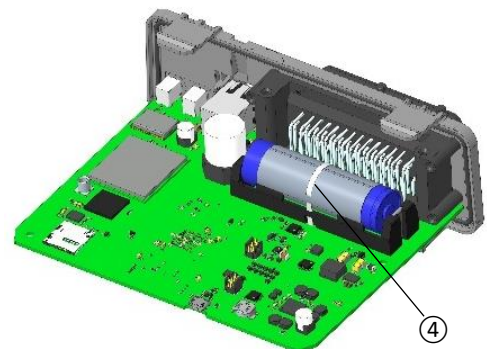


Figure 5: Lithium battery (4)



Note

Tools required

- Side cutter

- Turn over the circuit board, cut the cable tie ⑤ with a side cutter and remove it.

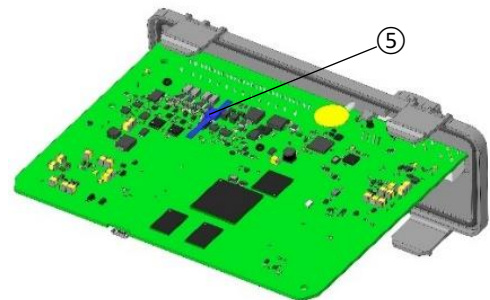


Figure 6: Cable tie on the bottom side

- Turn over the circuit board again and remove the transparent film from the battery ④ to create a tab ⑥ for gripping.

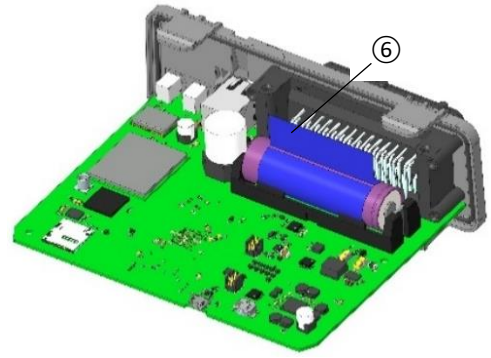


Figure 7 Tap for removing the battery

- Pull the battery ④ upwards by the tab ⑥ out of the socket.