

Disposal instruction

Mobile Communication Gateway

2025-10-21

CustomerService.LED-TechnicalService@liebherr.com



Legal notices

Copyright and trademarks

All text, images, graphics or other image representations and their layout are protected by copyright (Copyright © Liebherr-Electronics and Drives GmbH, all rights reserved).

Without the express written permission of Liebherr-Electronics and Drives GmbH, the content of the documentation may not be copied, distributed, changed or made available to third parties for commercial purposes. Some of the contents used in this documentation are protected by third-party copyright.

Liebherr is a registered trademark.

Document history

Issue	Date	Revisions
01	2025-08-01	– First edition
02	2025-10-21	– Title correction

Table of contents

1	Introduction.....	3
1.1	Purpose of the disposal instructions	3
2	Information about the fitted battery	3
3	Disposal	3
3.1	Removing the battery for disposal.....	4

1 Introduction

1.1 Purpose of the disposal instructions

This documentation is valid for the products listed in the following table.

Article code	Short description
10889540	Mobile Communication Gateway
12782864	Mobile Communication Gateway

Table 1: Validity of the documentation

Liebherr-Electronics and Drives GmbH is constantly improving its products through technical development. This document always describes the disposal of the most recent version of the product that has been developed.

Liebherr-Electronics and Drives GmbH reserves the right to change illustrations and descriptions in this documentation without prior information. This does not give the owner the right to have changes made to delivered products.

2 Information about the fitted battery

Model Name	Type	Nominal Voltage [V]	Charge Voltage Standard [V]	Nominal Capacity [mAh]	Size Diameter [mm]	Size Height [mm]	Weight [g]
MS621T	MS Lithium Rechargeable Battery	3	2.8 to 3.3	3.0	6.8	2.1	0.32

Table 2: Battery information

3 Disposal

The product and all electronic parts included in the scope of delivery must not be disposed of with household waste.

After use, return the product and all electronic parts and devices included in the scope of delivery to the manufacturer or take them to a responsible collection point for waste electrical and electronic equipment.

Additional information on the URL <https://www.liebherr.com/electronics-documentation>.



3.1 Removing the battery for disposal

The MCG is fitted with a Lithium battery. No special tools are required to remove the battery. To remove the battery for disposal, the housing must be opened.



Figure 1: MCG



Note

Necessary Tools

- Screw driver TX 8

- ▶ Loosen and remove the two screws 1 on the front of the MCG with a torx screw driver.

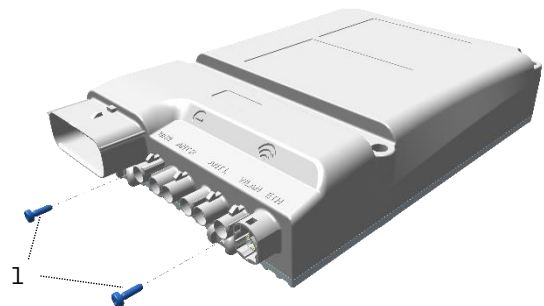


Figure 2: Screws (1)

- ▶ Loosen and remove the screw 2 in the back of the MCG from the top side with a torx screw driver.

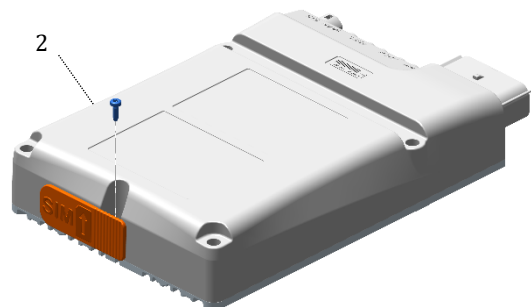


Figure 3: Screw (2)

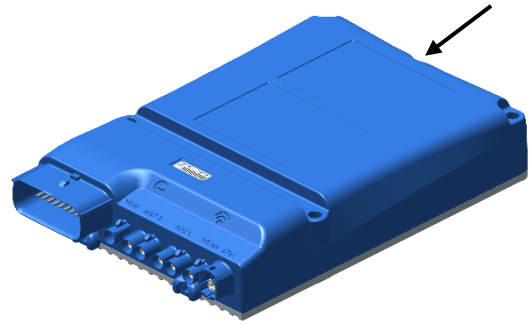


Figure 4: Pushing direction

- Slide the housing towards the front as far as possible (about 14 mm).



Figure 5: Position after pushing

- Lift the housing from the aluminium plate and put it aside.

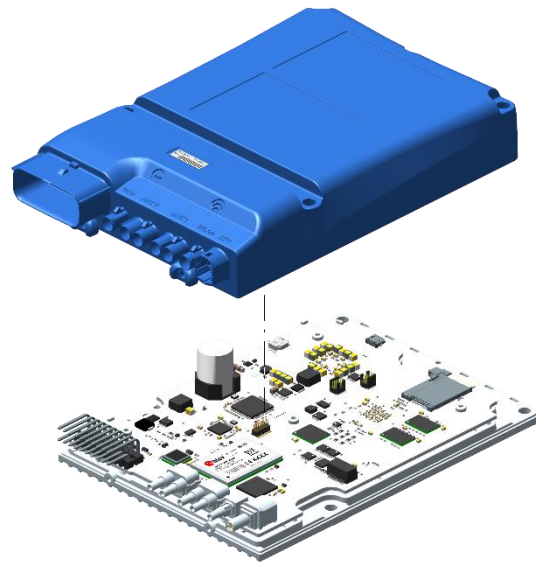


Figure 6: Lift the housing

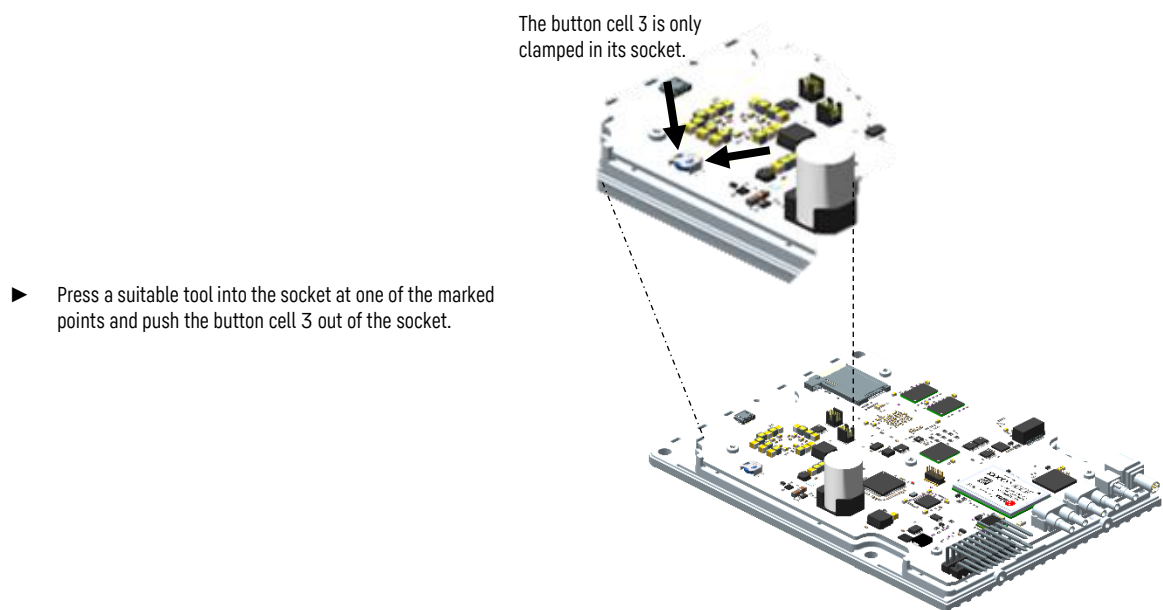


Figure 7: Button cell (3) in its socket

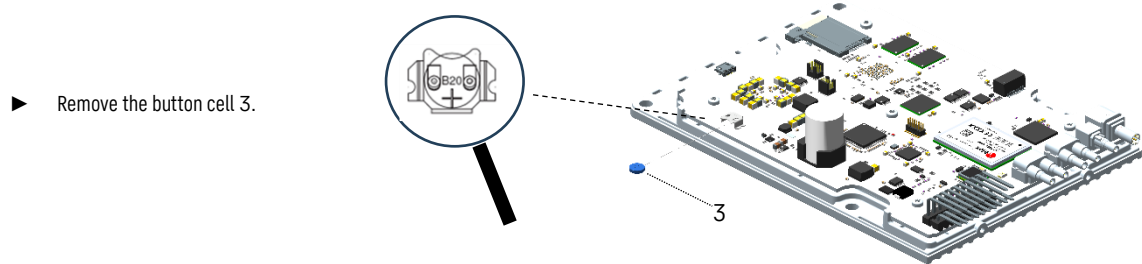


Figure 8: Button cell (3) removed