

Jobreport

Water concentration determination in test stand



Fig. 1 Litronic RMH evaluation and interchange unit

Application

- Water concentration determination also in very low ppm ranges in different emulsions (e.g. diesel, gear and hydraulic oil).
- Measurements in several test and laboratory plants (e.g. test loops for water separation in diesel-fuel filters).
- In situ determination of water concentration, fast alternating results.
- Easy installation.

Solution

- Looking for and fixing of a good installation place.
- Selection of suitable Liebherr water concentration / moisture measurement system FMS with coaxial tube sensor, electronic module, software and further accessories.
- Installation at measurement point with data recording.
- Parameterization with start-up direct at the plant.

Customer's benefit

- Measurement of complete liquid „In-Situ“ thirty times per second.
- Stable, extremely high measuring results up to 3 ppm.
- Automatically zero adjustment and operation check.
- Graphic visualization, data logging.
- Ethernet connectivity.
- Precisely temperature measurement integrated.
- High-resolution medium temperature compensation.
- Easy Installation in DN12 pipes with Ermeto screw connection.
- Pressure up to six bar.
- Samplings and offline analyses can be omitted.

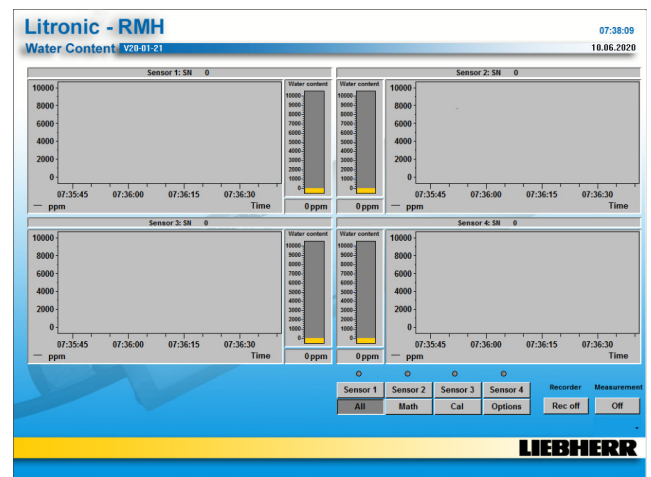


Fig. 2 Litronic RMH Software



Fig. 3 Tube sensor



Sensor integrated in a test stand to monitor the demulsification capacity of a diesel fuel.

Upon request, we would be glad to send further information or references.