

Specialist machines for timber handling

Material handling machines, electric material handling machines, wheel loaders, crawler tractors, telescopic handlers

LIEBHERR

Material handling machines



Liebherr specialist machines for timber handling

Regardless of whether it is used as a fuel, component or piece of furniture: Timber is a climate-friendly and popular all-rounder. For efficient timber handling Liebherr offers a broad portfolio of powerful and efficient specialist machines, which are ideal for typical operations such as loading and unloading trucks and trailers, sorting logs or transportation. In addition to different machine types and equipment versions, in reality this involves the interaction of powerful engines with an intelligent control system. Whether it is a material handling machine, wheel loader, crawler tractor or telescopic handler: The equipment enables the fast movement and agile manoeuvrability of the machines, as well as the precise and sensitive handling of the raw material, for example during grabbing and sorting. Liebherr manufactures all key components itself – from the diesel engine to the hydraulic system through to the steel structure – thus

guaranteeing the long service life of the components and maximum machine availability even in tough operating conditions. Protective measures for the subsoil and the headlights or mudguards made from hot-dip galvanised steel ensure the necessary robustness. Liebherr also focuses on the efficiency of these specialized machines, continuously optimises the interplay of the drive components and in addition to state-of-the-art diesel engines also offers electric material handlers.

- Material handling machines
- Electric material handling machines
- Wheel loaders
- Crawler tractors
- Telescopic handlers





Material handling machines



Performance

Loading and unloading trucks and trailers, sorting and stacking, as well as holding and transporting all types of timber, are some of the main activities in timber handling companies. Good driving performances, high load capacities, as well as fast working cycles, are required for these tasks. For instance, with the timber machines the optimised drive engine impresses with enhanced driving performance and less consumption. But also equipment such as the enclosed slewing mechanism circuit for the Liebherr machines ensures a high torque for maximum acceleration and quick rotary movements, thus providing the basis for efficient material handling operations. Furthermore, the optimal interplay of hydraulics and electronics allows powerful and fast movements during material handling, as well as sensitive and precise work for sorting timber.

Economy

The existing generation of material handling machines are powerful and efficient. Liebherr achieves this difficult balancing act with its own engine technology manufactured in-house and optimised to meet the requirements of controlled hydraulics. Liebherr relies on state-of-the-art engine technology here with intelligent machine controls that optimise the interplay of the drive components in terms of their degree of efficiency. Liebherr-Power Efficiency (LPE) enables machine operation in the area of the lowest specific fuel use. Combined with the innovative Liebherr energy recuperation system, which is a standard feature from machine class LH 40, fuel consumption is reduced to a minimum and, at the same time, material handling is significantly increased thanks to faster and more homogeneous operating cycles – for the lowest consumption and greater efficiency at maximum output.

Reliability

Liebherr material handling machines guarantee the necessary stability and with their robust and durable construction ensure smooth operations right across the timber industry. In order to optimally equip the machines for tough timber handling tasks, Liebherr offers a variety of protective devices, such as protection for the headlights, protection for the travel drive or also protection for the uppercarriage and the counterweight. Long service life along with maximum machine availability are assured thanks to the in-house production of all key components: diesel engine, hydraulic and electronic components, slew ring, swivel drive and steel structure, developed, tested and produced by Liebherr all at the high level of quality one would expect.

Comfort

The Liebherr cab gives the operator the necessary space and comfort to make the best possible use of his or her machine's capability. Large glass panels, different types of cab elevations and rear and side area monitoring give the operator an optimum view of the working area and the area around the machine at all times. In addition, the Comfort driver's seat, the intuitive touchscreen colour display and central lubrication systems for the machine and its attachment provide the necessary comfort for the operator to allow him or her to concentrate on what is important – the handling capacity.

Maintainability

The service-based machine design guarantees short servicing times, thus minimising maintenance costs. All the maintenance points are easily accessible due to the large, wide-opening service doors. The enhanced service concept places the maintenance points close to each other and reduces their number to a minimum. This means that service work can be completed even more quickly and efficiently.

Log loaders overview

Equipment

- High load capacities and extensive reach due to optimised kinematic properties and robust construction for greater handling performance
- Clever routing of hydraulic hoses optimises the oil flow and minimises power losses for maximum energy efficiency
- Pipe fracture safety valves on hoist and stick cylinders and retract stick shut-off for maximum safety during every application
- Tailor-made Liebherr wood grapple for greater handling performance due to optimum penetration effect and good clamping properties



Cab

- Slewing gear brake comfort for faster and safer work
- Less strain on the operator, workers and reduced environmental pollution due to lower noise emissions
- Simple and safe access due to new, space-saving access system with integrated steps and 10° inclination
- Standard proportional control with 4-way mini joystick for greater precision, high precision control and functions



Uppercarriage

- Greater fuel efficiency due to the latest engine technology with intelligent machine control
- Optimal engine output and greater pump flow for fast work cycles, convincing dynamics and maximum handling performance
- Reversible fan and large-meshed cooler as a reliable, sealed unit for high machine availability
- Optimized servicing concept and cleverly designed maintenance access points guarantees minimum machine downtime

Undercarriage

- Optimised hydraulics with closed slewing mechanism circuit for greater fuel efficiency and faster work cycles
- Maximum acceleration and higher drawbar pull due to a new travel motor for greater travelling performance
- Mudguards for greater safety due to max. splash protection for cab accesses and standing areas
- Standard four wheel steering setting for high agility and manoeuvrability combined with very good driving stability and improved directional stability

Technical data

		LH 26 Timber Litronic	LH 35 Timber Litronic	LH 50 Timber Litronic	LH 60 Timber Litronic
Variants		M	M	M	M
Reach	m	11	11	11	12
Operating weight*	kg	approx. 23,500 – 26,000	approx. 28,000 – 30,200	approx. 38,100 – 39,900	approx. 42,600 – 45,500
Engine output	kW/HP	125/170 129/175 (IIIA compliant)	150/204	170/231	200/272
Emission stage	Stage	V/Tier 4 Final/ IIIA (compliant)	V/Tier 4 Final/ IIIA (compliant)	V/Tier 4 Final/ IIIA (compliant)	V/Tier 4 Final/ IIIA (compliant)
Wood grab capacity	m ²	0.80 – 1.30	1.00 – 1.90	1.60 – 3.20	1.60 – 3.60

M = Mobile

* without attachment



Examples of use



Material handling machines overview

Equipment

- High load capacities and extensive reach due to optimised kinematic properties and robust construction for greater handling performance
- Energy recovery cylinder filled with nitrogen for maximum efficiency through less fuel consumption at more handling capacity from machine class LH 40 Industry
- Pipe fracture safety valves on hoist and stick cylinders and retract stick shut-off for maximum safety during every application
- Quick coupling systems and attachments made by Liebherr for maximum machine capacity utilisation and greater handling performance



Cab

- Joystick steering without steering column to facilitate convenient operation, greater legroom and clear view of the working area
- Less strain on the operator, workers and reduced environmental pollution due to lower noise emissions
- Optimum visibility thanks to large glass surfaces and standard rear and side area monitoring camera
- Standard proportional control with 4-way mini joystick for greater precision, high precision control and functions



Uppercarriage

- Greater fuel efficiency due to the latest engine technology with intelligent machine control
- Optimal engine output and greater pump flow for fast work cycles, convincing dynamics and maximum handling performance
- Reversible fan and large-meshed cooler as a reliable, sealed unit for high machine availability
- Optimized servicing concept and cleverly designed maintenance access points guarantees minimum machine downtime

Undercarriage

- Optimised hydraulics with closed slewing mechanism circuit for greater fuel efficiency and faster work cycles from machine class LH 30 upwards
- Central lubrication system manual or fully automatic for more productive working time
- Standard load holding valves fitted on all support cylinders for maximum stability in every application
- Less downtime thanks to maintenance free support cylinders

Technical data

		LH 22 Industry Litronic	LH 26 Industry Litronic
Variants		M/C	M
Reach	m	11	13
Operating weight*	kg	approx. 19,200 – 22,200	approx. 24,200 – 24,500
Engine output	kW / HP	105 / 143	115 / 157
System performance	kW	–	–
Emission stage	Stage	V / Tier 4 Final / IIIA (compliant)	V / Tier 4 Final / IIIA (compliant)
Wood grab capacity	m ²	0.50 – 1.30	0.80 – 1.30

		LH 30 Industry Litronic	LH 35 Industry Litronic
Variants		M/C	M
Reach	m	14	15
Operating weight*	kg	approx. 26,500 – 30,200	approx. 30,700 – 31,900
Engine output	kW / HP	140 / 190	140 / 190
System performance	kW	–	–
Emission stage	Stage	V / Tier 4 Final / IIIA (compliant)	V / Tier 4 Final / IIIA (compliant)
Wood grab capacity	m ²	1.00 – 1.90	1.00 – 1.90

		LH 40 Industry Litronic	LH 40 Port Litronic
Variants		M/C	M/C
Reach	m	16	18
Operating weight*	kg	approx. 36,400 – 40,900	approx. 41,100 – 50,300
Engine output	kW / HP	155 / 211	155 / 211
System performance	kW	237	233
Emission stage	Stage	V / Tier 4 Final / IIIA (compliant)	V / Tier 4 Final / IIIA (compliant)
Wood grab capacity	m ²	1.00 – 1.90	1.00 – 1.90

		LH 50 Industry Litronic	LH 50 Port Litronic
Variants		M / M HR / C HR	M HR / C HR
Reach	m	18	19
Operating weight*	kg	approx. 40,000 – 54,900	approx. 46,000 – 56,000
Engine output	kW / HP	155 / 211	155 / 211
System performance	kW	269	233
Emission stage	Stage	V / Tier 4 Final / IIIA (compliant)	V / Tier 4 Final / IIIA (compliant)
Wood grab capacity	m ²	1.00 – 3.60	1.00 – 3.60

M = Mobile
 C = Crawler
 M HR = Mobile High Rise
 M G = Mobile Gantry
 C HR = Crawler High Rise
 C G = Crawler Gantry
 * without attachment

		LH 60 Industry Litronic	LH 60 Port Litronic
Variants		M/M HR/C/C HR	M/M HR/C/C HR
Reach	m	20	23
Operating weight*	kg	approx. 52,000 – 75,800	approx. 59,900 – 77,300
Engine output	kW/HP	190/258	190/258
System performance	kW	334	322
Emission stage	Stage	V/Tier 4 Final/IIIA (compliant)	V/Tier 4 Final/IIIA (compliant)
Wood grab capacity	m ²	1.60 – 3.60	1.60 – 3.60

		LH 80 Industry Litronic	LH 80 Port Litronic
Variants		M/M HR/C/C HR/C G	M/M HR/C/C HR/C G
Reach	m	22	25
Operating weight*	kg	approx. 66,500 – 112,500	approx. 75,700 – 116,700
Engine output	kW/HP	230/313	230/313
System performance	kW	437	418
Emission stage	Stage	V/Tier 4 Final/IIIA (compliant)	V/Tier 4 Final/IIIA (compliant)
Wood grab capacity	m ²	1.60 – 3.60	1.60 – 3.60

		LH 110 Industry Litronic	LH 110 Port Litronic
Variants		M/M HR/C/C HR/C G	M/M HR/C/C HR/C G
Reach	m	24	27
Operating weight*	kg	approx. 95,000 – 128,000	approx. 100,000 – 130,000
Engine output	kW/HP	300/408	300/408
System performance	kW	492	478
Emission stage	Stage	V/Tier 4 Final/IIIA (compliant)	V/Tier 4 Final/IIIA (compliant)
Wood grab capacity	m ²	1.60 – 3.60	1.60 – 3.60

		LH 150 Industry Litronic	LH 150 Port Litronic
Variants		M/M HR/M G/C/C HR/C G	M/M HR/M G/C/C HR/C G
Reach	m	28	30
Operating weight*	kg	approx. 130,000 – 175,000	approx. 130,000 – 175,000
Engine output	kW/HP	400/543	400/543
System performance	kW	661	614
Emission stage	Stage	V/Tier 4 Final/IIIA (compliant)	V/Tier 4 Final/IIIA (compliant)
Wood grab capacity	m ²	1.60 – 3.60	1.60 – 3.60

Examples of use





Electric material handling machines



Performance

The electric-powered material handling range has been specially developed to deal with the arduous demands of industrial material handling. A large spectrum of equipment and an uppercarriage optimised for extensive reach makes it possible to cater for all timber handling requirements. With all of its major components manufactured in-house and combined with the power of an electric motor, the drive train output maximises the machine's performance in terms of lift capacity, precision and work pace. The scope of this high performing equipment is enhanced considerably due to a tracked undercarriage.

Reliability

Investing in an electric material handling design pays in the long term. Continually rising costs from conventional energies are a burden on operating costs and considerably reduce profit margins. Environmental factors and CO₂ emissions, in particular, are growing in importance with the choice of engines / motors and working methods. With the electric drive system, Liebherr offers an economically beneficial alternative to conventional machines and, moreover, an eco-friendly solution. Furthermore, the material handling machine is always available because refuelling is unnecessary as are particulate filters and AdBlue.

Economy

With more than 30 years of experience in designing electric material handling equipment, Liebherr developed the existing models EP 934 C, EP 944 C and EP 954 C to comply with every demand from the market. The layout of the machines was completely revised due to the components of the electric drive system, which means the unit is more than just a conversion of a conventional diesel drive machine. All of the important components of the electric drive system have been integrated in the existing exterior dimensions of the uppercarriage. Liebherr electric material handling machines offer a high level of reliability so that they can consistently fulfil their key functions when deployed in industrial areas. The already long service life of the hydraulic components is further enhanced by the low noise electric drive system. The drive concept, with just one electric motor, ensures that the high voltage is limited to the range of the switch cabinet and drive system, the low voltage functions are capable of being comprised in one terminal box.

Comfort

To allow the operator to concentrate optimally on his or her work and utilise the machine's maximum performance, all electric material handling machines feature an ergonomically designed driver's cab with a high level of comfort and good all-around vision. Thanks to low noise generation and the elimination of vibrations, the electric drive system provides greater comfort. For Liebherr, comfort also means easily accessible service and check points for all daily maintenance tasks on the machine in order to keep downtimes as minimal as possible.

Maintainability

The large, wide-open service door provides an optimal service access. All the daily maintenance points can be accessed conveniently and safely. Short service times for greater productivity.

Electric material handling machine overview

Large range of equipment

- Range of equipment which covers all requirements in timber handling
- Special design upon consultation (Live-heel)

Large range of attachments, including

- Wood grapple
- Quick coupler systems

Cab elevation

- Large range of fixed and hydraulically adjustable height adjustment devices
- Perfect view of the working area and surrounding area of machine





Cab with panoramic view

- Benefit of unique space with optimal view of working zone
- Rear and side access
- Can accommodate client supervision system

Access

- In series production, safety and comfort for accessing the workstation
- Secured anti-slip ladders

Electric motor

- Harsh environment conditions
- Constant speed whatever the load rating
- Integrated sensors for maximum availability

Integrated switchgear cabinet

- Designed to withstand even extreme environmental conditions
- Overpressure system to prevent ingress of dust
- Fastenings with standard padlocks
- Robust and durable

Spring base

- Absorption of dynamic loads in order to be able to operate the machine safely on one pillar over the long term
- Number of platforms based on size of machine
- Assembly kit for customer (for concrete, steel)

Technical data

		EP 934 C Handling	EP 944 C Handling	EP 954 C Handling
Reach	m	13 – 20	15 – 22	16 – 24
Operating weight	kg	39,100	51,900	64,500
Engine output	kW / HP	160 / 218	200 / 272	250 / 340
Wood grab capacity	m ²	0.80 – 1.70	1.30 – 2.50	1.70 – 4.00

		ER 934 C Handling	ER 944 C Handling	ER 954 C Handling
Reach	m	12 – 16	15 – 18	15 – 20
Operating weight	kg	38,050	52,050	75,400
Engine output	kW / HP	160 / 218	200 / 272	250 / 340
Wood grab capacity	m ²	0.80 – 1.30	1.10 – 2.10	1.30 – 2.30

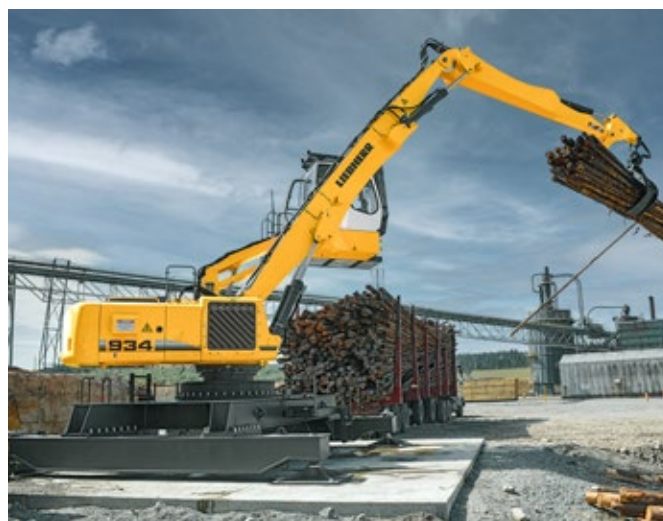
		ER 934 C High Rise	ER 944 C High Rise	ER 954 C High Rise
Reach	m	13 – 20	15 – 22	16 – 24
Operating weight	kg	56,200	73,400	95,800
Engine output	kW / HP	160 / 218	200 / 272	250 / 340
Wood grab capacity	m ²	0.80 – 1.70	1.30 – 2.50	1.70 – 3.60

		LH 26 Industry Litronic	LH 110 Industry Litronic	LH 110 Port Litronic
Variants		M / C	C / C HR / C G	C / C HR / C G
Reach	m	13	24	27
Operating weight*	kg	approx. 26,200 – 27,900	approx. 105,000 – 138,000	approx. 110,000 – 140,000
Engine output	kW	90	300	300
System performance	kW	105	492	478
Wood grab capacity	m ²	0.80 – 1.30	1.60 – 3.60	1.60 – 3.60

		LH 150 Industry Litronic	LH 150 Port Litronic	
Variants		M G / C / C HR / C G	M G / C / C HR / C G	
Reach	m	28	30	
Operating weight*	kg	approx. 135,000 – 185,000	approx. 135,000 – 185,000	
Engine output	kW	400	400	
System performance	kW	661	614	
Wood grab capacity	m ²	1.60 – 3.60	1.60 – 3.60	

M = Mobile
C = Crawler
M HR = Mobile High Rise
M G = Mobile Gantry
C HR = Crawler High Rise
C G = Crawler Gantry
* without attachment

Examples of use



Wheel loaders



Performance

A wide range of products ensures the versatile and universal use of Liebherr wheel loaders in the field of timber work. In addition to the different models, you can choose between industrial and Z-bar kinematics with the L 550 – L 566 XPower® wheel loaders and the L 580 XPower®. The Log-Handler XPower® with the specially designed lift arms enables high manipulation heights and extensive reaches. The ideal machine is available for specific tasks such as transporting and loading logs, chippings and small sticks of wood or feeding debarking and sorting machines. Such machine versatility ensures maximum efficiency and productivity.

Economy

The innovative drive concepts of the Liebherr wheel loaders make a fuel reduction possible of up to 30%. In addition there is minimal tyre wear and hardly any brake wear, at maximum handling capacity and efficiency, thus reducing operating costs and also protecting the environment.

Reliability

Liebherr wheel loaders satisfy Liebherr's exacting standards in even the toughest conditions. They feature many components which are produced in-house and are therefore perfectly tailored to work in synergy. This ensures machine reliability and availability.

Comfort

The modern, ergonomic cab design provides the operator with maximum comfort enabling them to concentrate on their work without fatigue, which once again means more safety and productivity. The Liebherr control lever allows precise and sensitive control of the machine. This ensures accurate and safe handling. The generous glass surfaces of the cab offer excellent all-round visibility thus ensuring maximum safety for people, the machine and the load.

Maintainability

The Liebherr wheel loaders offer excellent service accessibility. All points for daily maintenance can be reached safely and conveniently. A clear benefit which saves time and money!

Wheel loaders L 526 – L 580 XPower® overview

Maximum operator comfort for greater productivity

- Automatic central lubrication system (optional)
- Liebherr control lever with mini joystick (optional)
- Joystick steering or 2-in-1 steering (optional)
- Operator's cab without steering wheel / steering column – joystick steering only (optional)
- Liebherr weighing system with "Truck Payload Assist" (optional)
- Ride control (L 526 – L 546 optional / L 550 – L 580 as standard)
- Preparation for protective ventilation and dust filtrating device (optional)
- Stroke limit damping (optional)

Highest level of performance

- Industrial lift arm or Z-bar linkage (L 550 – L 566 and L 580 optional)
- High lift arms (optional)
- LIKUFIX quick hitch (L 526 – L 546 optional)
- Programmable automatic bucket return
- Programmable automatic lift and lowering arm position
- Comprehensive range of special equipment for timber handling (optional)
- Electronic tractive force regulation

Robustness and quality for durable machines

- Tilt cylinder protection (optional)
- Lamp carrier in steel design (L 526 – L 546 as standard / L 550 – L 580 optional)
- Guard for headlights (optional)
- Integral tyre pressure monitoring system (optional)
- Special tyres for timber handling (optional)





Productive and safe working

- Soundproof ROPS / FOPS cab
- Windscreen guard (optional)
- Additional working lights, front / rear (optional)
- Adaptive working lighting (optional)
- Roof camera for front area monitoring (with Liebherr camera via Liebherr display) (optional)
- Skyview 360° (optional)
- Visualisation of the equipment position
- Liebherr key with remote control incl. Coming Home / Leaving Home function (L 550 - L 580 optional)

Short service times for greater productivity

- Radiator easy to maintain
- Fluff trap for radiator (optional)
- Large-mesh radiator (optional)
- Reversible fan drive (optional)
- Air pre-cleaner (optional)
- Turbocharger insulation (L 550 - L 580 optional)
- Dust protection for alternator (optional)

Productive and safe working

- Anti-slip steps and sturdy handrails
- Rear space monitoring camera via Liebherr display
- Active personnel detection at the rear (optional)
- Reversing obstruction detector (optional)
- Back-up alarm acoustic / visual (optional)

Robustness and quality for durable machines

- Crash protection, rear (optional)
- Crash protection, rear with guard (L 526 - L 546 optional)
- Ramming guard with guard (L 550 - L 580 optional)
- Chassis protection (optional)
- Widening for mudguard (optional)

Wheel loader L 580 LogHandler XPower® overview

Robustness and quality for a durable machine

- Grapple with hydraulic stop damper horizontally to the driving direction
- Hoist cylinder protection
- Lamp carrier in steel design with additional lights and guard (optional)
- Log pusher hydraulically adjusted with additional deflector plates (optional)
- Integral tyre pressure monitoring system (optional)
- Special tyres for timber handling (optional)

Highest level of performance

- Robust and visually optimised special kinematic for timber handling allows higher stacking and greater ranges
- Various grapple versions and sizes with modular blade (optional)
- Powerful and efficient Liebherr-XPower driveline
- Electronic tractive force regulation

Maximum operator comfort for greater productivity

- Automatic central lubrication system
- Liebherr control lever, electro-hydraulically controlled, adjustable using Liebherr display
- Joystick steering (optional)
- Operator's cab without steering wheel / steering column – Joystick steering only (optional)
- Smooth Speed Reduction system (SSR-System) for lower load on lift arm
- Ride control





Productive and safe working

- Soundproof ROPS / FOPS cab
- Windscreen guard mounted on lift arm
- Grapple monitoring with camera on display (optional)
- Headlights LED inside the arm
- Headlights LED on the arm (double design inside and outside; single design on front carriage) (optional)
- Additional headlights at rear of cabin roof (optional)
- Liebherr key with remote control incl. Coming Home / Leaving Home function (optional)

Short service times for greater productivity

- Radiator easy to maintain
- Fluff trap for radiator (optional)
- Large-mesh radiator (optional)
- Reversible fan drive (optional)
- Air pre-cleaner (optional)
- Turbocharger insulation (optional)
- Dust protection for alternator (optional)

Productive and safe working

- Anti-slip steps and sturdy handrails
- Rear space monitoring camera via Liebherr display
- Active personnel detection at the rear incl. brake assistant (optional)
- Reversing obstruction detector (optional)
- Back-up alarm acoustic / visual (optional)
- LogHandler special ballast (no water filling of tyres required)

Robustness and quality for a durable machine

- Crash protection, rear (optional)
- Ramming guard with guard (optional)
- Widening for mudguard (optional)

Technical data

		L 507 Stereo	L 509 Stereo	L 514 Stereo
Tipping load	kg	3,490 – 3,750	4,200 – 4,430	4,075 – 5,750
Bucket capacity	m³	0.9 – 1.6	1.2 – 2.0	1.4 – 3.5
Operating weight	kg	5,550 – 5,730	6,390 – 6,465	8,860 – 9,985
Engine output	kW / HP	50 / 68	54 / 73	76 / 103
Emission stage	Stage	V	V	V

		L 518 Stereo	L 526	L 538
Tipping load	kg	5,025 – 6,550	5,030 – 8,730	6,220 – 9,650
Bucket capacity	m³	1.5 – 4.0	2.0 – 5.5	2.2 – 6.5
Operating weight	kg	9,190 – 10,445	13,170 – 14,770	14,520 – 16,050
Engine output	kW / HP	76 / 103	116 / 158	129 / 175
Emission stage	Stage	V	V	V

		L 546	L 550 XPower®	L 556 XPower®
Tipping load	kg	7,130 – 11,010	9,800 – 12,500	11,000 – 13,750
Bucket capacity	m³	2.6 – 7.5	3.1 – 9.0	3.4 – 10.0
Operating weight	kg	15,410 – 16,970	18,550 – 20,500	19,600 – 21,500
Engine output	kW / HP	138 / 188	163 / 222	183 / 249
Emission stage	Stage	V	V	V

		L 566 XPower®	L 580 XPower®
Tipping load	kg	12,100 – 15,900	14,800 – 19,500
Bucket capacity	m³	3.5 – 12.0	4.5 – 14.0
Operating weight	kg	23,900 – 26,900	27,650 – 30,100
Engine output	kW / HP	203 / 276	233 / 317
Emission stage	Stage	V	V

		L 580 LogHandler XPower®
Tipping load	kg	8,590 – 8,750
Bucket capacity	m³	3.2 – 3.8
Operating weight	kg	36,630 – 36,750
Engine output	kW / HP	253 / 344
Emission stage	Stage	V

Examples of use



Crawler tractors



Performance

The trademarks of the Liebherr crawler tractors are power and innovative technology. The successful balance of operating weight and engine output ensures the maximum level of machine productivity. In various applications, such as paper mills or power plants, the Liebherr crawler tractor exceeds the industry expectations with its superior performance for customers.

Economy

Exceptional dozing power with low fuel consumption are guaranteed by the powerful Liebherr designed diesel engine integrated with the hydrostatic travel drive concept. The crawler tractor is highly cost efficient, since it has the easily accessible service points and an ordering system for spare parts, when needed. These features promote the cost efficiency benefit for customers, while increasing their job productivity.

Reliability

Liebherr crawler tractors are designed to have an extensive service life. A varied ranged of application specific attachments serve to protect the machine and operator. These components assist in lowering the customer's maintenance time and costs, and to extend the life of the machine.

Comfort

The crawler tractor also allows the operator to have space and comfort during operations. The cab also provides the operator with a comprehensive view of the work area and equipment to ensure safety. The lever system grants the operator full and precise control of the machine. This concept of comfort provides customers the guarantee of productive work operations.

Maintainability

Liebherr crawler tractors have minimal maintenance needs, but integrate easily accessible service areas when needed. The service concept lowers the customer's maintenance time and cost.

Crawler tractors overview

Contamination protection

- Dust filter system supplies the cab with fresh air, filtered multiple times
- Pre-cleaning of engine intake air by an additional separator
- Sealings around engine compartment prevent the contamination of debris into the base machine
- Sealings between base machine and cab prevent dirt from accumulating in cavities and niches and also from entering the cab
- Automatically reversible fan for automatic blowing out of the radiator / engine compartment
- External air flow to alternator ensures that cooling air is always filtered
- Belly pans with openings make it easier for wood shavings that enter the base machine to fall out
- Radiator guard with fine-mesh grille prevents the ingress of wood chips in the radiator compartment



Application attachments

- High-capacity wood chip blade with openings for enhanced visibility



Safety

- Catwalk for comfortable access to diesel filler neck, compartments and oil cooler
- Protective covers on engine hood, cab roof and oil cooler provide protection against falling objects
- Hydraulic oil thermometer to monitor the oil temperature and to warn against the risk of overheating
- Fire extinguisher in the cab (optional installation of an automatic fire-fighting system)
- Fire protection on turbocharger prevents the combustion of wood chips in the engine compartment

Durably designed equipment

- Track shoes with trapezoidal holes reduce material build-up between bushings and sprocket
- Sprocket segments with recesses also help to remove accumulating material

Technical data

		PR 736 Litronic	PR 736 Litronic
Operating weight	kg	20,000 – 24,900	21,200 – 25,500
Blade capacity (wood chip blade)	m³	12.7	17.6
Counterweight	kg	1,990	1,990
Engine output	kW / HP	160 / 217	160 / 217
Emission stage	Stage	IIIA (compliant) / Tier 3	V / Tier 4 Final

		PR 746 Litronic	PR 746 Litronic
Operating weight	kg	25,900 – 31,500	25,900 – 31,500
Blade capacity (wood chip blade)	m³	20.6	20.6
Counterweight	kg	3,175	3,175
Engine output	kW / HP	190 / 258	190 / 258
Emission stage	Stage	IIIA (compliant) / Tier 3	V / Tier 4 Final

		PR 756 Litronic	PR 756 Litronic
Operating weight	kg	35,400 – 43,000	35,400 – 43,000
Blade capacity (wood chip blade)	m³	30.8	30.8
Counterweight	kg	4,000	4,000
Engine output	kW / HP	260 / 353	260 / 353
Emission stage	Stage	IIIA (compliant) / Tier 3	V / Tier 4 Final

		PR 766 Litronic	PR 766 Litronic
Operating weight	kg	16,225 – 54,187	53,460 – 54,333
Blade capacity (wood chip blade)	m³	47.4	47.4
Counterweight	kg	4,950	4,950
Engine output	kW / HP	310 / 422	310 / 422
Emission stage	Stage	IIIA (compliant) / Tier 3	V / Tier 4 Final

Examples of use



Telescopic handlers



Performance

The tried-and-tested hydrostatic travel drive with infinitely variable acceleration without shifting gear and good manoeuvrability guarantees quick work processes even in limited spaces. The construction machine can be used universally and is solid from the ground up. It is designed for maximum performance in various applications. High load capacities, intuitive operation and high performance components allow the driver to complete his work quickly and reliably.

Economy

The Liebherr telescopic handlers are all-rounders that make a decisive contribution to the efficiency of your vehicle fleet. Many different optional attachments allow universal use and increased utilisation of the machines. Top performance, low fuel consumption and minimum maintenance guarantee economy throughout the service life of the machine.

Reliability

Robust and reliable: as characterised by Liebherr telescopic handlers. Advanced technology with high-quality materials and build quality guarantee maximum availability. A high level of utilisation and value is guaranteed in the long term.

Comfort

The cab of the telescopic handler from Liebherr is an ideal workplace. It provides an excellent all-around view, has a spacious interior, provides a safe working environment, and its ergonomic controls allow relaxed and productive operation.

Maintainability

At Liebherr, superior service is more than a promise, it is a guarantee to every customer. Several production facilities and an extensive service network for construction equipment means close proximity, and fast response times.

Technical data

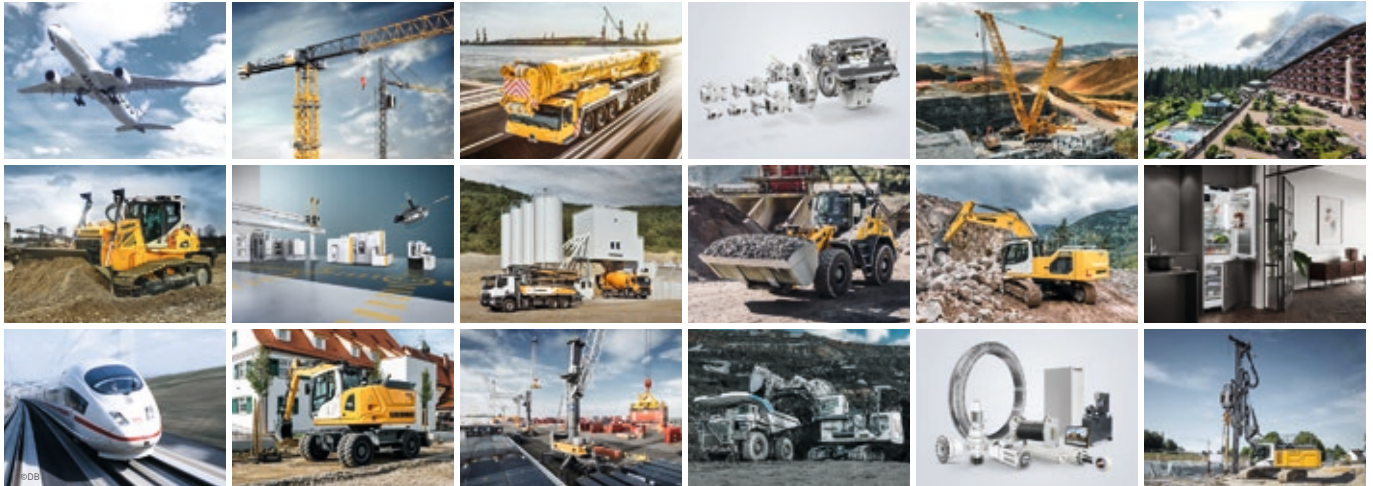
		T 35-6	T 32-7	T 36-7
Operating weight with standard fork, without operator	kg	7,320	7,280	7,310
Max. lift capacity	kg	3,500	3,200	3,600
Max. lift height	mm	6,132	6,925	6,925
Overall height ¹	mm	2,465	2,465	2,465
Overall width over standard tyre ¹	mm	2,327	2,327	2,327
Wheelbase ¹	mm	2,750	2,750	2,850
Rear overhang ¹	mm	784	784	784
Track gauge ¹	mm	1,920	1,920	1,920
Outside turning radius over tyres ¹	mm	3,812	3,812	3,906
Ground clearance (mid of vehicle) ¹	mm	405	405	405
Engine output	kW / HP	100 / 136	100 / 136	100 / 136
Emission stage	Stage	IIIA (compliant) / Tier 3 / V	IIIA (compliant) / Tier 3 / V	IIIA (compliant) / Tier 3 / V
		T 41-7	T 33-10	T 46-7
Operating weight with standard fork, without operator	kg	7,460	8,050	8,995
Max. lift capacity	kg	4,100	3,300	4,600
Max. lift height	mm	6,925	9,747	7,032
Overall height ¹	mm	2,465	2,465	2,590
Overall width over standard tyre ¹	mm	2,327	2,327	2,514
Wheelbase ¹	mm	2,850	2,850	2,950
Rear overhang ¹	mm	784	784	977
Track gauge ¹	mm	1,920	1,920	2,040
Outside turning radius over tyres ¹	mm	3,906	3,906	3,833
Ground clearance (mid of vehicle) ¹	mm	405	405	410
Engine output	kW / HP	100 / 136	100 / 136	100 / 136
Emission stage	Stage	IIIA (compliant) / Tier 3 / V	IIIA (compliant) / Tier 3 / V	IIIA (compliant) / Tier 3 / V
		T 55-7	T 60-9	
Operating weight with standard fork, without operator	kg	10,600	11,700	
Max. lift capacity	kg	5,500	6,000	
Max. lift height	mm	7,032	8,780	
Overall height ¹	mm	2,622	2,622	
Overall width over standard tyre ¹	mm	2,521	2,521	
Wheelbase ¹	mm	2,950	3,150	
Rear overhang ¹	mm	1,019	1,217	
Track gauge ¹	mm	2,040	2,010	
Outside turning radius over tyres ¹	mm	3,903	4,090	
Ground clearance (mid of vehicle) ¹	mm	410	438	
Engine output	kW / HP	115 / 156	115 / 156	
Emission stage	Stage	IIIA (compliant) / Tier 3 / V	IIIA (compliant) / Tier 3 / V	

¹ All specifications with standards tyres, standard fork or standard bucket.

Examples of use



The Liebherr Group



Global and independent: more than 70 years of success

Liebherr was founded in 1949 when, with the development of the world's first mobile tower crane, Hans Liebherr laid the foundations for a family business now employing nearly 50,000 people and comprising over 140 companies across every continent.

The parent company is Liebherr-International AG in Bulle, Switzerland, whose associates are exclusively members of the Liebherr family.

Leaders and pioneers

Liebherr is a pioneer and its forward-looking approach has seen it make important contributions to technology history over a wide variety of industries. Employees throughout the world continue to share the courage of the founder, sharing a passion to produce innovative products and a determination to provide world-leading equipment and machinery.

Diversified portfolio

The company is one of the world's biggest construction equipment manufacturers and provides high-quality, user-oriented products and services to sectors including: earthmoving, material handling, deep foundations, mining, mobile and crawler cranes, tower cranes, concrete production and distribution, maritime cranes, aerospace and transportation, gear technology and automation, refrigeration and freezing, components and hotels.

Customised care

Liebherr solutions are characterised by precision, implementation and longevity. The company is committed to technological excellence and to providing customers with solutions that match their needs exactly. That customer focus does not end with delivery of a product but continues through a comprehensive range of back-up and support services.

www.liebherr.com

Liebherr-Hydraulikbagger GmbH
Liebherrstraße 12
D-88457 Kirchdorf/Iller
Tel. +49 7354 80-0
Fax +49 7354 80-7294
info.lhb@liebherr.com

Liebherr-Werk Bischofshofen GmbH
Postfach 49
A-5500 Bischofshofen
Tel. +43 50809 1-0
Fax +43 50809 11385
info.lbh@liebherr.com

Liebherr-France SAS
2 avenue Joseph Rey, B.P. 90287
FR-68005 Colmar Cedex
Tel. +33 3 89 21 30 30
Fax +33 3 89 21 37 93
info.lfr@liebherr.com

Liebherr-Werk Telfs GmbH
Hans Liebherr-Straße 35
A-6410 Telfs
Tel. +43 50809 6-100
Fax +43 50809 6-7772
lwt.marketing@liebherr.com