

EN



---

# LR 1300.2 SX unplugged

---

LR 1106.03.09  
[www.liebherr.com](http://www.liebherr.com)

## LIEBHERR

Crawler cranes

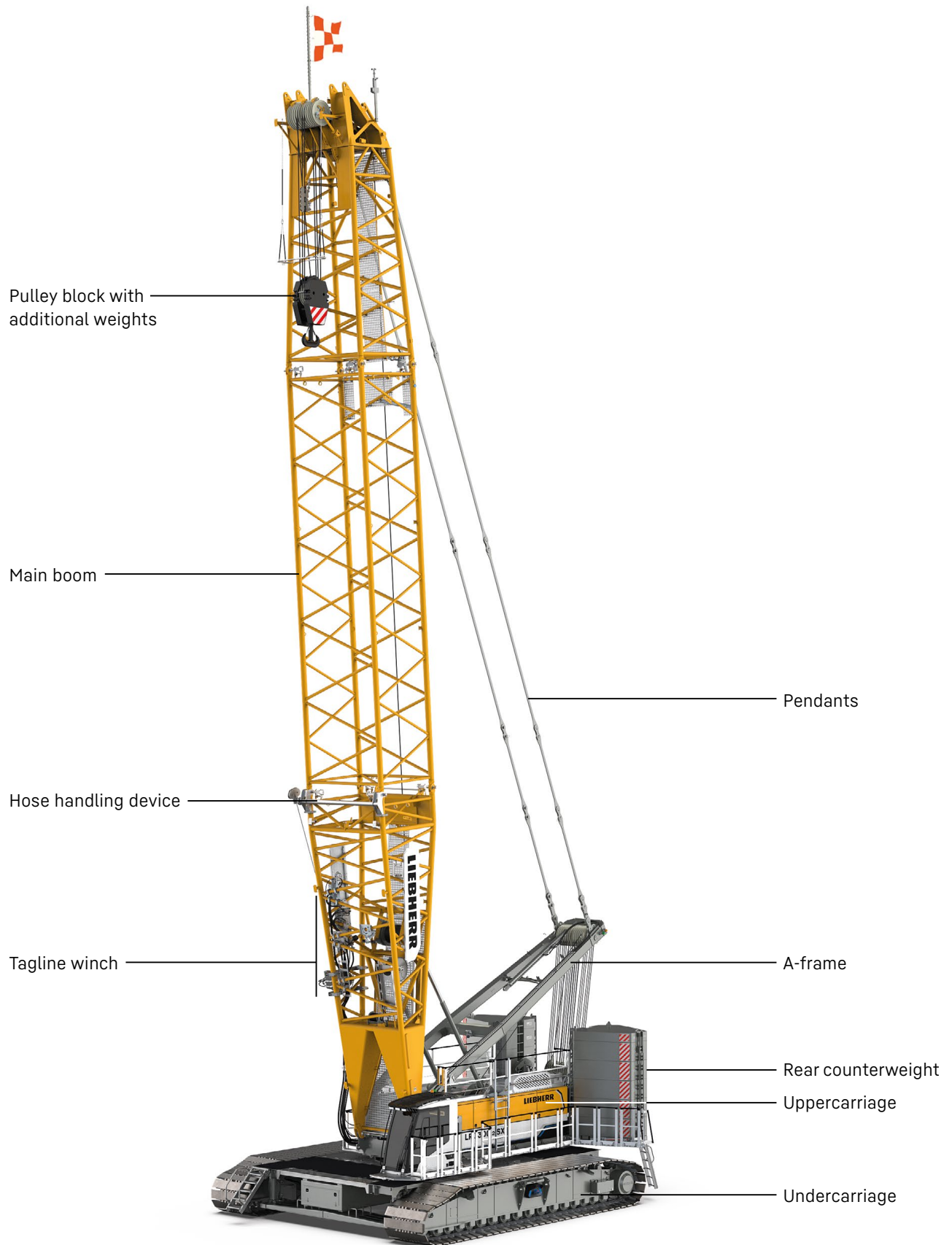


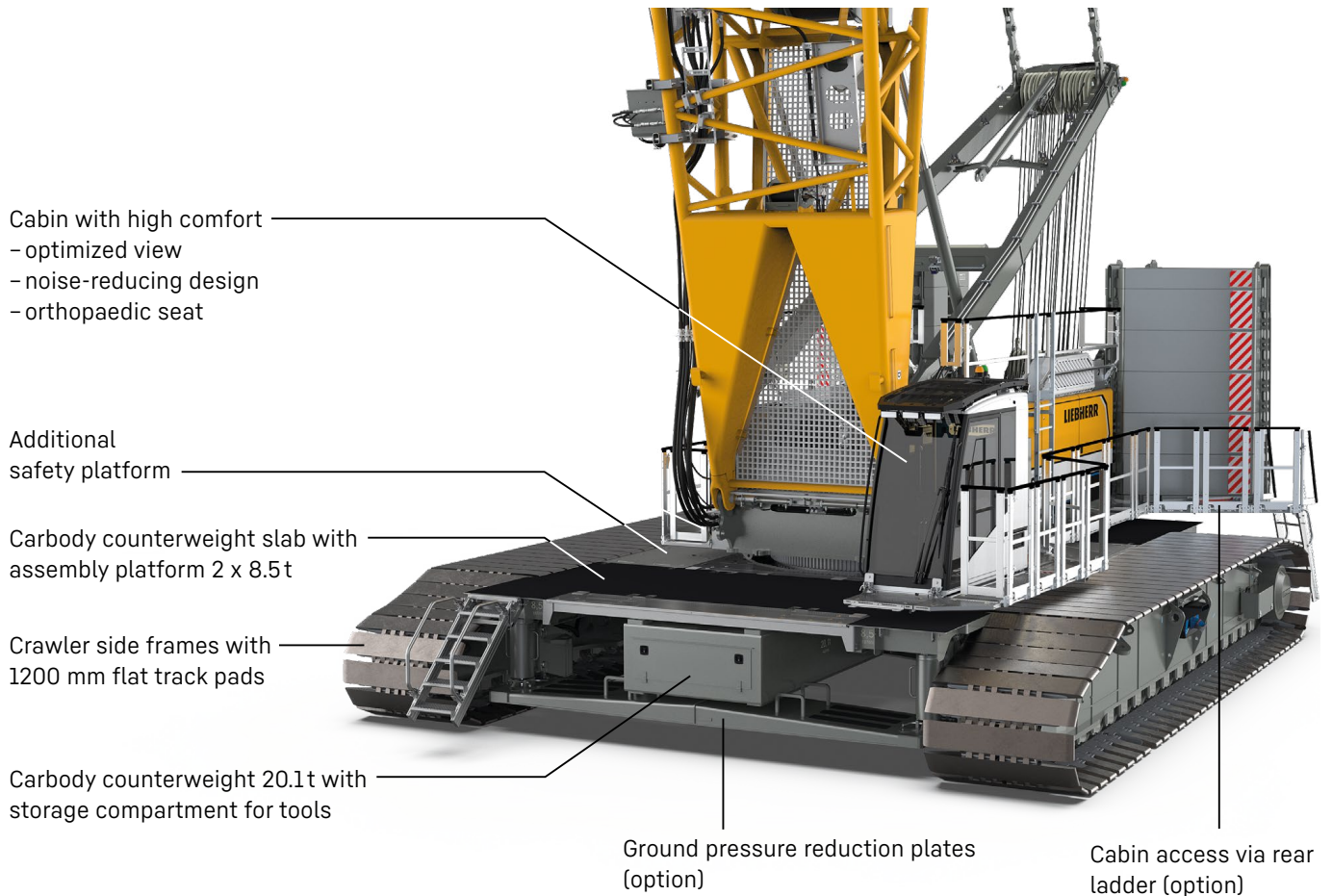
<b>Concept and characteristics</b> .....	3
<b>Technical description</b> .....	8
<b>Dimensions</b> .....	10
<b>Transport dimensions and weights</b> .....	11
<b>Self-assembly system</b> .....	18
<b>Boom combinations</b> .....	20
<b>Main boom 2821.XX (20-92 m)</b> .....	22
<b>Luffing jib 2316.XX (20-113 m)</b> .....	24
<b>Luffing jib 1916.XX (20-95 m)</b> .....	30
<b>Fixed jib 1507.20 (8 m)</b> .....	36
<b>Fixed jib 0906.21 (7 m)</b> .....	38
<b>Fixed jib 1713.XX (14-35 m)</b> .....	40
<b>Fixed jib 1008.XX (11-26 m)</b> .....	44

## Remarks

- The load capacities stated are valid for lifting operation only (corresponding with crane classification according to ISO 4301-1, crane group A1).
- Machine is standing on firm, horizontal ground.
- The weight of the lifting device (pulley block, hoist ropes, shackles, etc.) must be deducted from the load capacity.
- Additional equipment on boom (e.g. walkways) must be deducted from the load capacity.
- The max. admissible wind speed can be preselected in the LML software and referred to in the load chart.
- Working radii are measured from centre of swing ring and under load.
- The lifting capacities are valid for 360 degrees of swing.
- Calculation of stability under load is based on ISO 4305 Table 1+2+3, tipping angle 4°.
- The steel structures are calculated according to EN 13001-1; EN 13001-2.
- The last digits of the given dimensions are rounded to 0 and 5 and may differ from the actual dimensions.
- Weights may vary depending on the delivered configuration of the machine, filling level of the tanks, as well as generally valid tolerances.
- The illustrations in this brochure may include options which are not within the standard scope of supply of the machine.
- Subject to technical change without notice.

# Concept and characteristics





### High performance

A powerful, efficient and reliable electro-hydraulic drive system combined with a high-performance lithium-ion battery ensures high productivity and allows for several movements to be carried out simultaneously.

### Cabin with high comfort

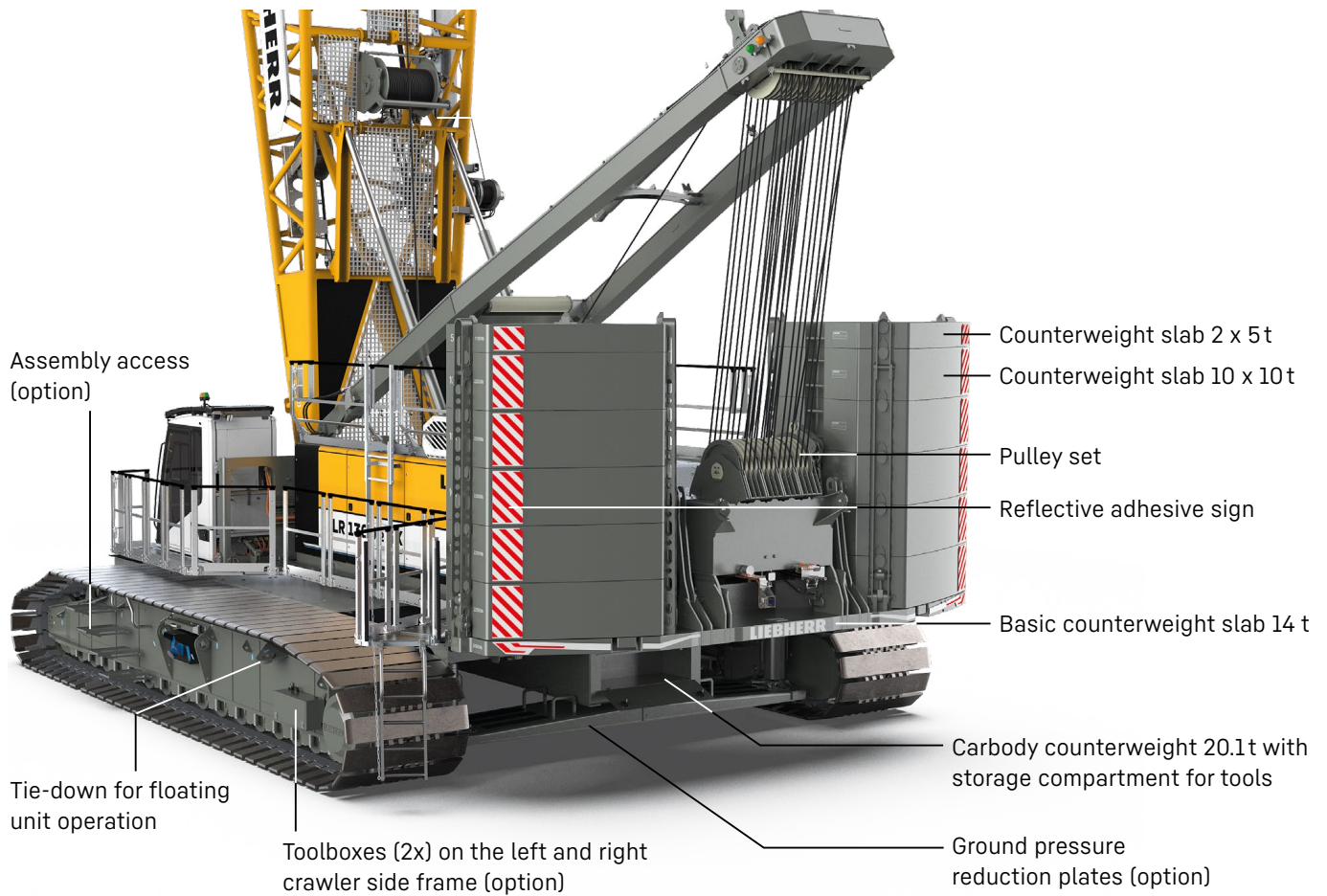
Optimised field of vision combined with enhanced comfort: An orthopaedic operator's seat with heating and cooling functions, as well as precise and ergonomic controls are included.

### Ground pressure

The actual ground pressure is calculated according to the configuration and position of the machine and displayed in the operator's cabin. Using the optional Liebherr Crane-Planner the actual ground pressure can already be calculated and displayed in the planning stage.

### Control

Easy and intuitive handling of control, service and machine functions through a large, clear colour monitor. Built for extreme environmental conditions.



### Efficient self-assembly system and short assembly times

The self-assembly system enables safe, independent and quick assembly/disassembly of the crawler side frames, the carbody and rear counterweights, as well as boom elements.

### Easy service

The design ensures easy maintenance and service as well as safe access to the components.

### Mobility

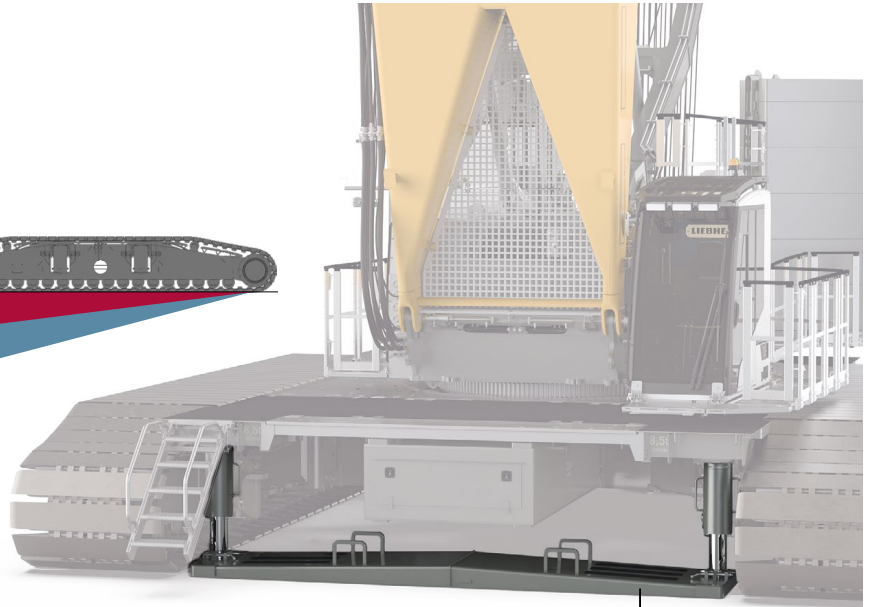
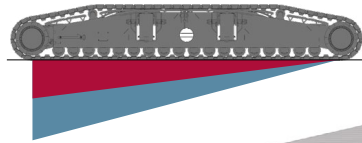
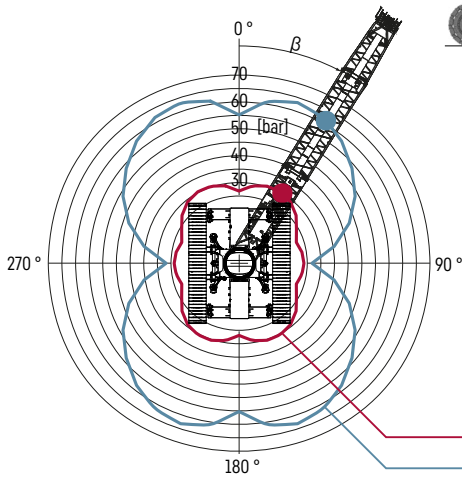
Crane parts are optimized for transportation. The maximum transport width is 3 m.

### Boom/jib

A variety of boom systems and configurations allow for optimum operation on the most diverse jobsites.

### Reduction of ground pressure (option)

With the help of the new hydraulically activated ground pressure reduction plates, the ground pressure can be reduced by up to 56 %.

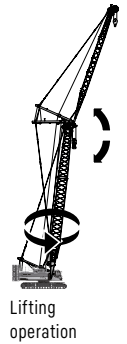


with ground pressure reduction plates  
without ground pressure reduction plates

Ground pressure reduction plates

### Performance “plugged in”

The crane’s performance in “plugged-in” operation is in no way inferior to its diesel-driven performance. The machine can be used without limitations as the battery charges continuously when connected and so delivers sufficient energy at all times.



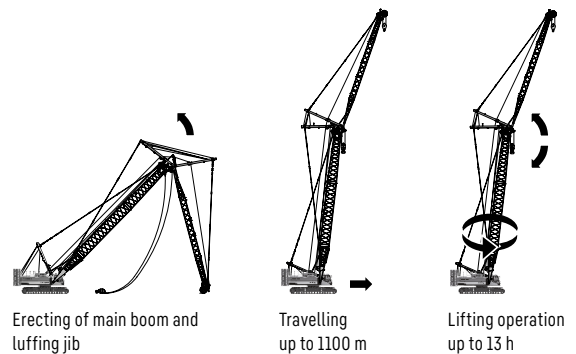
### Performance “unplugged”

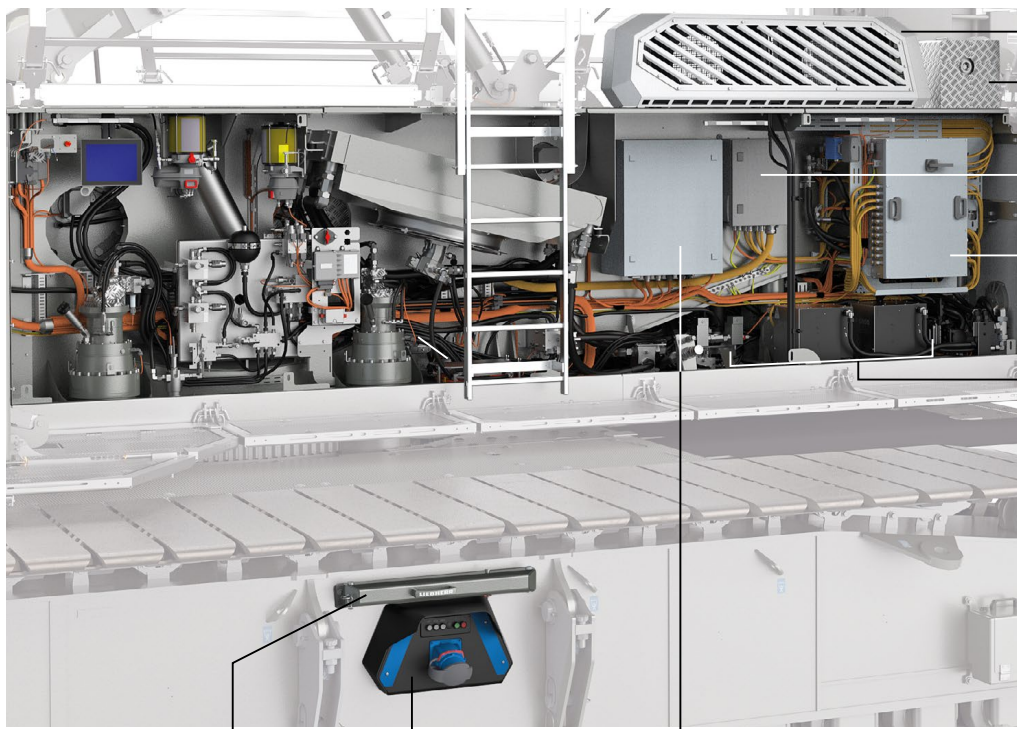
The crane’s performance<sup>(1)</sup> in “unplugged” operation allows for erecting the boom and jib, for travelling a distance of approx. 1100 m<sup>(2)</sup> with full counterweight **or** for up to 13 hours<sup>(3)</sup> of lifting operation.

<sup>1</sup> Battery service life can be optimized by operating the crane in “plugged-in” operation as often as possible.

<sup>2</sup> Fully ballasted on even terrain at 10-25 °C ambient temperature

<sup>3</sup> With an observation period of 10000 shifts, in 50 % of all shifts the crane can operate in “unplugged” mode for up to 13 hours at an ambient temperature of 10-25 °C.



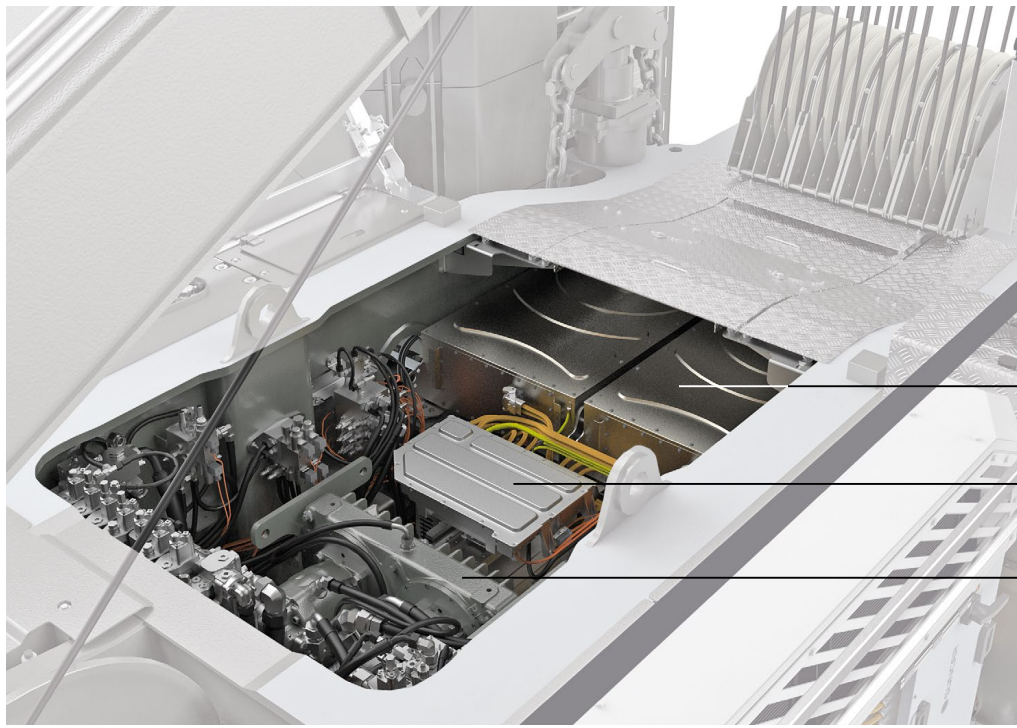


- Heat package (option)
- Expansion tank
- Switch cabinet 400 V AC (Alternating Current)
- Switch cabinet 700 V DC (Direct Current)
- Thermal management system

Fold-out cantilever for electric cable

Control unit with CEE socket

Switch cabinet 24 V LVDU (Low Voltage Distribution Unit)



- Battery system
- Electric motor with inverter
- Distribution gearbox with hydraulic pumps

# Technical description



## Drive system

Max. drive power	438 kW (45°C temperature of cooling water)
Battery type	High Performance Battery System
Technology	Li-Ion NMC (nickel manganese cobalt)
Max. charging power	20 kW @ 32 A 40 kW @ 63 A
Option	80 kW @ 125 A
Mains voltage	400-480 VAC (3 phase + N + PE / 3 phase + PE)



## Noise measurement data and vibration

Noise emission	according to 2000/14/EC directive	
Emission sound pressure level $L_{PA}$	71.0 dB(A)	(in the cabin)
Guaranteed sound power level $L_{WA}$	108 dB(A)	(of the machine)
Vibration transmitted to the machine operator	< 2.5 m/s <sup>2</sup>	(to the hand-arm system)
	< 0.5 m/s <sup>2</sup>	(to the whole body)



## Hydraulic system

Hydraulic pumps	double axial displacement pump in closed loop hydraulic system allows all functions to be operated simultaneously automatic working pressure cut-off to minimize peak pressure
Hydraulic oil tank capacity	810 l
Max. working pressure	350 bar
Hydraulic oil	electronic monitoring of all filters use of synthetic environmentally friendly oil



## Control

Control	includes all control and monitoring functions, designed to withstand extreme environmental conditions and heavy construction tasks
Display	high resolution monitor in the operator's cabin, clear display of complete machine operating data, warnings and failure indications in the required language
Operation	several movements can be performed simultaneously thanks to electro-hydraulic proportional control, all categories of loads can be positioned with utmost precision



## Crawlers

Drive system	with variable displacement axial piston motors
Crawler side frames	manual chain tensioning
Brake	hydraulically released, spring-loaded multi-disc holding brake
Drive speed	0-1.26 km/h
Flat track pads	Width 1200 mm, 1500 mm (option)



## Swing gear

Drive system	with fixed axial piston hydraulic motors, planetary gearbox, pinion
Swing ring	Roller bearing with internal teeth
Brake	hydraulically released, spring-loaded multi-disc holding brake
Swing speed	0-1.7 rpm continuously variable
Speed control	Both swing modes are possible - speed control or free swing for speed control: A multi-disc holding brake locks automatically at zero swing motion



## Hoisting gear

Winches 1/2 as crane winches	Internal low-maintenance planetary gearbox in oil bath, load support by the hydraulic system, spring-loaded, multi-disc holding brake, pressure controlled, variable flow hydraulic motors for the main winches, full utilisation of engine power as the winch speed is automatically adjusted to suit the respective line pull
Line pull in the 7 <sup>th</sup> layer	150 kN
Rope diameter	28 mm
Drum diameter	730 mm
Rope speed	0-113.5 m/min
Rope capacity in 7 layers	570 m
Option - winches 1/2 as free-fall winches	Free fall: clutch and braking functions are provided by the service brake (low wear and maintenance-free multi-disc brake in compact design)



## Boom/jib luffing winches




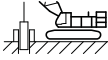


<b>Main boom</b>	
Line pull	180 kN
Rope diameter	24 mm
Boom luffing	15-86° in 127 s
<b>Jib</b>	
Line pull	max. 138 kN
Rope diameter	20 mm
Jib luffing	15-78° in 69 s (2316.xx)

## Operating weight

Composition of operating weight	Basic machine with crawler side frames (1200mm) Cabin Winches 1+2 (incl. ropes 665 m + 540 m) A-frame 1 20m main boom, consisting of boom foot (10 m), boom head (7 m) and boom section (3 m) 124 t rear counterweight 57.2 t carbody counterweight 300 t pulley block
Total weight	approx. 293 t



## Operation modes

	 Lifting mode	 Grab mode	 Personnel lifting mode	 Foundation work
 Land	✓	✓	✓	✓
 Floating structure (Barge operation)	✓	✓	✓ *	✓

\* only valid for jack-up barges

## Optional equipment

### Basic machine

Additional hydraulics for free fall operation  
Preparation for ground pressure reduction plates  
Ground pressure reduction plates  
Load hook/hook block with PL latch  
Painting in customer design  
Rotation-free hoist rope, 28 mm, 2160 N/mm<sup>2</sup>, 190, 240, 400, 480, 540, 665 m  
Track pads 1500 mm wide  
Winches 1/2 as free-fall winches

### Boom/jib

Luffing jib: Luffing winch

### Boom/jib other

Additional fall protection harness for 1 person  
Rope guide (2821.xx) ≥ 20 m  
Walkways for main boom sections 3/6 /12 m  
Walkways for main boom sections 3/6 /12 m, incl. fall protection  
Carbon pendants

### Application packages

Assembly radio remote control  
Cabin elevator 6 m hydraulic  
Leader application  
Main winch constant tension for one winch  
Operation mode: Foundation work  
Operation mode: Personnel lifting mode  
Radio remote control  
Radio remote control (preparation)  
Rope reeving function via radio remote control  
Tagline winch 2 t free fall  
Two-hook operation  
Use of luffing jib winch as auxiliary winch  
Vibration damper for vibrator 120/160/250/500/800 kN  
Winch synchronisation  
Pile-tilting device (W900 / W4000)

### Special features

Crane Planner 2.0  
LiDAT

### Self-assembly system

Jack-up system telescopic  
Reeving winch  
Self-assembly cylinder  
Self-assembly system rear counterweight

### Service package

Central lubrication swing ring bearings / outside  
Cold package -25°C  
Gear oil level warning  
Hydraulic oil bypass filter  
Liebherr hydraulic oil plus arctic (longlife & bio)  
Liebherr hydraulic oil plus arctic (longlife)

### Safety features

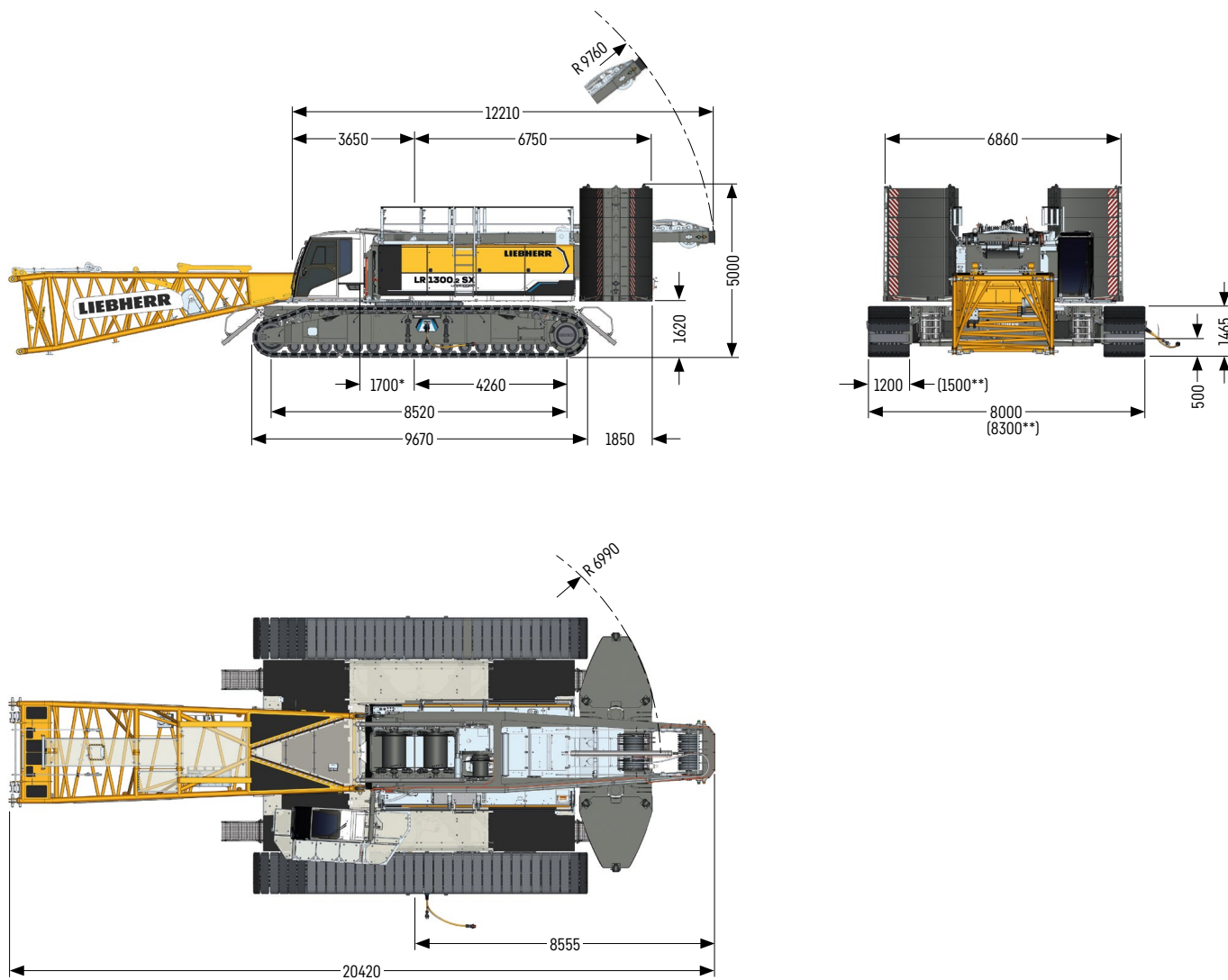
Access control  
Additional access ladder for boom assembly  
Aircraft warning light  
Assistance system: Boom Up-and-Down Assistant  
Assistance system: Gradient Travel Aid  
Assistance system: Ground pressure indication and visualisation  
Assistance system: Horizontal Load Path  
Assistance system: Vertical Line Finder  
Cabin protection roof, FOPS 2, foldable  
Lifting height indication for both hoist winches  
Lightning rod / Lightning rod with flag holder  
Earth spike  
Mechanical angle display  
Plug&Play diesel-hydraulic back-up unit 18.4 kW  
Rear and side view cameras  
Swing and boom radius limit device  
Swing warning light  
Vandalism cabin protection  
Winch camera  
Zoom camera at boom head

### Operator's comfort

Additional access ladder  
Additional ignition key  
Additional floodlights on the main boom (2 x 300 W)  
Adjustable, additional LED lights, boom foot  
Cabin air conditioner  
Cabin tilting device hydraulic  
Footrest  
Tool storage boxes (2x), mounted on the crawler side frames  
Surcharge for brighter LED floodlights

# Dimensions

## Basic machine with undercarriage

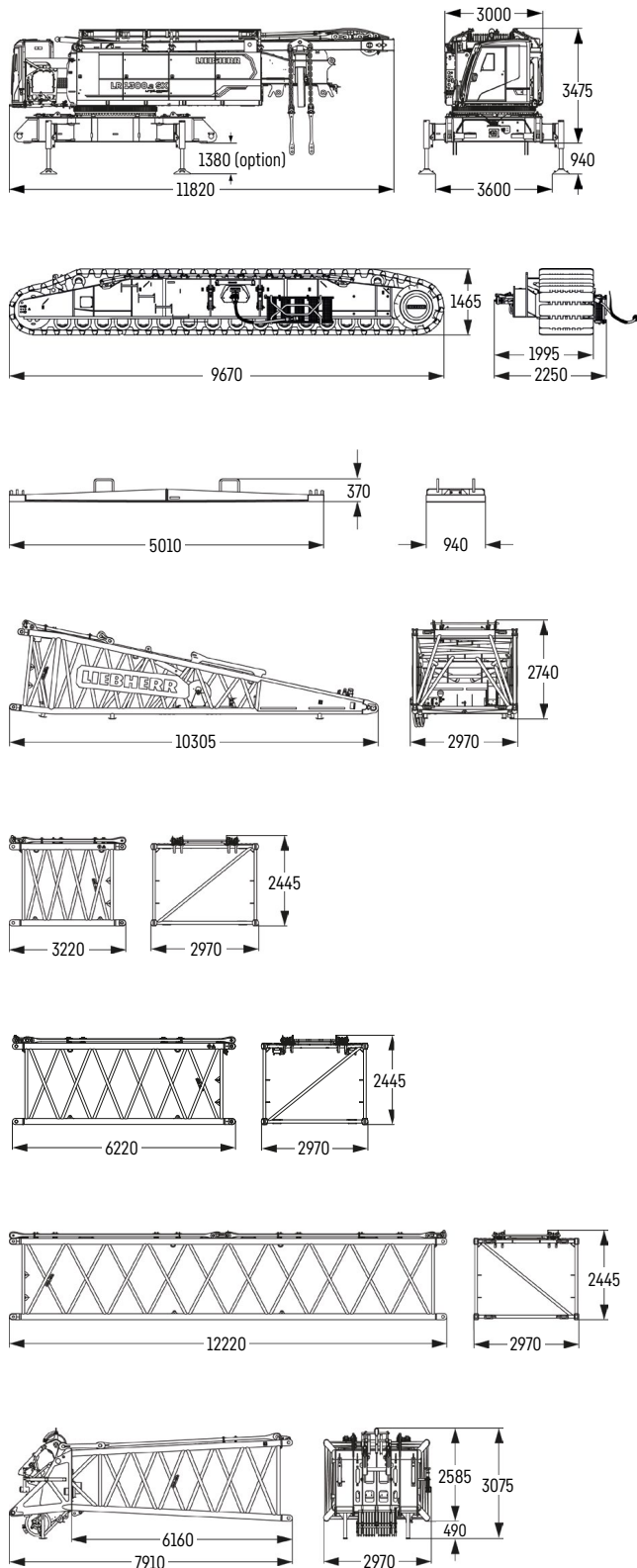


\* Boom pivot point

\*\* Option: track pads, width 1500 mm

# Transport dimensions and weights

## Basic machine und main boom 2821.xx



### Basic machine

Weight without hoist rope	kg	48680
Weight of hoist ropes	kg/m	4.2
with A-frame 1, winches 1+2, without boom foot, without rear counterweight, without carbody counterweight and crawler side frames		

### Crawler side frame

Weight flat track pads 1200 mm	kg	24375
Weight flat track pads 1500 mm (option)	kg	28098

### Ground pressure reduction plates

Weight	kg	1380
--------	----	------

### Boom foot 10 m (No. 2821.30)

Weight including winch	kg	6928
Weight without winch	kg	5886

### Boom section 3 m (No. 2821.30)

Weight including boom pendants	kg	1411
Weight including boom and jib pendants	kg	1513

### Boom section 6 m (No. 2821.30)

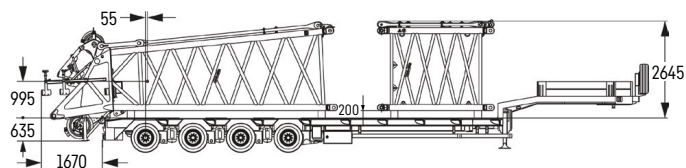
Weight including boom pendants	kg	2163
Weight including boom and jib pendants	kg	2333

### Boom section 12 m (No. 2821.30)

Weight including boom pendants	kg	3736
Weight including boom and jib pendants	kg	4076

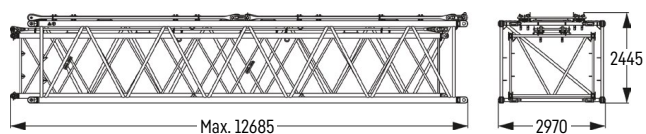
### Boom head 7 m (No. 2821.24)

Weight including boom pendants	kg	4786
--------------------------------	----	------



**Transport option –  
boom head 7 m (No. 2821.24) + boom section 3 m (No. 2821.30)**

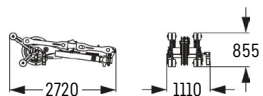
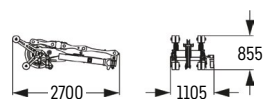
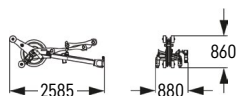
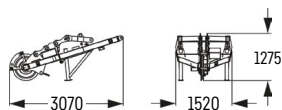
<b>Boom head 7 m</b>	
Weight including boom pendants	kg 4786
<b>Boom section 3 m</b>	
Weight including boom pendants	kg 1411
Weight including boom and jib pendants	kg 1513



**Transport option –  
boom section (No. 2821.xx) + boom section (No. 2316.xx)**

No. 2825.xx / 2316.xx	m 3 / 3	6 / 6	12 / 12
Weight including pendants	kg 2124	3294	5876

## Auxiliary jib



**Auxiliary jib 36 t (available for No. 2821.xx)**

Weight	kg 753
--------	--------

**Auxiliary jib 15 t (single fall) (available for No. 1008.xx / 1713.xx / 1916)**

Weight	kg 367
--------	--------

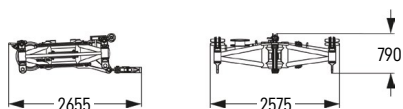
**Auxiliary jib 30 t (two fall) (available for No. 2316.20 and No. 2316.45)**

Weight	kg 652
--------	--------

**Auxiliary jib 45 t (available for No. 2316.45)**

Weight	kg 871
--------	--------

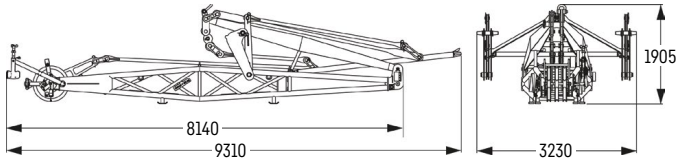
## Mid fall



**Mid fall (available for No. 1916.xx / No. 2316.xx)**

Weight (No. 1916.xx)	kg 680
Weight (No. 2316.xx)	kg 697

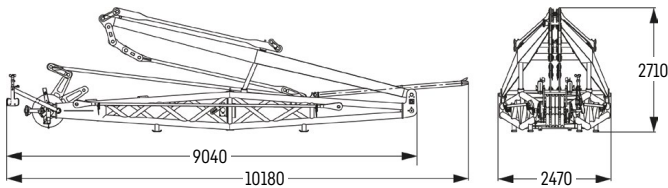
## Fixed jib 0906.21



### Fixed jib 7 m (No. 0906.21)

Weight including pendants	kg 2470
---------------------------	---------

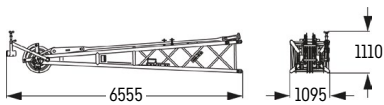
## Fixed jib 1507.20



### Fixed jib 8 m (No. 1507.20)

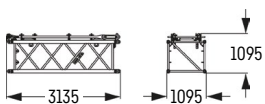
Weight including pendants	kg 3382
---------------------------	---------

## Fixed jib 1008.xx



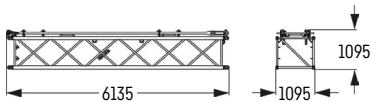
### Jib head 5.5 m (No. 1008.20)

Weight including pendants	kg 875
---------------------------	--------



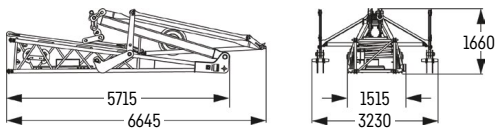
### Jib section 3 m (No. 1008.17)

Weight including pendants	kg 266
---------------------------	--------



### Jib section 6 m (No. 1008.17)

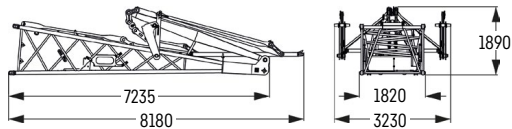
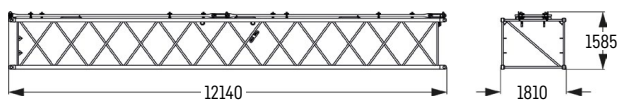
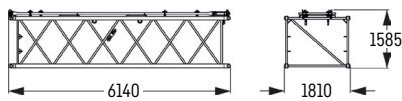
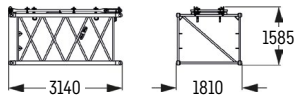
Weight including pendants	kg 443
---------------------------	--------



### Jib foot 5.5 m with A-frame (No. 1008.20)

Weight including pendants	kg 2156
---------------------------	---------

## Fixed jib 1713.xx



### Jib head 7 m (No. 1713.21)

Weight including pendants	kg 1375
---------------------------	---------

### Jib section 3 m (No. 1713.18)

Weight including pendants	kg 420
---------------------------	--------

### Jib section 6 m (No. 1713.18)

Weight including pendants	kg 630
---------------------------	--------

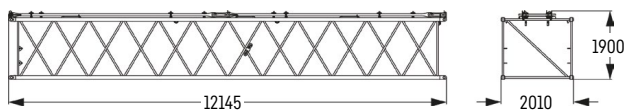
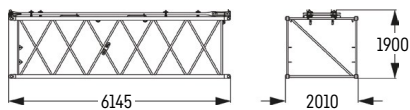
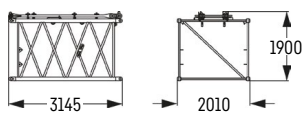
### Jib section 12 m (No. 1713.18)

Weight including pendants	kg 1140
---------------------------	---------

### Jib foot 7 m with A-frame (No. 1713.22)

Weight including pendants	kg 2678
---------------------------	---------

## Luffing jib 1916.xx



### Jib head 7 m (No. 1916.21)

Weight including pendants	kg 1550
---------------------------	---------

### Jib section 3 m (No. 1916.18)

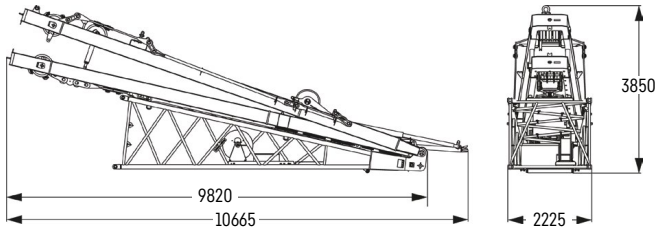
Weight including pendants	kg 448
---------------------------	--------

### Jib section 6 m (No. 1916.18)

Weight including pendants	kg 680
---------------------------	--------

### Jib section 12 m (No. 1916.18)

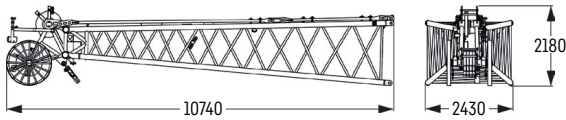
Weight including pendants	kg 1230
---------------------------	---------



**Jib foot 7 m with A-frames 2 + 3 (No. 1916.22)**

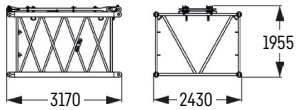
Weight including pendants	kg 6306
---------------------------	---------

**Luffing jib 2316.xx**



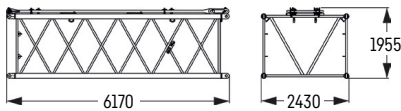
**Jib head 10 m (No. 2316.20)**

Weight including pendants	kg 2454
---------------------------	---------



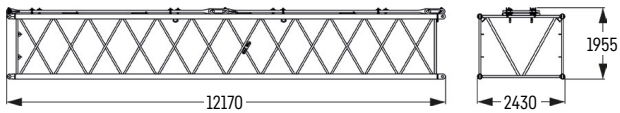
**Jib section 3 m (No. 2316.20)**

Weight including pendants	kg 611
---------------------------	--------



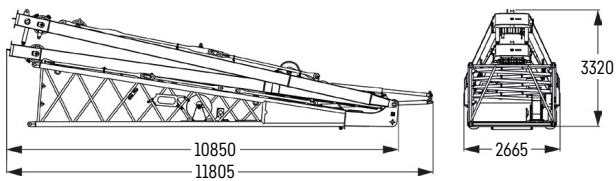
**Jib section 6 m (No. 2316.20)**

Weight including pendants	kg 961
---------------------------	--------



**Jib section 12 m (No. 2316.20)**

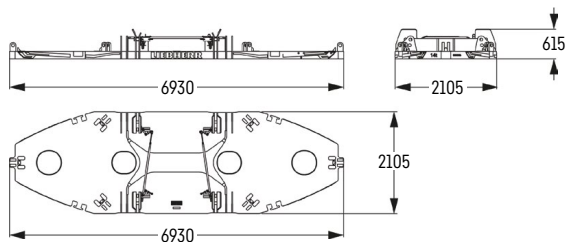
Weight including pendants	kg 1800
---------------------------	---------



**Jib foot 10 m with A-frames 2 + 3 (No. 2316.22)**

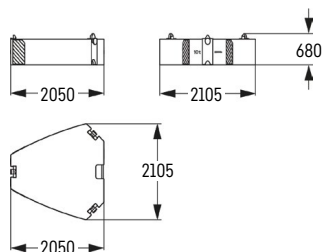
Weight including pendants	kg 8208
---------------------------	---------

# Counterweight



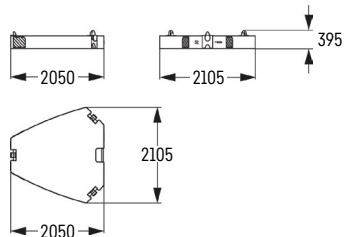
## Basic counterweight slab without tie-down (1x)

Weight	kg 14339
--------	----------



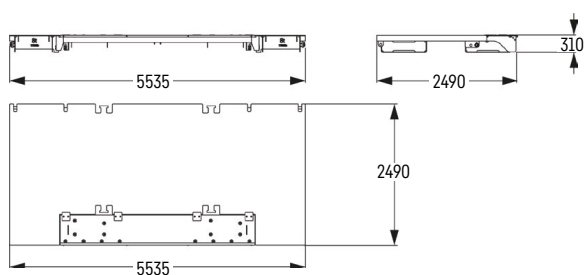
## Counterweight slab (10x)

Weight	kg 10000
--------	----------



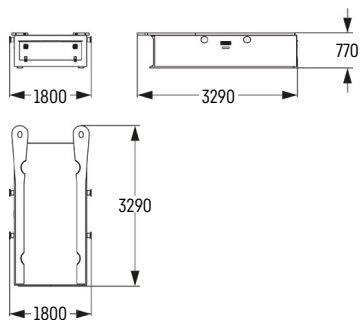
## Counterweight slab (2x)

Weight	kg 5000
--------	---------



## Carbody counterweight slab (2x)

Weight	kg 8596
Weight flat track pads 1500 mm (option)	kg 8091

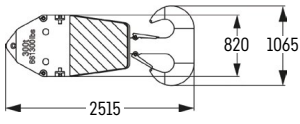


## Carbody counterweight slab (2x)

Weight	kg 20100
--------	----------

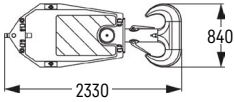


# Pulley block with additional weights / load hooks



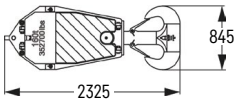
## 300 t pulley block - 11 pulleys

Width	mm	1220
Weight	kg	3200 / 5500



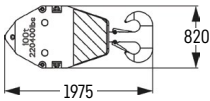
## 220 t pulley block - 7 pulleys

Width	mm	1465
Weight	kg	2000 / 3900 / 5800



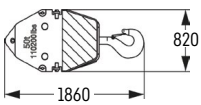
## 160 t pulley block - 5 pulleys

Width	mm	925
Weight	kg	1600 / 2800 / 4000



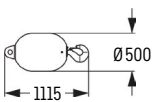
## 100 t pulley block - 3 pulleys

Width	mm	625
Weight	kg	1100 / 2050 / 3000



## 50 t pulley block - 1 pulley

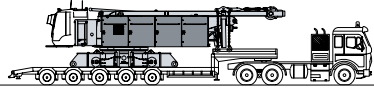
Width	mm	540
Weight	kg	800 / 1600 / 2400



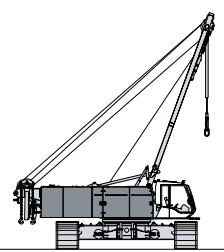
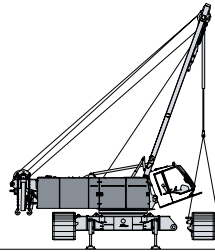
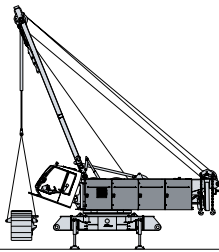
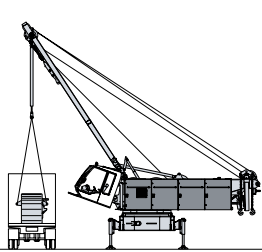
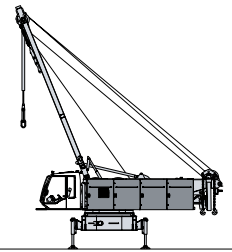
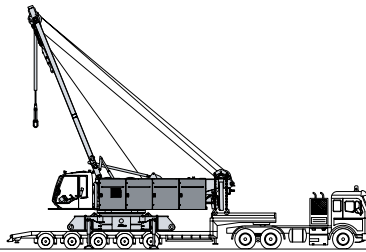
## 16 t load hook

Weight	kg	900
--------	----	-----

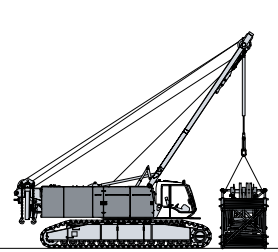
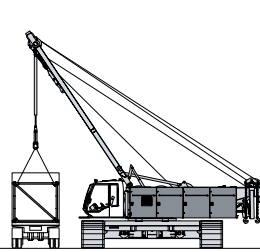
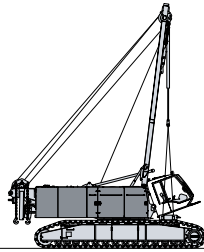
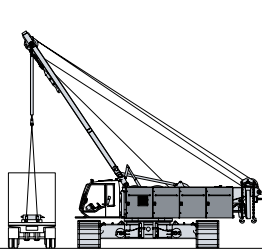
# Self-assembly system



Unloading of basic machine

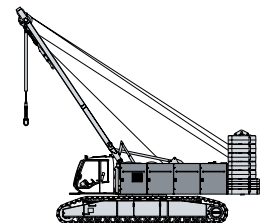
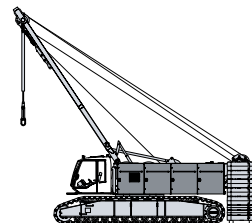
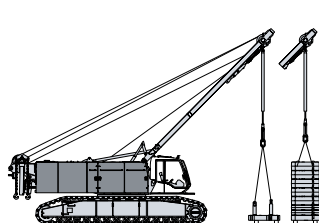
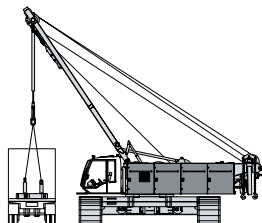


Unloading and assembly of crawler side frames

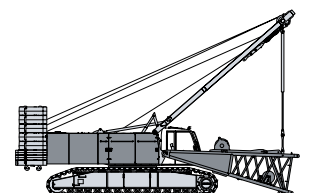
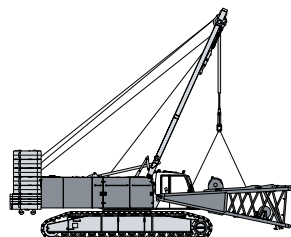
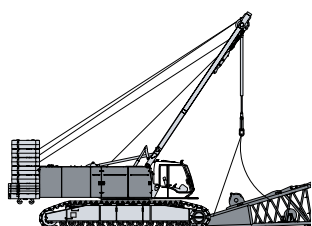


Unloading and assembly of carbody counterweight

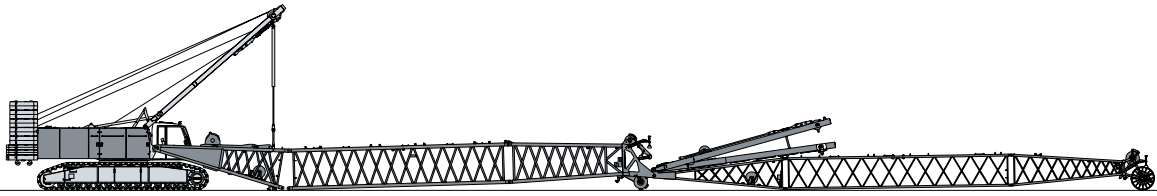
Unloading and assembly of boom



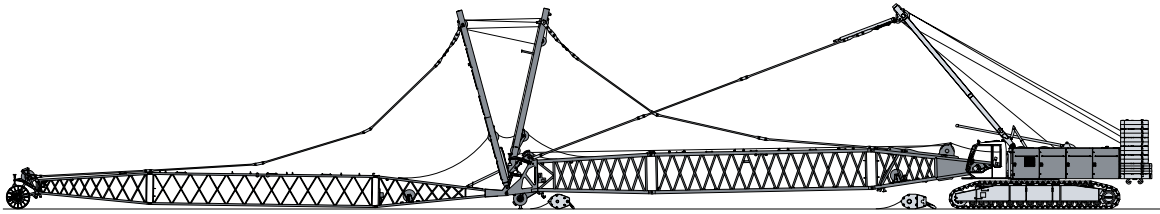
Unloading and assembly of rear counterweight



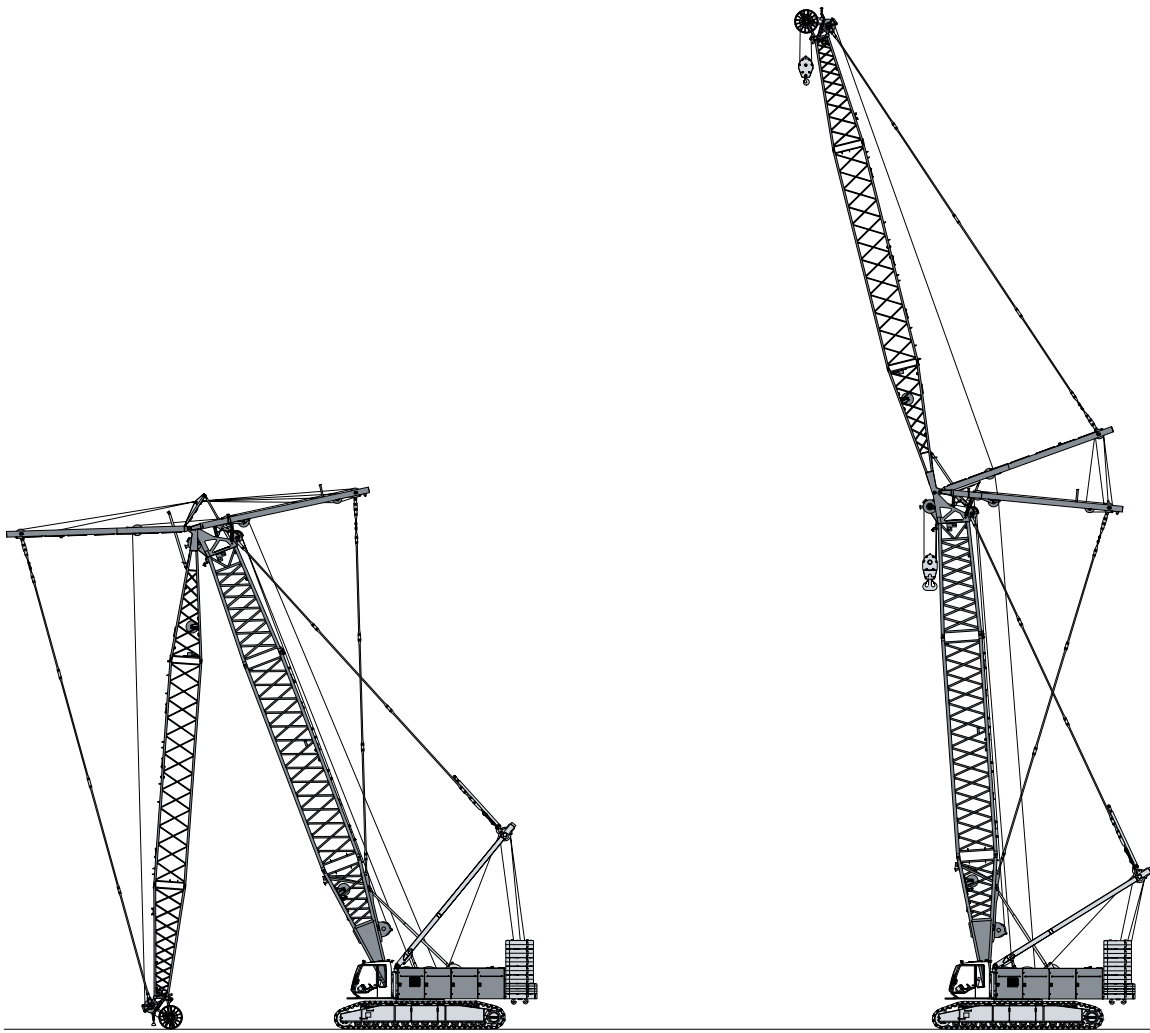
Unloading and assembly of boom foot



Assembly of boom

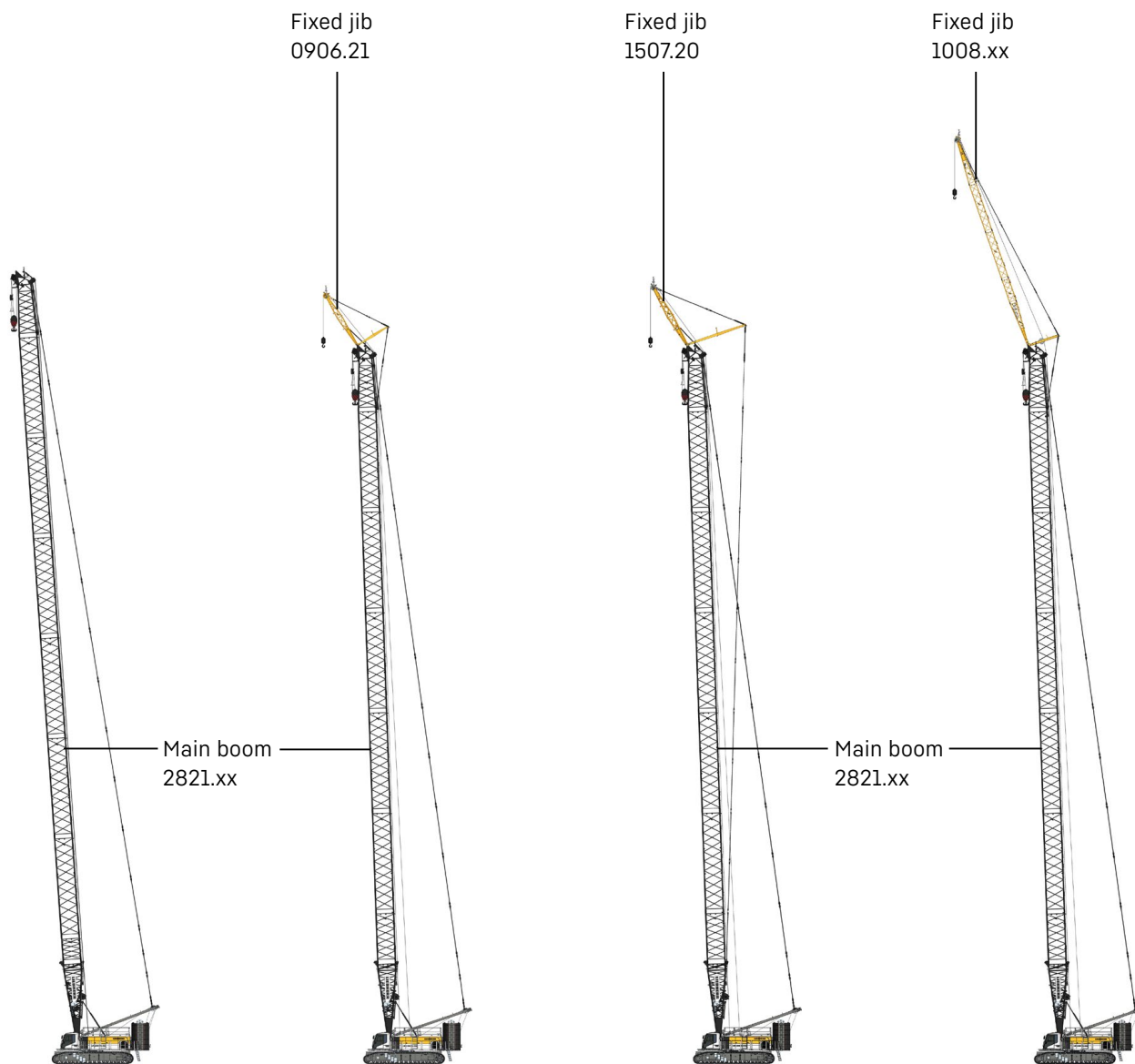


Reeving of hoist and luffing jib ropes



Erecting of main boom and luffing jib

# Boom combinations



## Main boom

Mode 1

### Max. length

2821.xx m 92

Further information on page 22.

## Main boom + fixed jib

Mode 3

### Max. combination

2821.xx m 83

0906.21 m 7

Total length m 90

Further information on page 38.

## Main boom + fixed jib

Mode 3

### Max. combination

2821.xx m 83

1507.20 m 8

Total length m 91

Further information on page 36.

## Main boom + fixed jib

Mode 3

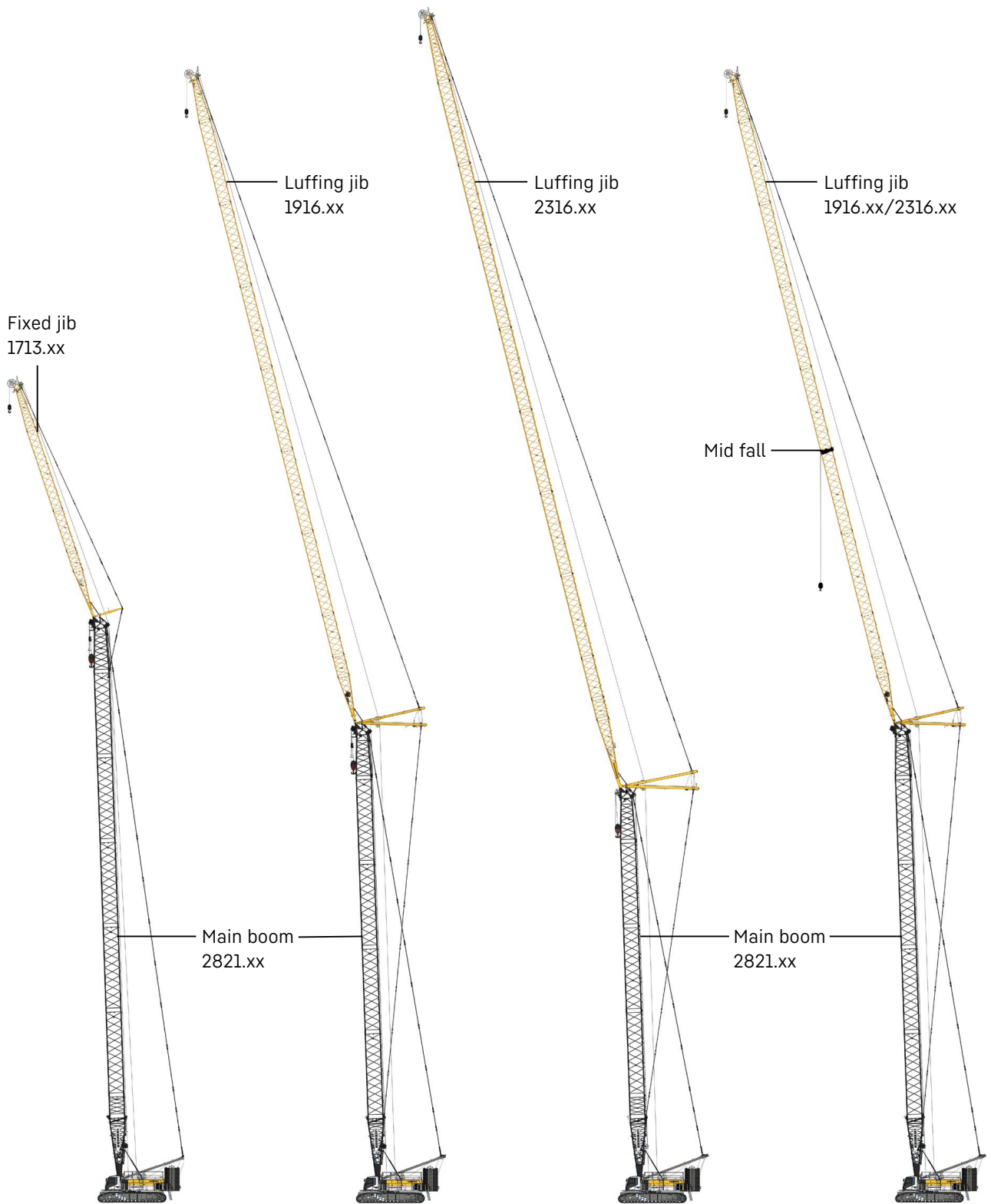
### Max. combination

2821.xx m 80

1008.xx m 26

Total length m 106

Further information on page 44.



**Main boom + fixed jib**

Mode 3	
<b>Max. combination</b>	
2821.xx	m 74
1713.xx	m 35
<b>Total length</b>	<b>m 109</b>

Further information on page 40.

**Main boom + luffing jib**

Mode 4		
<b>Max. combination</b>		
2821.xx	m 65	71
1916.xx	m 95	44
<b>Total length</b>	<b>m 160</b>	<b>115</b>

Further information on page 30.

**Main boom + luffing jib**

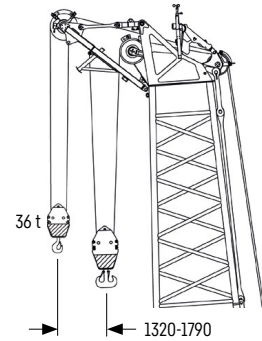
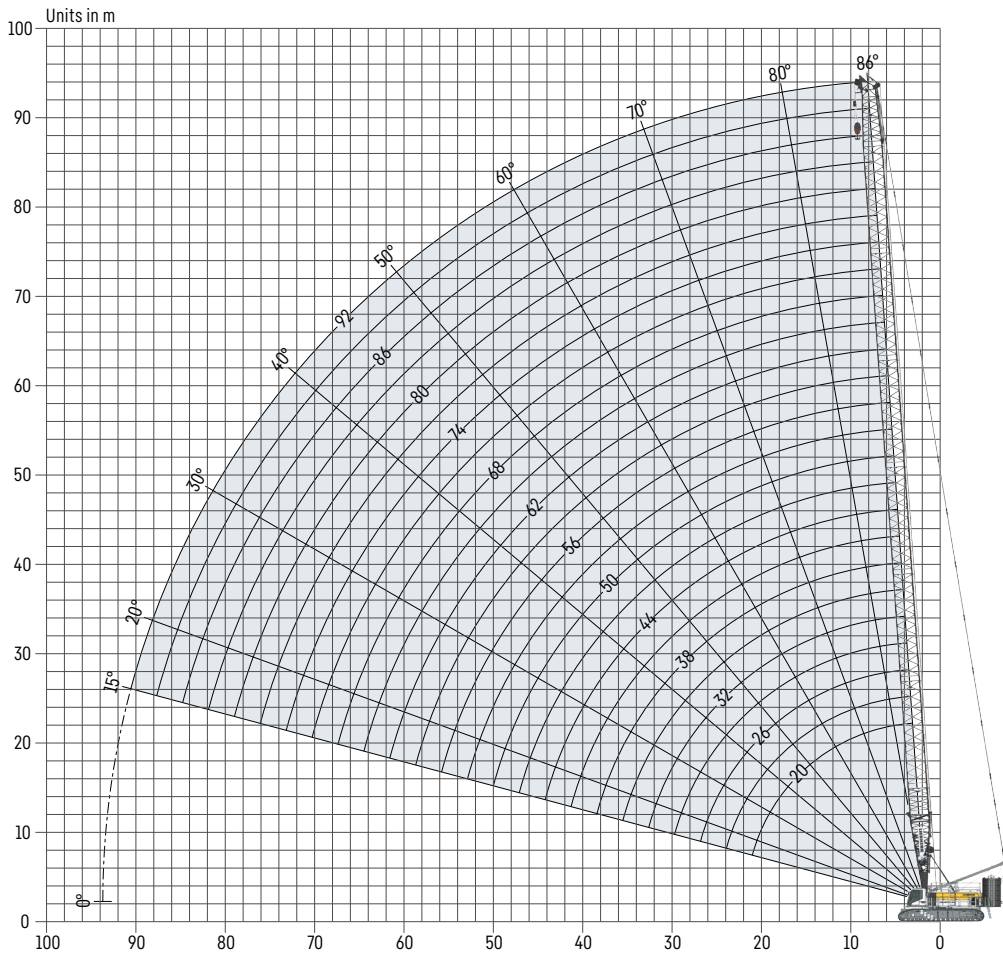
Mode 4		
<b>Max. combination</b>		
2821.xx	m 56	68
2316.xx	m 113	38
<b>Total length</b>	<b>m 169</b>	<b>106</b>

Further information on page 24.

**Main boom+ luffing jib + mid fall**

Mode 5		
<b>Combinations</b>		
2821.xx + mid fall		
2316.xx + mid fall		
See Crane Planner 2.0		

# Main boom 2821.xx (20-92 m)



## Auxiliary jib 36 t (option)

The maximum capacity of the auxiliary jib for the main boom is 36 t. The corresponding load chart is programmed in the LML system.

## Main boom configuration 2821.xx

Boom section	Amount of boom sections													
Boom foot 10m	1	1	1	1	1	1	1	1	1	1	1	1	1	1
Boom section 3m	1		1	1	1	1	1	1	1	1	1	1	1	1
Boom section 6m		1	1			1	1			1	1			1
Boom section 12m				1	1	1	1	2	2	2	2	3	3	
Boom head 7m	1	1	1	1	1	1	1	1	1	1	1	1	1	1
<b>Boom length [m]</b>	<b>20</b>	<b>23</b>	<b>26</b>	<b>29</b>	<b>32</b>	<b>35</b>	<b>38</b>	<b>41</b>	<b>44</b>	<b>47</b>	<b>50</b>	<b>53</b>	<b>56</b>	
Auxiliary jib	✓	✓	✓	✓	✓	✓	✓	✓	✓	✓	✓	✓	✓	✓
Boom foot 10m	1	1	1	1	1	1	1	1	1	1	1	1	1	
Boom section 3m		1		1		1		1		1		1		
Boom section 6m	1	1			1	1				1	1			
Boom section 12m	3	3	4	4	4	4	5	5	5	5	6	6		
Boom head 7m	1	1	1	1	1	1	1	1	1	1	1	1	1	
<b>Boom length [m]</b>	<b>59</b>	<b>62</b>	<b>65</b>	<b>68</b>	<b>71</b>	<b>74</b>	<b>77</b>	<b>80</b>	<b>83</b>	<b>86</b>	<b>89</b>	<b>92</b>		
Auxiliary jib	✓	✓	✓	✓	✓	✓	✓	✓	✓	✓	✓	✓	✓	✓

# Load capacities with main boom

Load capacity in [t]

	Boom length [m]											
	20	26	32	38	44	50	56	62	68	74	83	92
4.3	300.5											
5	300.5	299.8										
6	262.9	256.3	245.5	236.5	213.4							
7	229.5	222.2	215.8	206.9	198.3	189.3	169.3					
8	202.6	198.2	191.1	184.6	178.4	168.6	161.4	151.1	135.3			
9	182.4	176.9	173.2	166.0	160.2	154.1	146.1	138.5	131.7	118.7	95.6	
10	164.4	161.2	156.5	152.3	145.7	139.9	134.5	127.6	120.2	111.8	95.6	78.3
11	150.6	147.2	143.0	138.8	135.0	128.4	123.0	117.9	112.0	103.7	91.1	77.9
12	138.4	134.7	132.8	127.3	124.0	119.6	113.5	108.4	103.5	97.8	87.5	75.4
13	127.2	124.4	122.2	118.0	114.4	110.9	106.0	100.5	95.7	90.5	84.9	73.3
14	117.8	116.3	112.8	110.3	106.2	102.8	99.0	94.1	89.1	84.1	79.4	71.8
15	110.2	107.9	104.8	102.5	99.5	95.7	92.3	88.5	83.6	78.6	74.1	68.2
16	102.8	100.5	98.3	95.6	93.5	89.6	86.2	82.8	78.9	73.9	69.6	64.0
18	89.1	88.4	87.0	84.2	82.3	80.0	76.4	73.0	69.6	66.1	62.4	56.8
20	77.1	77.2	77.1	75.6	73.2	71.4	68.8	65.4	61.9	59.1	56.3	51.4
22		67.8	67.8	67.3	66.4	64.2	62.0	59.5	55.8	53.2	50.6	46.6
24		60.3	60.3	59.8	59.3	58.7	56.3	54.0	51.0	48.6	45.8	42.2
25		57.0	57.0	56.5	56.1	55.5	53.8	51.6	48.7	46.7	43.7	40.2
26		54.0	54.1	53.6	53.2	52.5	51.6	49.4	46.6	44.8	41.8	38.4
28			48.9	48.4	48.0	47.4	46.8	45.4	42.8	41.3	38.6	35.2
30			44.4	44.0	43.6	43.0	42.4	41.8	39.5	38.2	35.6	32.6
32			40.6	40.2	39.8	39.2	38.6	38.0	36.9	35.5	32.8	30.1
34				36.9	36.5	35.9	35.3	34.6	34.0	33.2	30.3	27.8
35				35.4	35.0	34.4	33.8	33.2	32.6	31.8	29.2	26.8
36				34.0	33.6	33.0	32.4	31.8	31.2	30.4	28.2	25.8
38				31.4	31.1	30.4	29.9	29.2	28.6	27.9	26.3	23.9
40					28.8	28.2	27.6	26.9	26.3	25.6	24.6	22.3
42					26.7	26.1	25.6	24.9	24.2	23.5	22.5	20.9
44					24.8	24.2	23.7	23.0	22.4	21.7	20.7	19.5
45						23.4	22.9	22.2	21.6	20.8	19.8	18.7
46						22.5	22.0	21.3	20.7	20.0	19.0	17.9
48						21.0	20.5	19.8	19.2	18.5	17.5	16.4
50						19.5	19.1	18.4	17.8	17.1	16.1	15.0
55							16.0	15.4	14.9	14.1	13.0	12.0
60								12.9	12.3	11.6	10.5	9.4
65									10.2	9.5	8.4	7.4
70										7.7	6.6	5.6
75											5.2	4.1
80											3.8	2.7

Carbody counterweight: 57.2 t with 1200 mm flat track pads

Rear counterweight:

114.0 t

124.0 t

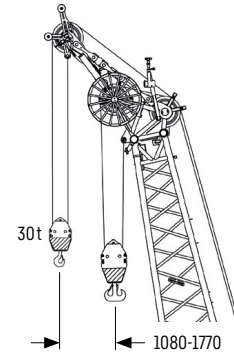
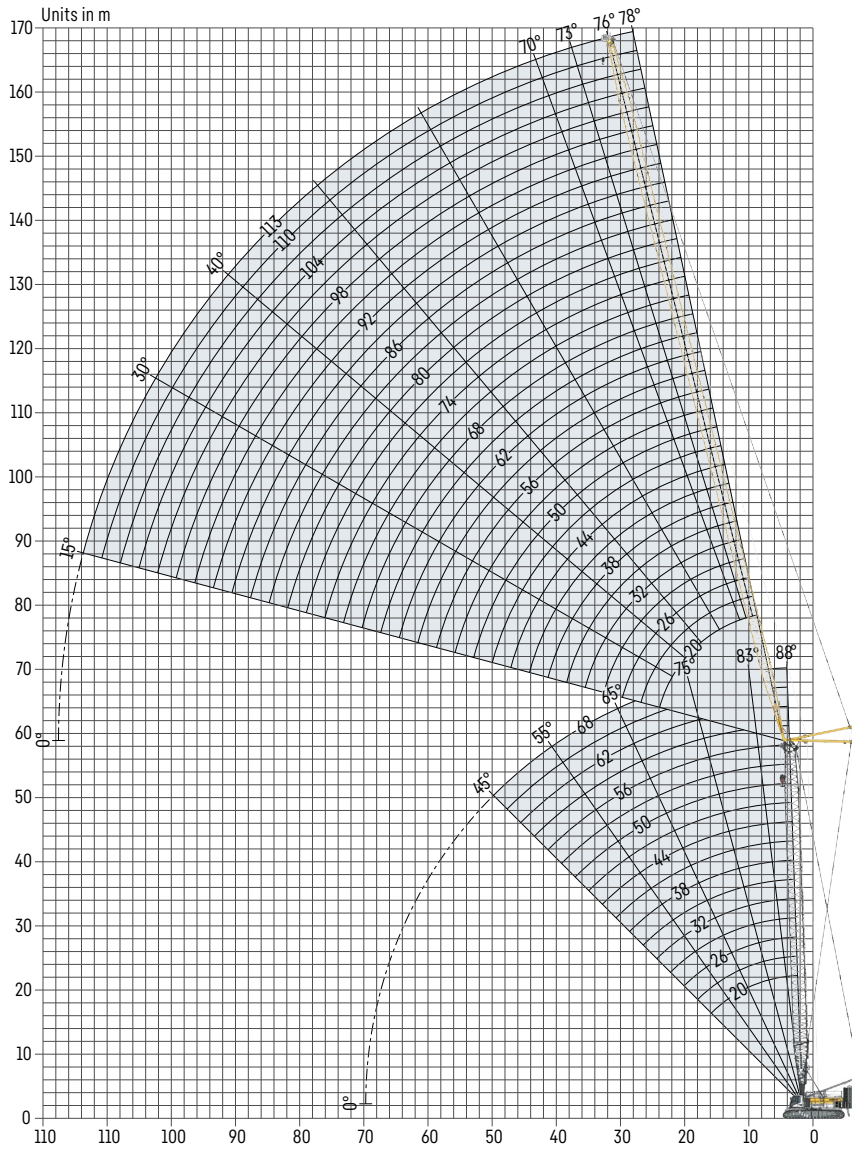
TLT 14168025/0. Above load charts are for reference only. For actual lift duty please refer to load chart in operator's cabin or manual. Otherwise we recommend you to plan your lifting job using Crane Planner 2.0.



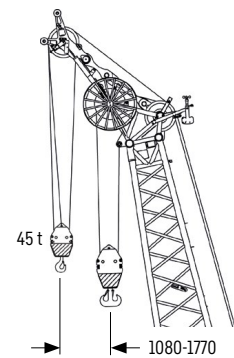
**Crane Planner 2.0**



# Luffing jib 2316.XX (20-113 m)



**Auxiliary jib 30t (option)**  
The maximum capacity of the auxiliary jib for the luffing jib is 30t.



**Auxiliary jib 45t (option)**  
The maximum capacity of the auxiliary jib for the luffing jib is 45t.

## Jib configuration 2316.xx

Jib section	Amount of boom sections															
	20	23	26	29	32	35	38	41	44	47	50	53	56	59	62	65
Jip foot 10 m	1	1	1	1	1	1	1	1	1	1	1	1	1	1	1	1
Jip section 3 m		1		1		1		1		1		1		1		1
Jip section 6 m			1	1			1	1			1	1			1	1
Jip section 12 m					1	1	1	1	2	2	2	2	3	3	3	3
Jip head 10 m	1	1	1	1	1	1	1	1	1	1	1	1	1	1	1	1
<b>Jip length [m]</b>	<b>20</b>	<b>23</b>	<b>26</b>	<b>29</b>	<b>32</b>	<b>35</b>	<b>38</b>	<b>41</b>	<b>44</b>	<b>47</b>	<b>50</b>	<b>53</b>	<b>56</b>	<b>59</b>	<b>62</b>	<b>65</b>
Auxiliary jib	✓	✓	✓	✓	✓	✓	✓	✓	✓	✓	✓	✓	✓	✓	✓	✓
Jip foot 10 m	1	1	1	1	1	1	1	1	1	1	1	1	1	1	1	1
Jip section 3 m		1		1		1		1		1		1		1		1
Jip section 6 m			1	1			1	1			1	1			1	1
Jip section 12 m	4	4	4	4	5	5	5	5	6	6	6	6	7	7	7	7
Jip head 10 m	1	1	1	1	1	1	1	1	1	1	1	1	1	1	1	1
<b>Jip length [m]</b>	<b>68</b>	<b>71</b>	<b>74</b>	<b>77</b>	<b>80</b>	<b>83</b>	<b>86</b>	<b>89</b>	<b>92</b>	<b>95</b>	<b>98</b>	<b>101</b>	<b>104</b>	<b>107</b>	<b>110</b>	<b>113</b>
Auxiliary jib	✓	✓	✓	✓	✓	✓	✓	✓	✓	✓	✓	✓	✓	✓	✓	✓





# Load capacities with luffing jib

Load capacity in [t] with 20 m main boom [88/83/75/65°]

Radius [m]	Jib length 20 m				Jib length 38 m				Jib length 56 m			
	88°	83°	75°	65°	88°	83°	75°	65°	88°	83°	75°	65°
8	117.0											
12	99.5	117.0			89.2							
14	78.0	100.8			73.8							
16	63.8	78.7			59.7				53.2			
18	53.7	64.7	85.3		49.6	63.6			47.3			
20	45.1	53.8	70.6		42.2	52.3			40.5			
22	39.7	45.3	59.7		36.3	44.0			34.0	42.5		
24		39.6	49.7	61.3	32.2	37.8			30.1	38.8		
26			43.8	52.1	29.2	33.1	45.0		26.8	32.8		
28				45.0	26.5	29.9	39.1		24.0	29.6		
30				38.1	24.3	27.0	33.9		21.9	26.1		
32					22.3	24.8	30.2		20.2	23.7	30.1	
34					20.6	22.9	27.6	31.7	18.7	21.6	29.5	
36					19.3	21.3	25.2	27.9	17.3	19.7	25.6	
38					18.0	19.9	23.3	24.8	16.2	18.1	23.2	
40					16.7	18.5	21.7	22.3	15.2	16.8	21.0	
42						17.0	20.1	20.2	14.1	15.7	19.1	
46								17.4	12.2	13.7	16.5	17.9
50									10.8	12.1	14.3	15.0
55									9.3	10.4	12.3	12.1
60											10.3	10.2
65												8.4
Radius [m]	Jib length 74 m				Jib length 92 m				Jib length 110 m			
	88°	83°	75°	65°	88°	83°	75°	65°	88°	83°	75°	65°
20	31.7											
22	30.3											
24	28.2				17.4							
26	25.2				16.8							
28	22.3	28.0			16.4				10.5			
30	20.4	27.6			15.8				10.3			
32	18.5	23.8			14.8				9.9			
34	16.8	21.4			14.0	15.6			9.6			
36	15.4	19.2			13.3	15.2			9.2			
38	14.2	17.3			12.3	14.7			8.9	9.1		
40	13.1	15.9	20.3		11.1	14.3	15.9		8.6	9.1		
42	12.1	14.7	19.8		10.1	13.2	15.2		8.4	8.9		
44	11.1	13.4	18.0		9.2	12.0	14.3		7.8	8.6		
46	10.3	12.3	16.4		8.4	10.9	13.2		7.0	8.4		
50	8.9	10.5	13.9		7.1	9.2	12.7		5.5	7.3		
55	7.5	8.8	11.2	11.8	5.6	7.3	10.9		4.1	5.9	7.5	
60	6.3	7.4	9.4	9.8	4.4	5.7	8.8		2.9	4.7	7.2	
65	5.4	6.2	7.8	8.0	3.6	4.6	6.7	6.7		3.3	6.3	
70	4.6	5.3	6.6	6.4	2.8	3.6	5.2	5.7		2.2	4.7	
75	3.4	4.3	5.5	5.2	2.1	2.8	4.0	4.6			3.2	3.1
80				4.2		2.1	3.0	3.2				2.6
85							2.3	2.2				

Carbody counterweight: 57.2 t with 1200 mm flat track pads

Rear counterweight:

114.0 t

124.0 t

TLT 14168025/0. Above load charts are for reference only. For actual lift duty please refer to load chart in operator's cabin or manual. Otherwise we recommend you to plan your lifting job using Crane Planner 2.0.

# Load capacities with luffing jib

Load capacity in [t] with 35 m main boom [88/83/75/65°]

Radius [m]	Jib length 20 m				Jib length 38 m				Jib length 56 m			
	88°	83°	75°	65°	88°	83°	75°	65°	88°	83°	75°	65°
8.5	117.0											
12	116.4											
13	107.8				80.6							
14	101.1	101.9			79.8							
16	81.4	89.2			73.9				48.4			
18	67.6	79.4			65.5				47.5			
20	56.2	71.5			54.5	65.9			45.5			
22	48.2	62.9	63.0		46.4	59.7			41.3			
24		55.8	57.3		40.8	54.3			38.0	42.8		
26		48.5	53.2		36.2	50.4			34.3	42.0		
28			49.8		32.6	45.4			30.8	40.6		
30			46.6	43.8	30.0	41.5	42.7		28.1	38.6		
32				40.6	27.6	38.1	40.4		25.8	36.4		
36				35.1	23.9	31.2	34.8		21.9	32.2	31.1	
40					20.9	26.6	31.0	29.6	19.1	27.2	28.6	
44						15.2	28.2	26.3	16.7	23.6	25.7	
48							25.6	23.6	14.7	20.0	23.7	
50								22.4	13.8	18.5	22.6	
55									12.1	15.7	19.9	18.5
60										13.3	18.0	16.4
65											16.0	14.7
70												13.2
Radius [m]	Jib length 74 m				Jib length 92 m				Jib length 113 m			
	88°	83°	75°	65°	88°	83°	75°	65°	88°	83°	75°	65°
20	29.0											
22	28.6											
24	27.5				16.4							
26	26.8				16.2							
28	26.2				15.8				9.2			
30	25.8	26.4			15.5				9.1			
32	24.6	26.1			15.1				8.8			
36	20.7	25.2			14.4	15.0			8.4			
38	19.2	24.5			14.1	14.7			8.1			
42	16.7	23.5			12.9	14.1			7.8	8.0		
46	14.4	21.3	21.9		12.0	13.4			7.4	7.6		
50	12.6	18.9	19.9		10.9	12.8			7.1	7.4		
55	10.8	16.5	17.7		8.9	12.0	12.8		6.7	6.9		
60	9.1	13.7	16.0		7.4	11.1	12.2		6.0	6.6	6.6	
65	7.8	11.3	14.4	13.3	6.1	10.4	11.3		4.5	6.2	6.4	
75	5.6	8.0	11.8	10.6	4.0	7.1	9.6	8.6	2.3	5.2	5.8	
80			10.5	9.4	3.1	5.7	8.6	7.8			5.4	
85				8.5	2.4	4.6	7.8	7.0				4.8
90						3.5	7.0	6.3				4.2
95						2.6	6.0	5.6				
100							5.0	4.9				
105								4.2				

Carbody counterweight: 57.2 t with 1200 mm flat track pads

Rear counterweight:

114.0 t

124.0 t

TLT 14168025 / 0. Above load charts are for reference only. For actual lift duty please refer to load chart in operator's cabin or manual. Otherwise we recommend you to plan your lifting job using Crane Planner 2.0.

# Load capacities with luffing jib

Load capacity in [t] with 50 m main boom [88/83/75/65°]

Radius [m]	Jib length 20 m				Jib length 38 m				Jib length 56 m			
	88°	83°	75°	65°	88°	83°	75°	65°	88°	83°	75°	65°
9.1	114.0											
12	99.2											
14	87.5				67.0							
16	74.0	80.3			64.6							
18	63.1	72.3			57.6				42.7			
20	53.4	65.3			49.9				41.2			
22	46.5	59.6			42.8	53.6			38.1			
24		54.6			37.9	49.4			34.4			
26		50.1	47.9		34.0	45.0			31.6	38.8		
28		45.0	44.4		30.8	41.7			28.6	37.5		
30			41.5		28.3	38.7			26.1	35.0		
34			37.0		24.2	33.9	32.8		22.4	30.7		
38				29.4	21.4	28.7	29.5		19.3	27.4		
40				27.6	20.2	26.7	28.2		18.1	25.8	24.3	
42				26.0		24.9	26.7		17.0	24.4	23.6	
46						15.2	23.8		15.0	21.7	21.5	
48							22.8	20.6	14.1	20.1	20.4	
50							21.9	19.5	13.3	18.7	19.5	
55								17.2	11.7	15.6	17.5	
60								15.3		13.4	15.8	13.9
70											11.8	11.1
75												9.9
Radius [m]	Jib length 74 m				Jib length 92 m				Jib length 113 m			
	88°	83°	75°	65°	88°	83°	75°	65°	88°	83°	75°	65°
22	26.3											
24	25.4											
26	24.8				15.0							
28	23.9				14.7							
30	23.3				14.5				8.4			
32	22.6	24.3			14.2				8.3			
34	20.8	24.1			13.8				8.0			
38	17.9	23.2			13.3	14.0			7.7			
40	16.8	22.2			12.7	13.7			7.5			
44	14.6	20.6			11.4	13.2			7.2	7.4		
48	12.7	18.9	17.3		10.5	12.5			6.7	7.2		
50	11.9	18.0	17.1		10.0	12.2			6.4	7.0		
55	10.2	16.1	15.2		8.2	11.6	11.4		5.8	6.6		
60	8.7	13.8	13.6		6.8	10.7	10.7		5.2	6.3		
65	7.4	11.5	12.4		5.7	10.1	9.7		3.9	5.9	6.2	
70	6.4	9.6	11.2	9.3	4.6	9.0	8.6		2.9	5.4	5.9	
75	5.4	8.2	10.2	8.3	3.7	7.3	7.8		2.0	4.9	5.3	
80		6.8	9.3	7.4	2.9	5.9	7.0	5.5		4.6	4.7	
85			8.5	6.6	2.2	4.8	6.2	4.7			4.0	
95				5.2		2.8	5.0	3.5				
105							3.4	2.4				
110								2.0				

Carbody counterweight: 57.2 t with 1200 mm flat track pads

Rear counterweight:

114.0 t

124.0 t

TLT 14168025/0. Above load charts are for reference only. For actual lift duty please refer to load chart in operator's cabin or manual. Otherwise we recommend you to plan your lifting job using Crane Planner 2.0.

# Load capacities with luffing jib

Load capacity in [t] with 65 m main boom [88/83/75/65°]

Radius [m]	Jib length 23 m				Jib length 29 m				Jib length 35 m			
	88°	83°	75°	65°	88°	83°	75°	65°	88°	83°	75°	65°
10.2	69.6											
12	68.1				60.3							
14	65.7				58.6				58.0			
16	62.9				56.5				55.0			
18	55.1	58.0			51.5				51.9			
20	48.1	54.4			46.9	51.1			44.9			
22	42.1	50.6			41.0	48.0			39.6	46.2		
24	37.3	46.5			36.6	44.5			35.2	43.3		
26	33.9	43.4			33.2	41.5			31.6	40.0		
28		40.3			30.3	38.6			28.9	37.6		
30		37.8	34.4		28.1	36.4			26.7	35.0		
32		35.6	32.5		26.2	34.0			24.8	32.6		
34			30.6			32.0	29.4		23.2	30.8		
36			29.0			30.4	27.8		21.8	28.9	26.8	
38			27.6			28.6	26.5		20.4	27.3	25.4	
40			26.5				25.2			25.9	24.0	
44				20.2			23.0			22.7	21.9	
46				19.2			22.2				21.0	
48				18.4			15.2	17.4			20.2	
50				17.4				16.6			19.4	
55								14.8				14.2
60												12.8
Radius [m]	Jib length 44 m				Jib length 53 m				Jib length 62 m			
	88°	83°	75°	65°	88°	83°	75°	65°	88°	83°	75°	65°
16	46.6											
18	45.1				37.5							
20	41.0				36.2				30.2			
22	37.5				33.6				29.3			
24	32.9	39.6			31.0				28.0			
26	29.5	38.2			28.3				26.2			
28	27.0	35.6			25.6	33.0			25.0			
30	24.8	33.0			23.6	31.0			22.8	28.3		
32	22.9	31.0			21.8	29.1			20.9	27.3		
34	21.5	29.0			20.2	27.1			19.4	25.8		
38	18.7	25.8			17.5	24.2			16.8	22.8		
42	16.6	22.9	21.6		15.4	21.7			14.6	20.7		
46	15.0	20.4	19.5		13.6	19.6	18.1		13.0	18.6		
50		18.1	17.9		12.2	17.2	16.6		11.5	17.0	15.5	
55			16.2		10.6	14.9	14.9		9.9	14.6	13.8	
60			14.8	11.7		12.8	13.4		8.7	12.4	12.6	
65				10.5			12.3	9.3	7.2	10.8	11.3	
70				9.5			11.2	8.3	9.2	9.2	10.2	7.3
75								7.5			9.4	6.5
80								6.7				5.8
85												5.1
90												4.6

Carbody counterweight: 57.2 t with 1200 mm flat track pads

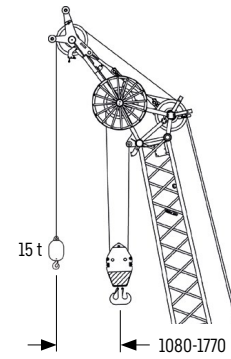
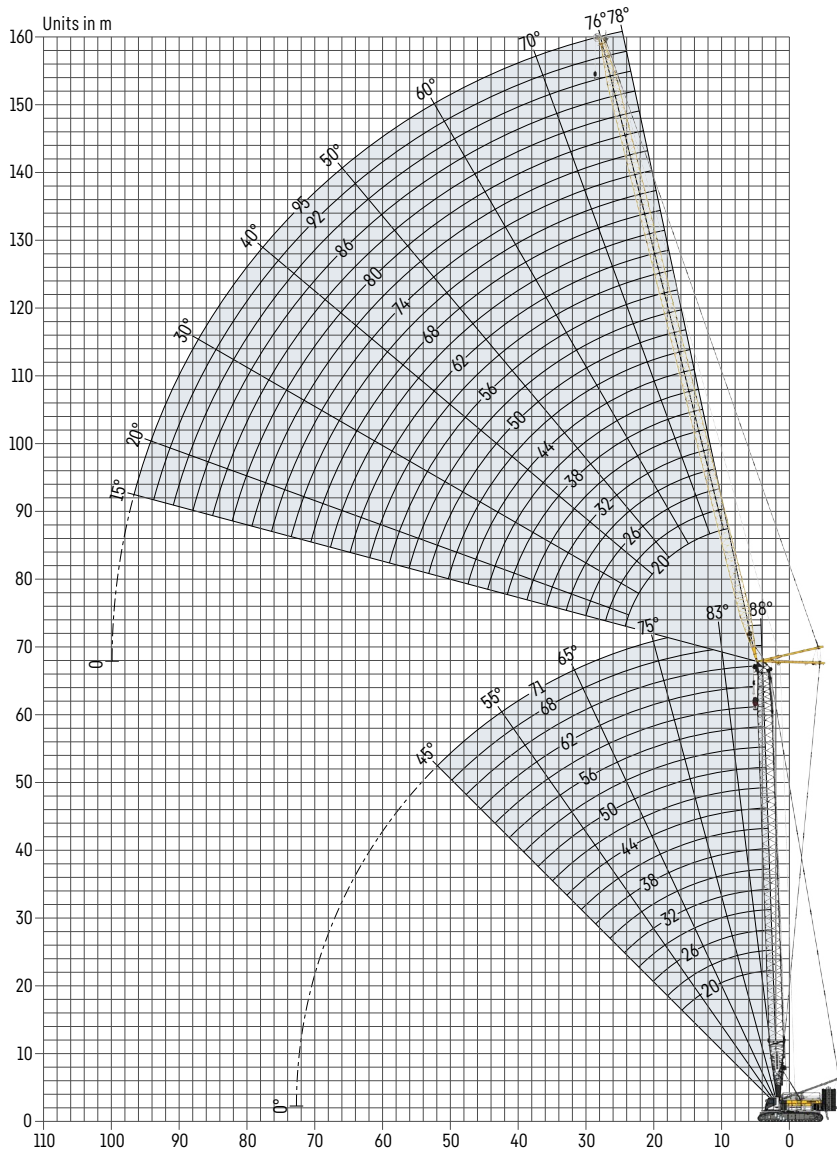
Rear counterweight:

114.0 t

124.0 t

TLT 14168025/0. Above load charts are for reference only. For actual lift duty please refer to load chart in operator's cabin or manual. Otherwise we recommend you to plan your lifting job using Crane Planner 2.0.

# Luffing jib 1916.XX (20-95 m)



## Auxiliary jib 15 t (option)

The maximum capacity of the auxiliary jib for the luffing jib is 15 t.

## Jib configuration 1916.xx

Jib section	Amount of boom sections													
Jib foot 7m	1	1	1	1	1	1	1	1	1	1	1	1	1	1
Jip section 3m		1		1		1		1		1		1		1
Jip section 6m	1	1			1	1			1	1			1	1
Jip section 12m			1	1	1	1	2	2	2	2	3	3	3	3
Jip head 7m	1	1	1	1	1	1	1	1	1	1	1	1	1	1
<b>Jip length [m]</b>	<b>20</b>	<b>23</b>	<b>26</b>	<b>29</b>	<b>32</b>	<b>35</b>	<b>38</b>	<b>41</b>	<b>44</b>	<b>47</b>	<b>50</b>	<b>53</b>	<b>56</b>	
Auxiliary jib	✓	✓	✓	✓	✓	✓	✓	✓	✓	✓	✓	✓	✓	✓
Jib foot 7m	1	1	1	1	1	1	1	1	1	1	1	1	1	1
Jip section 3m	1		1		1		1		1		1		1	1
Jip section 6m	1			1	1			1	1			1	1	1
Jip section 12m	3	4	4	4	4	5	5	5	5	6	6	6	6	6
Jip head 7m	1	1	1	1	1	1	1	1	1	1	1	1	1	1
<b>Jip length [m]</b>	<b>59</b>	<b>62</b>	<b>65</b>	<b>68</b>	<b>71</b>	<b>74</b>	<b>77</b>	<b>80</b>	<b>83</b>	<b>86</b>	<b>89</b>	<b>92</b>	<b>95</b>	
Auxiliary jib	✓	✓	✓	✓	✓	✓	✓	✓	✓	✓	✓	✓	✓	✓

**Maximum load capacity in [t]**

	Main boom [m]														
	29	32	35	38	41	44	47	50	53	56	59	62	65	68	71
20	86.9	86.1	85.4	84.5	83.8	82.8	81.9	78.7	76.1	72.8	70.1	67.0	64.5	61.5	59.2
23	78.8	78.7	77.3	77.1	75.6	74.5	72.9	71.3	68.7	66.6	63.7	61.6	59.0	56.8	54.2
26	72.2	71.3	70.6	69.6	68.9	67.1	65.9	64.1	62.6	60.3	58.4	56.2	54.5	52.2	50.3
29	64.7	64.2	62.8	62.6	61.2	60.5	58.8	57.9	56.1	54.8	52.8	51.4	49.4	47.9	46.0
32	58.5	57.4	56.8	55.8	55.1	53.9	53.0	51.8	50.8	49.4	48.4	46.6	45.3	43.8	42.5
35	51.3	51.3	50.2	49.6	48.3	48.1	46.8	46.3	45.0	44.5	43.2	42.4	41.0	40.1	38.8
38	45.8	45.3	44.8	43.7	43.0	42.4	41.9	41.1	40.4	39.7	39.0	38.2	37.5	36.5	35.7
41	40.7	40.6	39.8	39.6	38.7	38.5	37.7	37.3	36.4	36.1	35.2	34.4	33.4	32.9	31.8
44	36.8	36.4	36.0	35.6	35.3	34.7	34.2	33.6	33.1	32.6	32.1	30.9	30.4	29.6	29.0
47	32.7	32.6	32.0	31.9	31.3	31.1	30.4	30.2	29.4	29.3	28.6	28.3	27.6	27.2	
50	29.8	29.5	29.3	28.9	28.7	28.2	27.9	27.4	26.9	26.5	26.2	25.7	25.3	24.8	
53	27.0	26.9	26.4	26.4	25.9	25.8	25.2	25.0	24.4	24.3	23.8	23.0	22.4	22.2	
56	24.7	24.4	24.1	23.9	23.7	23.3	23.0	22.6	22.4	22.1	21.8	20.8	20.6	20.1	
59	21.4	21.4	21.0	20.9	20.5	20.4	20.0	20.0	19.6	19.4	19.0	18.9	18.6	18.3	
62	19.3	19.2	19.0	18.7	18.5	18.2	18.1	17.9	17.7	17.4	17.2	17.1	17.0	16.6	
65	17.5	17.6	17.3	17.2	16.8	16.8	16.4	16.4	16.1	16.0	15.7	15.6	15.3	15.1	
68	16.1	16.0	15.9	15.7	15.5	15.3	15.1	15.0	14.9	14.6	14.4	14.2	14.0	13.7	
71	14.4	14.4	14.2	14.2	14.0	13.9	13.6	13.6	13.4	13.3	13.0	12.9	12.6	12.5	
74	13.0	13.0	12.9	12.8	12.7	12.5	12.4	12.3	12.2	12.0	11.9	11.7	11.5	11.3	
77	11.7	11.8	11.6	11.6	11.4	11.4	11.2	11.1	10.9	10.9	10.7	10.6	10.4		
80	10.6	10.6	10.5	10.4	10.3	10.2	10.2	10.0	9.9	9.8	9.7	9.5	9.4		
83	9.6	9.6	9.4	9.4	9.2	9.3	9.1	9.1	8.9	8.9	8.7	8.6	8.5		
86	8.7	8.6	8.5	8.4	8.4	8.3	8.2	8.1	8.1	8.0	7.9	7.8	7.7		
89	7.6	7.6	7.5	7.5	7.4	7.4	7.2	7.2	7.1	7.1	6.9	6.9	6.8		
92	6.8	6.7	6.7	6.6	6.5	6.5	6.4	6.4	6.3	6.2	6.2	6.1	6.0		
95	6.2	6.2	6.1	6.1	6.0	6.0	5.9	5.8	5.8	5.7	5.7	5.6	5.6		

Example: To achieve a maximum load capacity of 15 t, a combination of 50 m main boom with 68 m jib length can be selected.

**Maximum pulley height in [m]**

	Main boom [m]														
	29	32	35	38	41	44	47	50	53	56	59	62	65	68	71
20	51.4	54.4	57.3	60.3	63.3	66.3	69.3	72.3	75.3	78.3	81.3	84.3	87.3	90.3	93.3
23	54.3	57.3	60.3	63.3	66.3	69.3	72.3	75.3	78.3	81.3	84.3	87.3	90.3	93.3	96.3
26	57.2	60.2	63.2	66.2	69.2	72.2	75.2	78.2	81.2	84.2	87.2	90.2	93.2	96.2	99.2
29	60.2	63.2	66.2	69.1	72.1	75.1	78.1	81.1	84.1	87.1	90.1	93.1	96.1	99.1	102.1
32	63.1	66.1	69.1	72.1	75.1	78.1	81.1	84.1	87.1	90.1	93.1	96.1	99.1	102.1	105.1
35	66.0	69.0	72.0	75.0	78.0	81.0	84.0	87.0	90.0	93.0	96.0	99.0	102.0	105.0	108.0
38	69.0	72.0	75.0	78.0	81.0	83.9	86.9	89.9	92.9	95.9	98.9	101.9	104.9	107.9	110.9
41	71.9	74.9	77.9	80.9	83.9	86.9	89.9	92.9	95.9	98.9	101.9	104.9	107.9	110.9	113.9
44	74.8	77.8	80.8	83.8	86.8	89.8	92.8	95.8	98.8	101.8	104.8	107.8	110.8	113.8	116.8
47	77.8	80.8	83.8	86.8	89.8	92.8	95.8	98.7	101.7	104.7	107.7	110.7	113.7	116.7	119.7
50	80.7	83.7	86.7	89.7	92.7	95.7	98.7	101.7	104.7	107.7	110.7	113.7	116.7	119.7	
53	83.6	86.6	89.6	92.6	95.6	98.6	101.6	104.6	107.6	110.6	113.6	116.6	119.6	122.6	
56	86.6	89.6	92.6	95.6	98.6	101.6	104.6	107.6	110.6	113.5	116.5	119.5	122.5	125.5	
59	89.5	92.5	95.5	98.5	101.5	104.5	107.5	110.5	113.5	116.5	119.5	122.5	125.5	128.5	
62	92.4	95.4	98.4	101.4	104.4	107.4	110.4	113.4	116.4	119.4	122.4	125.4	128.4	131.4	
65	95.4	98.4	101.4	104.4	107.4	110.4	113.4	116.4	119.4	122.4	125.4	128.3	131.3	134.3	
68	98.3	101.3	104.3	107.3	110.3	113.3	116.3	119.3	122.3	125.3	128.3	131.3	134.3	137.3	
71	101.2	104.2	107.2	110.2	113.2	116.2	119.2	122.2	125.2	128.2	131.2	134.2	137.2	140.2	
74	104.2	107.2	110.2	113.2	116.2	119.2	122.2	125.2	128.2	131.2	134.2	137.2	140.2	143.1	
77	107.1	110.1	113.1	116.1	119.1	122.1	125.1	128.1	131.1	134.1	137.1	140.1	143.1		
80	110.0	113.0	116.0	119.0	122.0	125.0	128.0	131.0	134.0	137.0	140.0	143.0	146.0		
83	113.0	116.0	119.0	122.0	125.0	128.0	131.0	134.0	137.0	140.0	143.0	146.0	149.0		
86	115.9	118.9	121.9	124.9	127.9	130.9	133.9	136.9	139.9	142.9	145.9	148.9	151.9		
89	118.8	121.8	124.8	127.8	130.8	133.8	136.8	139.8	142.8	145.8	148.8	151.8	154.8		
92	121.8	124.8	127.8	130.8	133.8	136.8	139.8	142.8	145.8	148.8	151.8	154.8	157.8		
95	124.7	127.7	130.7	133.7	136.7	139.7	142.7	145.7	148.7	151.7	154.7	157.7	160.7		

# Load capacities with luffing jib

Load capacity in [t] with 29 m main boom [88/83/75/65°]

Radius [m]	Jib length 20 m				Jib length 35 m				Jib length 50 m				
	88°	83°	75°	65°	88°	83°	75°	65°	88°	83°	75°	65°	
8.3	86.9												
10	82.1												
12	75.9				51.0								
14	69.2	77.1			46.5								
16	61.5	70.5			42.6				29.1				
18	54.8	62.0			39.1	42.9			27.6				
20	48.3	56.5	66.7		36.3	39.6			26.1				
22	38.8	50.8	59.7		33.8	36.6			25.0	26.2			
24		43.3	54.6		31.5	34.4			24.0	24.9			
26			50.4		29.7	32.3	36.3		23.2	24.1			
28			45.0	49.8	27.9	30.6	34.4		22.5	23.4			
30				46.3	26.3	28.9	32.7		21.8	22.9			
32				42.8	24.9	27.2	31.0		21.2	22.3	23.2		
34				39.8	22.9	25.8	29.5		20.7	21.7	22.7		
36					20.5	24.0	27.8	32.0	20.2	21.3	22.2		
38						21.9	26.3	30.5	19.2	20.9	21.8		
40							19.6	24.8	18.3	20.0	21.3		
42								22.9	17.5	19.2	21.0		
46									24.6	15.8	17.8	19.4	20.9
50										13.0	15.5	17.9	20.1
55											11.3	15.3	17.9
60													15.7
Radius [m]	Jib length 65 m				Jib length 80 m				Jib length 95 m				
	88°	83°	75°	65°	88°	83°	75°	65°	88°	83°	75°	65°	
18	17.5												
20	16.8												
22	16.1				10.6								
24	15.5				10.1				6.2				
26	15.0	15.3			9.7				6.1				
28	14.5	15.0			9.4				5.8				
30	14.1	14.6			9.2				5.7				
32	13.8	14.2			9.0	9.3			5.5				
34	13.5	13.8			8.7	9.0			5.3				
38	12.8	13.3			8.2	8.5			5.0	5.2			
42	12.3	12.6	13.2		7.9	8.1			4.7	4.9			
46	11.8	12.2	12.7		7.6	7.8	8.1		4.4	4.6			
50	11.2	11.6	12.2		7.2	7.4	7.7		4.2	4.4			
55	10.6	11.0	11.6	12.0	7.0	7.1	7.3		3.8	4.0	4.3		
60	9.4	10.3	11.0	11.6	6.7	6.8	7.0		3.5	3.6	4.0		
65	7.7	8.8	10.3	11.1	6.4	6.6	6.7	6.9	3.2	3.4	3.6		
70			9.1	10.6	6.2	6.3	6.5	6.6	2.8	3.0	3.3	3.5	
75				9.6	5.4	5.8	6.3	6.4	2.5	2.7	3.0	3.3	
80					4.6	5.3	5.9	6.3	2.3	2.4	2.7	3.0	
85							5.6	6.1		2.2	2.4	2.7	
90								6.0			2.2	2.4	
95												2.2	

Carbody counterweight: 57.2 t with 1200 mm flat track pads

Rear counterweight:

114.0 t

124.0 t

TLT 14168025/0. Above load charts are for reference only. For actual lift duty please refer to load chart in operator's cabin or manual. Otherwise we recommend you to plan your lifting job using Crane Planner 2.0.



# Load capacities with luffing jib

Load capacity in [t] with 44 m main boom [88/83/75/65°]

Radius [m]	Jib length 20 m				Jib length 35 m				Jib length 50 m			
	88°	83°	75°	65°	88°	83°	75°	65°	88°	83°	75°	65°
8.9	82.8											
10	78.9											
12	70.5				48.1							
16	57.0	69.2			41.5				28.0			
20	47.7	55.4			35.8	40.3			25.4			
22	41.5	50.8			33.6	37.5			24.3			
24		46.7	54.1		31.4	35.1			23.4	24.5		
26		41.3	50.0		29.7	33.3			22.6	23.7		
28			46.8		28.1	31.5			22.0	23.2		
30			43.8		26.6	30.2	35.0		21.4	22.5		
32			40.9		25.2	28.6	33.5		20.9	22.0		
34				36.2	23.7	27.0	32.0		20.5	21.6		
36				34.1	21.6	25.7	30.6		20.1	21.1	22.3	
38				32.0	19.4	24.1	29.2		19.5	20.7	22.0	
40				30.0		22.1	27.6		18.7	20.4	21.5	
42						20.1	26.3	26.6	18.0	19.6	21.1	
46							23.2	24.7	16.7	18.2	20.4	
48							21.4	23.4	15.3	17.7	19.8	
50								22.3	13.9	16.8	19.0	
55								19.8		13.6	17.5	18.5
60											14.8	17.0
70												13.1
Radius [m]	Jib length 65 m				Jib length 80 m				Jib length 95 m			
	88°	83°	75°	65°	88°	83°	75°	65°	88°	83°	75°	65°
20	16.4											
22	15.6				10.2							
24	15.0				9.8							
26	14.6				9.5				5.9			
28	14.2	14.8			9.2				5.7			
30	13.8	14.5			8.9				5.5			
32	13.5	14.2			8.7	9.0			5.3			
34	13.2	13.8			8.5	8.9			5.2			
38	12.7	13.3			8.0	8.5			4.9	5.2		
42	12.1	12.7			7.7	8.0			4.6	4.8		
46	11.7	12.2	12.9		7.4	7.7			4.3	4.6		
50	11.2	11.8	12.5		7.1	7.4	7.8		4.1	4.3		
55	10.6	11.2	11.9		6.8	7.0	7.4		3.8	4.0	4.3	
60	9.7	10.8	11.5	11.9	6.5	6.8	7.1		3.4	3.7	4.0	
65	8.2	9.6	11.1	11.5	6.3	6.5	6.8		3.2	3.4	3.8	
70		8.2	10.3	11.1	6.1	6.3	6.5	6.7	2.8	3.1	3.5	
75			9.1	10.8	5.5	6.0	6.3	6.5	2.5	2.8	3.2	
80				10.0	4.9	5.6	6.2	6.3	2.3	2.5	2.9	3.2
85						5.1	5.9	6.2	2.0	2.3	2.6	3.0
90							5.6	6.1		2.0	2.4	2.7
95								6.1			2.2	2.5
105												2.1

Carbody counterweight: 57.2 t with 1200 mm flat track pads

Rear counterweight:

114.0 t

124.0 t

TLT 14168025/0. Above load charts are for reference only. For actual lift duty please refer to load chart in operator's cabin or manual. Otherwise we recommend you to plan your lifting job using Crane Planner 2.0.

# Load capacities with luffing jib

Load capacity in [t] with 59 m main boom [88/83/75/65°]

Radius [m]	Jib length 20 m				Jib length 35 m				Jib length 50 m			
	88°	83°	75°	65°	88°	83°	75°	65°	88°	83°	75°	65°
9.4	70.1											
12	62.2											
14	55.5				42.0							
16	50.3				39.2				26.2			
18	46.2	58.6			36.8				25.3			
20	42.4	52.5			34.2				24.2			
22	39.2	47.4			32.3	36.2			23.1			
24	35.2	44.0			30.4	34.0			22.4			
26		41.2			28.8	32.2			21.8	23.0		
28		38.4	41.4		27.6	30.8			21.3	22.5		
30			38.5		26.1	29.3			20.8	22.0		
32			36.3		24.8	28.2			20.3	21.6		
36			32.6		21.8	25.4	29.1		19.4	20.8		
40				26.2		23.0	26.3		18.3	20.0	21.2	
44				23.6		15.2	24.0		17.2	19.0	20.6	
46				22.4			23.1		16.7	18.4	20.2	
48							22.2		15.6	17.9	19.6	
50							21.4	19.0	14.3	17.4	19.1	
55								17.2		14.8	17.5	
60								15.4			16.0	14.1
65											14.0	12.9
75												10.8
Radius [m]	Jib length 65 m				Jib length 80 m				Jib length 95 m			
	88°	83°	75°	65°	88°	83°	75°	65°	88°	83°	75°	65°
20	15.6											
22	14.9				9.7							
24	14.4				9.5							
26	13.9				9.1				5.7			
30	13.2	14.0			8.6				5.3			
34	12.6	13.4			8.3	8.6			5.0			
38	12.2	12.9			7.8	8.3			4.7			
42	11.6	12.4			7.5	8.0			4.5	4.8		
46	11.3	11.9	12.5		7.2	7.6			4.2	4.5		
50	10.7	11.5	12.2		6.9	7.3			4.0	4.3		
55	10.1	11.0	11.8		6.6	7.0	7.4		3.7	4.0		
60	9.4	10.5	11.4		6.4	6.7	7.1		3.4	3.7	4.1	
65	8.2	9.8	11.0		6.2	6.5	6.8		3.1	3.4	3.8	
70		8.6	10.6	9.9	6.0	6.2	6.5		2.8	3.2	3.6	
75			9.8	9.2	5.6	6.1	6.3	6.5	2.5	2.8	3.3	
80			8.8	8.5	5.0	5.7	6.2	6.3	2.2	2.6	3.1	
85				8.0			6.0	6.1		2.3	2.8	3.2
90				7.4			5.3	5.8		2.1	2.5	2.9
95								5.6			2.3	2.7
100									5.4		2.1	2.5
105									4.4			2.3
110												2.1

Carbody counterweight: 57.2 t with 1200 mm flat track pads

Rear counterweight:

114.0 t

124.0 t

TLT 14168025 / 0. Above load charts are for reference only. For actual lift duty please refer to load chart in operator's cabin or manual. Otherwise we recommend you to plan your lifting job using Crane Planner 2.0.

# Load capacities with luffing jib

Load capacity in [t] with 71 m main boom [88/83/75/65°]

Radius [m]	Jib length 20 m				Jib length 23 m				Jib length 26 m			
	88°	83°	75°	65°	88°	83°	75°	65°	88°	83°	75°	65°
9.8	59.2											
11	59.2				54.2				50.3			
12	56.2				54.1				50.1			
14	50.4				49.8				48.1			
16	45.7				45.0				44.5			
18	41.8	53.5			41.2				41.0			
20	38.5	50.1			38.2	48.4			37.7	45.4		
22	35.9	45.1			35.7	44.7			35.3	44.4		
24	33.8	41.0			33.7	41.2			33.4	40.9		
26		38.6			31.6	38.5			31.7	38.4		
28		36.6				36.5			29.9	36.4		
30		34.9	30.1			34.8			27.6	34.8		
32			31.9			32.8	31.3			33.3		
34			30.0				29.5			31.5	29.2	
36			28.4				28.0			28.9	27.6	
38			27.2				26.6				26.3	
40			26.0				25.4				25.1	
42							24.4				24.0	
46				19.1							22.0	
48				18.2				17.9				
50				17.5				17.1				16.9
55								15.3				15.3
Radius [m]	Jib length 32 m				Jib length 38 m				Jib length 44 m			
	88°	83°	75°	65°	88°	83°	75°	65°	88°	83°	75°	65°
13	42.4											
14	41.8				35.7							
16	40.0				34.1				28.7			
18	37.8				32.0				27.2			
20	35.4				30.3				25.6			
22	33.5	37.6			28.5				24.3			
24	31.6	36.2			27.2	30.7			22.9			
26	30.2	34.7			25.9	29.5			21.8	24.8		
28	28.6	33.4			24.8	28.3			20.9	24.0		
30	27.1	31.9			23.9	27.4			19.9	23.0		
32	25.8	30.8			22.8	26.2			19.1	22.1		
34	23.8	29.4			21.9	25.2			18.4	21.2		
36	21.7	28.1	26.3		21.0	24.5			17.6	20.3		
38		27.0	25.0		20.0	23.4	23.5		16.8	19.5		
42		22.8	22.8		17.6	21.5	21.8		15.4	18.0	20.3	
46			20.9			19.4	20.0		14.1	16.5	18.6	
50			19.4				18.4			15.2	17.2	
55				14.6			16.9	12.9			15.6	
60				13.3				12.8			14.4	11.9
65								11.7				10.9
70								9.0				10.0
75												9.2

Carbody counterweight: 57.2 t with 1200 mm flat track pads

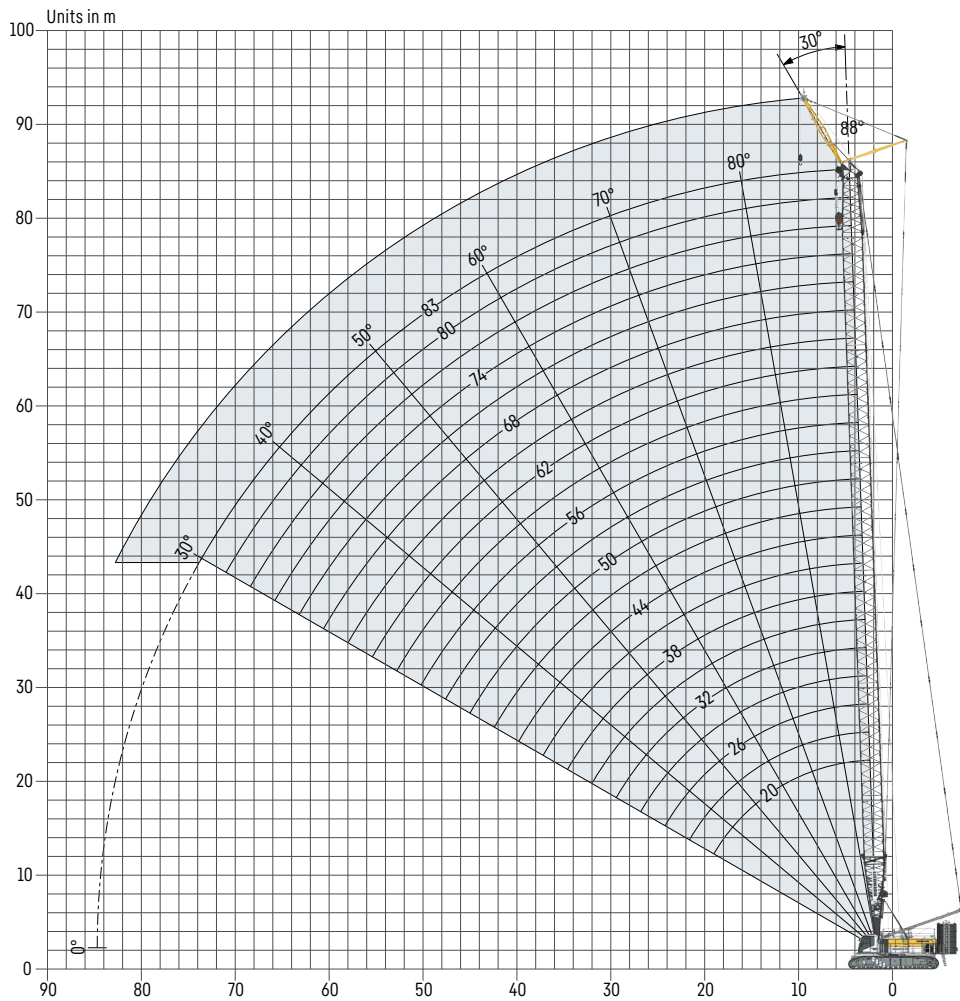
Rear counterweight:

114.0 t

124.0 t

TLT 14168025/0. Above load charts are for reference only. For actual lift duty please refer to load chart in operator's cabin or manual. Otherwise we recommend you to plan your lifting job using Crane Planner 2.0.

# Fixed jib 1507.20 (8 m)



## Maximum load capacity in [t] with 8 m jib length

Main boom [m]											
50	53	56	59	62	65	68	71	74	77	80	83
117.0	117.0	117.0	117.0	117.0	110.3	103.7	97.8	91.8	86.8	81.9	76.9

## Maximum pulley height in [m] with 8 m jib length

Main boom [m]											
50	53	56	59	62	65	68	71	74	77	80	83
59.9	62.9	65.8	68.8	71.8	74.8	77.8	80.8	83.8	86.8	89.8	92.8

## Load capacities with fixed jib

Load capacity in [t] with 50 m main boom

Radius [m]	Jib length 8 m
8.3	117.0
12	111.9
14	106.0
16	91.2
18	80.6
20	72.0
24	58.0
28	47.8
32	39.4
36	33.0
40	28.1
50	19.2

Load capacity in [t] with 56 m main boom

Radius [m]	Jib length 8 m
8.5	117.0
12	112.6
14	101.1
16	90.0
20	70.4
24	56.6
28	47.3
32	38.9
36	32.5
40	27.6
50	18.7
55	15.5

Load capacity in [t] with 62 m main boom

Radius [m]	Jib length 8 m
8.8	117.0
12	110.3
14	96.8
16	87.4
20	67.7
24	55.1
28	45.5
32	38.2
36	31.8
40	26.9
50	18.0
60	12.3

Load capacity in [t] with 71 m main boom

Radius [m]	Jib length 8 m
9.1	97.8
12	93.1
14	86.6
16	79.9
18	73.2
22	57.8
26	47.7
30	39.7
40	25.9
50	17.1
60	11.4
70	7.2

Load capacity in [t] with 77 m main boom

Radius [m]	Jib length 8 m
9.3	86.8
12	83.3
14	79.2
16	74.4
18	70.8
22	56.5
26	46.1
30	38.3
40	25.2
50	16.5
60	10.7
75	5.0

Load capacity in [t] with 83 m main boom

Radius [m]	Jib length 8 m
9.6	76.9
12	74.8
14	71.8
18	65.1
22	54.5
26	44.4
30	36.8
40	24.0
50	15.8
60	10.0
70	5.9
80	2.8

Carbody counterweight: 57.2 t with 1200 mm flat track pads

Rear counterweight:

114.0 t

124.0 t

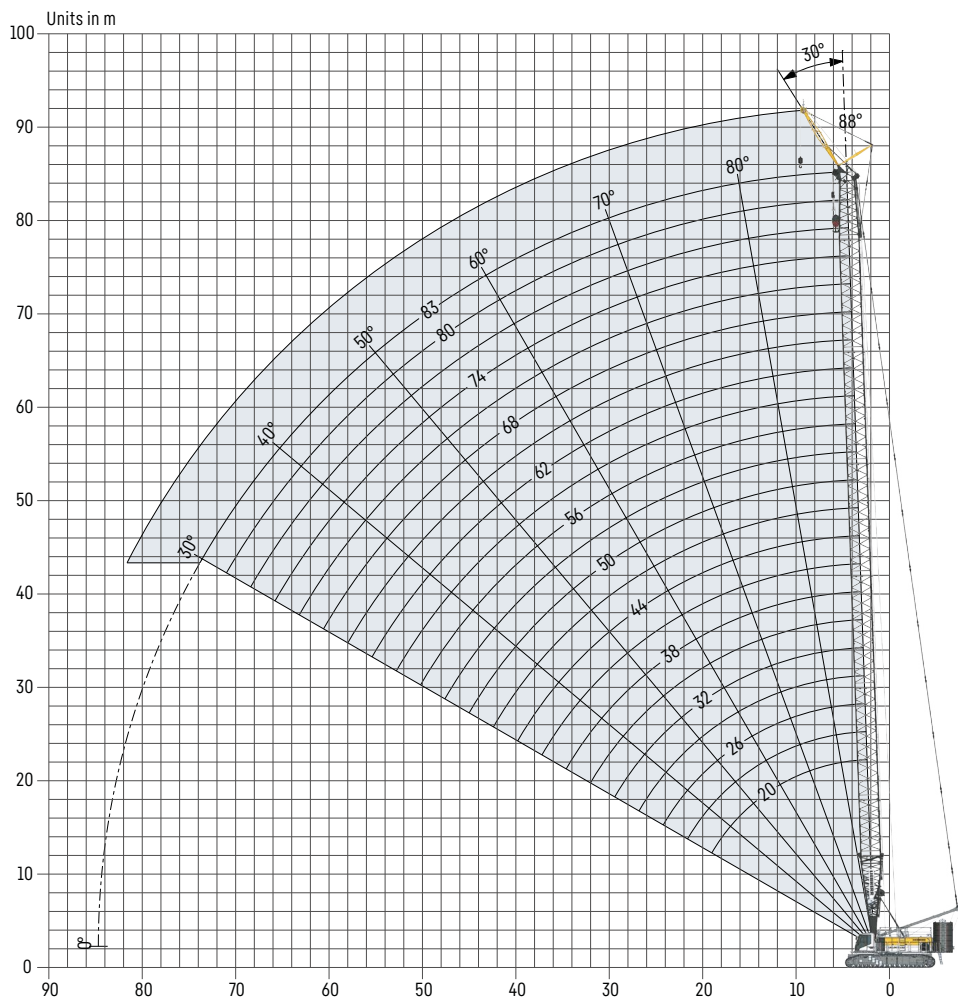
TLT 14163395 / 345602. Above load charts are for reference only. For actual lift duty please refer to load chart in operator's cabin or manual. Otherwise we recommend you to plan your lifting job using Crane Planner 2.0.



**Crane Planner 2.0**



# Fixed jib 0906.21 (7 m)



## Maximum load capacity in [t] with 7 m jib length

																					Main boom [m]	
20	23	26	29	32	35	38	41	44	47	50	53	56	59	62	65	68	71	74	77	80	83	
84.2	84.9	84.7	84.5	84.3	84.1	83.9	83.7	83.5	83.3	83.0	82.8	82.6	82.3	82.0	81.8	81.5	81.0	80.9	80.2	79.4	77.7	

## Maximum pulley height in [m] with 7 m jib length

																					Main boom [m]	
20	23	26	29	32	35	38	41	44	47	50	53	56	59	62	65	68	71	74	77	80	83	
28.8	31.8	34.8	37.8	40.8	43.8	46.8	49.8	52.8	55.8	58.8	61.8	64.8	67.8	70.8	73.8	76.8	79.8	82.8	85.8	88.8	91.8	

## Load capacities with fixed jib

Load capacity in [t] with 20 m main boom

Radius [m]	Jib length 7 m
7.1	84.2
8	80.9
10	73.2
12	66.9
13	63.9
14	61.6
16	57.8
18	54.3
20	51.6
22	49.2
24	47.8
26	46.9

Load capacity in [t] with 35 m main boom

Radius [m]	Jib length 7 m
7.6	84.1
8	83.4
10	77.5
12	73.2
14	68.8
18	61.9
22	57.2
26	53.2
30	45.1
34	37.9
38	32.2
40	29.9

Load capacity in [t] with 47 m main boom

Radius [m]	Jib length 7 m
8	83.3
12	75.4
16	68.8
20	63.2
24	58.8
28	48.6
32	40.2
36	33.9
40	29.0
44	24.9
48	21.6
50	20.1

Load capacity in [t] with 59 m main boom

Radius [m]	Jib length 7 m
8.4	82.3
12	77.0
16	71.5
20	66.7
24	55.8
28	47.2
32	39.1
36	32.7
40	27.8
44	23.8
50	19.0
60	13.2

Load capacity in [t] with 71 m main boom

Radius [m]	Jib length 7 m
8.8	81.0
12	78.0
16	73.1
20	61.8
24	53.0
28	44.0
32	37.3
36	31.5
40	26.5
50	17.7
60	12.0
70	7.9

Load capacity in [t] with 83 m main boom

Radius [m]	Jib length 7 m
9.3	77.7
12	75.2
14	72.0
16	68.5
20	60.8
24	49.7
30	37.6
40	24.7
50	16.4
60	10.7
70	6.6
80	3.6

Carbody counterweight: 57.2 t with 1200 mm flat track pads

Rear counterweight:

114.0 t

124.0 t

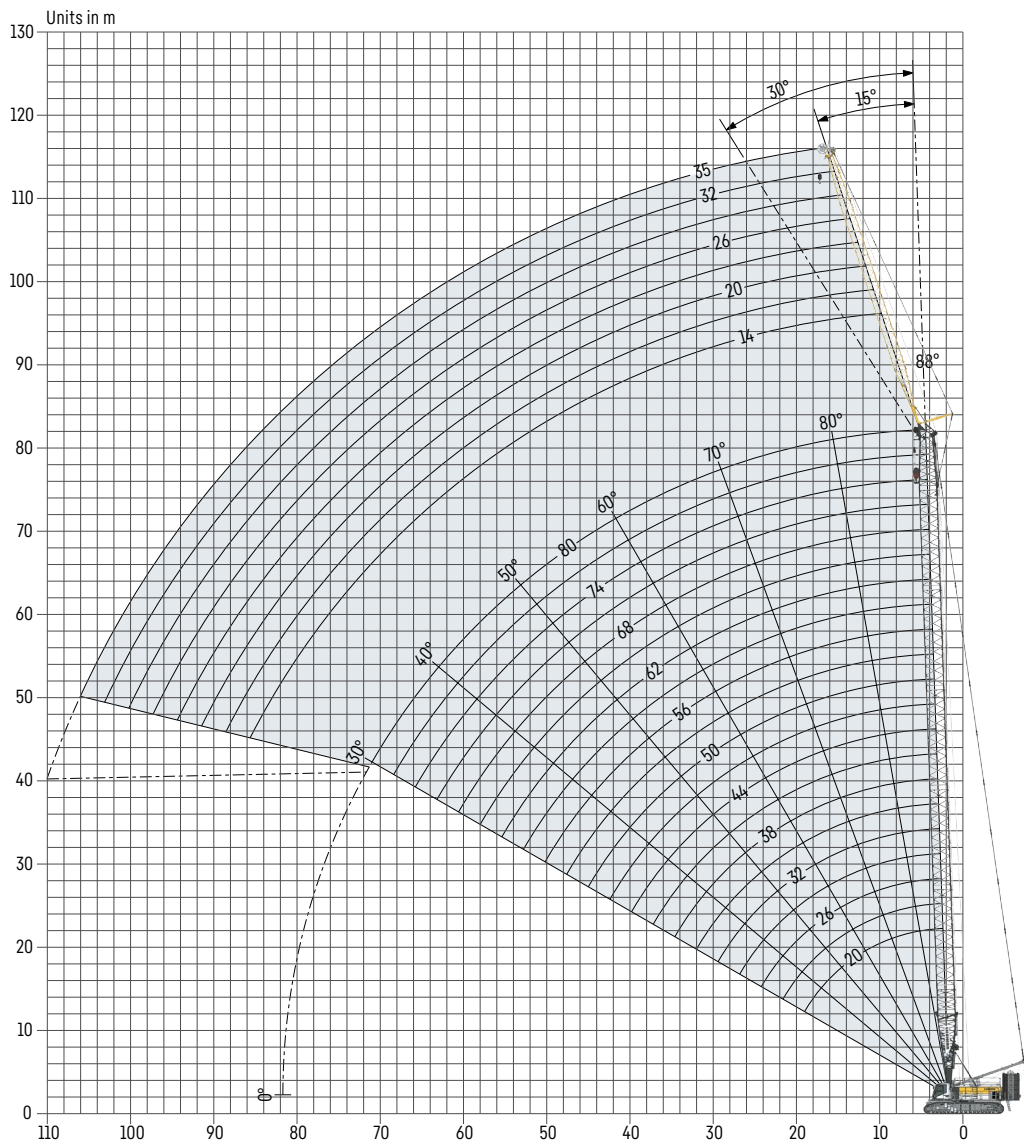
TLT 14168025 / 0. Above load charts are for reference only. For actual lift duty please refer to load chart in operator's cabin or manual. Otherwise we recommend you to plan your lifting job using Crane Planner 2.0.



**Crane Planner 2.0**



# Fixed jib 1713.XX (14-35 m)



## Jib configuration 1713.xx

Jib section	Amount of boom sections							
Jib foot 7m	1	1	1	1	1	1	1	1
Jib section 3m		1		1		1		1
Jib section 6m			1	1			1	1
Jib section 12m					1	1	1	1
Jib head 7m	1	1	1	1	1	1	1	1
<b>Jib length [m]</b>	<b>14</b>	<b>17</b>	<b>20</b>	<b>23</b>	<b>26</b>	<b>29</b>	<b>32</b>	<b>35</b>



### Maximum load capacity in [t]

		Main boom [m]										
		20	23	26	29	32	35	38	41	44	47	50
Jib length [m]	14	60.0	60.0	60.0	60.0	60.0	60.0	60.0	60.0	60.0	60.0	60.0
	17	56.6	56.4	57.6	56.0	57.1	55.5	56.6	55.0	56.1	54.5	55.3
	20	44.4	44.3	44.0	43.8	43.7	43.7	43.6	43.5	43.2	42.9	42.5
	23	36.8	36.5	37.1	36.3	36.9	36.2	36.7	36.0	36.4	35.6	36.0
	26	30.7	30.6	30.5	30.5	30.4	30.3	30.2	30.1	30.1	30.1	30.1
	29	26.6	26.5	26.8	26.4	26.7	26.2	26.5	26.0	26.3	25.8	26.1
	32	23.2	23.2	23.1	23.0	22.9	22.9	22.8	22.7	22.6	22.6	22.5
35	20.5	20.4	20.3	20.3	20.2	20.2	20.1	20.0	20.0	19.9	19.8	
		Main boom [m]										
		53	56	59	62	65	68	71	74	77	80	
Jib length [m]	14	60.0	60.0	60.0	60.0	60.0	60.0	60.0	60.0	58.9	58.4	
	17	53.5	54.5	52.9	54.0	52.5	52.5	50.5	50.4	48.4	49.4	
	20	42.1	41.9	41.8	41.5	41.4	41.1	40.9	40.5	40.2		
	23	35.1	35.6	34.8	35.3	34.5	34.9	34.0	34.3	33.5		
	26	30.1	30.0	29.8	29.6	29.5	29.2	29.0	28.7	28.5		
	29	25.7	25.9	25.5	25.7	25.3	25.5	25.0	25.0			
	32	22.4	22.3	22.3	22.2	22.1	22.0	21.9	21.6			
35	19.8	19.7	19.6	19.6	19.5	19.4	19.3	19.3				

Example: To achieve a maximum load capacity of 23 t, a combination of 29 m main boom with 32 m jib length can be selected.

### Maximum pulley height in [m]

		Main boom [m]										
		20	23	26	29	32	35	38	41	44	47	50
Jib length [m]	14	36.4	39.4	42.4	45.4	48.4	51.3	54.3	57.3	60.3	63.3	66.3
	17	39.2	42.2	45.2	48.2	51.2	54.2	57.1	60.1	63.1	66.1	69.1
	20	42.0	45.0	48.0	51.0	54.0	57.0	60.0	62.9	65.9	68.9	71.9
	23	44.8	47.8	50.8	53.8	56.8	59.8	62.8	65.8	68.7	71.7	74.7
	26	47.6	50.6	53.6	56.6	59.6	62.6	65.6	68.6	71.6	74.5	77.5
	29	50.4	53.4	56.4	59.4	62.4	65.4	68.4	71.4	74.4	77.4	80.3
	32	53.2	56.2	59.2	62.2	65.2	68.2	71.2	74.2	77.2	80.2	83.1
35	56.0	59.0	62.0	65.0	68.0	71.0	74.0	77.0	80.0	83.0	85.9	
		Main boom [m]										
		53	56	59	62	65	68	71	74	77	80	
Jib length [m]	14	69.3	72.3	75.3	78.3	81.3	84.3	87.3	90.3	93.3	96.3	
	17	72.1	75.1	78.1	81.1	84.1	87.1	90.1	93.1	96.1	99.1	
	20	74.9	77.9	80.9	83.9	86.9	89.9	92.9	95.9	98.9		
	23	77.7	80.7	83.7	86.7	89.7	92.7	95.7	98.7	101.7		
	26	80.5	83.5	86.5	89.5	92.5	95.5	98.5	101.5	104.5		
	29	83.3	86.3	89.3	92.3	95.3	98.3	101.3	104.3			
	32	86.1	89.1	92.1	95.1	98.1	101.1	104.1	107.1			
35	88.9	91.9	94.9	97.9	100.9	103.9	106.9	109.9				



**Crane Planner 2.0**



# Load capacities with fixed jib

## Load capacity in [t] with 20 m main boom

	Jib length 14 m		Jib length 17 m		Jib length 23 m		Jib length 29 m		Jib length 35 m	
	15 °	30 °	15 °	30 °	15 °	30 °	15 °	30 °	15 °	30 °
7.2	60.0									
9	58.4		53.5							
11	52.6	37.5	45.8		35.5					
13	46.0	34.2	40.5	30.0	31.1		26.2			
16	38.8	30.4	33.9	26.4	26.5	20.8	22.2			
20	31.7	26.5	28.3	23.0	22.0	18.0	18.6	15.0	19.4	16.1
24	27.4	23.7	24.0	20.5	18.9	15.9	15.8	13.2	13.8	11.3
32	21.7	20.5	18.8	17.3	14.7	13.1	12.2	10.8	10.6	9.1
34		20.1	18.0	16.9	13.9	12.6	11.6	10.3	9.9	8.6
36			17.2	16.6	13.3	12.2	11.0	9.8	9.4	8.2
42					11.8	11.5	9.6	8.9	8.1	7.3
48							8.6	8.4	7.1	6.6
50									6.9	6.4
55										6.3

## Load capacity in [t] with 32 m main boom

	Jib length 14 m		Jib length 17 m		Jib length 23 m		Jib length 29 m		Jib length 35 m	
	15 °	30 °	15 °	30 °	15 °	30 °	15 °	30 °	15 °	30 °
7.7	60.0									
9	60.0		57.0							
11	56.5	38.2	50.1		36.9					
13	51.4	35.6	45.1	31.2	33.4					
16	45.0	32.3	39.1	28.3	29.5		23.6		19.7	
20	37.9	29.0	33.0	25.4	24.9	19.0	20.2	15.4	16.9	
24	32.7	26.5	29.2	23.0	21.7	17.3	17.8	13.9	14.7	11.5
36	24.0	21.5	21.0	18.5	15.9	13.6	12.8	10.9	10.6	8.8
44	20.9	20.1	18.1	17.1	13.5	12.2	10.8	9.6	8.9	7.7
46			17.6	16.9	13.1	12.0	10.4	9.3	8.5	7.4
50					12.3	11.8	9.7	8.9	7.9	7.0
55							9.1	8.6	7.3	6.6
60									6.8	6.4
65										6.3

## Load capacity in [t] with 44 m main boom

	Jib length 14 m		Jib length 17 m		Jib length 23 m		Jib length 29 m		Jib length 35 m	
	15 °	30 °	15 °	30 °	15 °	30 °	15 °	30 °	15 °	30 °
8.1	60.0									
10	60.0		54.6							
12	56.5	37.4	49.6		35.9					
14	53.0	35.4	45.3	30.6	32.9		26.2			
16	48.3	33.7	42.4	29.0	30.3		24.4		20.0	
18	45.0	32.0	39.1	27.7	28.8	20.4	22.6		18.6	
24	37.3	28.2	32.0	24.5	23.7	18.0	18.8	14.2	15.5	11.6
36	28.0	23.4	24.0	20.0	17.7	14.7	14.2	11.5	11.5	9.3
50	20.7	20.2	18.8	17.3	13.9	12.4	11.0	9.6	8.8	7.5
55		15.2	17.4	16.7	13.0	11.9	10.1	9.1	8.1	7.1
60					12.2	11.7	9.5	8.7	7.5	6.7
65							9.0	8.6	7.1	6.5
70								7.4	6.7	6.3
75									6.3	6.3

Carbody counterweight: 57.2 t with 1200 mm flat track pads

Rear counterweight:

114.0 t    124.0 t

TLT 14168025/0. Above load charts are for reference only. For actual lift duty please refer to load chart in operator's cabin or manual. Otherwise we recommend you to plan your lifting job using Crane Planner 2.0.

# Load capacities with fixed jib

## Load capacity in [t] with 56 m main boom

	Jib length 14 m		Jib length 17 m		Jib length 23 m		Jib length 29 m		Jib length 35 m	
	15 °	30 °	15 °	30 °	15 °	30 °	15 °	30 °	15 °	30 °
8.5	60.0									
10	60.0		54.5							
12	58.4	37.6	50.5		35.6					
14	54.8	36.0	46.7	30.8	33.4		25.9			
18	47.8	33.2	41.3	28.3	29.8	20.6	23.2		18.8	
22	43.3	30.7	36.6	26.3	26.3	19.1	20.9	15.0	16.9	
24	40.7	29.8	34.7	25.4	25.0	18.5	19.8	14.5	16.2	10.9
36	30.3	24.9	26.3	21.3	19.4	15.4	15.2	12.0	12.3	9.5
48	20.8	21.1	20.7	18.5	15.8	13.4	12.4	10.3	9.9	8.2
65	11.6	11.7	11.8	12.0	12.4	11.7	9.9	8.9	7.8	6.8
70					10.4	10.7	9.3	8.6	7.3	6.6
75							8.8	8.4	7.0	6.4
80								8.0	6.6	6.3
85									6.3	6.2

## Load capacity in [t] with 68 m main boom

	Jib length 14 m		Jib length 17 m		Jib length 23 m		Jib length 29 m		Jib length 35 m	
	15 °	30 °	15 °	30 °	15 °	30 °	15 °	30 °	15 °	30 °
8.9	60.0									
10	60.0		52.5							
14	56.6	36.2	47.8	30.4	33.7					
16	53.3	35.0	45.0	29.7	31.9		24.8			
18	50.5	33.6	43.2	28.7	30.1	20.6	23.6		19.0	
22	45.0	31.6	38.5	26.9	27.5	19.3	21.4	15.1	17.2	
26	41.1	29.8	35.2	25.2	24.9	18.2	19.6	14.2	15.9	11.3
34	33.4	26.8	29.0	22.8	21.3	16.4	16.8	12.7	13.5	10.1
50	18.0	18.6	18.4	18.4	16.5	13.8	12.9	10.6	10.4	8.3
75	6.8	6.9	7.0	7.2	7.6	7.9	8.1	8.3	7.6	6.7
80					6.1	6.4	6.6	7.0	7.0	6.4
85						4.9	5.4	5.6	5.7	6.1
90							4.2	4.3	4.6	4.9
95									3.6	3.7

## Load capacity in [t] with 80 m main boom

	Jib length 14 m		Jib length 17 m		Jib length 23 m		Jib length 29 m		Jib length 35 m	
	15 °	30 °	15 °	30 °	15 °	30 °	15 °	30 °	15 °	30 °
9.4	58.4									
11	58.0		49.4							
13	55.8	36.5	47.3							
16	52.4	35.2	44.2	28.6						
20	48.8	33.1	40.0	26.9						
24	44.4	31.3	36.2	25.5						
28	40.6	29.7	33.4	24.1						
32	33.9	28.1	30.2	23.2						
40	24.8	25.1	25.0	21.3						
48	18.1	18.9	18.5	18.5						
55	13.6	14.2	13.9	14.6						
65	8.8	9.2	9.1	9.6						
75	5.3	5.7	5.6	5.9						
85	2.7	2.8	3.0	3.1						

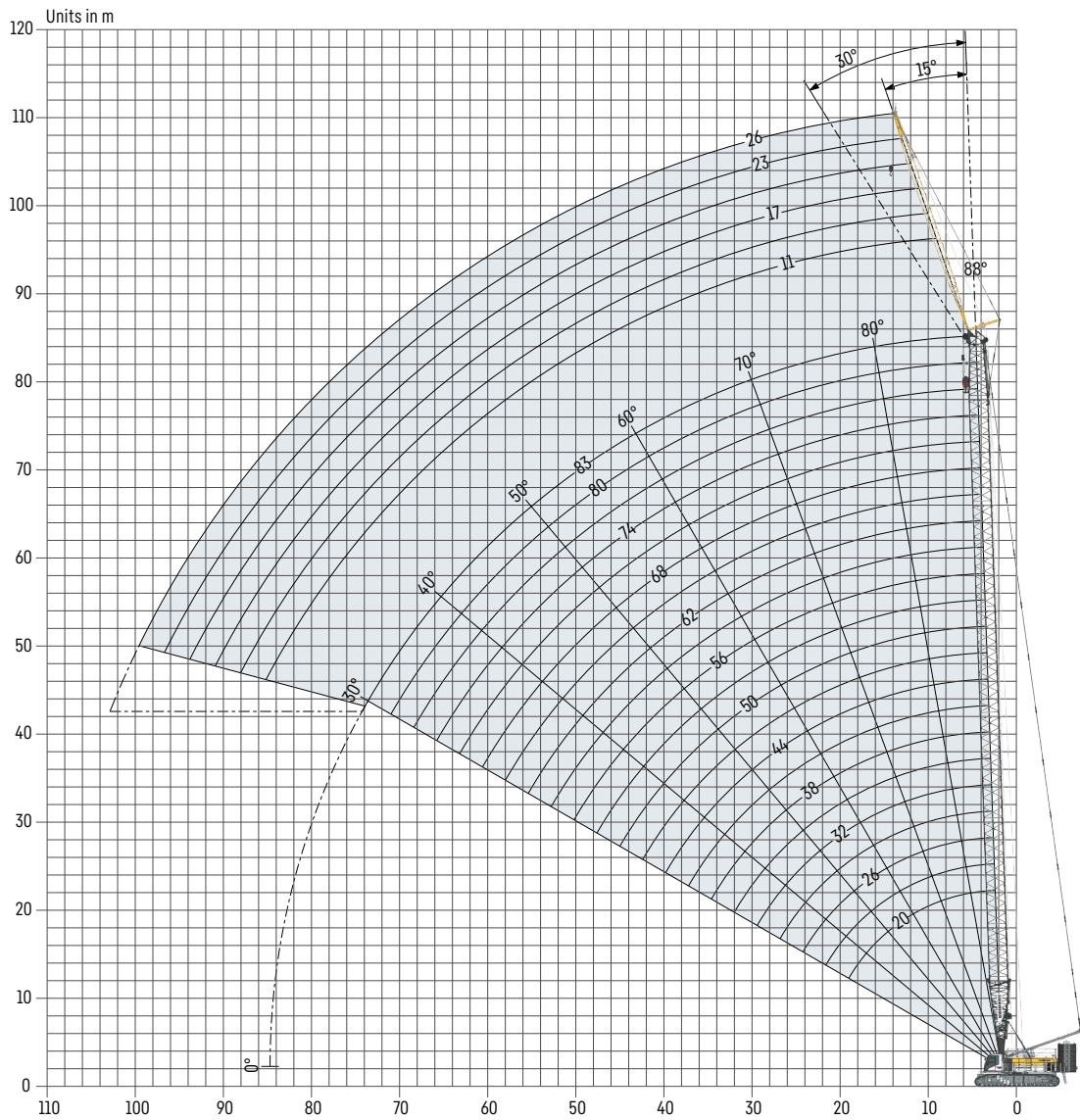
Carbody counterweight: 57.2 t with 1200 mm flat track pads

Rear counterweight:

114.0 t    124.0 t

TLT 14168025/0. Above load charts are for reference only. For actual lift duty please refer to load chart in operator's cabin or manual. Otherwise we recommend you to plan your lifting job using Crane Planner 2.0.

# Fixed jib 1008.XX (11-26 m)



## Jib configuration 1008.xx

Jib section	Amount of jib sections					
	11	14	17	20	23	26
Jib foot 5.5 m	1	1	1	1	1	1
Jib section 3 m		1		1		1
Jib section 6 m			1	1	2	2
Jib head 5.5 m	1	1	1	1	1	1
<b>Jib length [m]</b>	<b>11</b>	<b>14</b>	<b>17</b>	<b>20</b>	<b>23</b>	<b>26</b>

### Maximum load capacity in [t]

		Main boom [m]										
		20	23	26	29	32	35	38	41	44	47	50
Jib length [m]	11	45.0	45.0	45.0	45.0	45.0	45.0	45.0	45.0	45.0	45.0	45.0
	14	45.0	45.0	45.0	45.0	45.0	45.0	45.0	45.0	45.0	45.0	45.0
	17	39.1	38.9	38.7	38.5	38.3	38.1	38.0	37.7	37.5	37.2	37.0
	20	32.0	31.8	31.7	31.5	31.4	31.2	31.1	30.9	30.7	30.5	30.4
	23	25.2	25.0	25.0	24.8	24.7	24.6	24.5	24.3	24.2	24.1	24.0
26	20.5	20.4	20.4	20.2	20.2	20.1	20.0	19.9	19.8	19.7	19.6	

		Main boom [m]										
		53	56	59	62	65	68	71	74	77	80	83
Jib length [m]	11	45.0	45.0	45.0	45.0	45.0	45.0	45.0	45.0	45.0	45.0	45.0
	14	45.0	45.0	45.0	45.0	45.0	45.0	45.0	45.0	43.6	41.8	42.1
	17	36.7	36.5	36.1	35.9	35.5	35.2	34.8	34.5	34.0	33.6	
	20	30.2	30.0	29.8	29.6	29.3	29.1	28.8	28.6	28.3	28.0	
	23	23.8	23.6	23.4	23.3	23.1	23.0	22.7	22.6	22.3	22.1	
26	19.5	19.4	19.3	19.2	19.0	18.9	18.8	18.6	18.4	18.3		

Example: To achieve a maximum load capacity of 25 t, a combination of 26 m main boom with 23 m jib length can be selected.

### Maximum pulley height in [m]

		Main boom [m]										
		20	23	26	29	32	35	38	41	44	47	50
Jib length [m]	11	33.6	36.6	39.6	42.6	45.6	48.6	51.6	54.6	57.6	60.6	63.6
	14	36.4	39.4	42.4	45.4	48.4	51.4	54.4	57.4	60.4	63.4	66.4
	17	39.2	42.2	45.2	48.2	51.2	54.2	57.2	60.2	63.2	66.2	69.2
	20	42.0	45.0	48.0	51.0	54.0	57.0	60.0	62.9	65.9	68.9	71.9
	23	44.7	47.7	50.7	53.7	56.7	59.7	62.7	65.7	68.7	71.7	74.7
26	47.5	50.5	53.5	56.5	59.5	62.5	65.5	68.5	71.5	74.5	77.5	

		Main boom [m]										
		53	56	59	62	65	68	71	74	77	80	83
Jib length [m]	11	66.6	69.6	72.6	75.6	78.6	81.6	84.6	87.6	90.6	93.6	96.6
	14	69.4	72.4	75.4	78.4	81.4	84.4	87.4	90.4	93.4	96.4	99.4
	17	72.2	75.2	78.2	81.2	84.2	87.2	90.2	93.2	96.2	99.1	
	20	74.9	77.9	80.9	83.9	86.9	89.9	92.9	95.9	98.9	101.9	
	23	77.7	80.7	83.7	86.7	89.7	92.7	95.7	98.7	101.7	104.7	
26	80.5	83.5	86.5	89.5	92.5	95.5	98.5	101.5	104.5	107.5		



**Crane Planner 2.0**



# Load capacities with fixed jib

## Load capacity in [t] with 20 m main boom

	Jib length 11 m		Jib length 14 m		Jib length 17 m		Jib length 23 m		Jib length 26 m	
	15 °	30 °	15 °	30 °	15 °	30 °	15 °	30 °	15 °	30 °
5.9	45.0									
7	45.0		45.0							
9	45.0	39.4	45.0		37.6					
11	45.0	35.0	42.4	28.8	34.4		24.7			
13	44.2	31.1	38.9	25.7	31.2	21.3	22.8		19.6	
16	40.7	28.5	32.0	22.3	27.4	18.6	20.5	14.5	17.5	
20	32.8	24.1	27.2	19.0	22.8	16.0	17.5	12.4	15.3	11.3
24	28.6	21.2	22.8	16.8	19.1	14.5	15.0	11.0	13.6	9.9
30	23.0	18.7	18.5	15.1	15.7	12.3	12.4	9.4	11.2	8.5
32			17.5	14.7	15.2	11.8	11.7	9.0	10.6	8.0
36					13.6	11.3	10.5	8.3	9.5	7.4
42							9.3	7.8	8.4	6.7
44									8.0	6.6
46										6.5

## Load capacity in [t] with 32 m main boom

	Jib length 11 m		Jib length 14 m		Jib length 17 m		Jib length 23 m		Jib length 26 m	
	15 °	30 °	15 °	30 °	15 °	30 °	15 °	30 °	15 °	30 °
6.3	45.0									
8	45.0		45.0							
9	45.0	40.4	45.0		38.0					
11	45.0	36.8	45.0	28.1	35.3		24.7			
13	45.0	34.0	42.1	27.0	33.2	21.8	23.2		19.7	
18	43.4	29.7	34.0	22.5	28.0	18.3	19.9	14.0	16.9	
20	41.1	27.8	31.3	21.1	25.9	17.3	19.0	13.0	16.0	11.6
24	34.8	24.7	28.1	19.0	22.9	15.6	16.8	11.7	14.6	10.4
32	28.1	20.7	21.7	16.1	17.9	13.3	13.5	9.9	12.2	8.8
40	23.1	18.7	18.1	14.8	15.2	11.8	11.3	8.7	10.1	7.6
44			16.7	14.3	14.2	11.4	10.5	8.2	9.4	7.2
46					13.6	11.3	10.2	8.0	9.0	7.0
50							9.6	7.8	8.5	6.7
55									7.9	6.6

## Load capacity in [t] with 44 m main boom

	Jib length 11 m		Jib length 14 m		Jib length 17 m		Jib length 23 m		Jib length 26 m	
	15 °	30 °	15 °	30 °	15 °	30 °	15 °	30 °	15 °	30 °
6.7	45.0									
8	45.0		45.0							
10	45.0	39.4	45.0		36.6					
12	45.0	36.7	45.0	28.7	34.4		24.0			
14	45.0	34.5	43.5	26.9	32.6	21.3	22.7		19.1	
20	41.8	30.1	35.4	22.6	28.1	18.1	19.4	13.3	16.4	11.7
26	36.9	26.1	30.1	19.6	24.0	16.0	17.0	11.7	14.5	10.4
32	32.6	23.2	25.5	17.6	20.5	14.8	15.2	10.5	13.4	9.3
38	29.2	21.0	22.1	16.2	18.0	13.2	13.3	9.6	11.8	8.5
44	25.6	19.5	19.6	15.2	16.1	12.3	11.9	8.9	10.6	7.7
50	20.9	18.7	17.8	14.7	15.0	11.6	10.8	8.3	9.6	7.2
55				14.2	13.8	11.3	10.1	8.0	8.9	6.9
60							9.5	7.8	8.4	6.7
65									7.9	6.6

Carbody counterweight: 57.2 t with 1200 mm flat track pads

Rear counterweight:

114.0 t

124.0 t

TLT 14168025 / 0. Above load charts are for reference only. For actual lift duty please refer to load chart in operator's cabin or manual. Otherwise we recommend you to plan your lifting job using Crane Planner 2.0.

# Load capacities with fixed jib

## Load capacity in [t] with 56 m main boom

	Jib length 11 m		Jib length 14 m		Jib length 17 m		Jib length 23 m		Jib length 26 m	
	15 °	30 °	15 °	30 °	15 °	30 °	15 °	30 °	15 °	30 °
7.1	45.0									
10	45.0	39.8	45.0		36.4					
12	45.0	37.7	44.8	28.6	34.5		23.6			
14	44.6	35.5	44.5	27.2	32.6	21.4	22.6		19.1	
18	42.7	32.1	40.1	24.7	29.8	19.5	20.6	14.4	17.3	
20	41.6	30.6	38.2	23.5	28.5	18.8	19.7	13.7	16.6	11.9
22	40.0	30.1	36.2	22.4	27.6	18.0	18.9	13.0	16.0	11.5
30	35.2	26.4	30.1	19.4	23.7	15.7	16.6	11.4	14.2	10.0
38	30.5	22.9	25.0	17.3	20.0	14.3	14.6	10.2	12.9	8.9
46	22.6	20.7	21.4	15.8	17.5	12.9	12.7	9.2	11.2	8.0
60	14.0	14.1	14.4	14.2	14.4	11.5	10.5	8.1	9.2	7.0
65			12.2	12.3	12.6	11.3	10.0	7.9	8.7	6.8
70							9.5	7.8	8.3	6.6
75									7.9	6.6

## Load capacity in [t] with 68 m main boom

	Jib length 11 m		Jib length 14 m		Jib length 17 m		Jib length 23 m		Jib length 26 m	
	15 °	30 °	15 °	30 °	15 °	30 °	15 °	30 °	15 °	30 °
7.5	45.0									
10	45.0		45.0		35.2					
12	45.0	38.2	44.9	27.7	33.9					
14	45.0	36.5	42.3	27.6	32.4	21.3	22.3		18.9	
18	41.3	33.4	38.4	25.2	29.8	19.9	20.4	14.4	17.3	
20	39.3	31.9	36.5	24.4	28.6	19.2	19.7	13.9	16.6	12.0
24	37.0	30.1	33.8	22.5	26.8	18.0	18.5	12.8	15.6	11.2
34	32.4	26.3	30.1	19.4	23.4	15.6	16.3	11.2	13.9	9.7
42	24.8	23.1	24.2	17.6	20.5	14.5	14.7	10.2	12.9	8.8
50	18.3	18.7	18.7	16.1	17.9	13.1	13.0	9.3	11.4	8.1
70	8.6	8.8	9.0	9.2	9.4	9.7	10.1	8.0	9.0	6.9
75			7.4	7.5	7.8	8.0	8.5	7.7	8.4	6.7
80							7.0	7.2	7.3	6.6
85								5.8	6.0	6.2

## Load capacity in [t] with 80 m main boom

	Jib length 11 m		Jib length 14 m		Jib length 17 m		Jib length 23 m		Jib length 26 m	
	15 °	30 °	15 °	30 °	15 °	30 °	15 °	30 °	15 °	30 °
8	45.0									
11	44.9	38.0	41.1		33.6					
13	43.4	36.9	39.8	28.2	32.3		22.1			
16	40.6	34.9	37.2	26.8	30.4	20.8	21.0		17.8	
20	37.0	32.5	34.6	24.8	28.3	19.4	19.4	13.9	16.4	11.9
22	35.4	31.3	33.4	24.1	27.4	18.8	18.8	13.4	15.8	11.6
30	30.9	28.5	29.5	21.3	24.9	16.9	17.2	12.0	14.4	10.4
38	26.6	26.2	26.5	19.1	22.8	15.3	15.8	10.9	13.5	9.5
46	19.7	19.7	20.0	17.2	19.0	14.4	14.6	10.0	12.7	8.7
60	11.2	11.6	11.6	12.2	12.1	12.0	12.2	8.9	10.6	7.7
80	4.3	4.4	4.6	4.8	5.0	5.2	5.7	6.1	6.0	6.4
85			3.4	3.5	3.8	3.9	4.4	4.7	4.7	5.1
90							3.3	3.5	3.6	3.8
95								2.3	2.5	2.7

Carbody counterweight: 57.2 t with 1200 mm flat track pads

Rear counterweight:

114.0 t

124.0 t

TLT 14168025 / 0. Above load charts are for reference only. For actual lift duty please refer to load chart in operator's cabin or manual. Otherwise we recommend you to plan your lifting job using Crane Planner 2.0.



Download datasheet



Please contact us.

Liebherr-Werk Nenzing GmbH · Dr. Hans Liebherr Str. 1 · 6710 Nenzing, Austria  
Phone +43 50809 41-473 · crawler.crane@liebherr.com · www.liebherr.com  
facebook.com/LiebherrConstruction