

EN

Derrick for 400 t crane

LR 1007.02.08

www.liebherr.com

LIEBHERR

Crawler cranes



PRELIMINARY

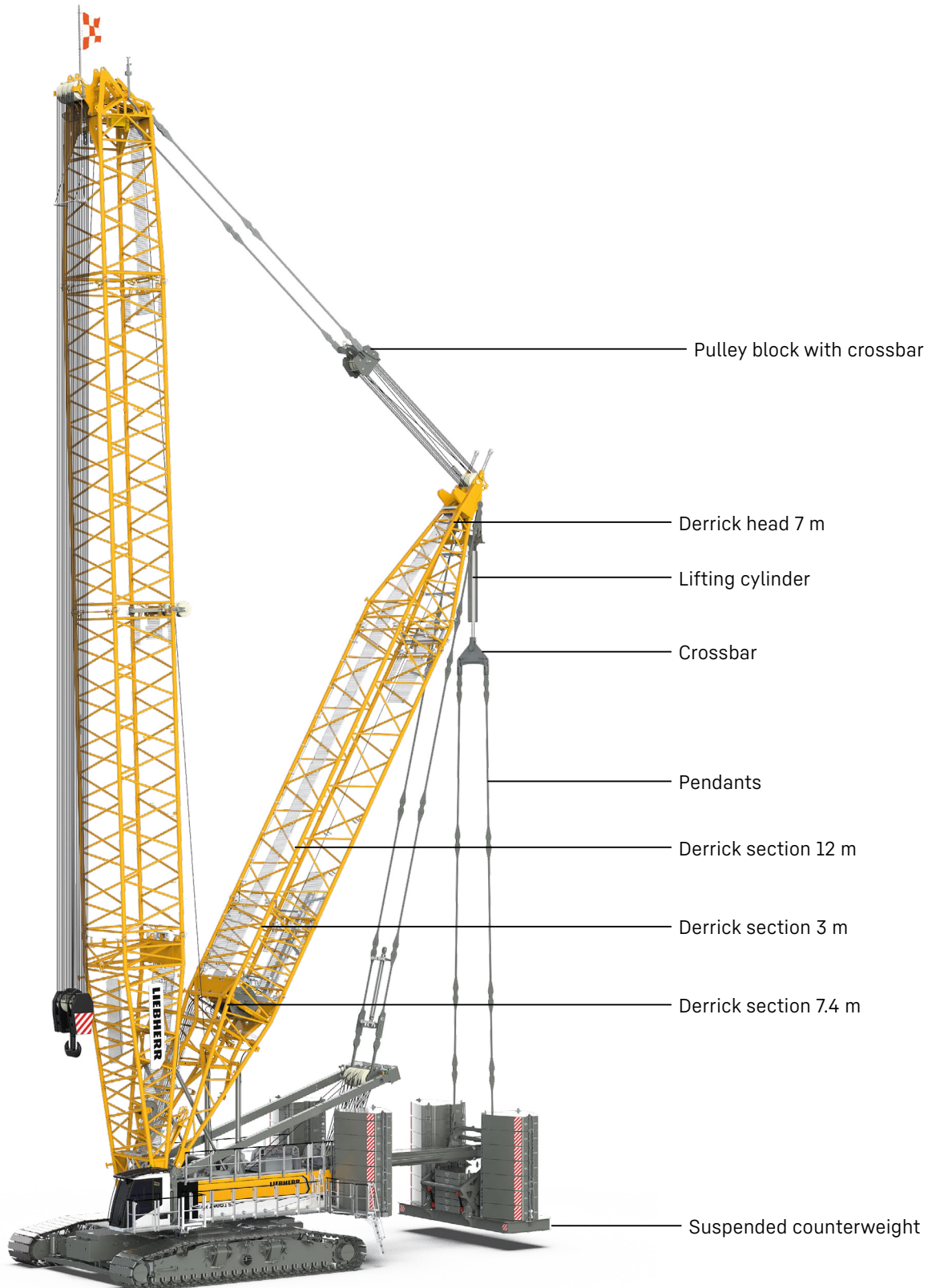
Concept and characteristics	3
Dimensions	7
Transport dimensions and weights	8
Boom combinations	10

Remarks

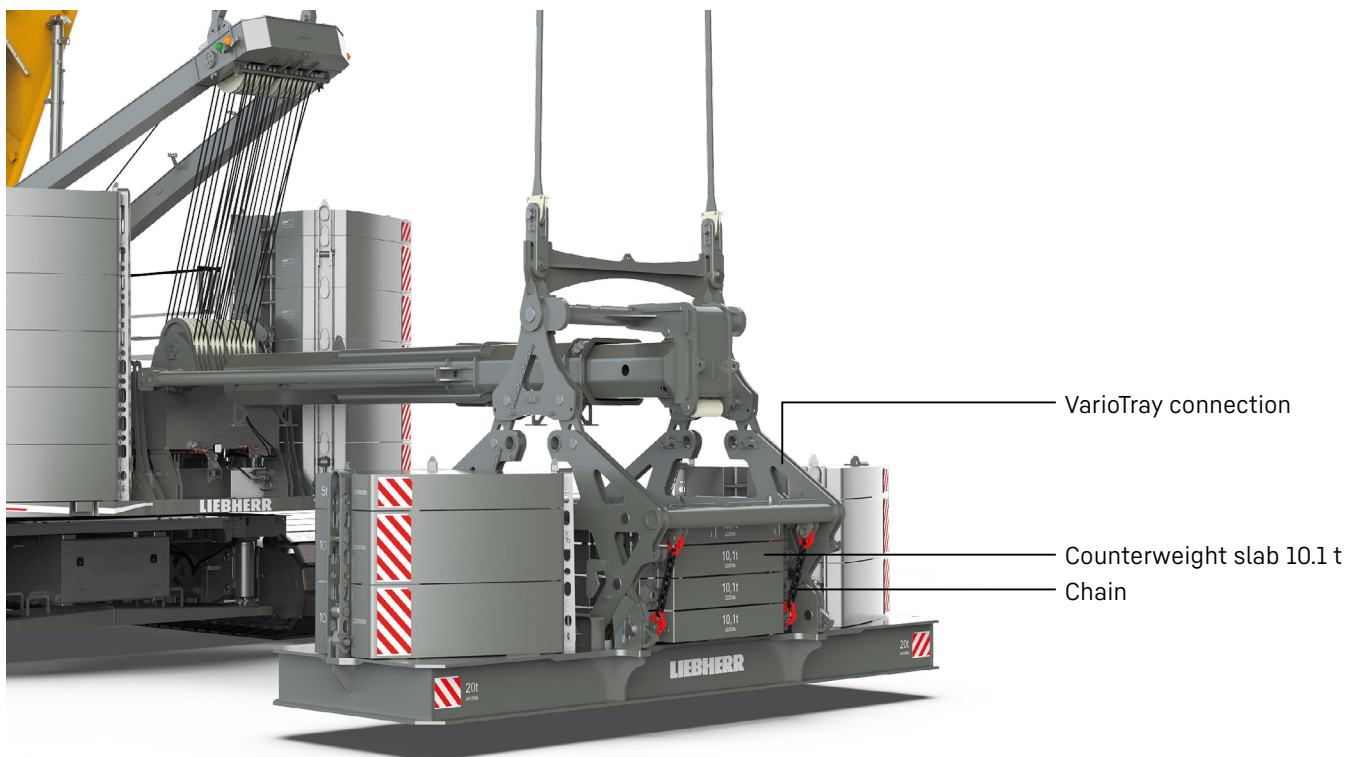
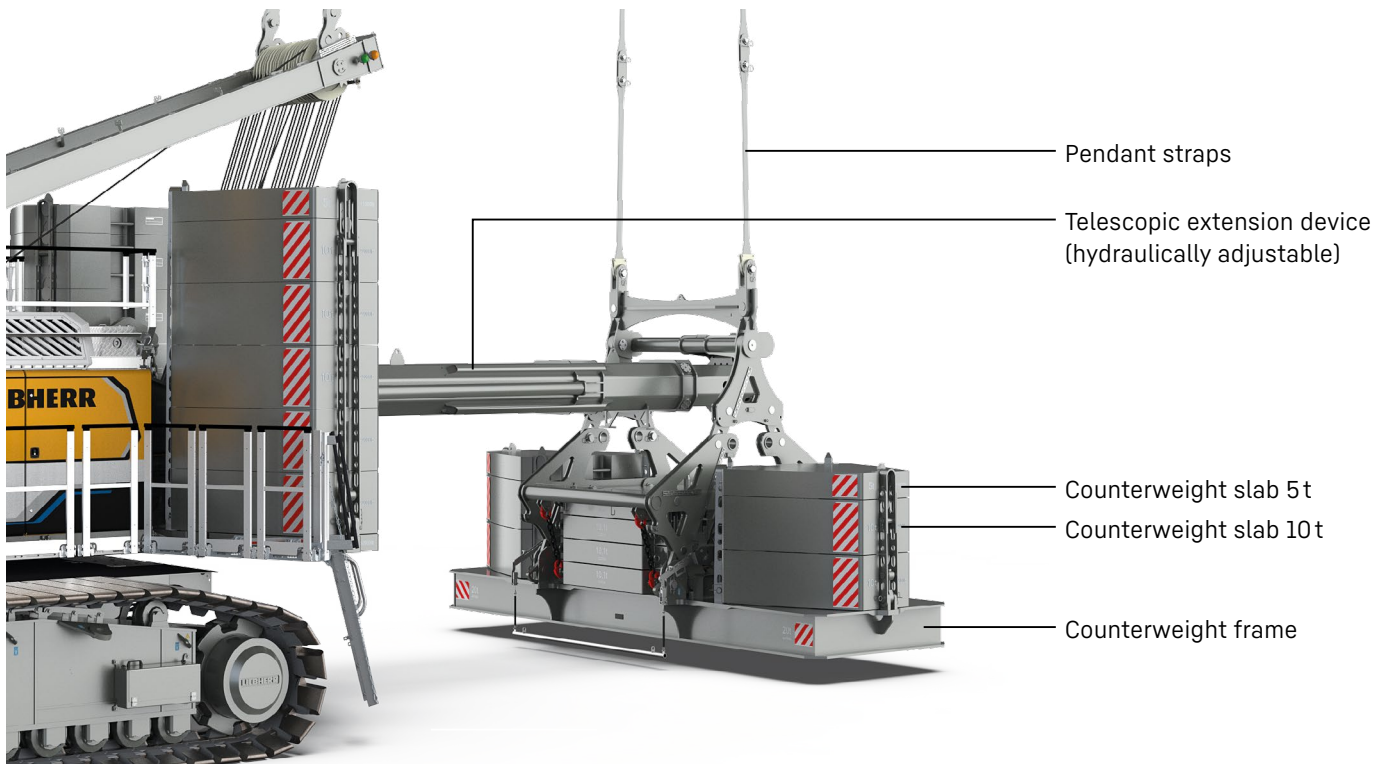
- The lifting capacities stated are valid for lifting operation only (corresponding with crane classification according to ISO 4301-1, crane group A1).
- Machine is standing on firm, horizontal ground.
- The weight of the lifting device (pulley block, hoist ropes, shackles etc.) must be deducted from the load capacity.
- Additional equipment on boom (e.g. walkways) must be deducted from the lifting capacity.
- The max. admissible wind speed can be preselected in the LML software and referred to in the load chart.
- Working radii are measured from centre of swing and under load.
- The lifting capacities are valid for 360 degrees of swing.
- Calculation of stability under load was carried out according to ISO 4305 Table 1 + 2 + 3, tipping angle 4°, as well as ANSI/ASME B 30.5 and was tested according to SAE J765 and SAE J987.
- The steel structures are calculated according to EN 13001-1; EN 13001-2.
- The last digits of the given dimensions are rounded to 0 and 5 and may differ from the actual dimensions.
- Weights may vary depending on the delivered configuration of the machine filling level of the tanks as well as generally valid tolerances.
- The figures in this brochure may include options which are not within the standard scope of supply of the machine.
- Subject to technical change without notice.

Concept and characteristics

Derrick equipment with suspended counterweight

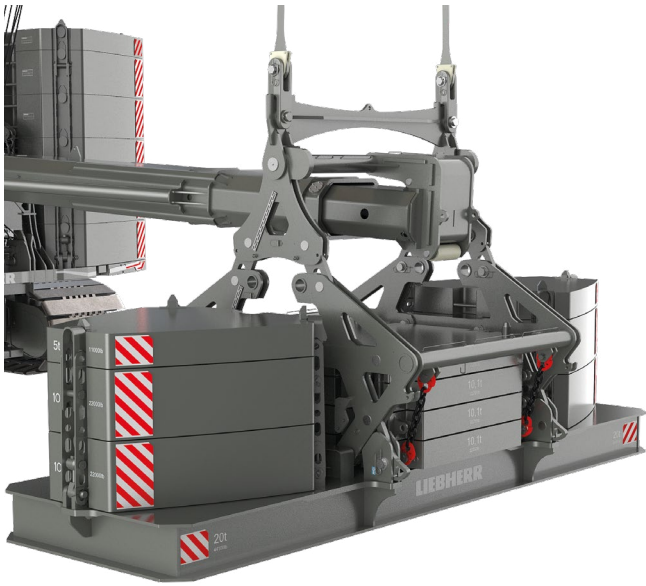


Suspended counterweight

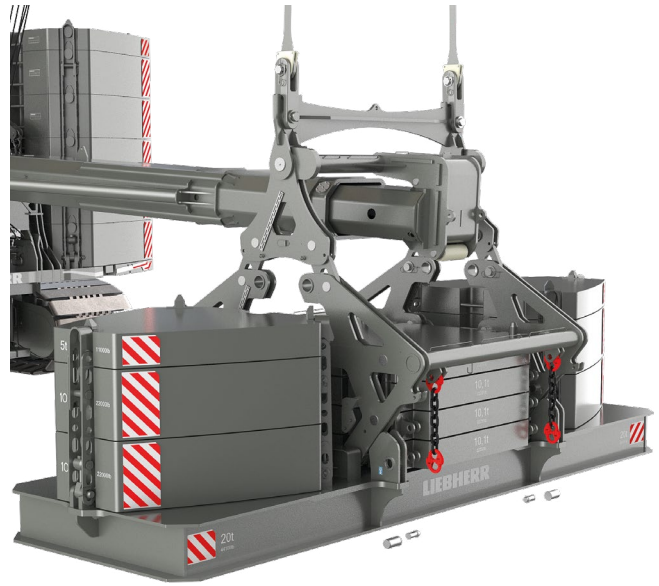


Exemplifying illustration

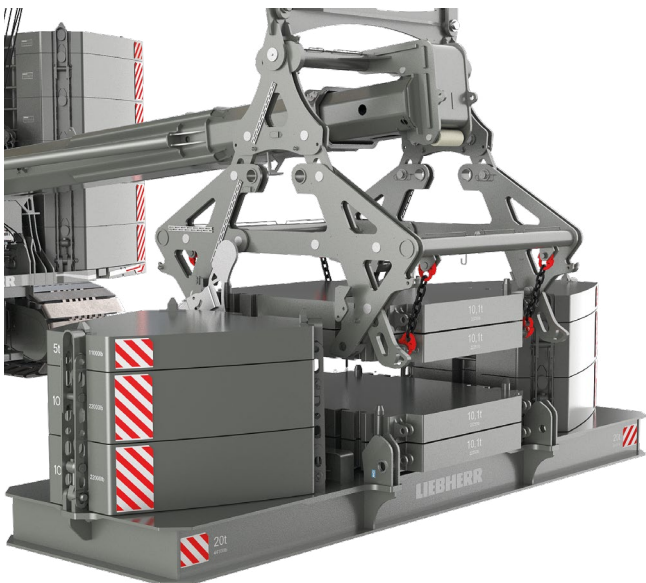
How VarioTray works



Suspended counterweight is positioned on the ground.



Unbolting of the VarioTray connection and the 10.1-t counterweight slabs.



Counterweights required for the lift are bolted to the VarioTray connection. No auxiliary crane is required to change the 10.1-t counterweights.

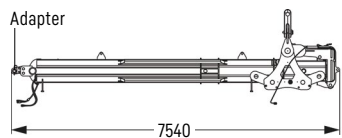
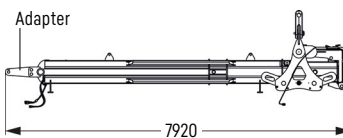
Exemplifying illustration

Overview and conversion options

Overview derrick for 300 t crane / 400 t crane

	300 t crane	400 t crane
Standard connection	✓	-
VarioTray connection	✓	✓

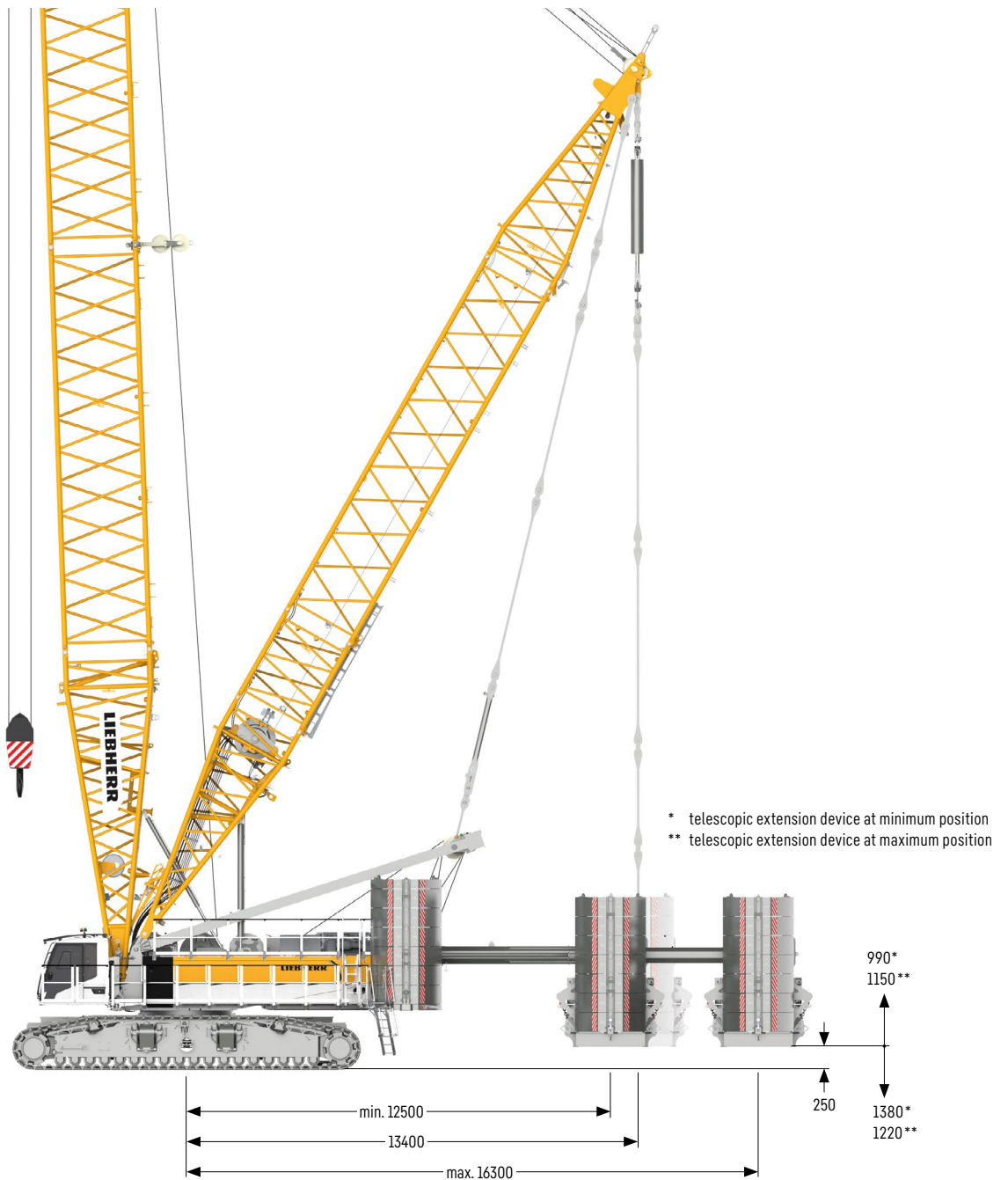
Derrick conversion option for 300 t crane / 400 t crane

	300 t crane	400 t crane
Telescopic extension device	 <p>Adapter</p> <p>7540</p>	 <p>Adapter</p> <p>7920</p>

By using the correct adapter, the extension device can be used for both the 300 t and the 400 t crane.

Dimensions

Derrick equipment with suspended counterweight

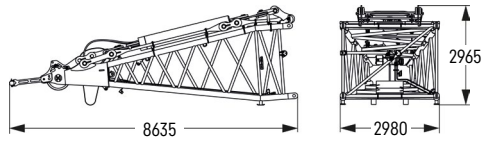


Telescopic extension device (hydraulic)

The hydraulic extension device is continuously adjustable from 12.5 to 16.3 m.

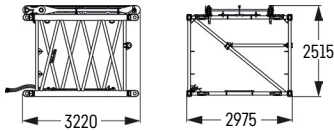
Transport dimensions and weights

Derrick equipment 2821.xx



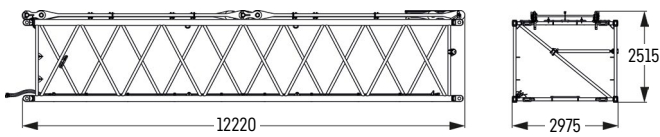
Derrick head 7 m (No. 2821.30)

Weight including lifting cylinder with crossbar, including pulley block with crossbar	kg 7190
---	---------



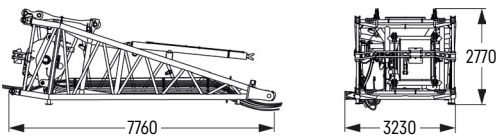
Derrick section 3 m (No. 2821.30)

Weight incl. pendant straps	kg 1446
-----------------------------	---------



Derrick section 12 m (No. 2821.30)

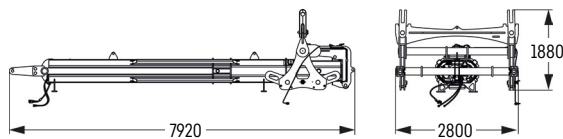
Weight incl. pendant straps	kg 4150
-----------------------------	---------



Derrick foot 7.4 m (No. 2821.32)

Weight including rope	kg 10700
-----------------------	----------

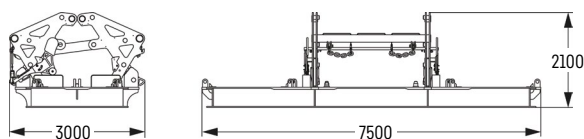
Telescopic extension device



Telescopic extension device

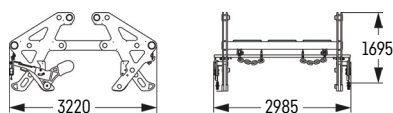
Weight	kg 6141
--------	---------

VarioTray connection transport options



VarioTray connection with counterweight frame

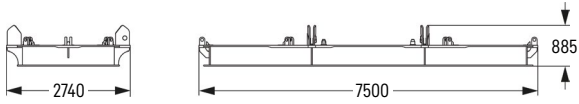
Weight	kg 22626
--------	----------



VarioTray connection

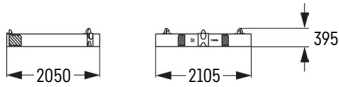
Weight	kg 2626
--------	---------

Counterweight



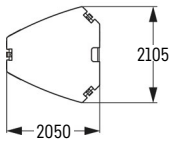
Counterweight frame

Weight	kg 20000
--------	----------



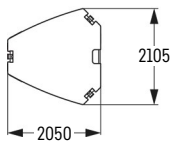
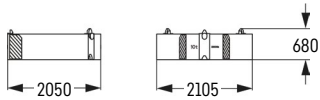
Counterweight slab

0x	kg 5000
----	---------



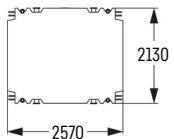
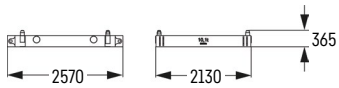
Counterweight slab

14x	kg 10000
-----	----------

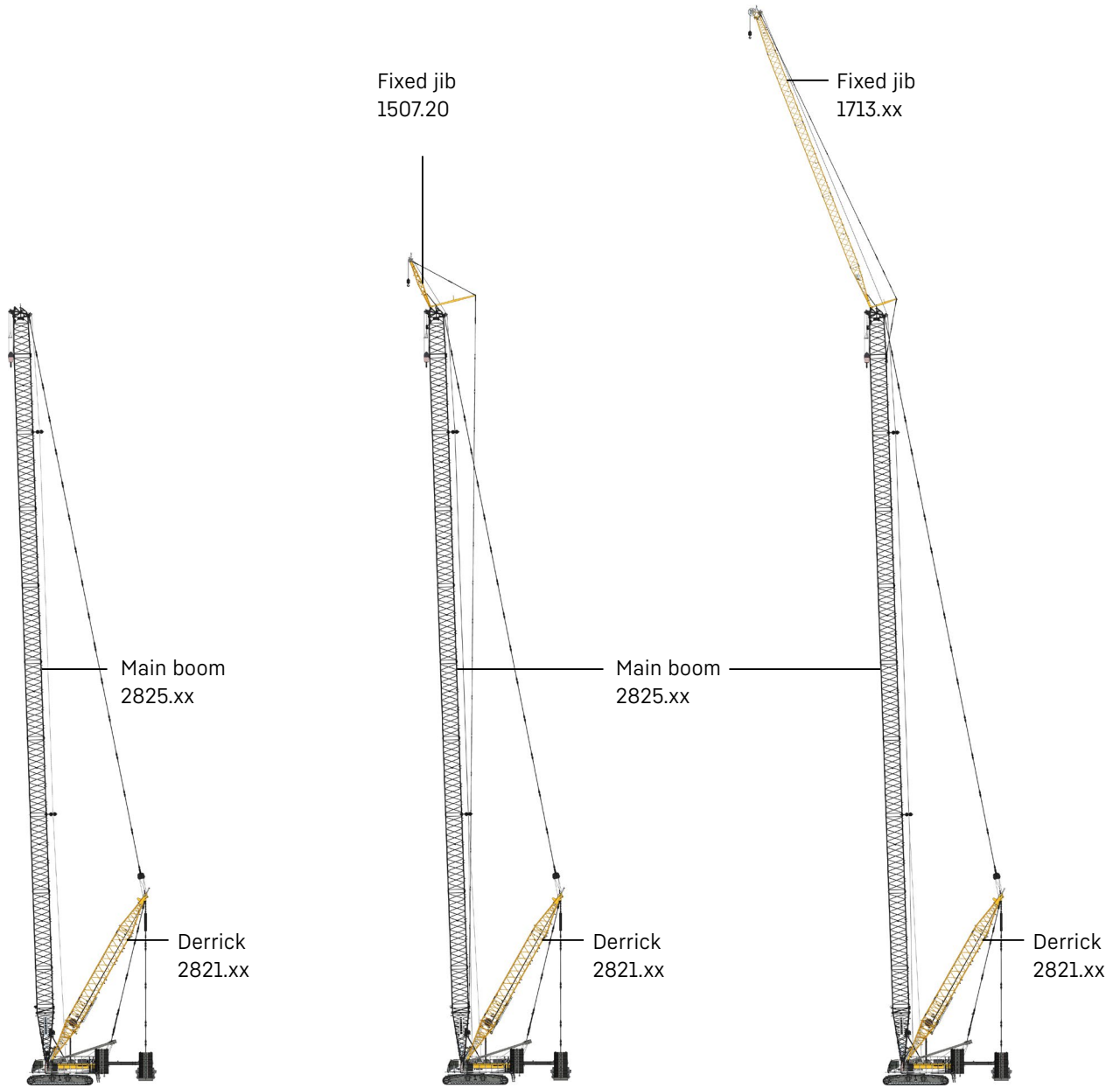


Counterweight slab for optional VarioTray connection

6x	kg 10100
----	----------



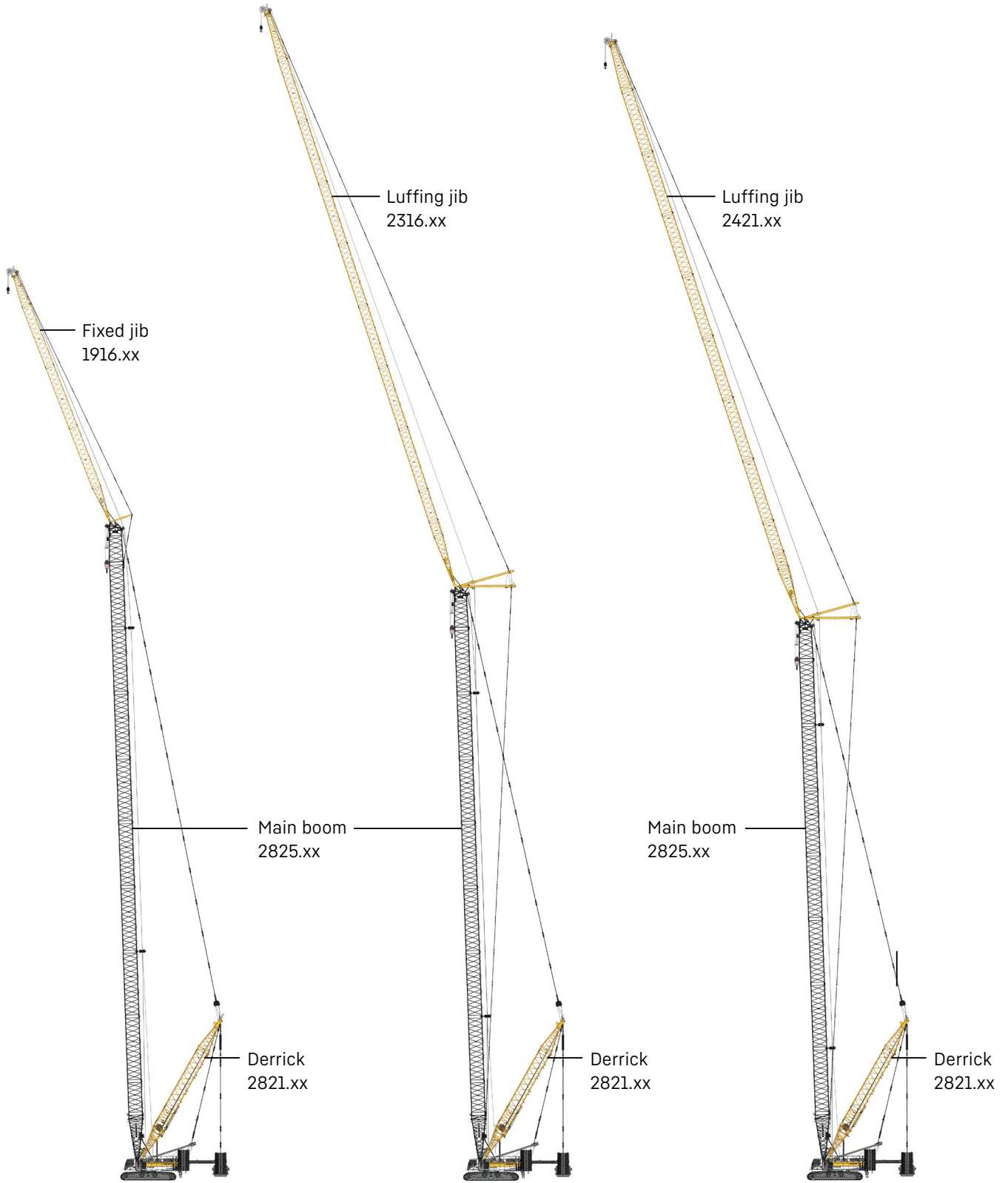
Boom combinations



Main boom	
Mode 6	
Max. length	
2825.xx	m 119

Main boom + fixed jib	
Mode 8	
Max. combination	
2825.xx	m 119
1507.20	m 8
Total length	m 127

Main boom + fixed jib	
Mode 8	
Max. combination	
2825.xx	m 119
1713.xx	m 14
Total length	m 154



Main boom + fixed jib

Mode 8	
Max. combination	
2825.xx	m 119
1916.xx	m 50
Total length	m 169

Main boom + luffing jib

Mode 9		
Max. combination		
2825.xx	m 107	119
2316.xx	m 113	41
Total length	m 220	160

Main boom + luffing jib

Mode 9		
Max. combination		
2825.xx	m 101	113
2421.xx	m 110	68
Total length	m 211	181



Download datasheet



Please contact us.

Liebherr-Werk Nenzing GmbH · Dr. Hans Liebherr Str. 1 · 6710 Nenzing, Austria
Phone +43 50809 41-473 · crawler.crane@liebherr.com · www.liebherr.com
facebook.com/LiebherrConstruction