

EN-US

# Derrick for 440 US t crane

LR 1007.02.08

[www.liebherr.com](http://www.liebherr.com)

## LIEBHERR

Crawler cranes



**PRELIMINARY**

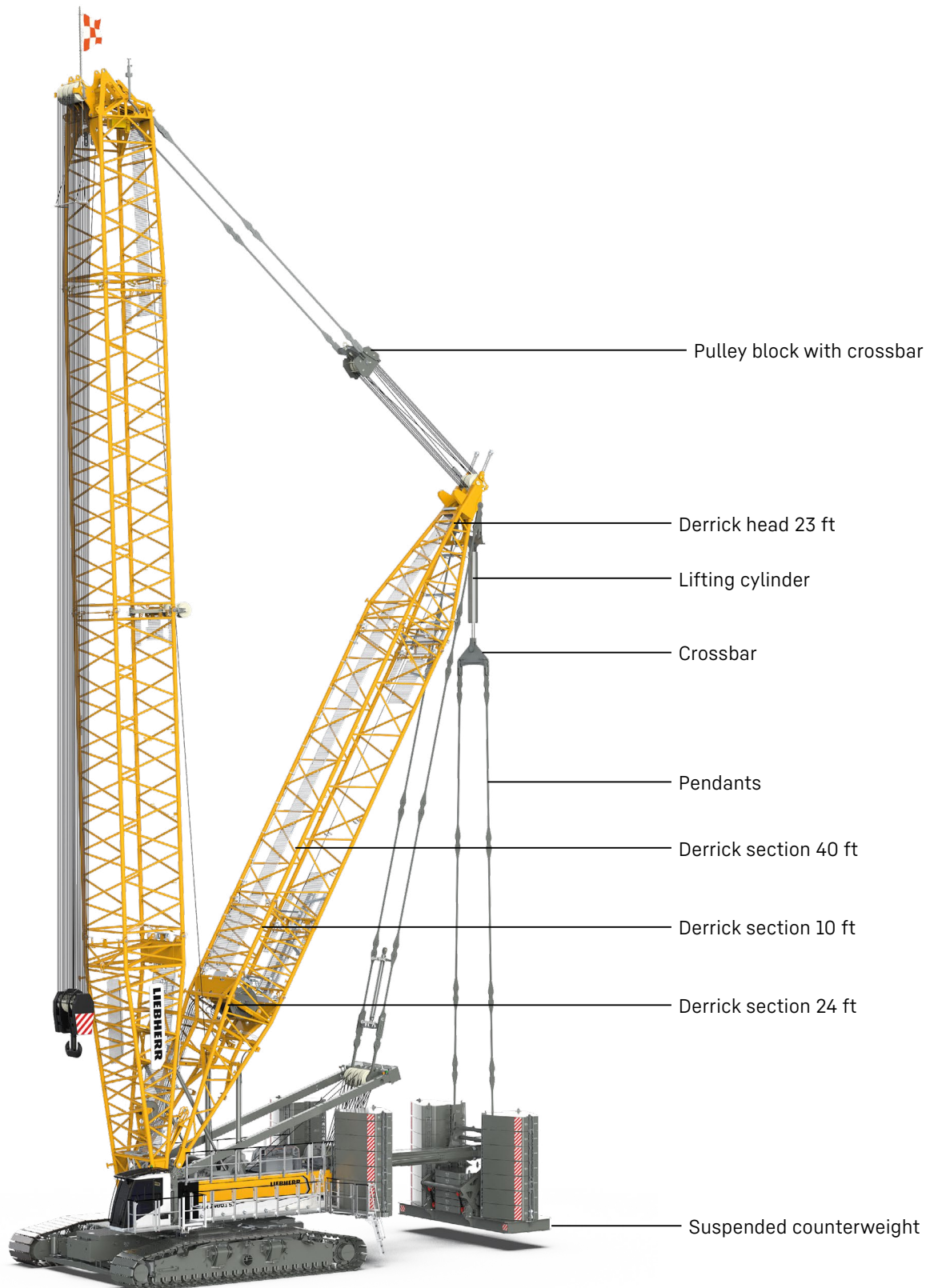
<b>Concept and characteristics</b> .....	3
<b>Dimensions</b> .....	7
<b>Transport dimensions and weights</b> .....	8
<b>Boom combinations</b> .....	10

## Remarks

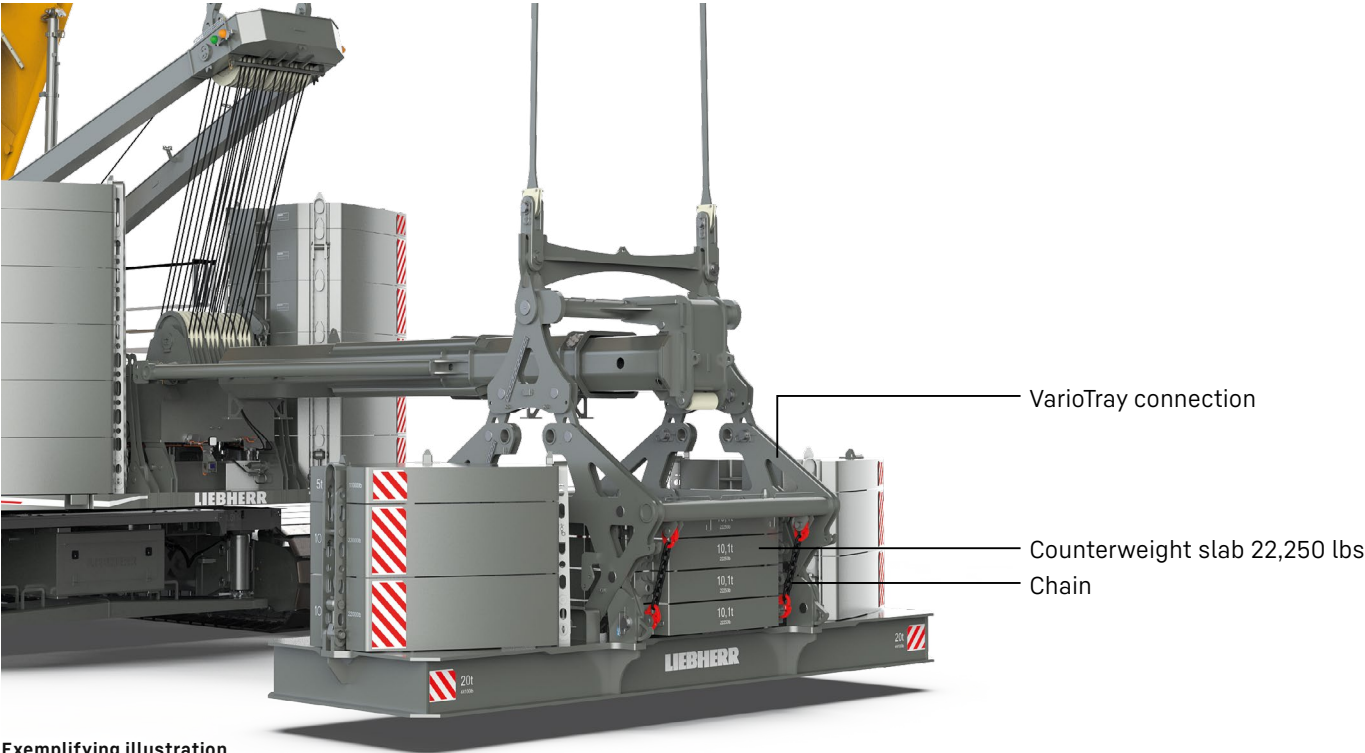
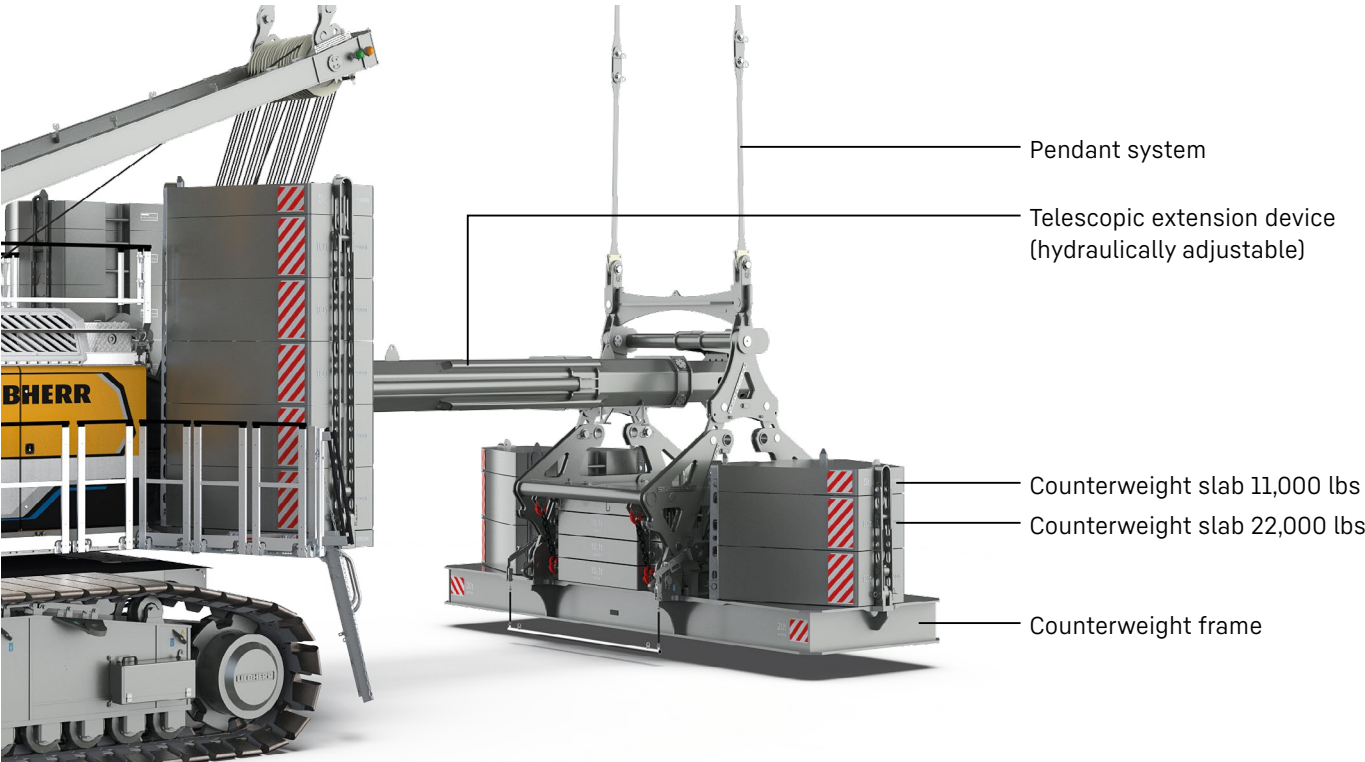
- The lifting capacities stated are valid for lifting operation only (corresponding with crane classification according to ISO 4301-1, crane group A1).
- Machine is standing on firm, horizontal ground.
- The weight of the lifting device (pulley block, hoist ropes, shackles etc.) must be deducted from the load capacity.
- Additional equipment on boom (e.g. walkways) must be deducted from the lifting capacity.
- The max. admissible wind speed can be preselected in the LML software and referred to in the load chart.
- Working radii are measured from centre of swing and under load.
- The lifting capacities are valid for 360 degrees of swing.
- Calculation of stability under load was carried out according to ISO 4305 Table 1 + 2 + 3, tipping angle 4°, as well as ANSI/ASME B 30.5 and was tested according to SAE J765 and SAE J987.
- The steel structures are calculated according to EN 13001-1; EN 13001-2.
- Weights may vary depending on the delivered configuration of the machine filling level of the tanks as well as generally valid tolerances.
- The figures in this brochure may include options which are not within the standard scope of supply of the machine.
- Subject to technical change without notice.

# Concept and characteristics

## Derrick equipment with suspended counterweight

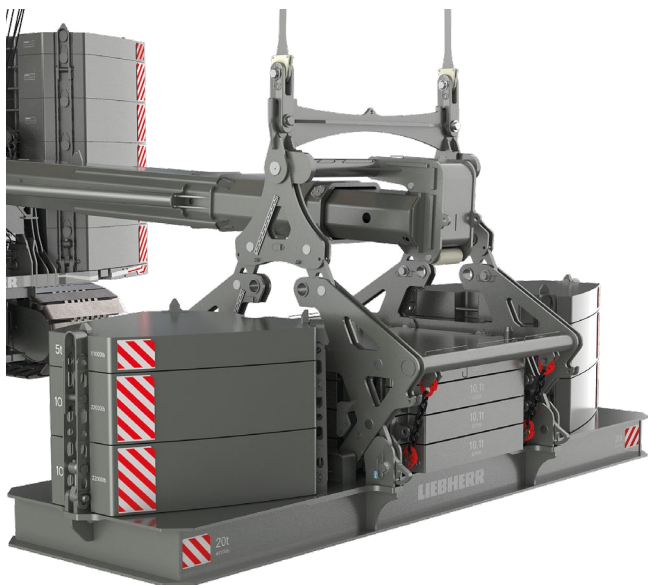


# Suspended counterweight

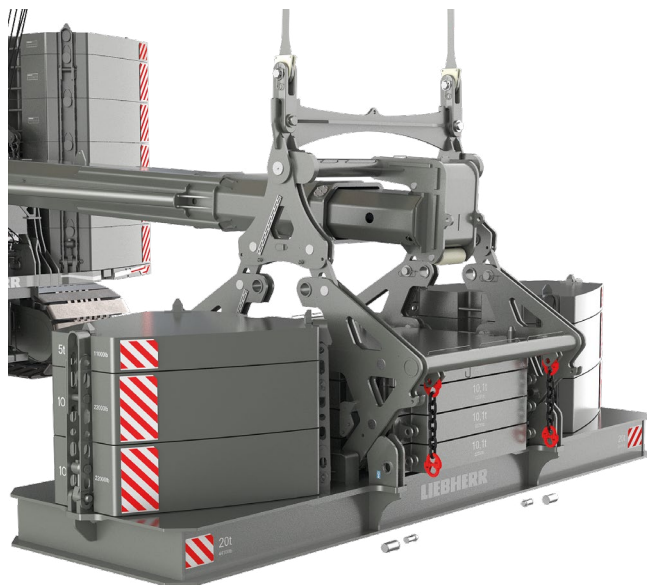


Exemplifying illustration

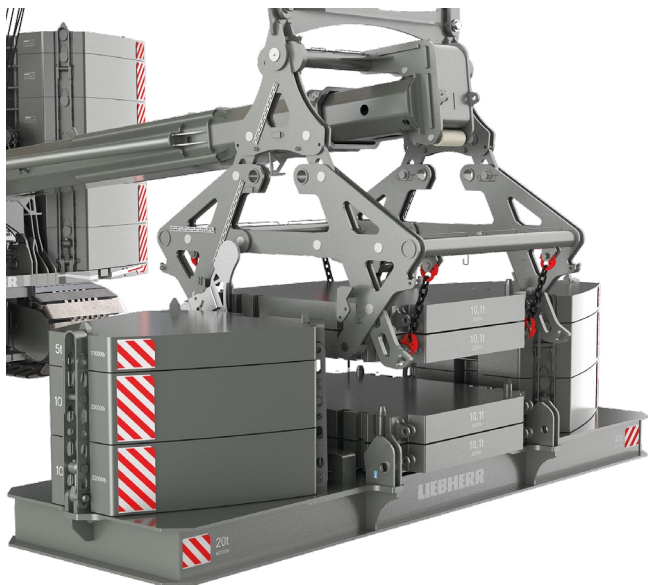
## How VarioTray works



Suspended counterweight is positioned on the ground.



Unbolting of the VarioTray connection and the 22,250-lbs counterweight slabs.



Counterweights required for the lift are bolted to the VarioTray connection. No auxiliary crane is required to change the 22,250-lbs counterweights.

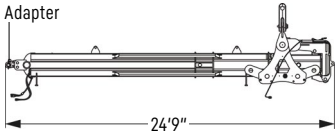
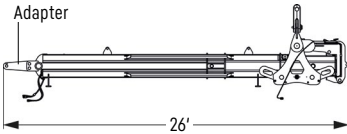
Exemplifying illustration

# Overview and conversion options

Overview derrick for 331 USt crane / 440 USt crane

	331 USt crane	440 USt crane
Standard connection	✓	-
VarioTray connection	✓	✓

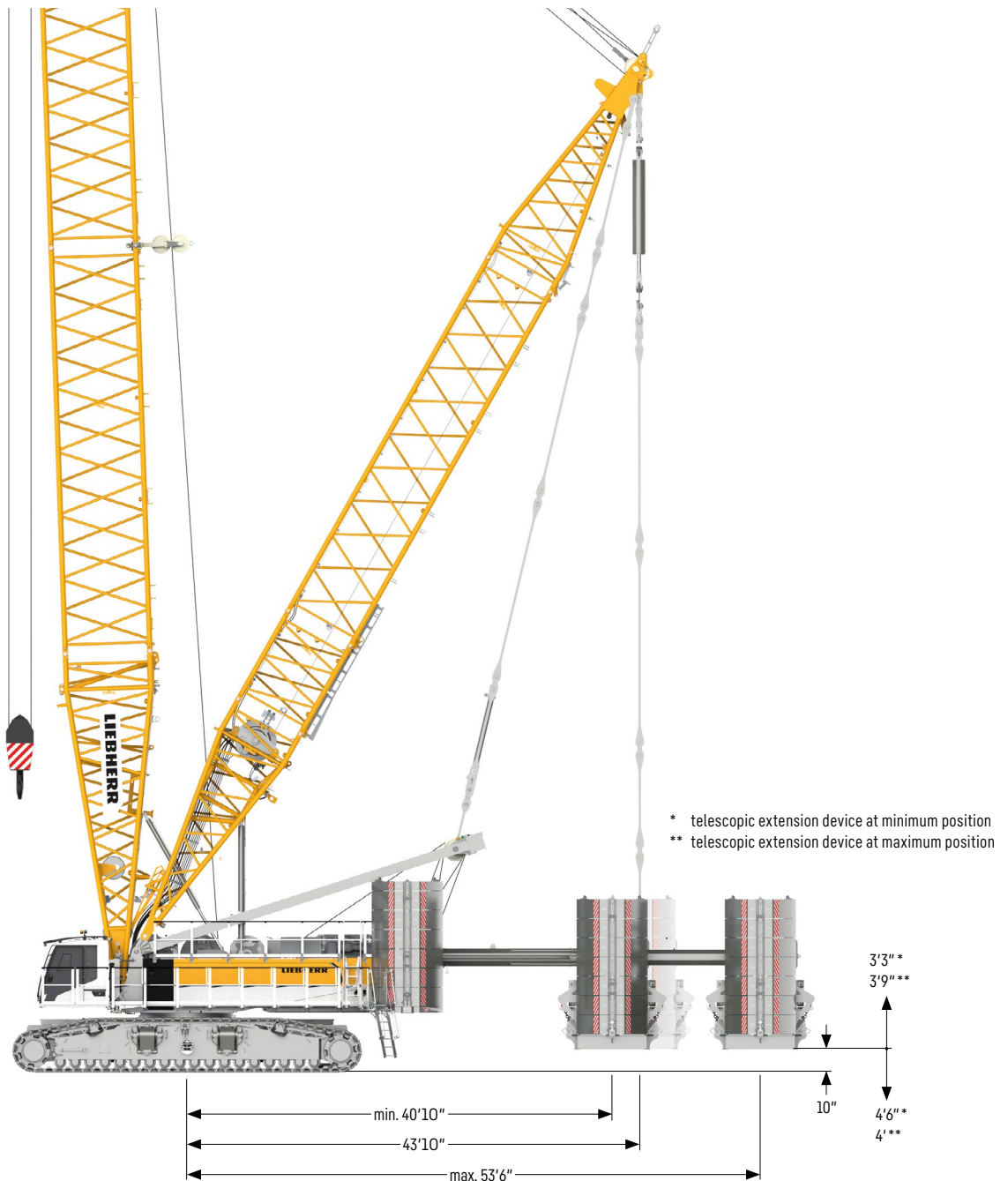
Derrick conversion option for 331 USt crane / 440 USt crane

	331 USt crane	440 USt crane
Telescopic extension device		

By using the correct adapter, the extension device can be used for both the 331 USt and the 440 USt crane.

# Dimensions

## Derrick equipment with suspended counterweight

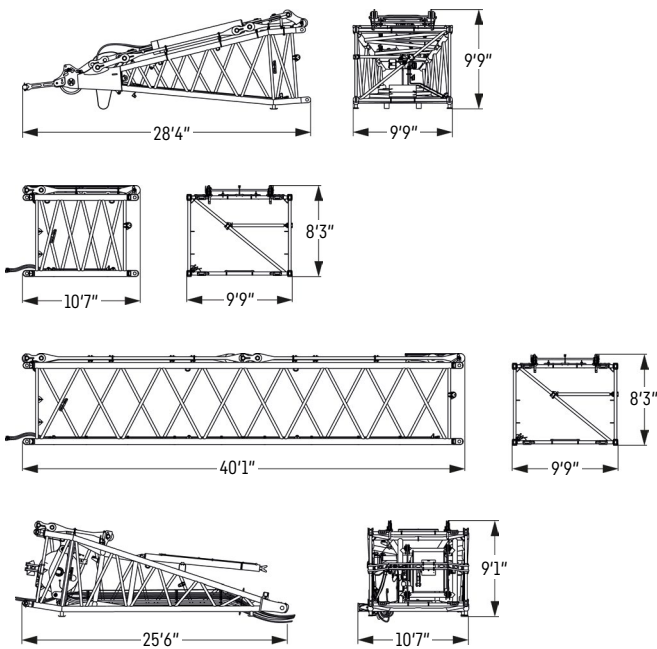


### Telescopic extension device (hydraulic)

The hydraulic extension device is continuously adjustable from 40.8 to 53.5 ft.

# Transport dimensions and weights

## Derrick equipment 2821.xx



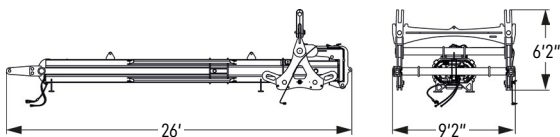
<b>Derrick head 23 ft (No. 2821.30)</b>	
Weight including lifting cylinder with crossbar, including pulley block with crossbar	lbs 15,851

<b>Derrick section 10 ft (No. 2821.30)</b>	
Weight incl. pendant straps	lbs 3,188

<b>Derrick section 40 ft (No. 2821.30)</b>	
Weight incl. pendant straps	lbs 9,149

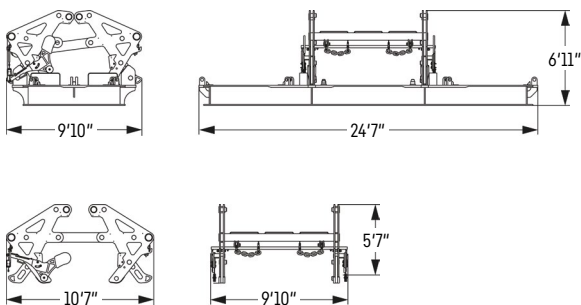
<b>Derrick foot 24 ft (No. 2821.32)</b>	
Weight including rope	lbs 23,589

## Telescopic extension device



<b>Telescopic extension device</b>	
Weight	lbs 13,539

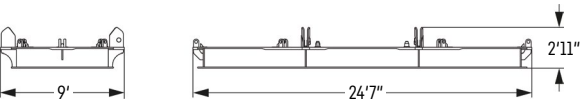
## VarioTray connection transport options



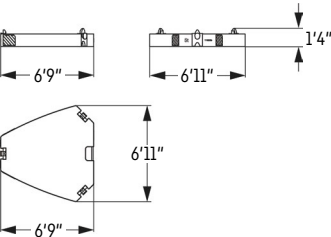
<b>VarioTray connection with counterweight frame</b>	
Weight	lbs 49,882

<b>VarioTray connection</b>	
Weight	lbs 5,789

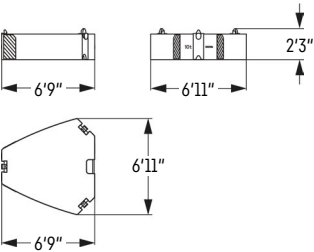
# Counterweight



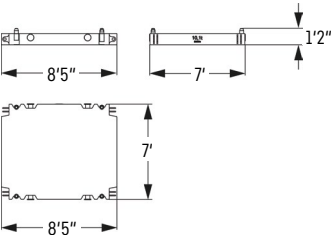
Counterweight frame	
Weight	lbs 44,100



Counterweight slab	
0x	lbs 11,000

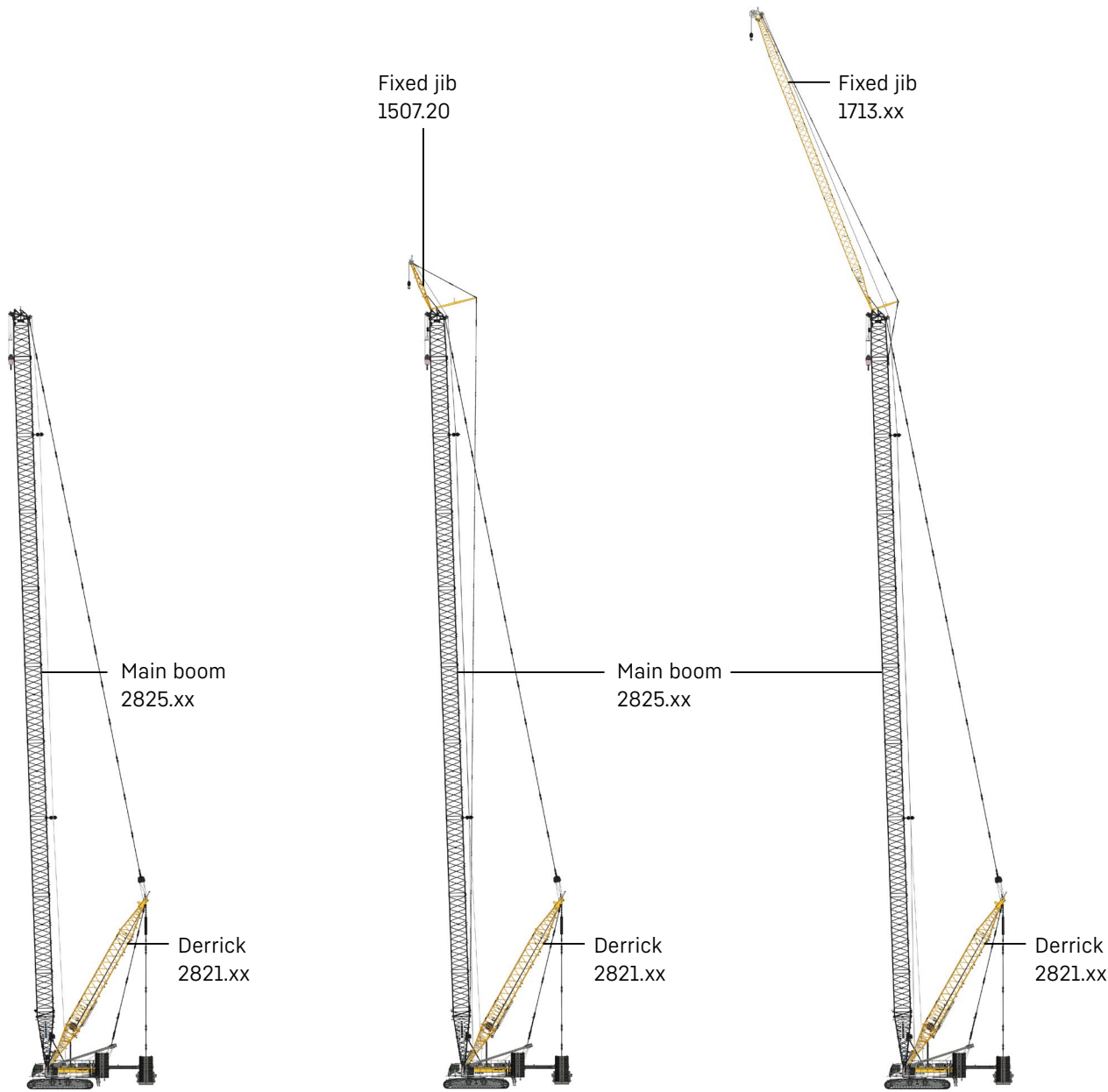


Counterweight slab	
14x	lbs 22,000



Counterweight slab for optional VarioTray connection	
6x	lbs 22,250

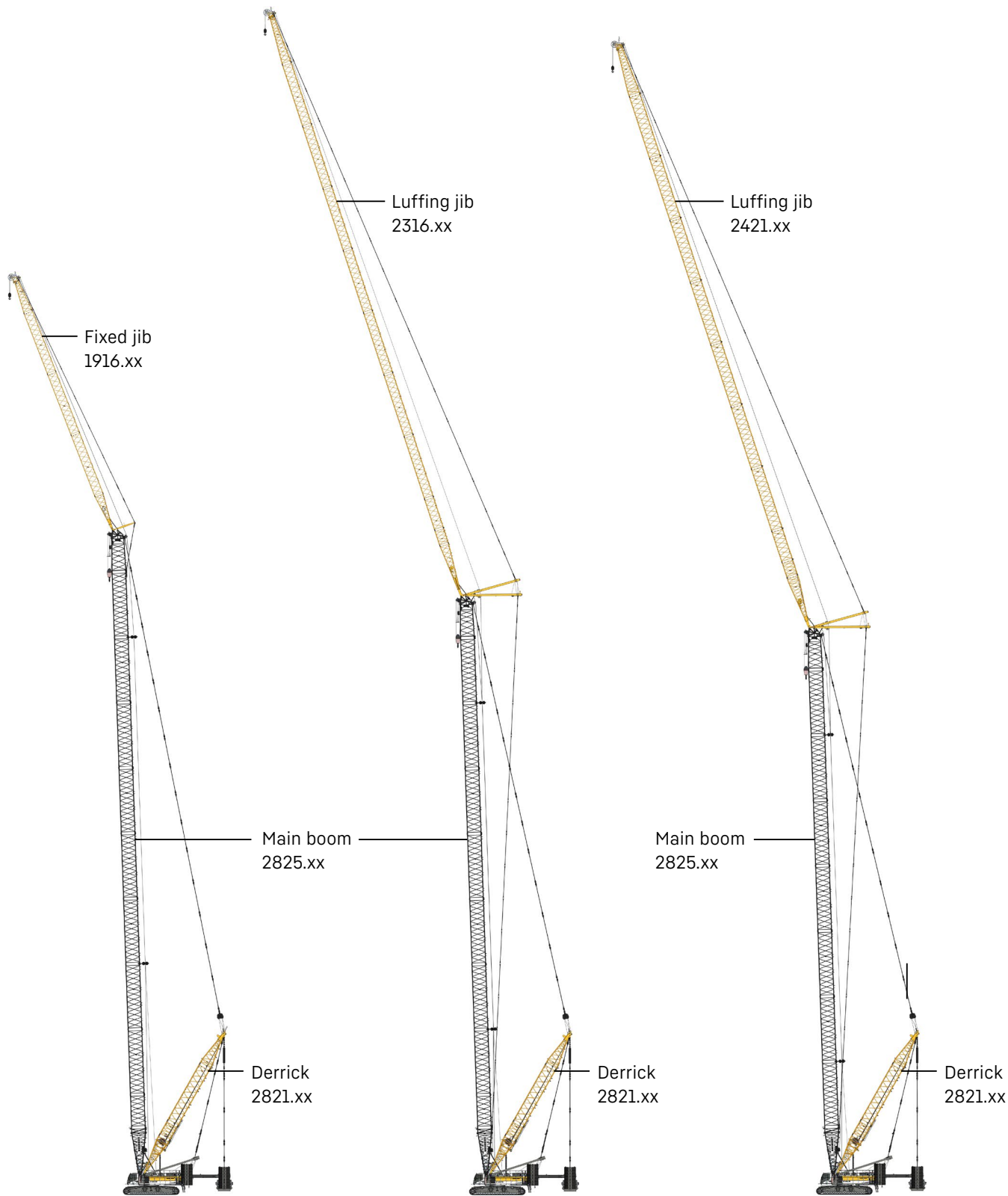
# Boom combinations



Main boom	
Mode 6	
Max. length	
2825.xx	ft 390

Main boom + fixed jib	
Mode 8	
Max. combination	
2825.xx	ft 390
1507.20	ft 26
Total length	ft 416

Main boom + fixed jib	
Mode 8	
Max. combination	
2825.xx	ft 390
1713.xx	ft 46
Total length	ft 436



#### Main boom + fixed jib

Mode 8

##### Max. combination

2825.xx	ft	390
1916.xx	ft	164
Total length	ft	554

#### Main boom + luffing jib

Mode 9

##### Max. combination

2825.xx	ft	351	390
2316.xx	ft	371	134
Total length	ft	722	524

#### Main boom + luffing jib

Mode 9

##### Max. combination

2825.xx	ft	331	371
2421.xx	ft	361	223
Total length	ft	692	594



Download datasheet



Please contact us.

Liebherr-Werk Nenzing GmbH · Dr. Hans Liebherr Str. 1 · 6710 Nenzing, Austria  
Phone +43 50809 41-473 · [crawler.crane@liebherr.com](mailto:crawler.crane@liebherr.com) · [www.liebherr.com](http://www.liebherr.com)  
[facebook.com/LiebherrConstruction](https://facebook.com/LiebherrConstruction)

Liebherr USA, Co. · 7075 Bennington Street · Houston, TX 77028-5812  
Phone (713) 636-4050 · [crawler.cranes.usa@liebherr.com](mailto:crawler.cranes.usa@liebherr.com) · [www.liebherr.com](http://www.liebherr.com)  
[facebook.com/LiebherrConstruction](https://facebook.com/LiebherrConstruction)