
Maintenance and operator training

Course catalogue 2026

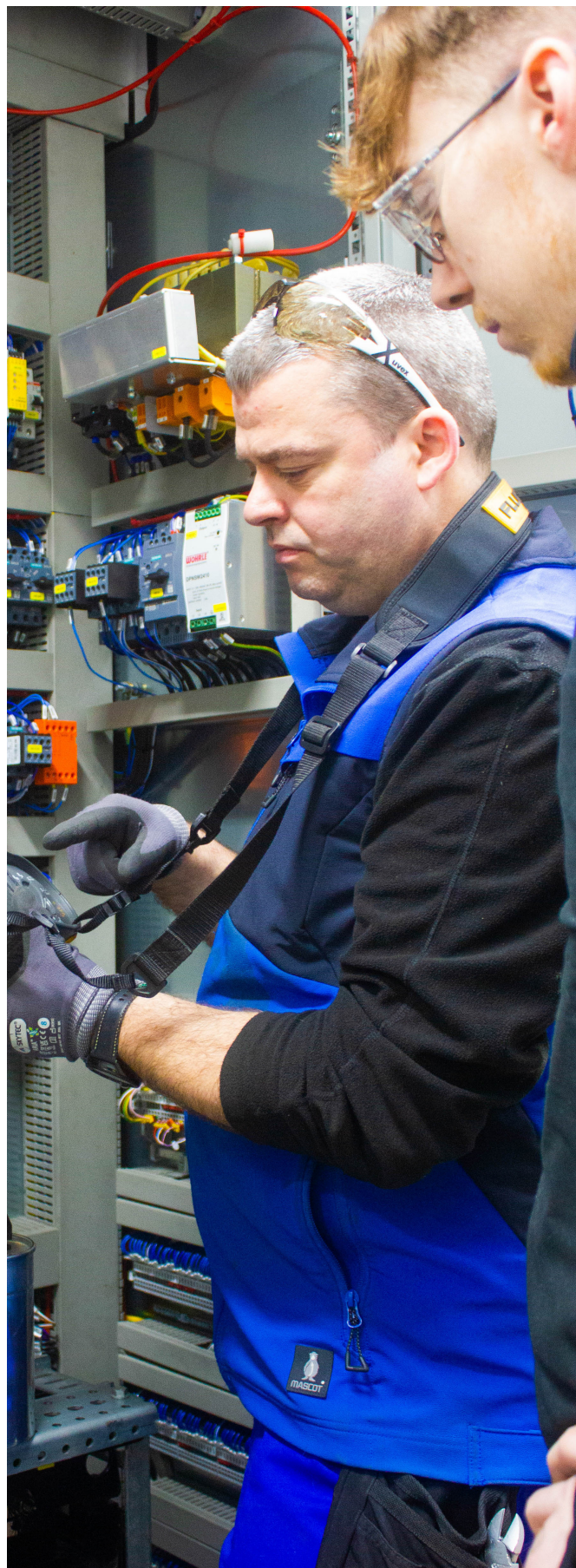
LIEBHERR

Customer Service Container Cranes



Table of contents

- 3 MCC training centre- Killarney
- 4 Training conditions
- 7 Container crane - Electrical hardware & maintenance
Container crane - Diagnostics
- 8 Container crane - Mechanical hardware and maintenance
Container crane - IT/OT hardware and maintenance
- 9 Container crane - Automation & operator assisted features
Container crane - Operator familiarisation/cabin
- 10 Container crane - Operator familiarisation/
Remote Operator Station (ROS)
Container crane - Operator familiarisation/
Remote control bellybox
- 11 Container crane - Emergency egress
Container crane - Emergency rescue





MCC training centre - Killarney

Dear Customer,

Thank you for your interest in our courses. We consider it vital to provide you with the necessary knowledge and skills to safely operate and maintain your container handling cranes from Liebherr.

Our training courses are always up to date and produced using modern techniques and procedures. You can receive your training at our factory in Killarney, your container terminal or online (some courses). Our training delivery methods can accommodate your work schedule and shift patterns.

Our instructors have many years experience in the fields of design, production, crane assembly, troubleshooting and maintenance. The courses are delivered by a blend of theoretical classroom based lectures and hands-on practical instruction. Contact us to discuss training solutions that meet your needs.

Liebherr Container Cranes Ltd. is part of the Liebherr-MCCtec GmbH division, which is one of eleven divisional parent companies of the Liebherr Group. It coordinates all business activities in the field of hydraulic rope excavators, crawler cranes and pile-driving and drilling rigs from the construction machinery sector as well as a range of maritime and container cranes.

Liebherr-MCCtec GmbH employs more than 5,000 people worldwide and has four European production sites in Nenzing (Austria), Rostock (Germany) and Sunderland (England). Along with more than 50 mixed sales and service (MSC) companies around the globe.

Contact us today to discuss tailored training solutions for your business.

Contact

Liebherr Container Cranes Ltd.
Killarney, Co. Kerry,
V93 H685 Ireland

Phone +353 64 66 70245
training.lcc@liebherr.com

www.liebherr.com
www.facebook.com/LiebherrMaritime



MCC Training

Training conditions

Training preparation

Attendees should be familiar with mechanical and electrical crane technology. A suitable training room and display should be available for the trainer at the customer's site.

Duration

Durations are outlined as per course summary. Training courses usually last from 8:30am to 4:00pm. Changes to the length and times of training courses may differ depending on previous knowledge of participants.

Language

Our training programmes are conducted in English. Other languages are also available once agreed and managed in advance.

Award

At the end of each training course every participant will receive either a confirmation of participation or a certificate.

Training conditions

Liebherr is not responsible for unfavourable weather conditions, waiting time of any kind or delays at the job site.

In case the training is conducted on the machine the following conditions apply:

- The crane is safe to work, maintained and certified.
- The surrounding of the crane is safe for operating the crane.
- The crane including its operation are insured.
- Our trainer will only operate for explanation purposes and not for loading or unloading operations.
- Access to site is granted to the trainer as required.

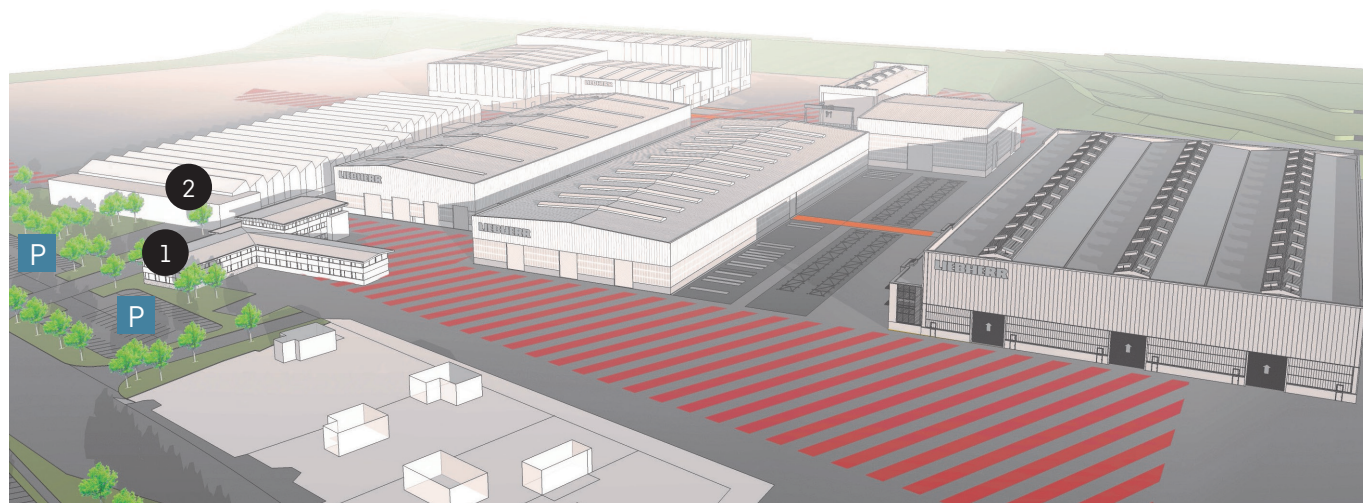
Change of date/cancellation

Any expected delays on the agreed schedule should be communicated to the training centre at the earliest convenience. In this case, a new schedule can be arranged.

There will be no cancellation costs up to two weeks prior to start date. In the case of less than two weeks' notice of cancellation, we reserve the right to invoice an expense allowance.

If a training course is cancelled due to illness of our trainer, force majeure or other unforeseeable events, there is no entitlement to the training course being held. Any fees already paid, will be refunded immediately. Further claims are excluded.

Site plan



- 1 Car access (customers/visitors)
- 2 Office building / MCC Training Centre Killarney
- P Parking lot

Directions

Coming from Kerry

Approximate drive is 20 minutes (16.9km)
via N22 from Kerry Airport to Liebherr.

Coming from Cork

Approximate drive is 1 hours and 25 minutes (93km)
via N22 from Cork Airport to Liebherr.

Coming from Dublin

Approximate drive is 3 hours and 50 minutes (305km)
via M7, N22 from Dublin Airport to Liebherr.

Our location

Liebherr Container Cranes Ltd.
Killarney, Co. Kerry
V93 H685

Hotel & airports

We gladly offer support with arranging hotel reservations, as well as daily transfers, car rentals and airport transfers.



The "The Europe Hotel & Resort" is our corporate hotel. The corporate tariff is only available for bookings made by the MCC Training Centre - Killarney.

The Europe Hotel & Resort Fossa, Killarney, Co. Kerry, Ireland
V93 KHN6
Phone + 353 64 66 71300
reservations@theeurope.com
The Europe Hotel & Resort Fossa



If you arrive by airplane, the closest airports are the following:

Kerry Airport,
Farranfore, County. Kerry Ireland
V93 KH7

Cork Airport,
County. Cork Ireland
T12 X9DD

Dublin Airport,
County. Dublin Ireland
K67 KD58

Training courses



Container crane - Electrical hardware & maintenance

Duration	3 days, 8:30am - 4:00pm
Availability	MCC Training Centre Killarney
Location	Training centre Crane site
Trainer	Experienced technical trainer from our training centre
Participants	Maintenance staff, engineers, max 8
Required equipment	<ul style="list-style-type: none">- Own PPE- Own electrical tool kit
Training targets	<ul style="list-style-type: none">- Familiar with maintenance and inspection schedules- Understanding of all major electrical components- Familiar with crane management system (CMS), including redundant features, bypass enable and error handling- Competent to operate cranes from all control stations- Understand how to engage and operate crane back-up drives if applicable- Aware of safety features and operation
Training content	<ul style="list-style-type: none">- Crane walkover detailing electrical system on Liebherr container crane- Maintenance and inspection schedule- Reading and understand electrical schematics incl. switchgear panel layout- Main system components: MV electrical/ diesel generator- Control system architecture and network topology- Handling crane management system (CMS), incl. bypass features and error diagnostics
Attestation	After successful completion a certificate of participation will be issued

Container crane - Diagnostics

Duration	2 days, 8:30am - 4:00pm
Availability	MCC Training Centre Killarney
Location	Training centre Online Crane site
Trainer	Experienced technical trainer from our training centre
Participants	Maintenance staff, engineers, max 8
Required equipment	Own PPE
Training targets	<ul style="list-style-type: none">- Reduction of operating errors, safety risks and crane downtime- Familiar with associated (CMS), incl. Bypass and error handling- Competent with associated software packages used- Troubleshooting and evaluation error messages- Execute practical training tasks- Targeted, systematic and timesaving troubleshooting of control systems
Training content	<ul style="list-style-type: none">- Control system architecture and network topology- Drive system diagnostics parametrisation and feedback trace- PLC control system including diagnostics of ancillary system- Handling crane management system (CMS), incl. bypass features and error diagnostics
Attestation	After successful completion a certificate of participation will be issued

Container crane - Mechanical hardware & maintenance

Duration	2 days, 8:30am - 4:00pm
Availability	MCC Training Centre Killarney
Location	Training centre Online Crane site
Trainer	Experienced technical trainer from our training centre
Participants	Maintenance staff, engineers, max 8
Required equipment	<ul style="list-style-type: none">- Own PPE- Own basic inspection tool., ie pocket torch
Training targets	<ul style="list-style-type: none">- Aware of maintenance and inspection schedules- Familiar with major mechanical systems and layout on crane- Understand crane brake and hydraulic systems- Aware of various rope systems and maintenance- Familiar with crane management system (CMS), incl. bypass feature and error handling- Competent to operate crane from all control stations- Understand how to engage and operate crane back-up drives if applicable- Aware of safety features and operation
Training content	<ul style="list-style-type: none">- Crane walkover detailing automation and operation assist system on Liebherr container crane- Maintenance and inspection schedule- Hydraulic systems- Holding & back up brake systems- Crane rope systems maintenance/ inspection- Mechanical components & crane drive train- Handling crane management system (CMS), incl. bypass features and error diagnostics
Attestation	After successful completion a certificate of participation will be issued

Container crane - IT/OT Hardware and maintenance

Duration	2 days, 8:30am - 4:00pm
Availability	MCC Training Centre Killarney
Location	Training centre Crane site
Trainer	Experienced technical trainer from our training centre
Participants	Maintenance staff, engineers, max 8
Required equipment	Own PPE
Training targets	<ul style="list-style-type: none">- Reduction of operating errors, safety risks and crane downtime- Familiar with associated (CMS), incl. bypass and error handling- Competent with associated software packages used- Troubleshooting and evaluation error messages- Targeted, systematic and timesaving troubleshooting of control systems- Execute practical training tasks
Training content	<ul style="list-style-type: none">- Network architecture and topology- System addressing
Attestation	After successful completion a certificate of participation will be issued

Container crane - Automation & operator assisted features

Duration	2 days, 8:30am - 4:00pm
Availability	MCC Training Centre Killarney
Location	Training centre Online Crane site
Trainer	Experienced technical trainer from our training centre
Participants	Maintenance staff, engineers, max 8
Required equipment	Own PPE
Training targets	<ul style="list-style-type: none"> - Understand advance operational systems on a Liebherr container crane - Familiar with maintenance and inspection schedules - Familiar with crane management system (CMS), incl. bypass features and error handling - Familiar with safety features and operation
Training content	<ul style="list-style-type: none"> - Crane walkover detailing automation and operation assist system on Liebherr container crane - Camera system - Crane collision avoidance & truck/ trailer lifter protection system - Semi-auto routing - Spreader sway damping - Position measurement system - Operator control stations
Attestation	After successful completion a certificate of participation will be issued

Container crane - Operator familiarisation/cabin

Duration	1 day, 8:30am - 4:00pm
Location	Crane site
Trainer	Experienced technical trainer from our training centre
Participants	Crane operators, max 3
Required equipment	Own PPE
Training targets	<ul style="list-style-type: none"> - Ability to operate the crane safely and correctly - Understand crane HMI display - Handling operational system error & operator help messages - Aware of safety features and operational requirements - Enable/disable operational features - Secure crane out of service - Knowledge of crane layout including structure and components
Training content	<ul style="list-style-type: none"> - Introduction to crane, summary specification - Safety elements, access/egress, and safety interlocks - Crane operator stations, local and remote if applicable - Practical crane operation - Maintenance and inspection schedule - Understand pre-start up checks
Attestation	After successful completion a certificate of participation will be issued

Container crane - Operator familiarisation/Remote operator station (ROS)

Duration	1 day, 8:30am - 4:00pm
Location	Crane control room at the container terminal
Trainer	Experienced technical trainer from our training centre
Participants	Crane operators, max 8
Required equipment	Own PPE
Training targets	<ul style="list-style-type: none"> - Overview of crane operation manual - Competent to operate crane motions from a remote-control room - Understand the ROS control station - Familiar with automated crane features - Aware of manual intervention where necessary - Handling operational system error & operator help messages - Knowledge of safety features and operational requirements
Training content	<ul style="list-style-type: none"> - Introduction to crane, summary specification - Workstation adjustment and system login - Overview of ROS control console - Operators HMI and error handling - Overview of onboard collision avoidance systems - Multi-crane supervision - Starting and observing automated crane movement - Practical crane supervision via camera system - Coordinating pre-start up checks before crane operation
Attestation	After successful completion a certificate of participation will be issued

Container crane - Operator familiarisation/Remote control bellybox

Duration	1 day, 8:30am - 4:00pm
Location	Crane site
Trainer	Experienced technical trainer from our training centre
Participants	Crane operators and/or maintenance staff, max 8
Required equipment	Own PPE
Training targets	<ul style="list-style-type: none"> - Overview of crane operation manual - Competent to operate crane motions from a remote-control device (bellybox) - Understand the Bellybox controls - Knowledge of operational requirements
Training content	<ul style="list-style-type: none"> - Introduction to crane, summary specification - System start and crane control - Overview of onboard collision avoidance systems - Coordinating pre-start up checks before operation and parking - Practical demonstrations
Attestation	After successful completion a certificate of participation will be issued, which includes approval as 'train the trainer' for other operatives

Container crane - Emergency egress

Duration	1 day, 8:30am - 4:00pm
Location	Crane site
Trainer	Experienced trainer from our partner
Participants	Crane operator and/or maintenance staff, max 6
Required equipment	Own PPE
Training targets	<ul style="list-style-type: none">- Introduction and correct use of PPE- Limitations and use of the equipment
Training content	<ul style="list-style-type: none">- Handling of storage, and inspection incl. pre/post inspection (ABS3W controlled descent device with 2 rescue triangle harness)- Full egress demonstration, self-evacuation, e.g. crane operator- Preparation of crane specific risk assessment and method statement
Attestation	After successful completion a certificate of participation will be issued (valid for 24 months).

Container crane - Emergency rescue

Duration	2 days, 8:30am - 4:00pm
Location	Crane site
Trainer	Experienced technical trainer from our partner
Participants	Crane operators and/or maintenance staff, max 6
Required equipment	Own PPE
Training targets	<ul style="list-style-type: none">- Introduction and correct use of PPE- Limitations and use of the equipment
Training content	<ul style="list-style-type: none">- Handling of storage, and inspection incl. pre/post inspection (ABS3W controlled descent device with ABTECH stretcher and recovery pole).- Full rescue and egress demonstration, with stretcher- Full rescue and egress demonstration, with fallen harness- Calling and working with local emergency services- Preparation of crane specific risk assessment and method statement
Attestation	After successful completion a certificate of participation will be issued (valid for 24 months).

Worldwide at your service



Parts

Liebherr's Original Parts – Ensuring performance and durability with expert engineering support. Quick, reliable access to keep your operations running smoothly and efficiently.



Upgrades

Unlock your crane's full potential with Liebherr Transform, using the latest technologies to make your equipment stronger, faster, smarter, greener and ultimately ... better.



Service

Our skilled technicians deliver fast, efficient, and dependable service from routine maintenance to emergency support, to keep your cranes running at peak performance.



CarePacks

Ensure the reliability and longevity of your container cranes with Liebherr-CarePacks. Choose from three support levels, from support only to maintenance and service repairs.



Training

Delivered by experienced professionals at our training facility or on-site, our programs ensure machine operators and maintenance teams are equipped with the knowledge and skills needed for safe and efficient crane operation.



Reman programme

Extend the life of your equipment with Liebherr Repair & Reman. Our team restores components to like-new condition, ensuring reliability, performance, and cost savings without compromising quality.

A well-organised worldwide network of highly qualified, experienced engineers and technical advisers is available for our customers, in order to ensure shortest response times and highest productivity.

service.lcc@liebherr.com · www.liebherr.com/en-ie/maritime-cranes/customer-service/contact-5336664

Find your local service partner.

